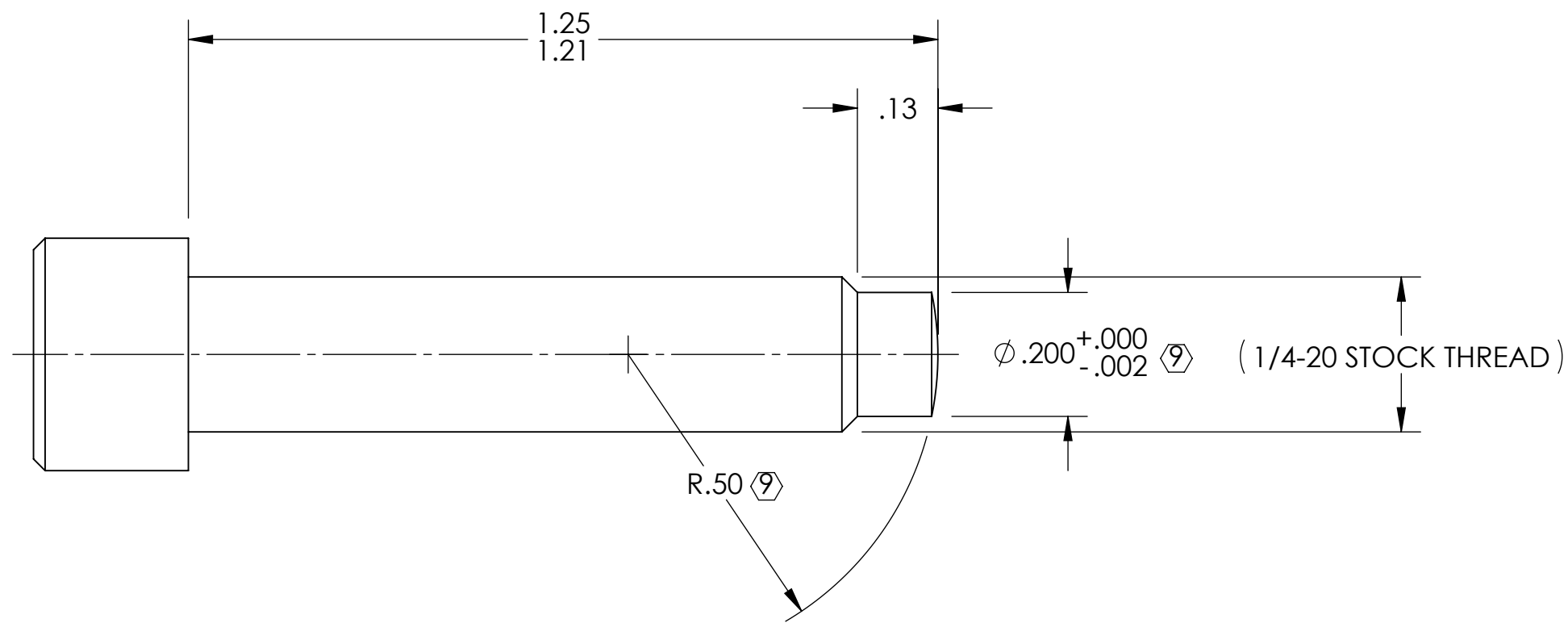
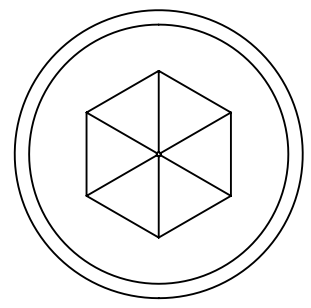
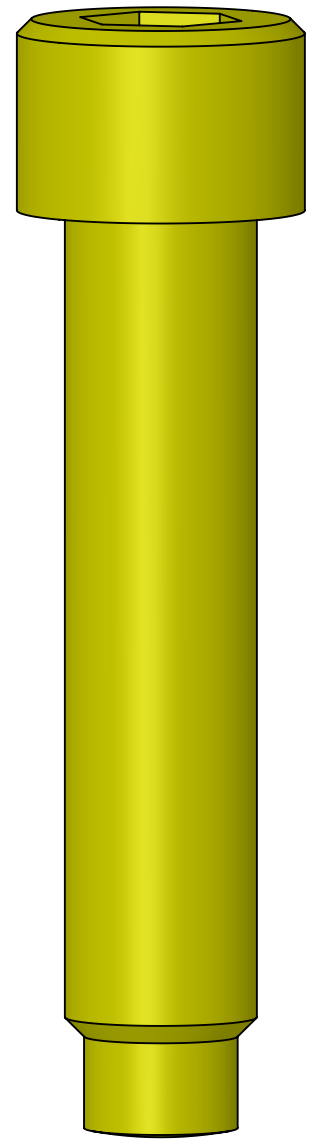


8 7 6 5 4 3 2 1

- NOTES CONTINUED:**
- 5. BAG AND TAG LOT WITH DRAWING NUMBER, REVISION, QUANTITY, AND LOT SERIAL NUMBER. LOT SERIAL NUMBERS START AT 001 AND PROCEED CONSECUTIVELY. EXAMPLE (TAG): DXXXXXX-VY, QTY: X, LOT S/N 001.
  - 6. MASS: 0.023 LB [10.5 G].
  - 7. ALL PARTS SHALL BE MANUFACTURED IN ACCORDANCE WITH LIGO SPECIFICATION E0900364.
  - 8. MAKE FROM: McMASTER-CARR P/N 92200A544 OR EQUIVALENT PER MS16995. (SOCKET HEAD CAP SCREW, 1/4-20 UNC-3A FULLY THREADED, 300 SERIES STAINLESS STEEL)
  - 9. 63 μINCH Ra FINISH APPLIES ONLY TO MACHINED SURFACES. STOCK THREAD AND PART SURFACES TO BE UN-MARRED.

REV.	DATE	DCN #	DRAWING TREE #
v1	11 APR 2012	E1101214	-
-	-	-	-
-	-	-	-



D1200404 cLIGO TMS Lower Stage Spring Adjuster Screw, PART PDM REV: X-004, DRAWING PDM REV: X-004

D C B A

D C B A

<b>NOTES AND TOLERANCES: (UNLESS OTHERWISE SPECIFIED)</b>				<b>LIGO</b> CALIFORNIA INSTITUTE OF TECHNOLOGY MASSACHUSETTS INSTITUTE OF TECHNOLOGY		<b>PART NAME</b> cLIGO TMS LOWER STAGE SPRING ADJUSTER SCREW	
DIMENSIONS ARE IN INCHES		1. INTERPRET DRAWING PER ASME Y14.5-1994. 2. REMOVE ALL SHARP EDGES, .005-.015. 3. DO NOT SCALE FROM DRAWING. 4. ALL MACHINING FLUIDS MUST BE FULLY SYNTHETIC, FULLY WATER SOLUBLE AND FREE OF SULFUR, SILICONE, AND CHLORINE.		<b>SYSTEM</b> ADVANCED LIGO		<b>SUB-SYSTEM</b> AOS	
TOLERANCES: .XX ± .01 .XXX ± .005		MATERIAL 8		FINISH 63 μinch Ra 9		NEXT ASSY D1200525	
ANGULAR ± 1.0°						DESIGNER C. CONLEY 03 MAR 2012	
						DRFTER C. CONLEY 20 MAR 2012	
						CHECKER SEE DCN	
						APPROVAL SEE DCN	
						SIZE DWG. NO. B D1200404	
						REV. v1	
						SCALE: NONE PROJECTION:  SHEET 1 OF 1	

8 7 6 5 4 3 2 1