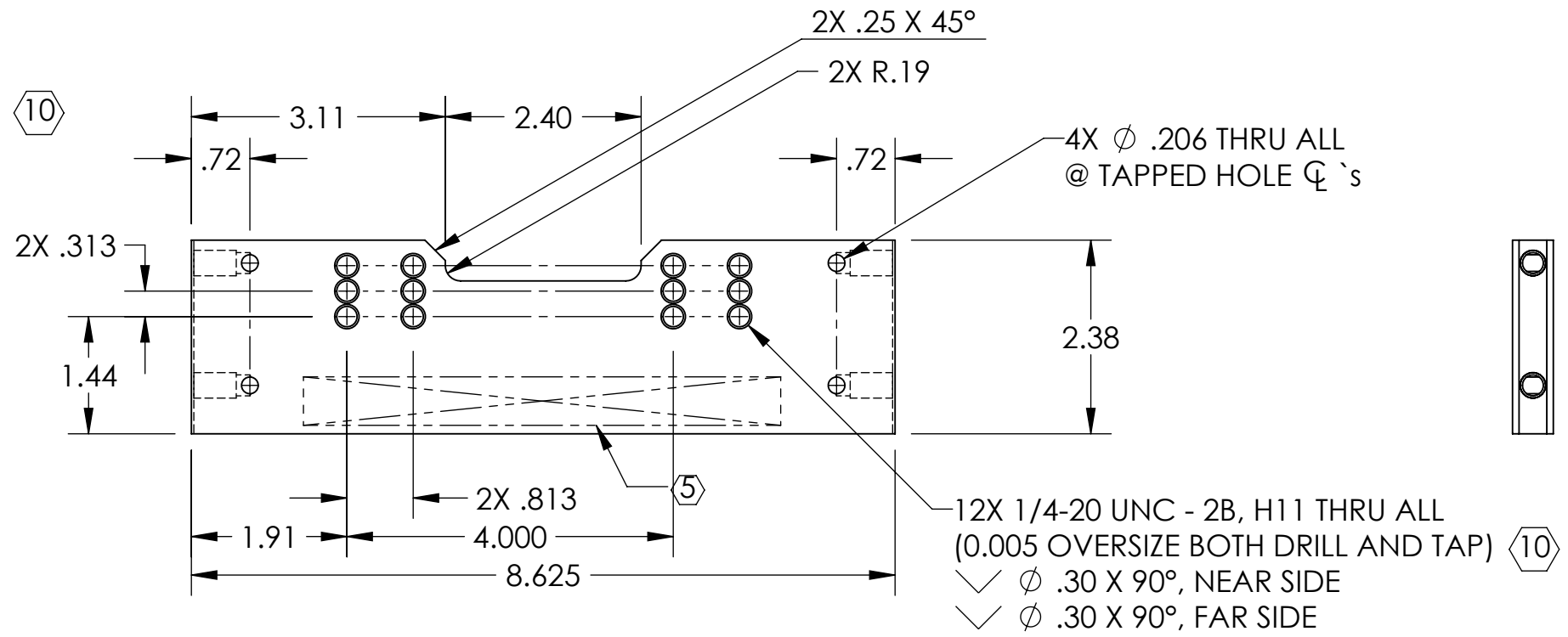
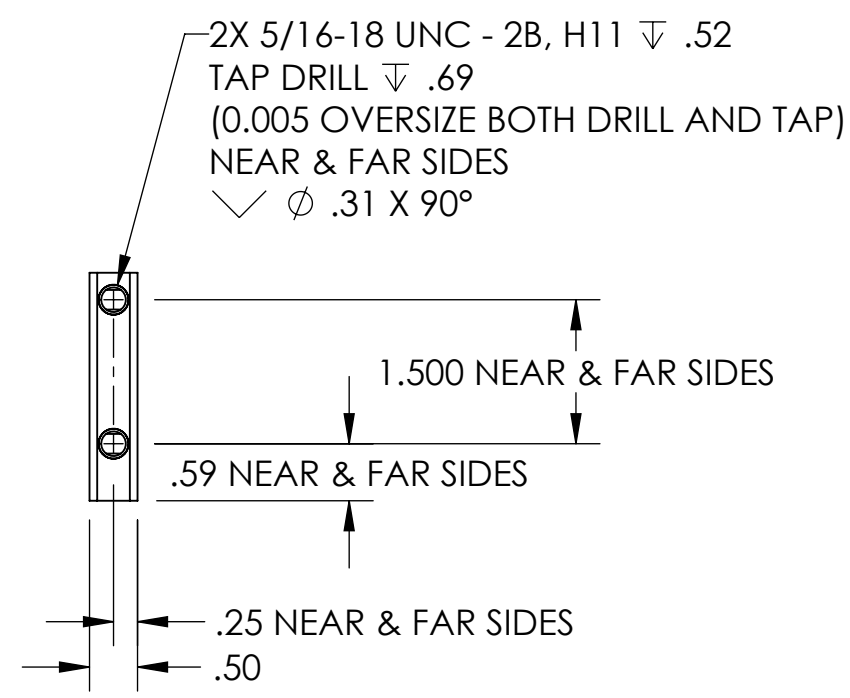
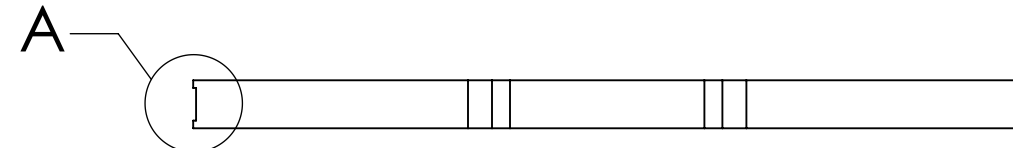
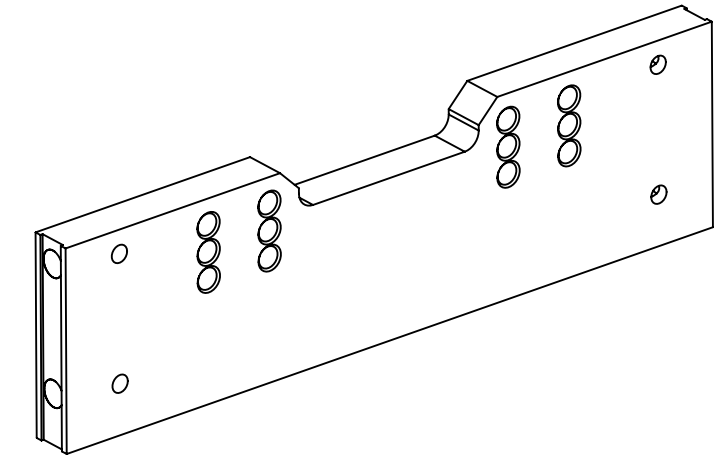
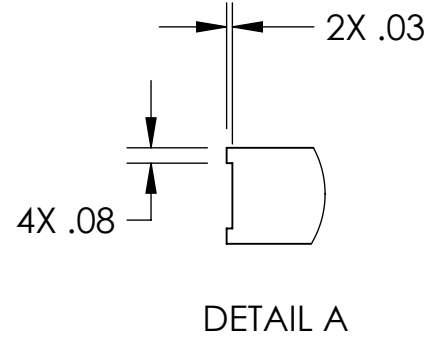


NOTES CONTINUED:

- ⑤ SCRIBE, ENGRAVE (A VIBRATORY TOOL MAY BE USED), LASER MARK OR MECHANICALLY STAMP (NO INKS OR DYES) DRAWING PART NUMBER, REVISION (AND VARIANT OR "TYPE" IF APPLICABLE) ON NOTED SURFACE OF PART FOLLOWED ON THE NEXT LINE WITH A THREE DIGIT SERIAL NUMBER. SERIAL NUMBERS START AT 001 FOR THE FIRST ARTICLE AND PROCEED CONSECUTIVELY. USE MINIMUM 0.12" HIGH CHARACTERS, UNLESS THE SIZE OF THE PART DICTATES SMALLER CHARACTERS. EXAMPLE: DXXXXXX-VY, TYPE-XX, S/N XXX
- 6. MASS: 0.399 KG [0.880 LB].
- 7. MACHINE ALL SURFACES TO REMOVE OXIDES AND MILL FINISH. USE OF ABRASIVE REMOVAL TECHNIQUES IS NOT ALLOWED.
- 8. ALL PARTS SHALL BE MANUFACTURED IN ACCORDANCE WITH LIGO SPECIFICATION E0900364.
- 9. NO REPAIRS SHALL BE MADE UNLESS APPROVED IN ADVANCE, AND IN WRITING, BY LIGO LABORATORY. IN GENERAL WELD REPAIRS AND PRESS FIT INSERT REPAIRS ARE NEVER ACCEPTABLE; THE PART SHOULD BE MADE WITH VIRGIN MATERIAL. SPECIAL CIRCUMSTANCES CAN BE REVIEWED IF / WHEN BROUGHT TO THE ATTENTION OF LIGO CONTRACTING OFFICER'S REPRESENTATIVE (COTR) THROUGH A MATERIAL REVIEW BOARD (MRB) PROCESS. REFER TO LIGO-E0900364.
- ⑩ ALL TAPPED HOLES: 0.005" OVERSIZE BOTH DRILL AND TAP.

REV.	DATE	DCN #	DRAWING TREE #
v1	10 APR 2012	E1200317	-
-	-	-	-
-	-	-	-



D1200310 aLIGO TMS Optics Table Spreader Bridge, PART PDM REV: X-004, DRAWING PDM REV: X-005

NOTES AND TOLERANCES: (UNLESS OTHERWISE SPECIFIED)				LIGO CALIFORNIA INSTITUTE OF TECHNOLOGY MASSACHUSETTS INSTITUTE OF TECHNOLOGY		PART NAME					
DIMENSIONS ARE IN INCHES				ADVANCED LIGO		aLIGO TMS OPTICS TABLE SPREADER BRIDGE					
TOLERANCES: .XX ± .01 .XXX ± .005				SUB-SYSTEM AOS		DESIGNER	K. MAILAND	20 FEB 2012	SIZE DWG. NO.	D1200310	REV.
ANGULAR ± 1.0°				NEXT ASSY D1102291		DRAFTER	C. CONLEY	10 APR 2012	B		v1
MATERIAL 6061-T6 Al				FINISH 63 μinch Ra		CHECKER	SEE DCN		SCALE: NONE		PROJECTION:
						APPROVAL	SEE DCN		SHEET 1 OF 1		