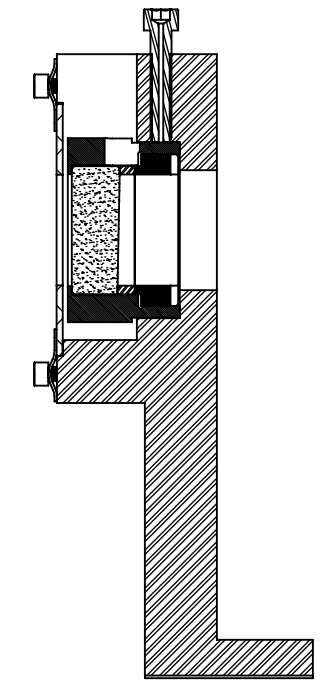
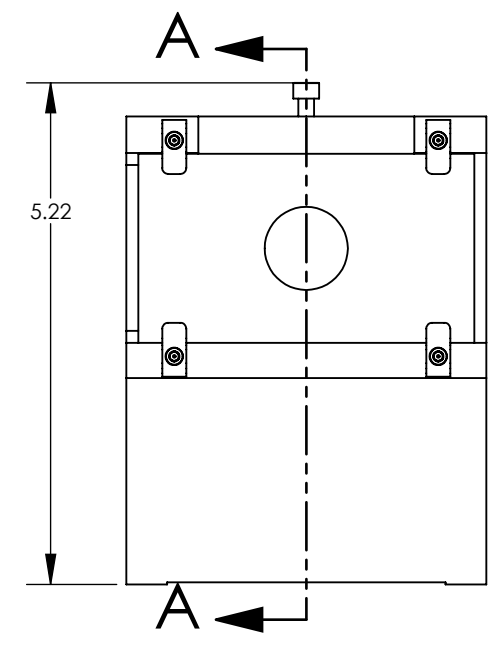
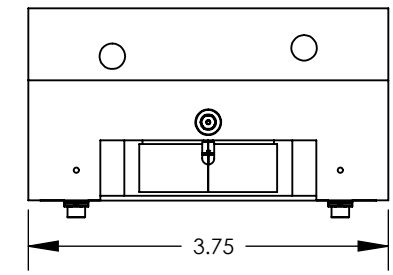
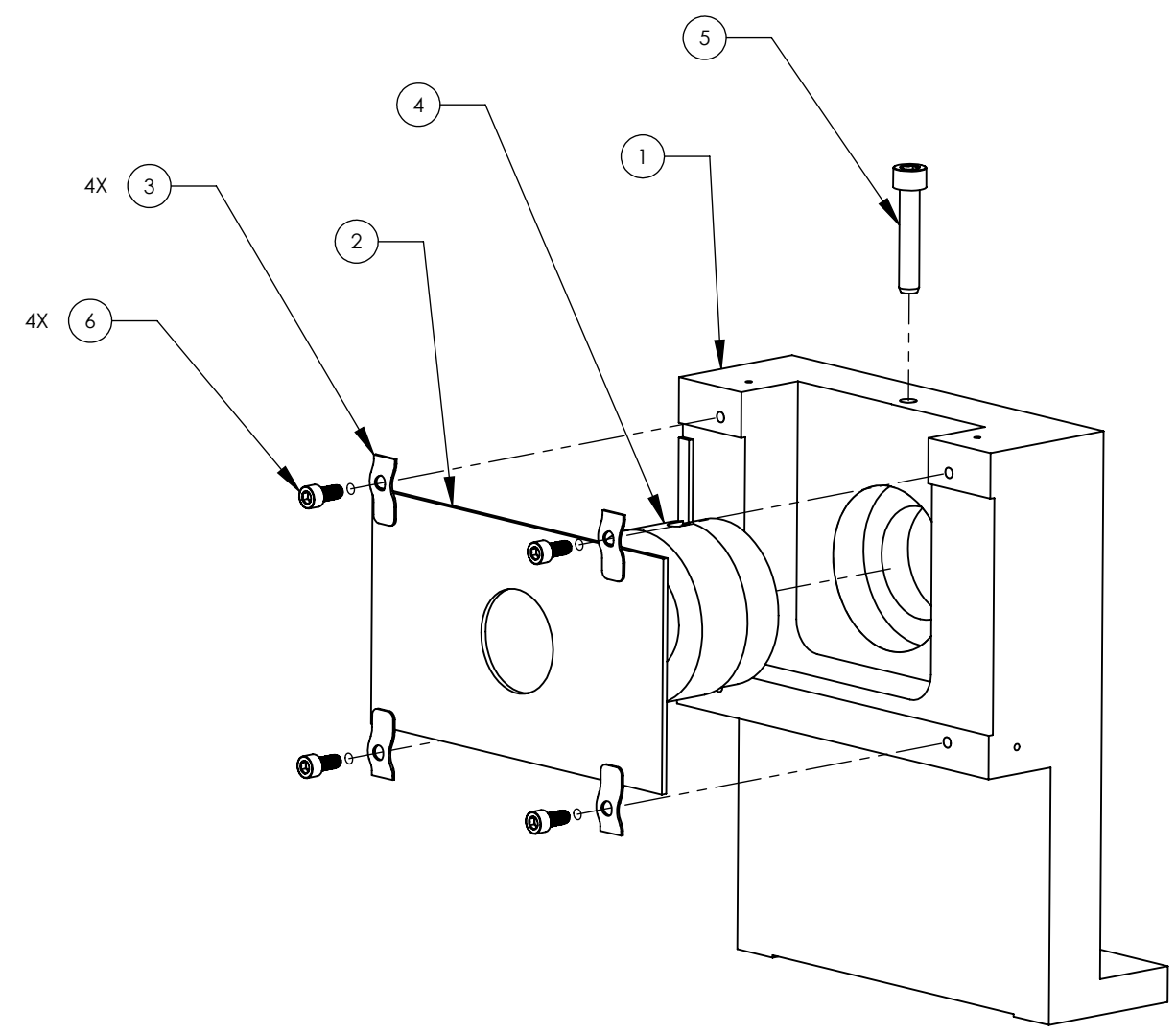


NOTES CONTINUED:  
 5. APPROXIMATE WEIGHT = 1.67 LB.  
 6. TORQUE SHCS TO VALUES SPECIFIED IN LIGO-T1 100066.

REV.	DATE	DCN #	DRAWING TREE #
v1	18 APR 2012	E1000563	-
v3	12 SEP 2012	-	-
v4	2 NOV 2012	-	-



SECTION A-A  
 SCALE 1 : 1.5

ITEM NO.	PART NUMBER	DESCRIPTION	MATERIAL	REQ
6	92200A106	Head Cap Screw 300 Series SS, 4-40 Thrd, 1/4" Length, MS 16995-9	18-8 SSTL	4
5	C-814	SHCS, Vented, 8-32 X .875 LG.	18-8 SSTL	1
4	D0900359	WEDGED PRISM ASSY	N/A	1
3	D1001919	BEAM DUMP MOUNTING CLAMP	304 SSTL	4
2	D1001920	INPUT BAFFLE BEAM DUMP	18 GA A424 TYPE I STEEL	1
1	D1200198	WEDGED PRISM HOLDER STAND	6061-T6 Al	1

PARTS LIST

NOTES AND TOLERANCES: (UNLESS OTHERWISE SPECIFIED)  
 DIMENSIONS ARE IN INCHES  
 TOLERANCES:  
 .XX ± .03  
 .XXX ± .010  
 ANGULAR ± .5°  
 MATERIAL N/A  
 FINISH N/A μinch

**LIGO** CALIFORNIA INSTITUTE OF TECHNOLOGY  
 MASSACHUSETTS INSTITUTE OF TECHNOLOGY

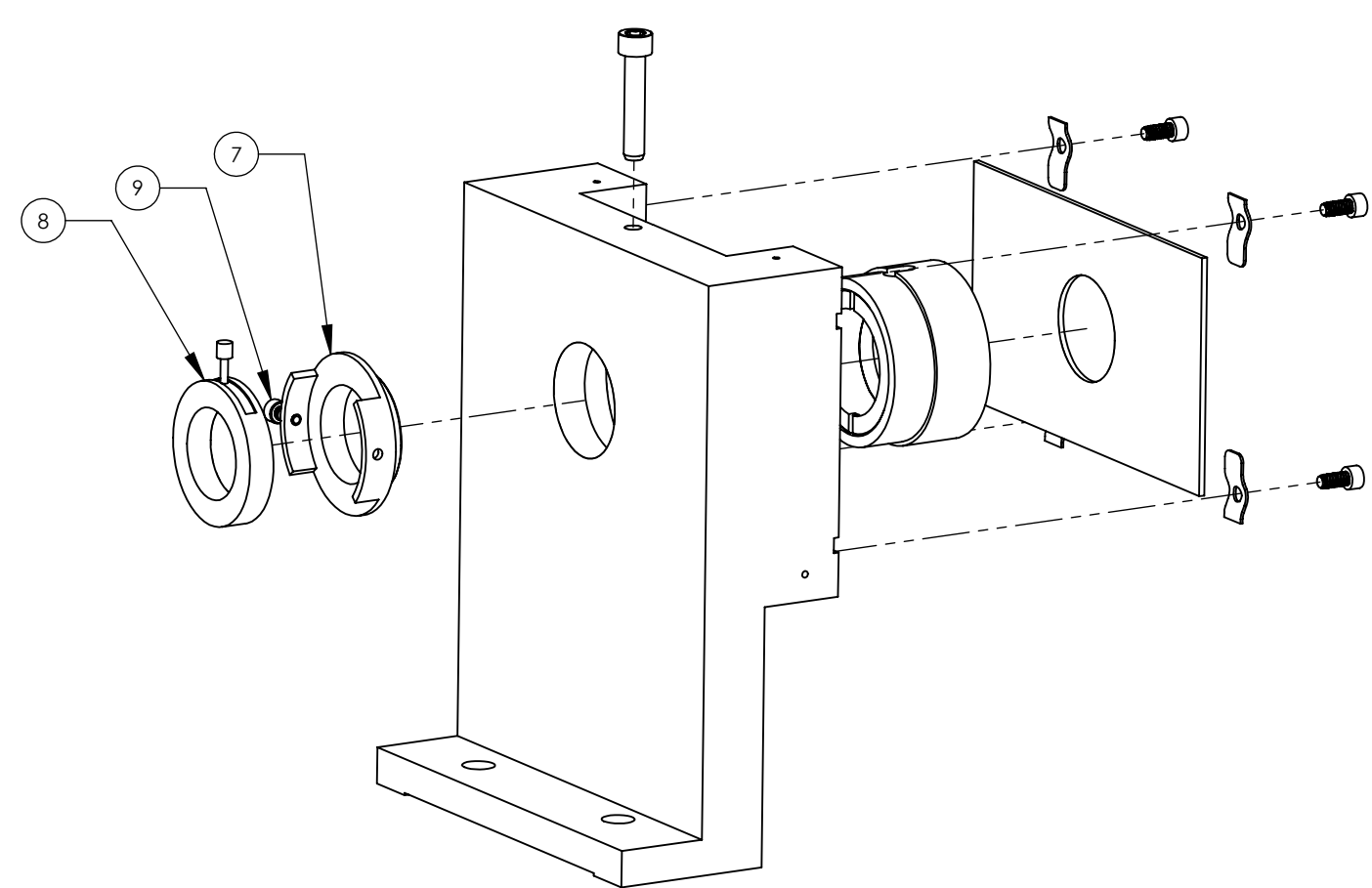
SYSTEM: ADVANCED LIGO SUB-SYSTEM: AOS  
 NEXT ASSY: D0900623

PART NAME: WEDGED PRISM HOLDER ASSY

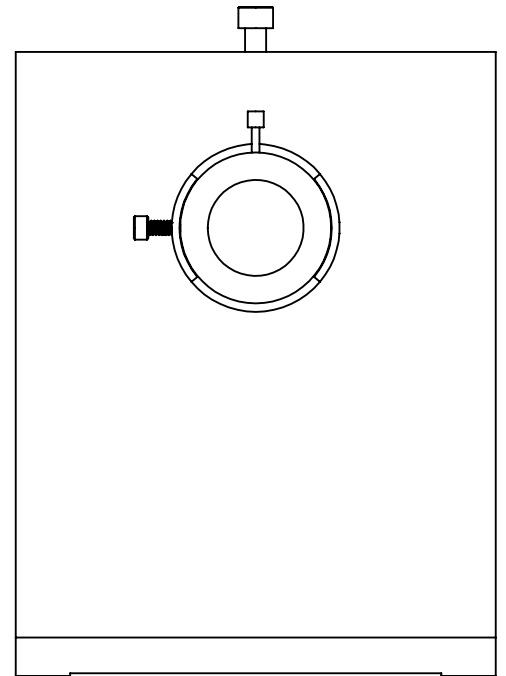
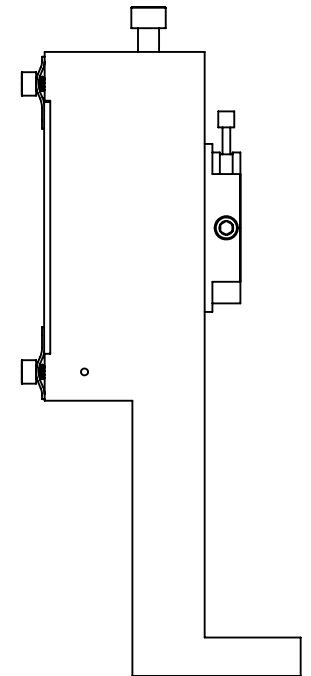
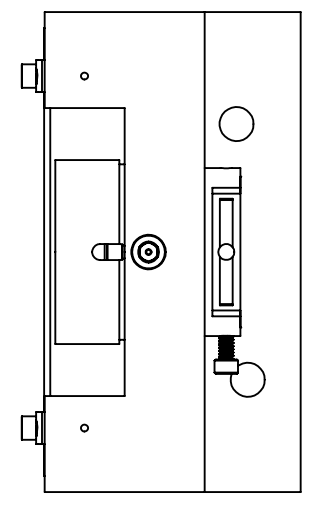
DESIGNER	M. RUIZ	2 FEB 2012	SIZE	DWG. NO.	REV.
DRAFTER	MRUIZ	18 APR 2012	<b>B</b>	<b>D1200197</b>	<b>v4</b>
CHECKER	L. AUSTIN		SCALE: 1:1	PROJECTION:	SHEET 1 OF 2
APPROVAL	M. SMITH				

D1200197 aLIGO\_AOS\_Wedged Prism Holder Assy, PART PDM REV: X-029, DRAWING PDM REV: X-018

D1200197 aLIGO\_AOS\_Wedged Prism Holder Assy, PART PDM REV: X-029, DRAWING PDM REV: X-018



### ALIGNMENT TOOLING



ITEM NO.	PART NUMBER	DESCRIPTION	MATERIAL	QTY	TOTAL
9	C-404-NA	#4-40 X 0.250", 18-8 SSSL, SILVER PLATED	Ag-PLATED 300 SSSL	1	0
8	D20S	DIAPHRAGM D20S OFI	Material <not specified>	1	0
7	D1100556	IRIS DIAPHRAGM MOUNT	304, 316 OR 302 SSSL	1	0
PARTS LIST					

**CALIFORNIA INSTITUTE OF TECHNOLOGY**  
**MASSACHUSETTS INSTITUTE OF TECHNOLOGY**

SIZE	DWG. NO.	REV.
<b>B</b>	D1200197	<b>v4</b>
SCALE: 2:1	PROJECTION:	SHEET 2 OF 2