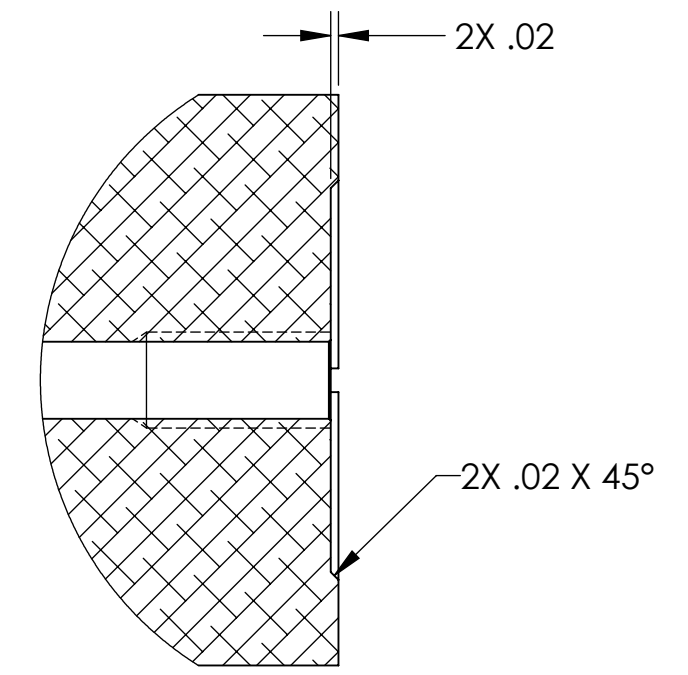
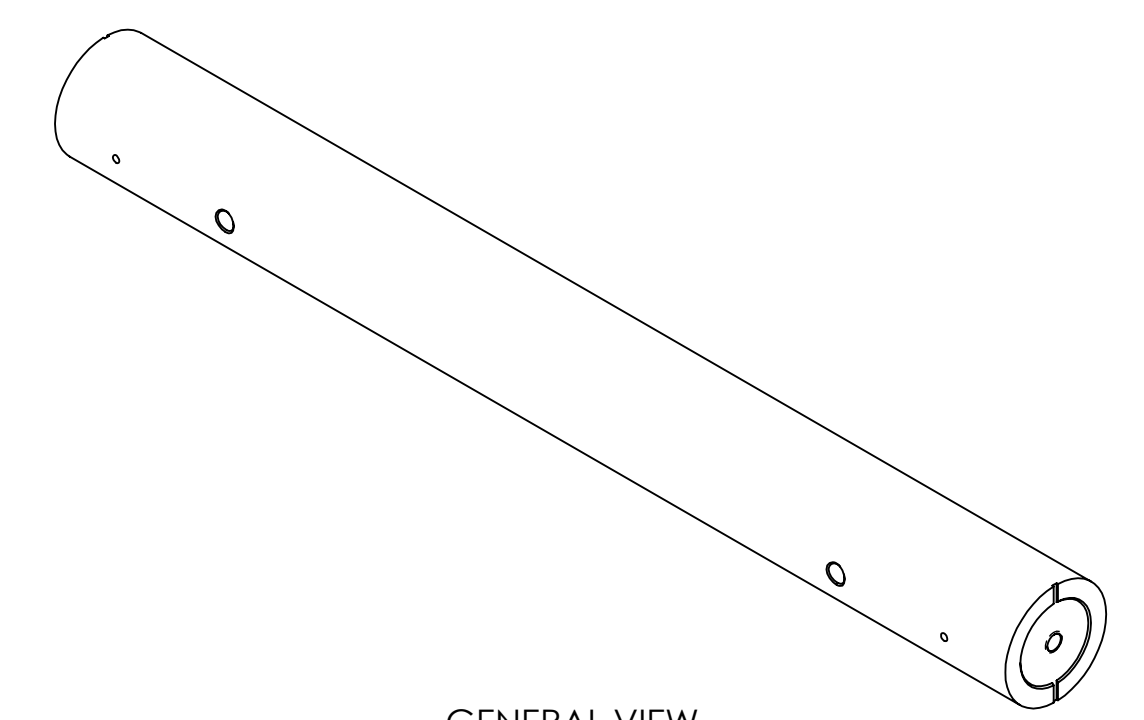


- NOTES CONTINUED:**
- 5. SCRIBE, ENGRAVE (A VIBRATORY TOOL MAY BE USED), LASER MARK OR MECHANICALLY STAMP (NO INKS OR DYES) DRAWING PART NUMBER, REVISION (AND VARIANT OR "TYPE" IF APPLICABLE) ON NOTED SURFACE OF PART FOLLOWED ON THE NEXT LINE WITH A THREE DIGIT SERIAL NUMBER. SERIAL NUMBERS START AT 001 FOR THE FIRST ARTICLE AND PROCEED CONSECUTIVELY. USE MINIMUM 0.12" HIGH CHARACTERS, UNLESS THE SIZE OF THE PART DICTATES SMALLER CHARACTERS. EXAMPLE: DXXXXXX-VY, TYPE-XX, S/N XXX
 - 6. APPROXIMATE WEIGHT = 6.942 LB.
 - 7. MACHINE ALL SURFACES TO REMOVE OXIDES AND MILL FINISH. USE OF ABRASIVE REMOVAL TECHNIQUES IS NOT ALLOWED. REFER TO LIGO-E0900364
 - 8. ALL PARTS SHALL BE MANUFACTURED IN ACCORDANCE WITH LIGO SPECIFICATION E0900364.
 - 9. ALL MATERIAL IS TO BE VIRGIN MATERIAL (I.E. NO WELD REPAIRS, PLUGS OR RECYCLED MATERIAL). NO REPAIRS SHALL BE MADE UNLESS APPROVED IN ADVANCE, AND IN WRITING, BY LIGO LABORATORY. REFER TO LIGO-E0900364.

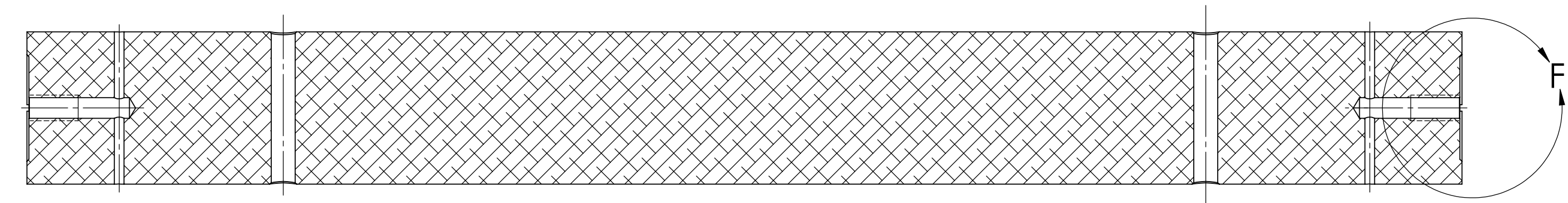
REV.	DATE	DCN #	DRAWING TREE #
v1	30 JAN 2012	E1101197	-
-	-	-	-
-	-	-	-



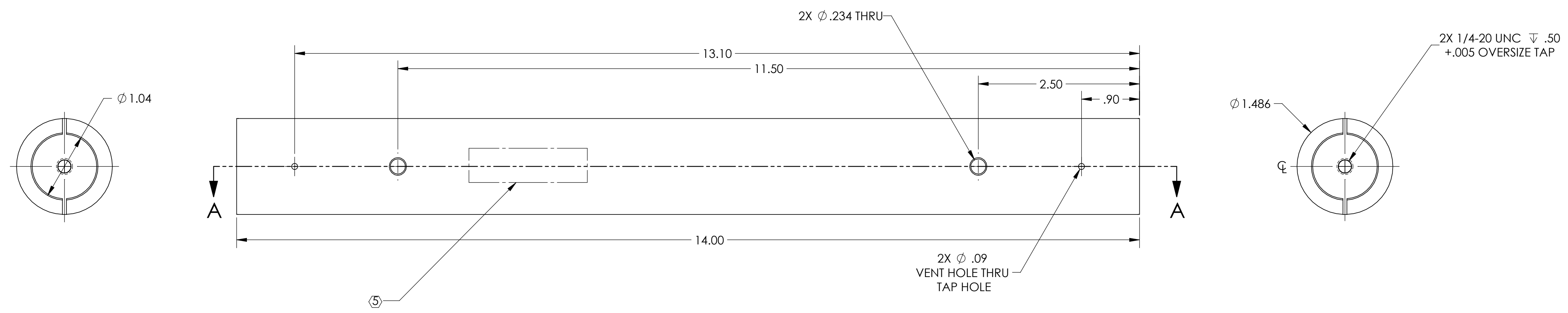
DETAIL F
SCALE 2 : 1



GENERAL VIEW
FOR REFERENCE ONLY
NO SCALE



SECTION A-A



NOTES AND TOLERANCES: (UNLESS OTHERWISE SPECIFIED)		LIGO CALIFORNIA INSTITUTE OF TECHNOLOGY MASSACHUSETTS INSTITUTE OF TECHNOLOGY		PART NAME	
DIMENSIONS ARE IN INCHES TOLERANCES: .XX ± .01 .XXX ± .005 ANGULAR ± 1.0°		1. INTERPRET DRAWING PER ASME Y14.5-1994. 2. REMOVE ALL SHARP EDGES, .005-.015, FOR MACHINED PARTS. ROUND ALL EDGES APPROXIMATELY R.02 FOR SHEET METAL PARTS. 3. DO NOT SCALE FROM DRAWING. 4. ALL MACHINING FLUIDS MUST BE FULLY SYNTHETIC, FULLY WATER SOLUBLE AND FREE OF SULFUR, SILICONE, AND CHLORINE.		MOUNTING POST 1.5 DIA	
MATERIAL	FINISH	SYSTEM	SUB-SYSTEM	DESIGNER	DATE
304 SSSL	63 μinch	ADVANCED LIGO	AOS	TQ. NGUYEN	30 JAN 2012
		NEXT ASSY		DRAFTER	DATE
		D1102016		TQ. NGUYEN	30 JAN 2012
				CHECKER	
				L. AUSTIN	
				APPROVAL	
				M. SMITH	
				SIZE	DWG. NO.
				D	D1200165
				REVISION	
				v1	
				SCALE: 1:1	PROJECTION:
					SHEET 1 OF 1

D:\2001\65_01\GIGO\HAWK\ELAT\BEAM\DJMPF\MOUNTING POST 1.5 DIA - PART.FDM REV: X-001.DRAWING.FDM REV: X-003