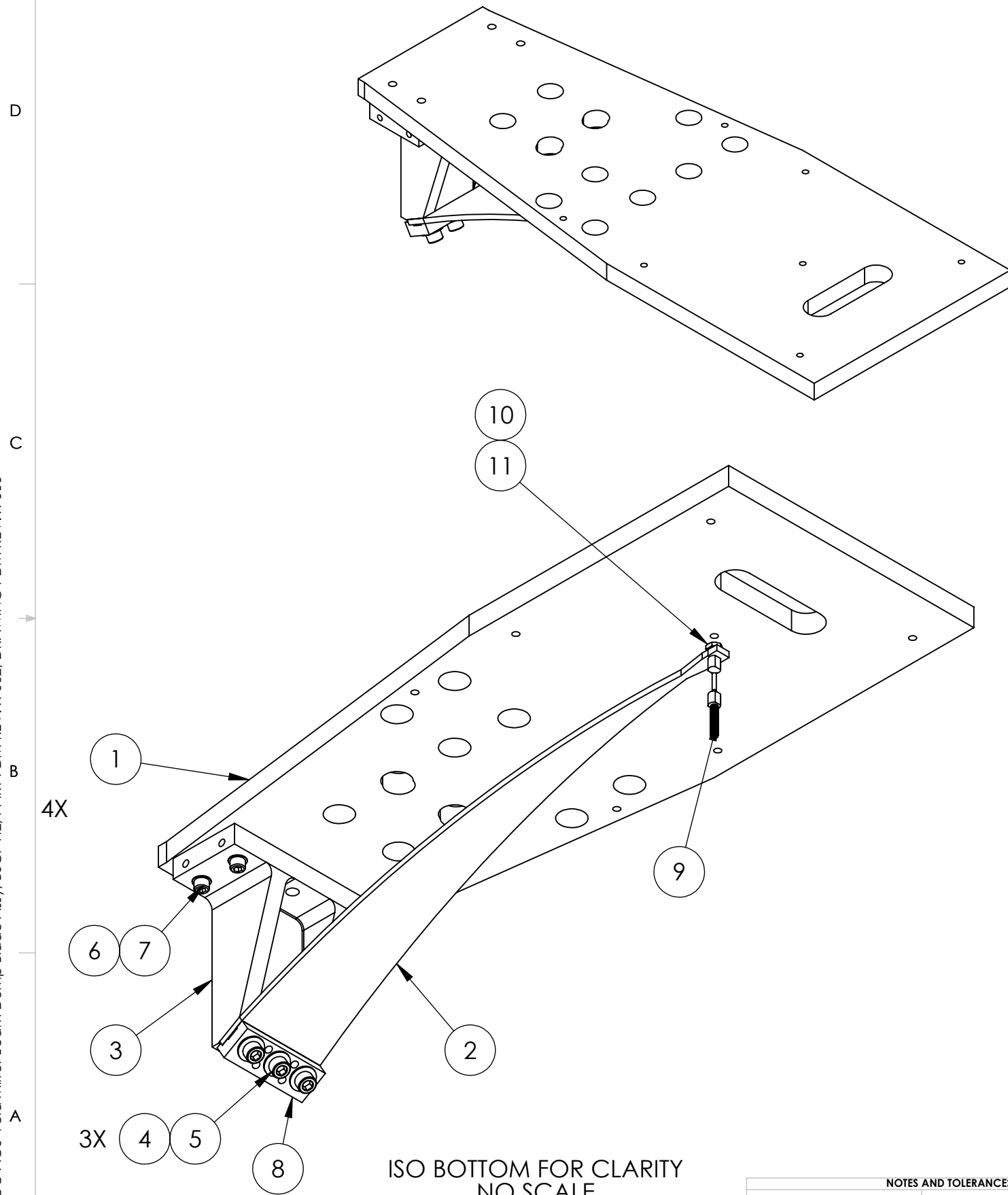


D1200147 αLIGO AOS Fold Mirror Beam Dump Blade Assy, BSC7 H2, PART PDM REV: X-002, DRAWING PDM REV: X-000

NOTES CONTINUED:
5. APPROXIMATE WEIGHT = 17.610 LBS.

REV.	DATE	DCN #	DRAWING TREE #
v1	08 NOV 2011	E1200051	-
-	-	-	-
-	-	-	-



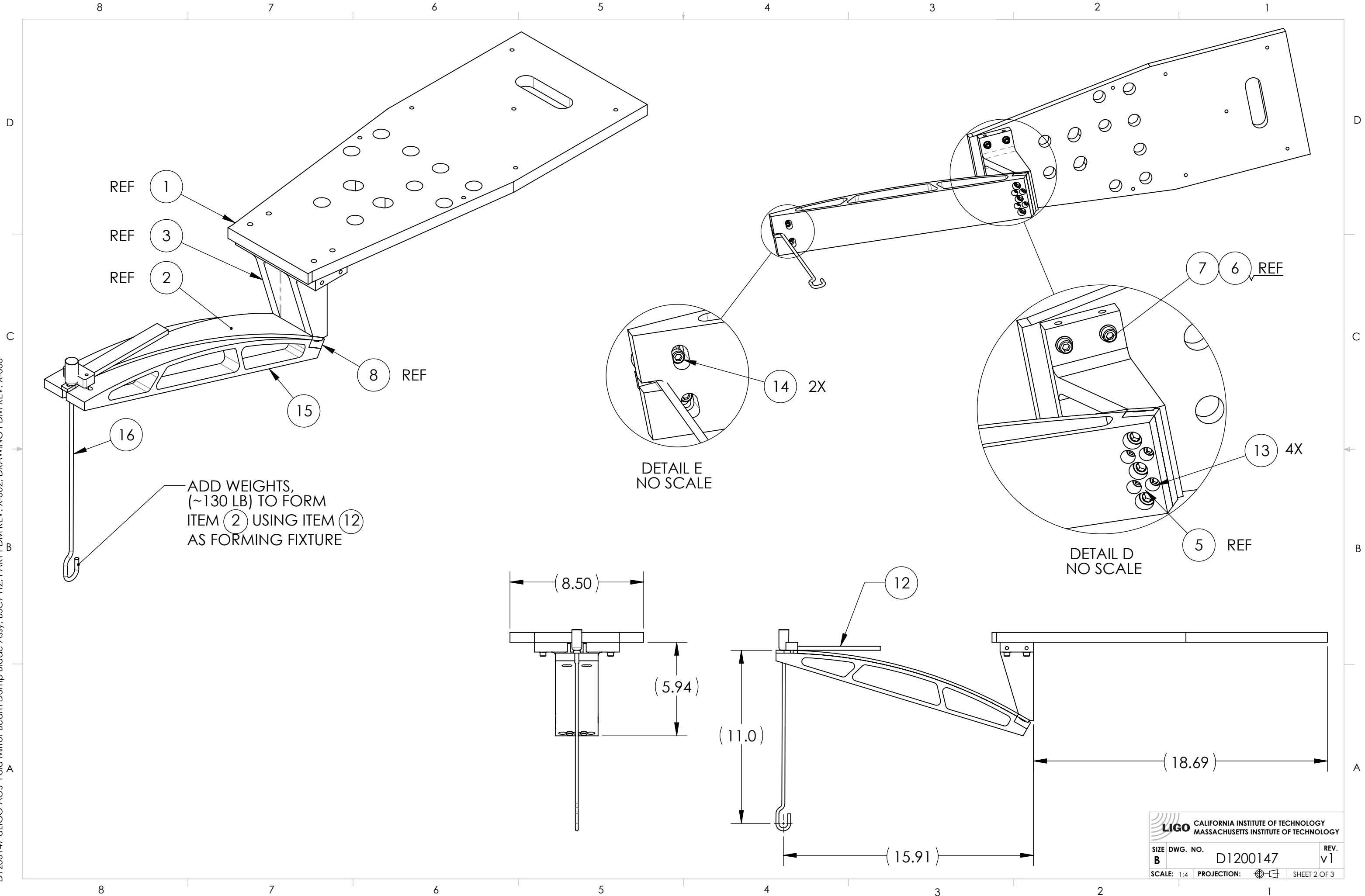
ITEM NO.	NUMBER	DESCRIPTION	QTY	BLADE FORM/QTY.
16	D1101298	BLADE SPRING BENDING HOOK ASSY	-	1
15	D1101099	αLIGO ACB BEND FIXTURE	-	1
14	92200A246	SOCKET HEAD CAP SCREW, 10-24 X .875 LG, NAS 1352C-3-14 (OR EQUIV)	-	2
13	92200A240	SOCKET HEAD CAP SCREW, 10-24 X .375 LG, NAS 1352C-3-6 (OR EQUIV)	-	4
12	D1101184	αLIGO ACB BEND FIXTURE PLATE	1	1
11	N-1024-A	UC-COMP, HEX NUT, #10-24, SSTL	1	-
10	90945A741	WASHER, FLAT, #10 (NAS 620-C10 OR EQUIVALENT)	1	-
9	D1002340	SLC ACB SUSPENSION ROD	1	-
8	D1002844	SLC ACB BLADE CLAMP	1	1
7	C-2016-NA	SOCKET HEAD CAP SCREW, .25-20 X 1 LG	4	4
6	NAS 620-C416L	1/4 FLAT WASHER, .260 ID x .47 OD X .02 THK	4	4
5	C-1820-NA	U-C COMP. 5/16-18 X 1.25L, S.H.C.S.	3	3
4	98019A385	.312 FLAT WASHER, .34 ID X .69 OD X .06 T, NASM 15795-812	3	3
3	D1002609	SLC BLADE MOUNTING BRACKET	1	1
2	D1000705	FM Beam Dump Blade	1	1
1	D1200146	αLIGO AOS FM BD BAFFLE INTERFACE MOUNTING PLATE, BSC7 H2	1	1

NOTES AND TOLERANCES: (UNLESS OTHERWISE SPECIFIED)
 DIMENSIONS ARE IN INCHES
 TOLERANCES:
 .XX ± .02
 .XXX ± .005
 ANGULAR ± 1.0°
 1. INTERPRET DRAWING PER ASME Y14.5-1994.
 2. REMOVE ALL SHARP EDGES, .005-.015, FOR MACHINED PARTS. ROUND ALL EDGES APPROXIMATELY R.02 FOR SHEET METAL PARTS.
 3. DO NOT SCALE FROM DRAWING.
 4. ALL MACHINING FLUIDS MUST BE FULLY SYNTHETIC, FULLY WATER SOLUBLE AND FREE OF SULFUR, SILICONE, AND CHLORINE.

CALIFORNIA INSTITUTE OF TECHNOLOGY MASSACHUSETTS INSTITUTE OF TECHNOLOGY		PART NAME αLIGO AOS FOLD MIRROR BEAM DUMP BLADE ASSY, BSC7 H2	
SYSTEM ADVANCED LIGO	SUB-SYSTEM AOS	DESIGNER DRAFTER CHECKER APPROVAL	M. SMITH J. TERRAZAS 08 NOV 2011
MATERIAL N/A		FINISH N/A μinch	NEXT ASSY D1101897
SCALE: 1:4		PROJECTION:	SHEET 1 OF 3

SIZE DWG. NO. **D1200147** REV. v1

D1200147 AOS Fold Mirror Beam Dump Blade Assy, BSC7 H2, PART PDM REV: X-002, DRAWING PDM REV: X-000



REF (1)
REF (3)
REF (2)

(8) REF

(15)

(16)

ADD WEIGHTS,
(~130 LB) TO FORM
ITEM (2) USING ITEM (12)
AS FORMING FIXTURE

DETAIL E
NO SCALE

(14) 2X

DETAIL D
NO SCALE

(7) (6) REF

(13) 4X

(5) REF

(12)

(8.50)

(5.94)

(11.0)

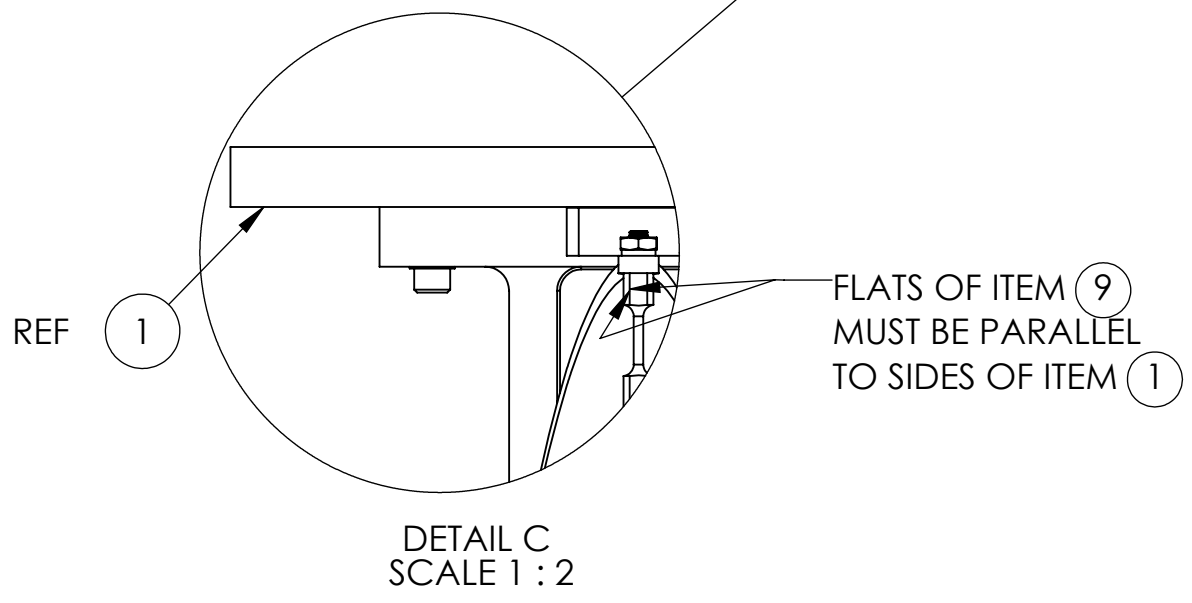
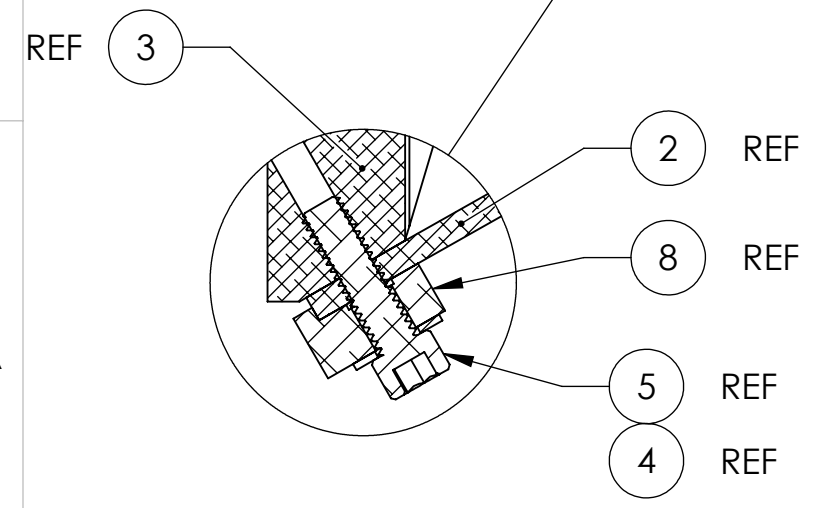
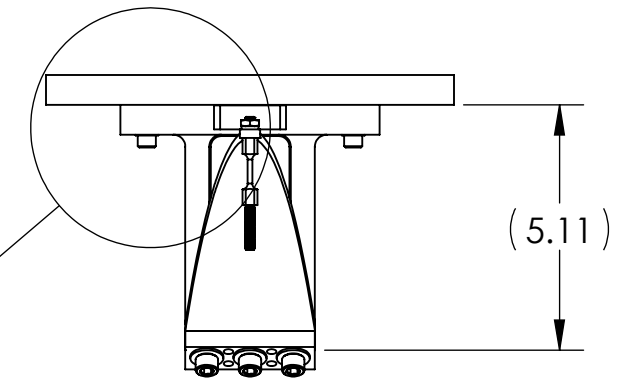
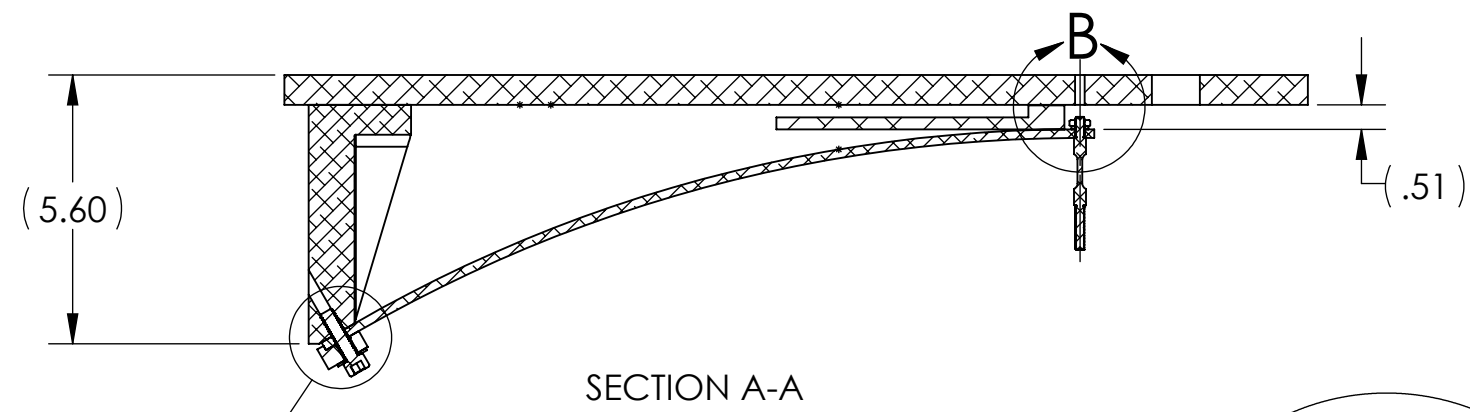
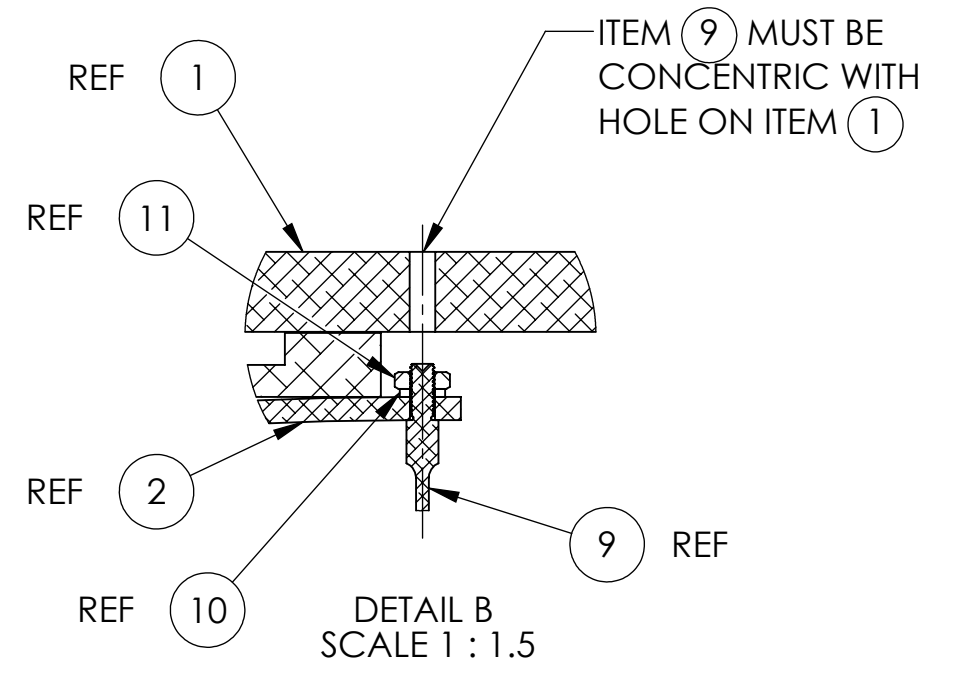
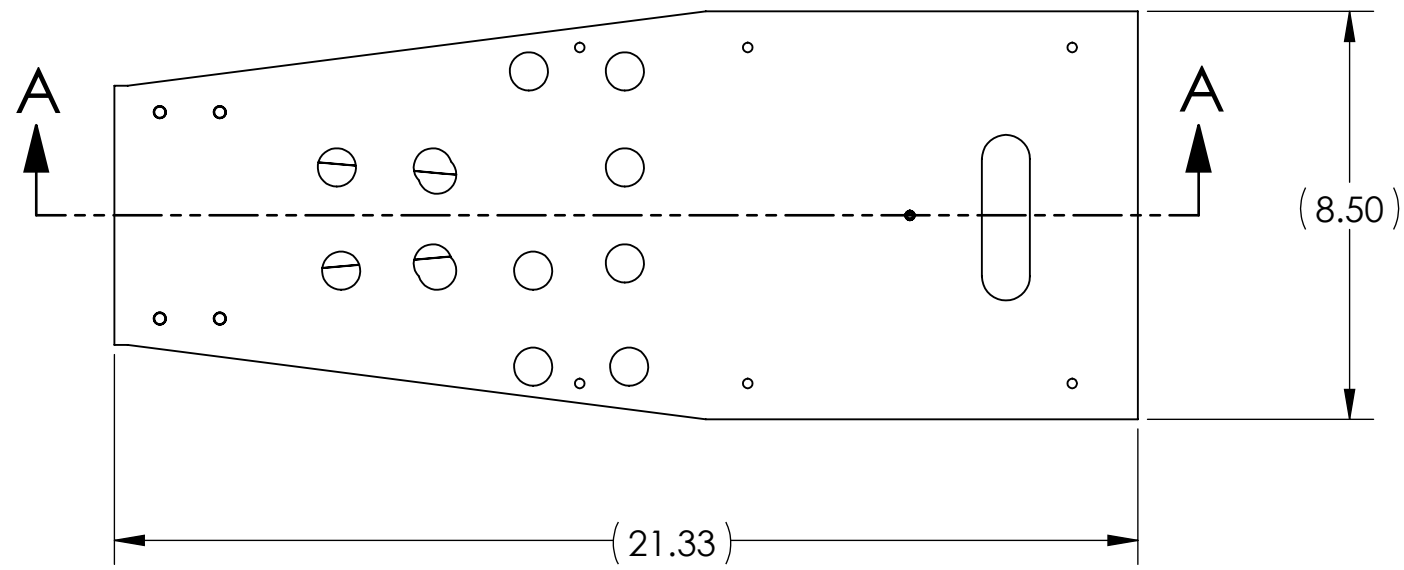
(15.91)

(18.69)

LIGO CALIFORNIA INSTITUTE OF TECHNOLOGY
MASSACHUSETTS INSTITUTE OF TECHNOLOGY

SIZE	DWG. NO.	REV.
B	D1200147	v1
SCALE: 1:4		PROJECTION:
		SHEET 2 OF 3

D1200147 aLIGO AOS Fold Mirror Beam Dump Blade Assy, BSC7 H2, PART PDM REV: X-002, DRAWING PDM REV: X-000



LIGO CALIFORNIA INSTITUTE OF TECHNOLOGY MASSACHUSETTS INSTITUTE OF TECHNOLOGY	
SIZE DWG. NO. B	REV. v1
D1200147	
SCALE: 1:4 PROJECTION:	SHEET 3 OF 3