

D1200047 QUGO SUS L1 H1 HAM5 AOS-FI PRE INSTALLATION PLATE, PART PDM REV: X-006, DRAWING PDM REV: X-012

8

7

6

5

4

3

2

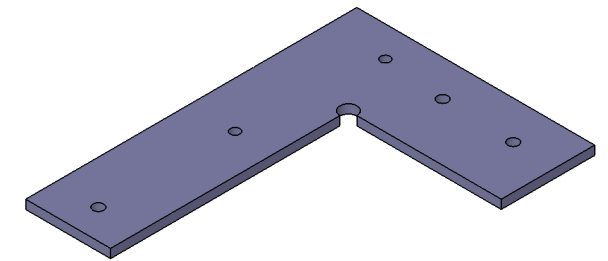
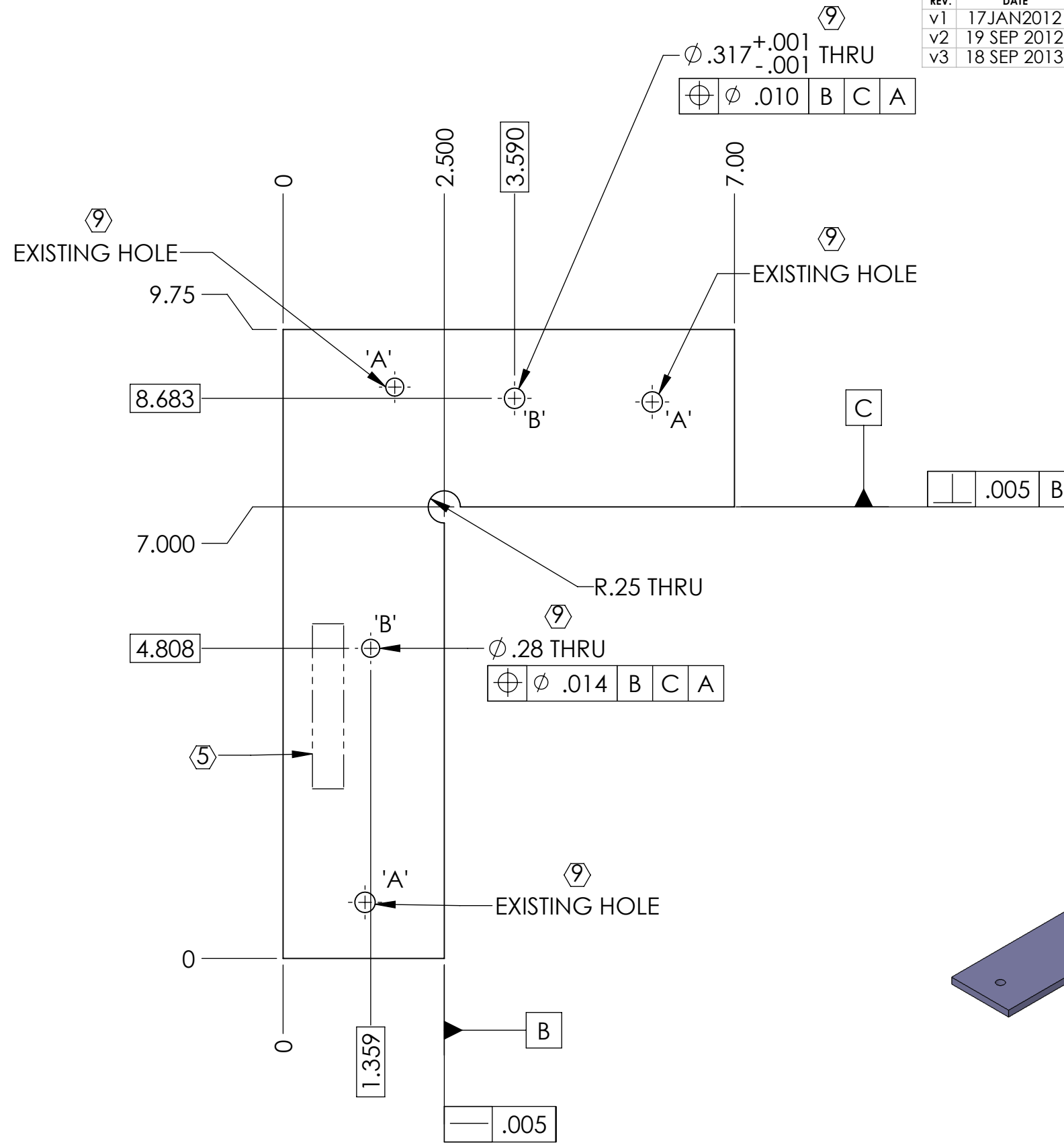
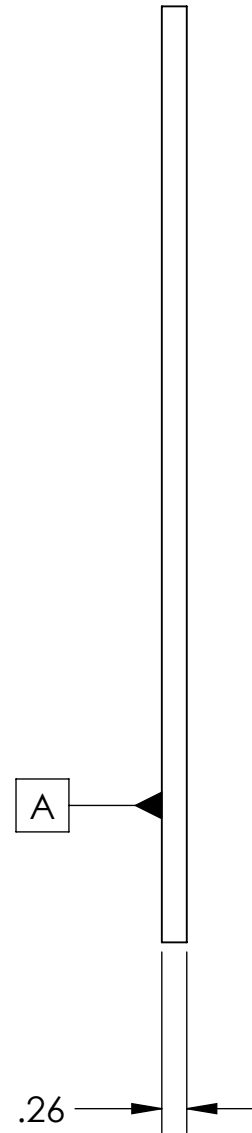
1

**NOTES CONTINUED:**

5. SCRIBE, ENGRAVE (A VIBRATORY TOOL MAY BE USED), LASER MARK OR MECHANICALLY STAMP (NO INKS OR DYES) DRAWING PART NUMBER, REVISION (AND VARIANT OR "TYPE" IF APPLICABLE) ON NOTED SURFACE OF PART FOLLOWED ON THE NEXT LINE WITH A THREE DIGIT SERIAL NUMBER. SERIAL NUMBERS START AT 001 FOR THE FIRST ARTICLE AND PROCEED CONSECUTIVELY. USE MINIMUM 0.12" HIGH CHARACTERS, UNLESS THE SIZE OF THE PART DICTATES SMALLER CHARACTERS. EXAMPLE: DXXXXXX-VY, TYPE-XX, S/N XXX

6. APPROXIMATE WEIGHT = 1.0 LB.
7. MACHINE ALL SURFACES TO REMOVE OXIDES AND MILL FINISH. USE OF ABRASIVE REMOVAL TECHNIQUES IS NOT ALLOWED. REFER TO LIGO-E0900364
8. ALL PARTS SHALL BE MANUFACTURED IN ACCORDANCE WITH LIGO SPECIFICATION E0900364.
9. LABEL HOLES AS SHOWN.

REV.	DATE	DCN #	DRAWING TREE #
v1	17 JAN 2012	E1200052	-
v2	19 SEP 2012	E1200865-x0	-
v3	18 SEP 2013	E1300716-x0	-



# HAM5-L1

(SEE SHEET 2 FOR H1 LAYOUT)

NOTES AND TOLERANCES: (UNLESS OTHERWISE SPECIFIED)	
DIMENSIONS ARE IN INCHES	
TOLERANCES: .XX ± .01 .XXX ± .005	
ANGULAR ± 0.5°	
1. INTERPRET DRAWING PER ASME Y14.5-1994. 2. REMOVE ALL SHARP EDGES, .005-.015, FOR MACHINED PARTS. ROUND ALL EDGES APPROXIMATELY R.02 FOR SHEET METAL PARTS. 3. DO NOT SCALE FROM DRAWING. 4. ALL MACHINING FLUIDS MUST BE FULLY SYNTHETIC, FULLY WATER SOLUBLE AND FREE OF SULFUR, SILICONE, AND CHLORINE.	
MATERIAL	6061-T6 Al
FINISH	63 μinch

<b>LIGO</b> CALIFORNIA INSTITUTE OF TECHNOLOGY MASSACHUSETTS INSTITUTE OF TECHNOLOGY	PART NAME		
	qLIGO SUS L1 H1 HAM5 AOS-FI PRE INSTALLATION PLATE		
	DESIGNER	sbarnum 9 Jan 2012	
	DRAFTER	SBARNUM 29 Jan 2012	
SYSTEM	ADVANCED LIGO	SUB-SYSTEM	SUS
CHECKER	DBRIDGES	APPROVAL	MMEYER
NEXT ASSY	D1102449		SCALE: 1:2

SIZE	DWG. NO.	REV.
B	D1200047	v3
PROJECTION:	SHEET 1 OF 2	

8

7

6

5

4

3

2

1

8 7 6 5 4 3 2 1

# HAM5-H1

(SEE SHEET 1 FOR L1 LAYOUT)

D

D

C

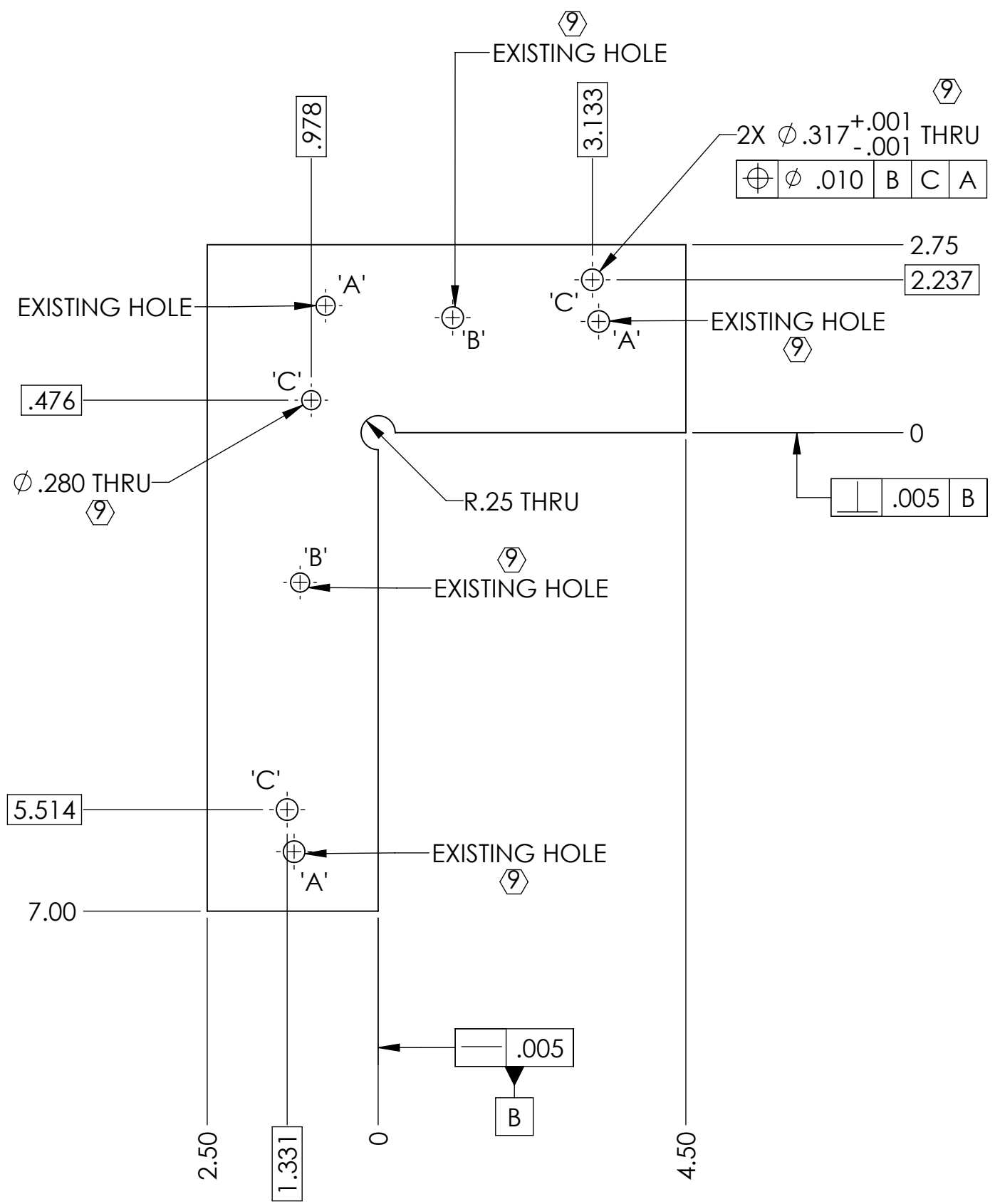
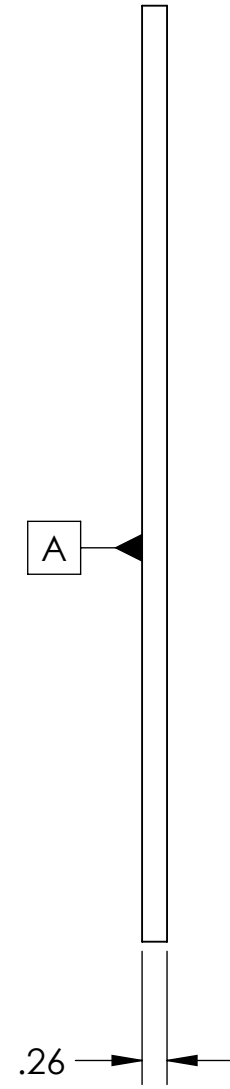
C

B

B

A

A



D1200047 dLIGO SUS L1 H1 HAM5 AOS-FI PRE INSTALLATION PLATE, PART PDM REV: X-006, DRAWING PDM REV: X-012

**LIGO** CALIFORNIA INSTITUTE OF TECHNOLOGY  
 MASSACHUSETTS INSTITUTE OF TECHNOLOGY

SIZE	DWG. NO.	REV.
B	D1200047	v3
SCALE: 1:2	PROJECTION:	SHEET 2 OF 2

8 7 6 5 4 3 2 1