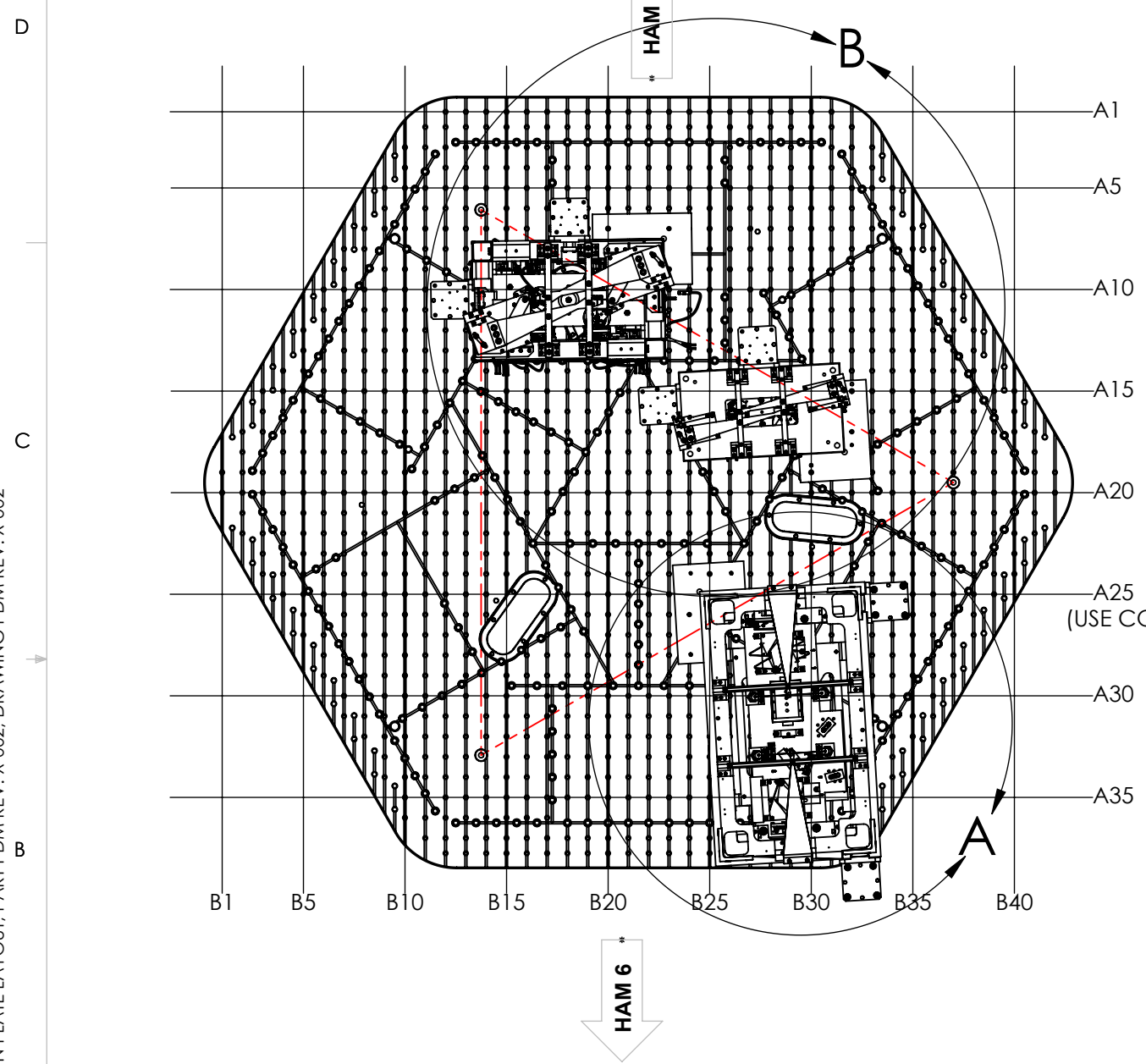
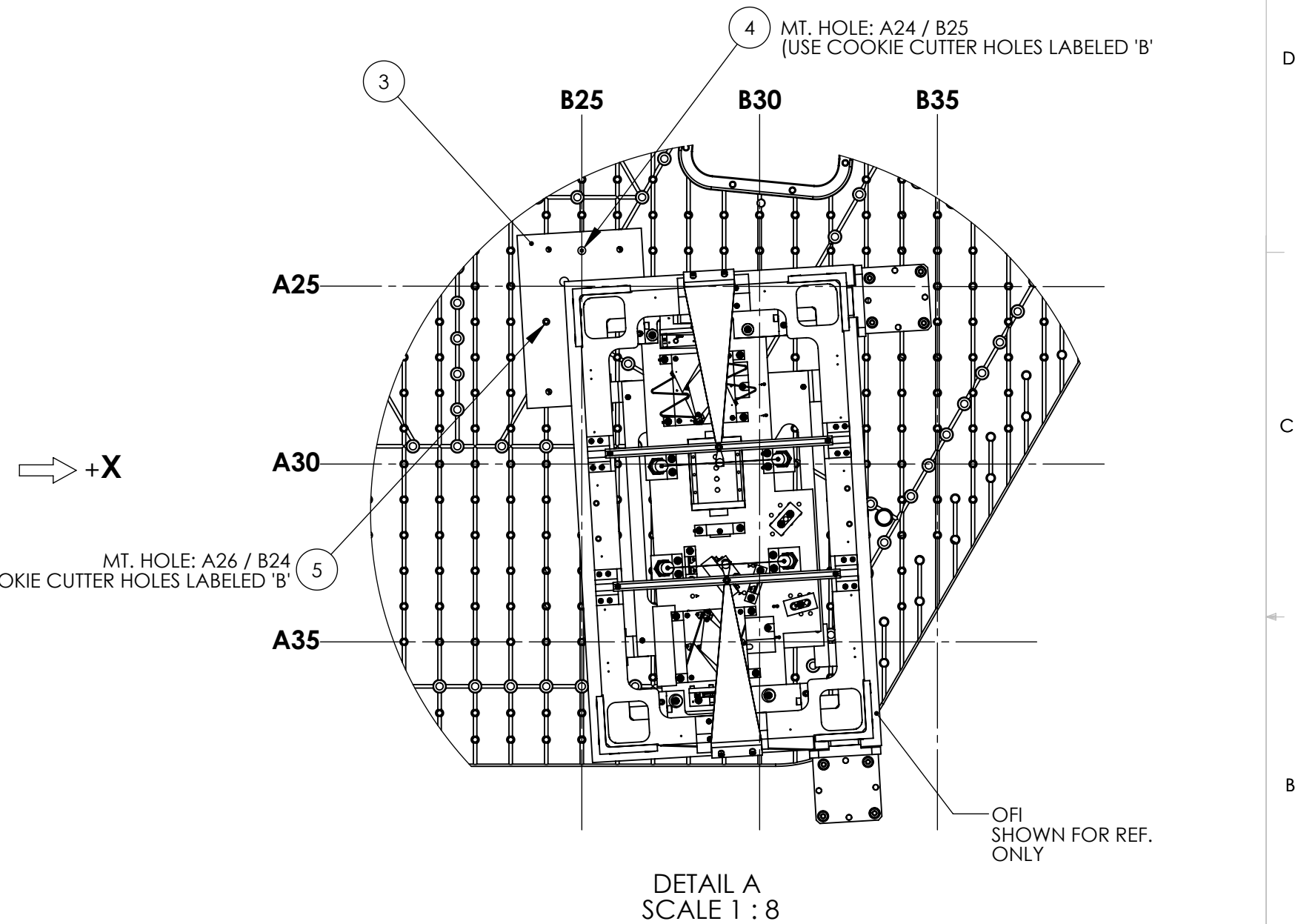


D1102449 aLIGO SUS L1 H1 HAM5 PRE INSTALLATION PLATE LAYOUT, PART PDM REV: X-002, DRAWING PDM REV: X-002

REV.	DATE	DCN #	DRAWING TREE #
v1	10 JAN 2012	-	-
v2	05 OCT 2012	-	-
-	-	-	-



**TOP VIEW \***  
 (REF. TRIANGLE: SEE G1000125 FOR  
 ISI NAMING AND ORIENTATION CONVENTION)



ITEM NO.	PART NUMBER	DESCRIPTION	QTY.
5	McMaster 92185A540	SHCS 1/4"-20 x 3/4" 18-8	3
4	McMaster 97345A567	SSHCS 5/16"x1/4", 1/4"-20 x 7/16", 18-8 SST	5
3	D1200047	aLIGO SUS L1 H1 HAM5 AOS-FI PRE INSTALLATION PLATE	1
2	D1102450	aLIGO SUS L1 H1 HAM5 HSTS PRE INSTALLATION PLATE	1
1	D1102451	aLIGO SUS L1 H1 HAM5 HLTS PRE INSTALLATION PLATE	1

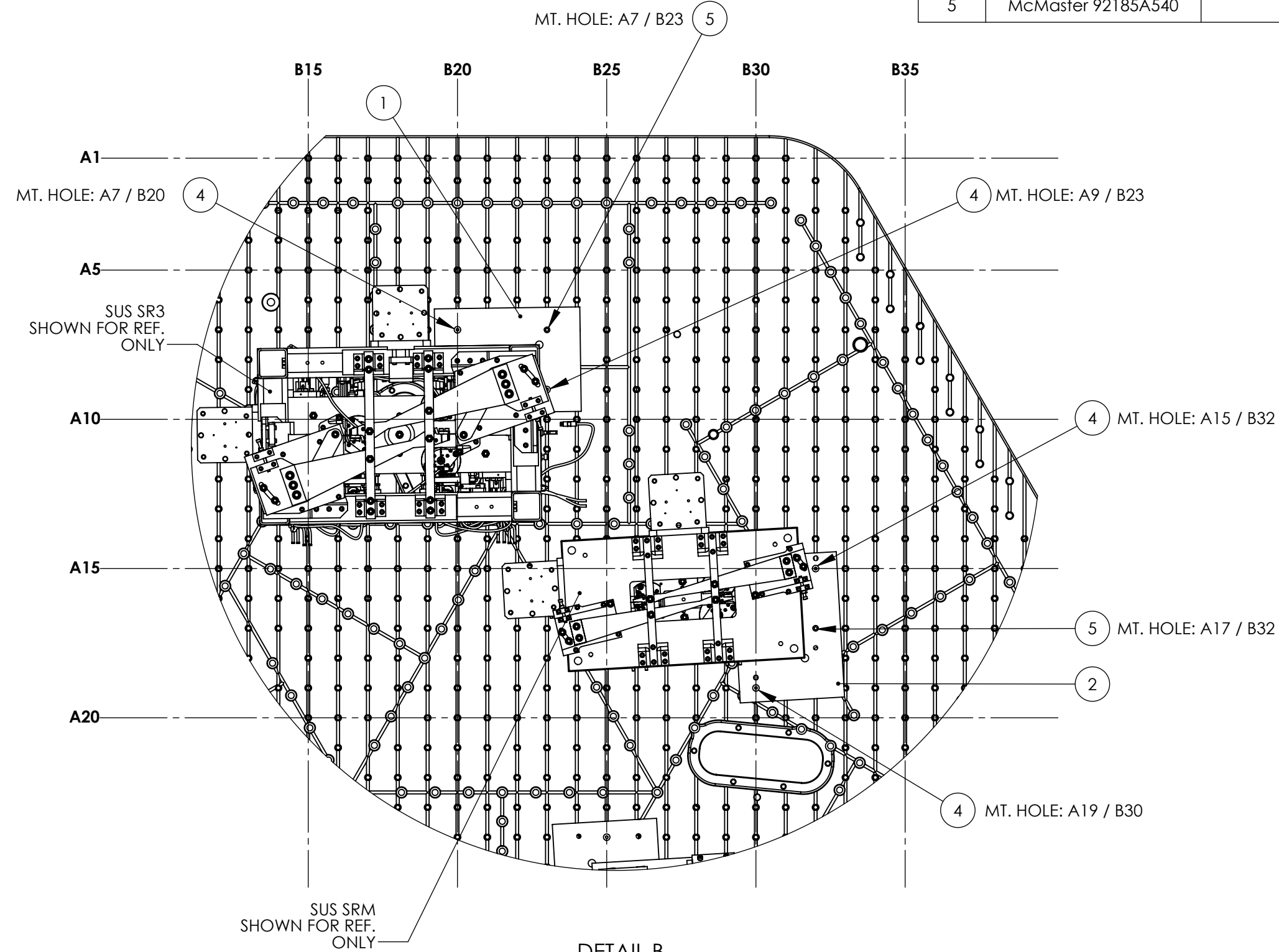
NOTES AND TOLERANCES: (UNLESS OTHERWISE SPECIFIED)

\*SEE LIGO D1101296 FOR HAM ISI HOLE TAB.

MATERIAL		FINISH		NEXT ASSY		PART NAME		SIZE		DWG. NO.		REV.	
--		-- μinch		D0901129 D0900456		ADVANCED LIGO SUS		B		D1102449		v2	
LIGO CALIFORNIA INSTITUTE OF TECHNOLOGY MASSACHUSETTS INSTITUTE OF TECHNOLOGY aLIGO, SUS, L1 H1 HAM5 PRE INSTALLATION PLATE LAYOUT												SCALE: 1:16 PROJECTION:  SHEET 1 OF 2	

D1102449 αLIGO SUS L1 H1 HAM5 PRE INSTALLATION PLATE LAYOUT, PART PDM REV: X-002, DRAWING PDM REV: X-002

PARTS LIST			
ITEM NO.	PART NUMBER	DESCRIPTION	REQ
1	D1102451	αLIGO SUS L1 H1 HAM5 HLTS PRE INSTALLATION PLATE	1
2	D1102450	αLIGO SUS L1 H1 HAM5 HSTS PRE INSTALLATION PLATE	1
3	D1200047	αLIGO SUS L1 H1 HAM5 AOS-FI PRE INSTALLATION PLATE	1
4	McMaster 97345A567	SSHCS 5/16"x1/4", 1/4"-20 x 7/16", 18-8 SST	5
5	McMaster 92185A540	SHCS 1/4"-20 x 3/4" 18-8	3



DETAIL B  
SCALE 1 : 8

CALIFORNIA INSTITUTE OF TECHNOLOGY  
 MASSACHUSETTS INSTITUTE OF TECHNOLOGY

SIZE	DWG. NO.	REV.
B	D1102449	v2
SCALE: 1:2	PROJECTION:	SHEET 2 OF 2