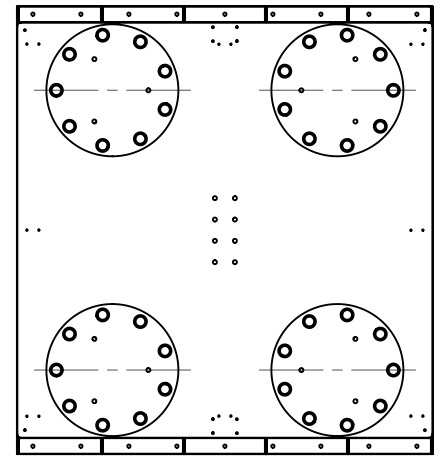
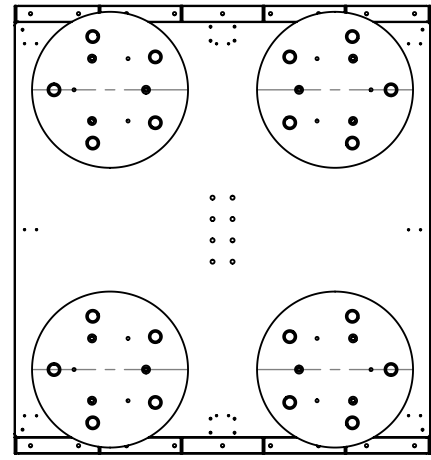
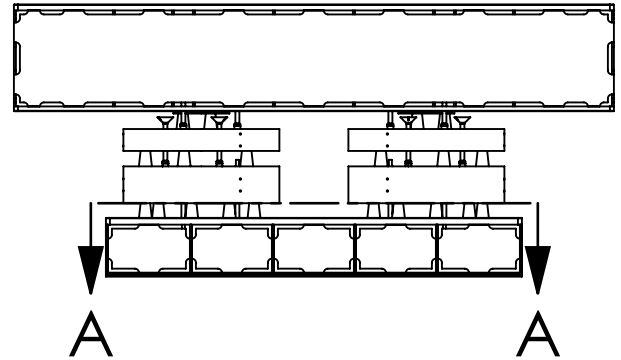
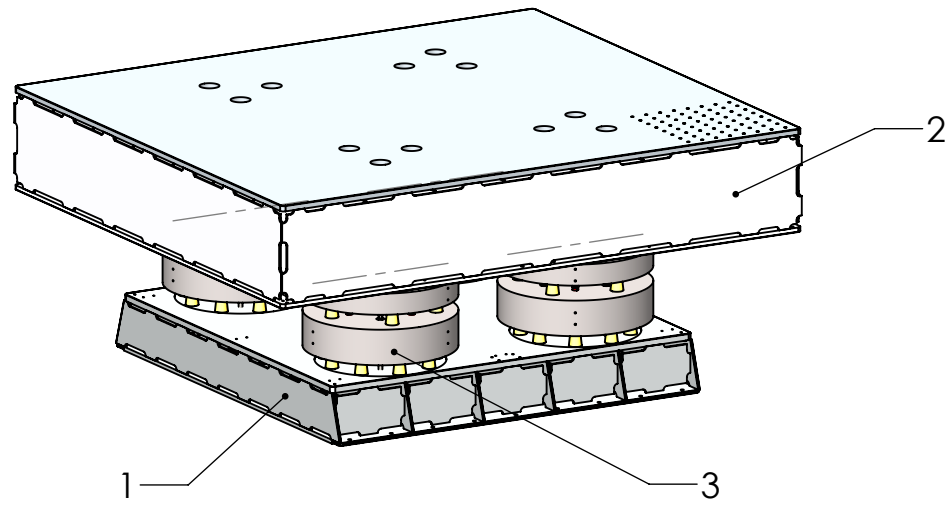


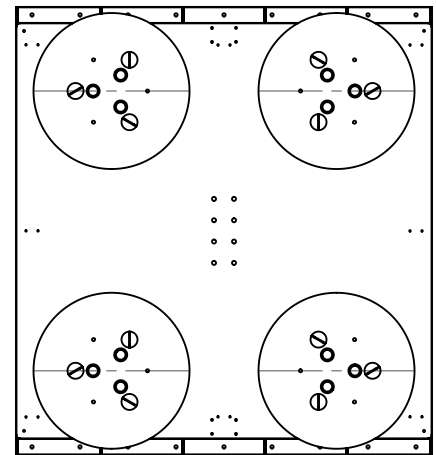
D1102387-ALIGO HAM Optics Table Assembly, PART PDM REV: X-005, DRAWING PDM REV: X-004

REV.	DATE	DCN #	DRAWING TREE #
-	-	-	-
-	-	-	-
-	-	-	-



SECTION A-A

Leg Stack Assemblies are placed on cutouts on the surface of the HAM Support Table



ITEM NO.	PART NUMBER	DESCRIPTION	MATERIAL	Default/R EQ	SPARE	TOTAL
3	D1102388	ALIGO HAM Viton Spring Leg Stack Assembly		4		0
2		HAM Optics Table Assembly		1		0
1		HAM Support Table Assembly		1		0

PARTS LIST

NOTES AND TOLERANCES: (UNLESS OTHERWISE SPECIFIED)

DIMENSIONS ARE IN
 TOLERANCES:
 .XX ±
 .XXX ±
 ANGULAR ± °

MATERIAL FINISH μinch

SYSTEM SEI SUB-SYSTEM

NEXT ASSY

LIGO CALIFORNIA INSTITUTE OF TECHNOLOGY MASSACHUSETTS INSTITUTE OF TECHNOLOGY

PART NAME ALIGO HAM Optics Table Assembly- Passive Stack

DESIGNER S Foley DRAFTER CHECKER APPROVAL

SIZE DWG. NO. **B** **D1102387** REV. v3

SCALE: 1:24 PROJECTION: SHEET 1 OF 1