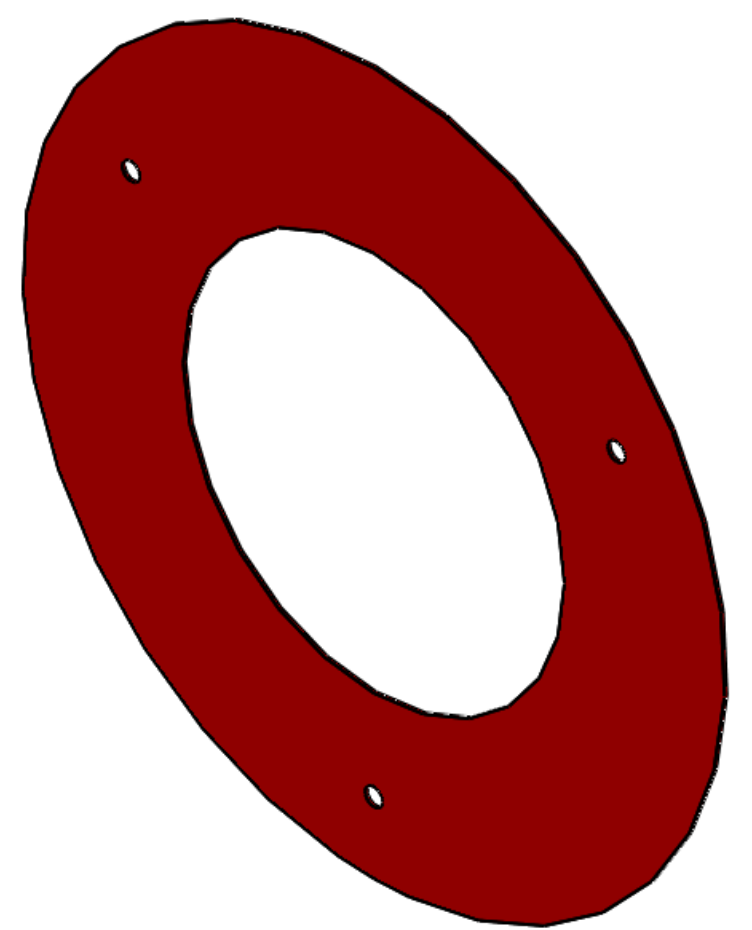
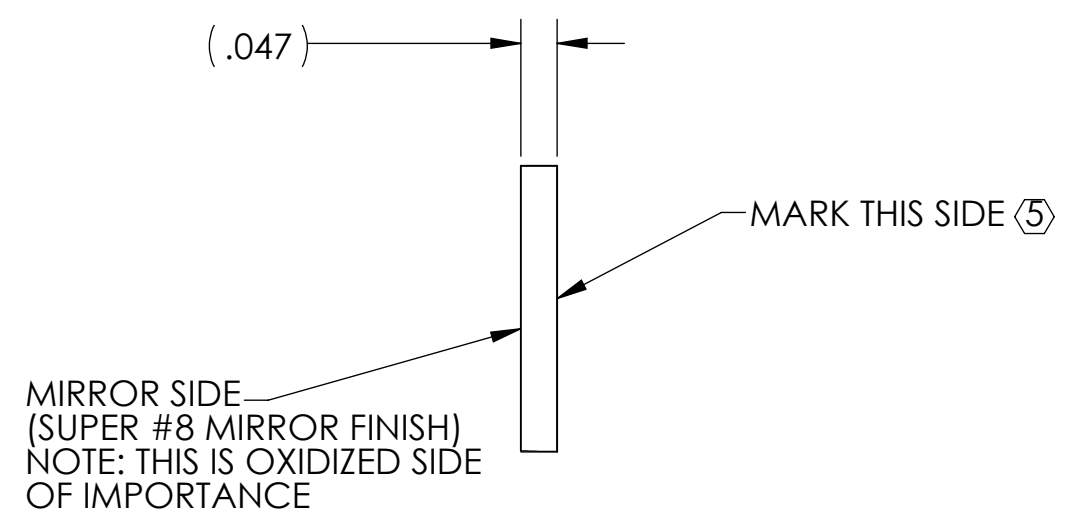
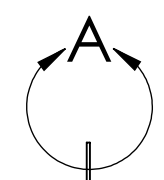
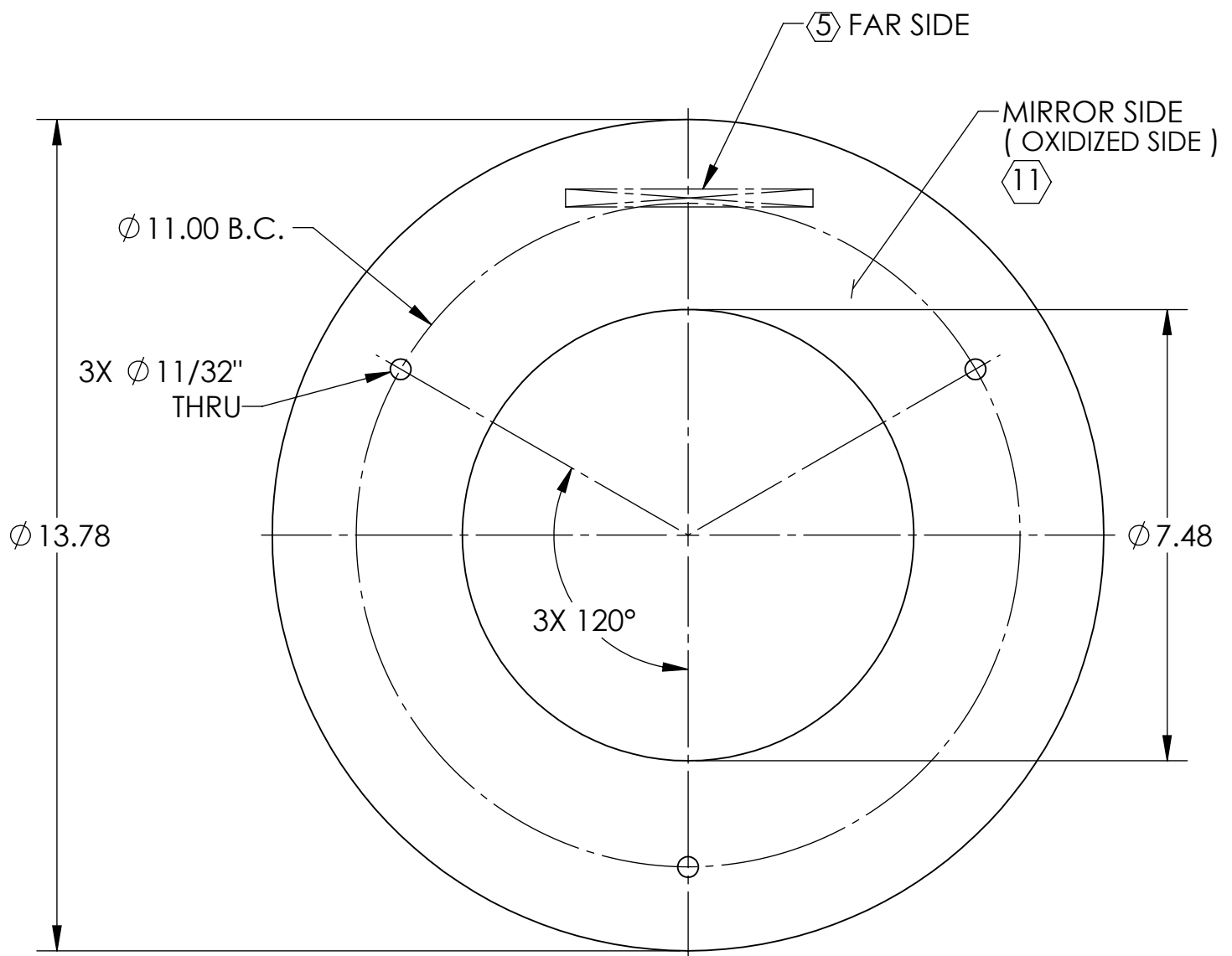


| REV. | DATE | DCN # | DRAWING TREE # |
|------|-------------|----------|----------------|
| v1 | 09 FEB 2012 | E1101204 | - |
| v2 | 17 MAY 2012 | E1101204 | - |
| - | - | - | - |

NOTES CONTINUED:

- ⑤ SCRIBE, ENGRAVE (A VIBRATORY TOOL MAY BE USED), OR LASER MARK (NO INKS OR DYES) DRAWING PART NUMBER, REVISION (AND VARIANT OR "TYPE" IF APPLICABLE) ON NOTED SURFACE OF PART FOLLOWED ON THE NEXT LINE WITH A THREE DIGIT SERIAL NUMBER. SERIAL NUMBERS START AT 001 FOR THE FIRST ARTICLE AND PROCEED CONSECUTIVELY. USE MINIMUM 0.12" HIGH CHARACTERS, UNLESS THE SIZE OF THE PART DICTATES SMALLER CHARACTERS. EXAMPLE: DXXXXXXX-VY, TYPE-XX, S/N XXX
- 6. MASS: 1.425 LB].
- 7. ALL PARTS SHALL BE MANUFACTURED IN ACCORDANCE WITH LIGO SPECIFICATION E0900364.
- 8. ALL MATERIAL IS TO BE VIRGIN MATERIAL (i.e. NO WELD REPAIRS, PLUGS OR RECYCLED MATERIAL). NO REPAIRS SHALL BE MADE UNLESS APPROVED IN ADVANCE, AND IN WRITING, BY LIGO LABORATORY. REFER TO LIGO-E0900364.
- ⑨ 304 STAINLESS STEEL, .047 ± .003 INCH THICK, SUPER #8 MIRROR FINISH ONE SIDE.
- 10. PARTS WORKED TO THE DIMENSIONS OF THIS DRAWING SHALL HAVE SURFACE FINISH AS-PROCESSED FROM MILL/SUPPLIER, FREE FROM SCRATCHES OR GOUGES.
- ⑪ DIMENSIONALLY COMPLETE PARTS TO BE OXIDIZED PER LIGO SPECIFICATION E1100842, SECTIONS 2.2 THROUGH 4.2.
NOTE: THE OXIDIZED SIDE OF IMPORTANCE IS THE SIDE IN OPTICAL USE



D1102297_d110 TMS TELESCOPE SSSL Baffle Plate, PART PDM REV: X-012, DRAWING PDM REV: X-012

| NOTES AND TOLERANCES: (UNLESS OTHERWISE SPECIFIED) | |
|---|------------|
| DIMENSIONS ARE IN INCHES | |
| TOLERANCES: .XX ± .01 .XXX ± .005 | |
| ANGULAR ± 1.0° | |
| 1. INTERPRET DRAWING PER ASME Y14.5-1994. 2. REMOVE ALL SHARP EDGES, .005-.015, FOR MACHINED PARTS. ROUND ALL EDGES APPROXIMATELY R.02 FOR SHEET METAL PARTS. 3. DO NOT SCALE FROM DRAWING. 4. ALL MACHINING FLUIDS MUST BE FULLY SYNTHETIC, FULLY WATER SOLUBLE AND FREE OF SULFUR, SILICONE, AND CHLORINE. | |
| MATERIAL | 304 SSSL ⑨ |
| FINISH | ⑪ |

| | | | |
|---|-------------|---------------------------------------|---------------|
| CALIFORNIA INSTITUTE OF TECHNOLOGY MASSACHUSETTS INSTITUTE OF TECHNOLOGY | | PART NAME | |
| ADVANCED LIGO | | αLIGO TMS TELESCOPE SSSL Baffle Plate | |
| DESIGNER | K. MAILAND | 05 DEC 2011 | SIZE DWG. NO. |
| DRAFTER | J. TERRAZAS | 09 FEB 2012 | B D1102297 |
| CHECKER | SEE DCN | | REV. |
| APPROVAL | SEE DCN | | v2 |
| NEXT ASSY | | SCALE: NONE PROJECTION: | |
| D1102361 | | SHEET 1 OF 1 | |