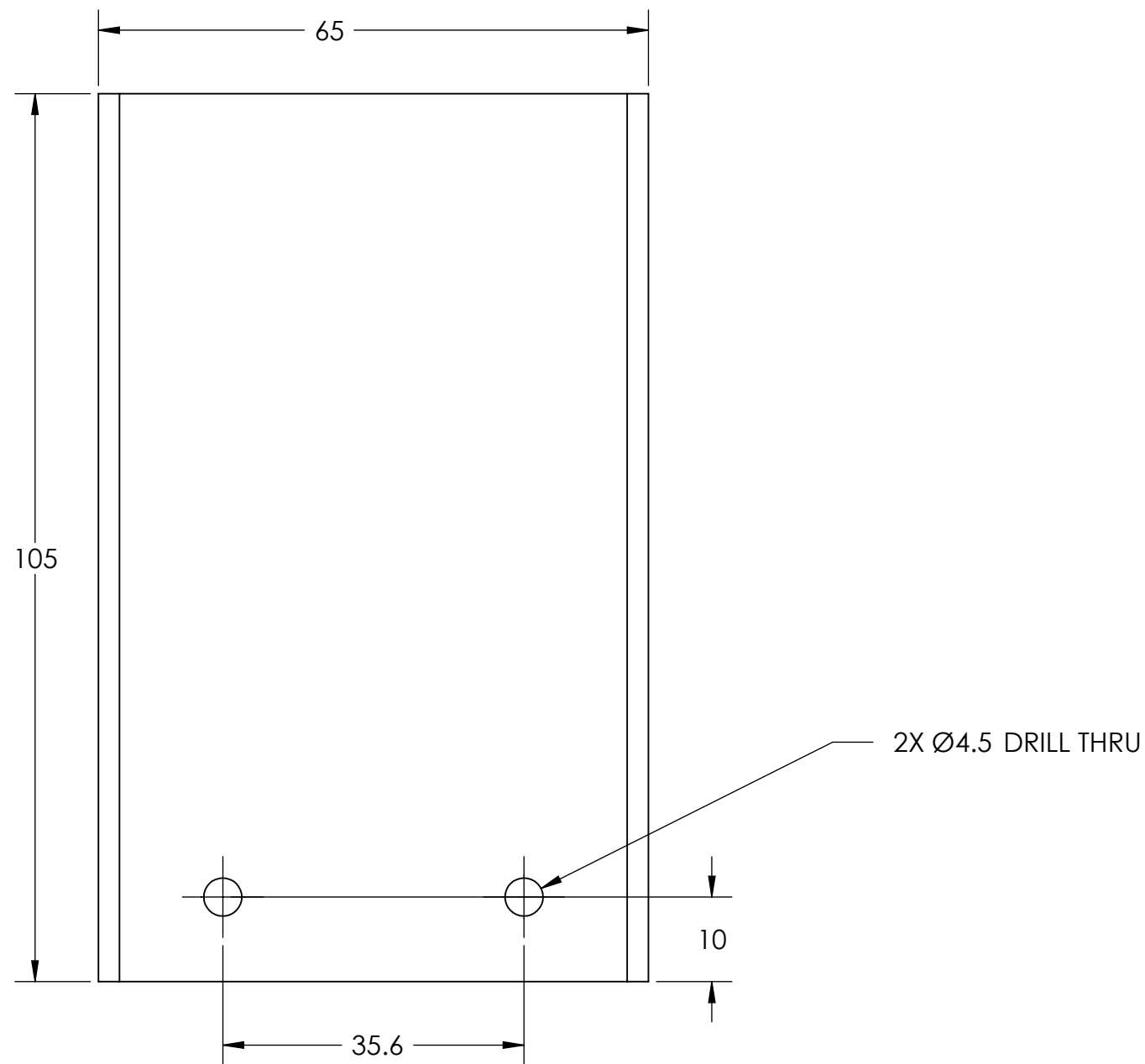
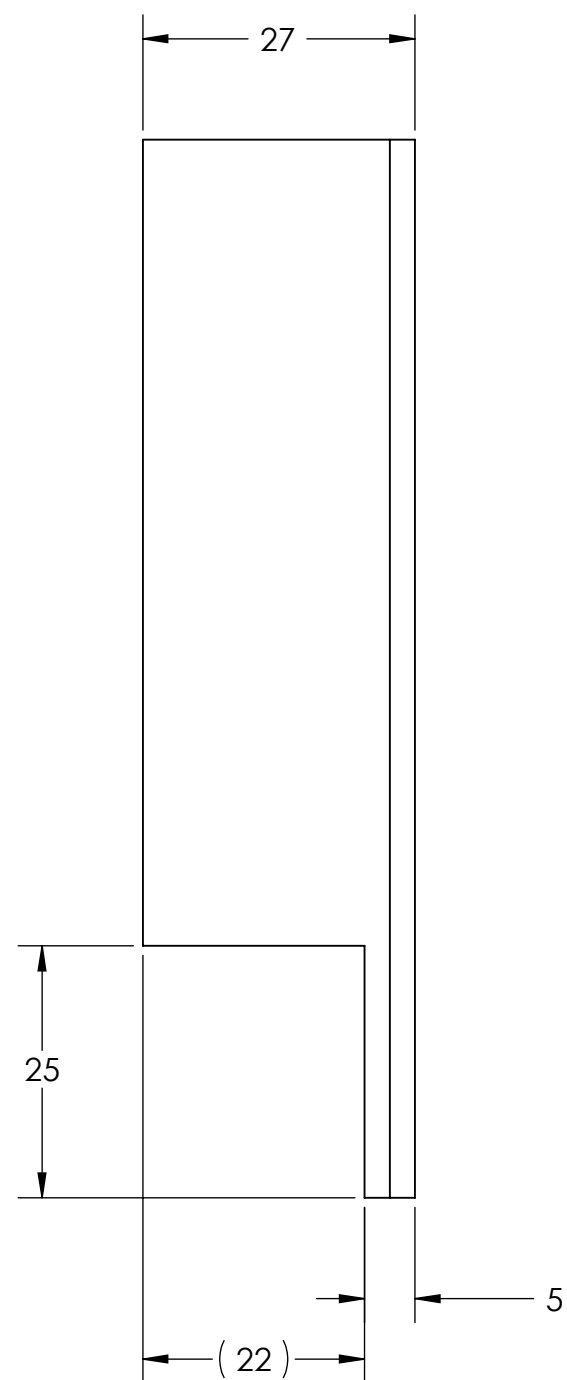
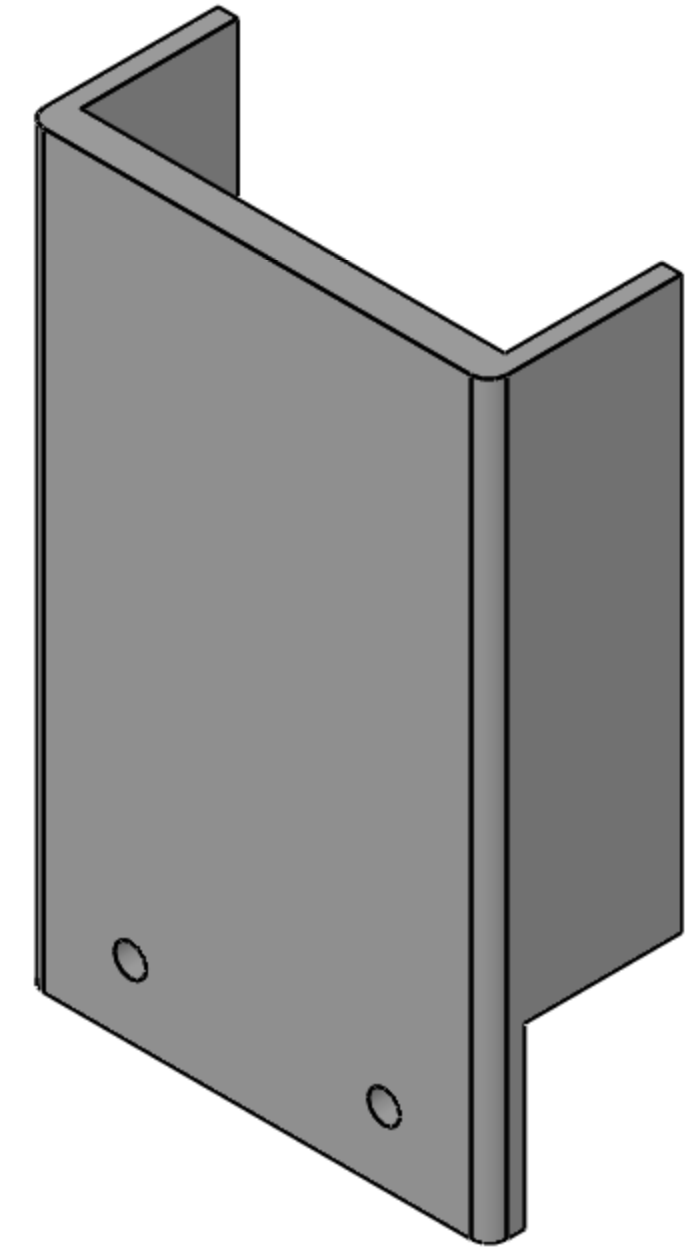
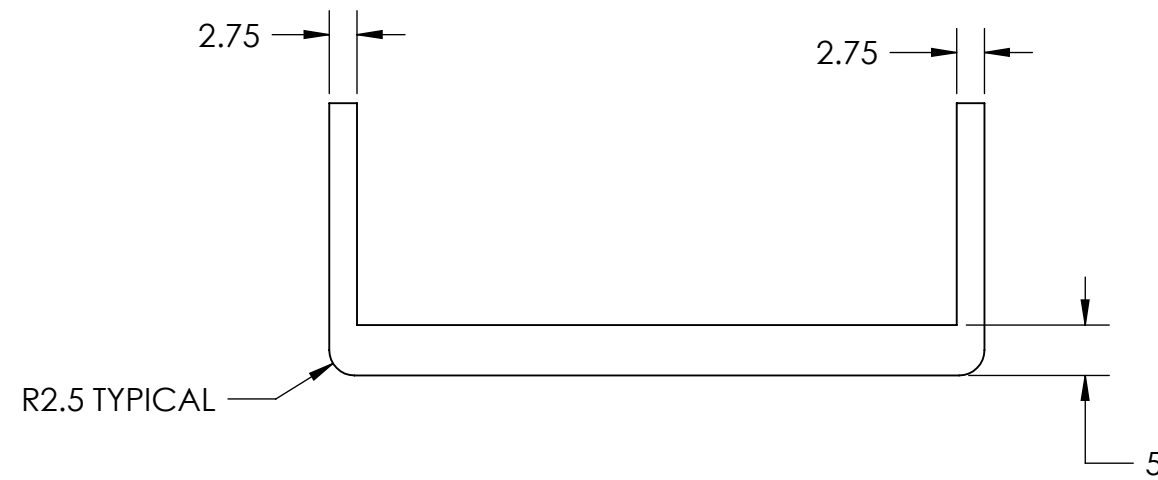


NOTES CONTINUED:

⑤ SCRIBE, ENGRAVE, OR MECHANICALLY STAMP (NO INKS OR DYES) DRAWING PART NUMBER AND REVISION ON NOTED SURFACE FOLLOWED ON THE NEXT LINE BY A THREE DIGIT SERIAL NUMBER. SERIAL NUMBERS START AT 001 FOR THE FIRST ARTICLE AND PROCEED CONSECUTIVELY. USE .07" HIGH CHARACTERS. EXAMPLE: DXXXXXXX-VY, S/N 001. A VIBRATORY TOOL MAY BE USED.

⑥ MACHINE ALL SURFACES.

REV.	DATE	DCN #	DRAWING TREE #



NOTES AND TOLERANCES: (UNLESS OTHERWISE SPECIFIED)

DIMENSIONS ARE IN MM

TOLERANCES:
 .X ± 0.1
 .XX ± 0.01

ANGULAR ± 0.2°

1. INTERPRET DRAWING PER ASME Y14.5-1994.
2. REMOVE ALL SHARP EDGES, R.2 MIN.
3. DO NOT SCALE FROM DRAWING.
4. ALL MACHINING FLUIDS MUST BE FULLY SYNTHETIC, FULLY WATER SOLUBLE AND FREE OF SULFUR, SILICONE, AND CHLORINE.

MATERIAL
 6061-T6 Al

FINISH
 1.6 µm



SYSTEM
 ADVANCED LIGO

SUB-SYSTEM
 SUS

NEXT ASSY

PART NAME

fibre guard window cover

DESIGNER L.CUNNINGHAM 25/11/11
 DRAFTER L.Cunningham 04/11/11
 CHECKER
 APPROVAL

SIZE
 c

DWG. NO.
 D1102271

REV.
 v1

SCALE: 1:0.75 PROJECTION: SHEET 1 OF 1