

NOTES CONTINUED:

BAG AND TAG INDIVIDUAL PARTS WITH THE PARTNUMBER, REVISION NUMBER AND UNIQUE THREE DIGIT SERIAL NUMBER. SERIAL NUMBERS START AT 001 FOR THE FIRST ARTICLE AND PROCEED CONSECUTIVELY.

EXAMPLE:

D1102209-V1-001

6. APPROXIMATE WEIGHT = 0.01 LB.

REV.	DATE	DCN #	DRAWING TREE #
-	-	-	-
-	-	-	-
-	-	-	-

D

D

C

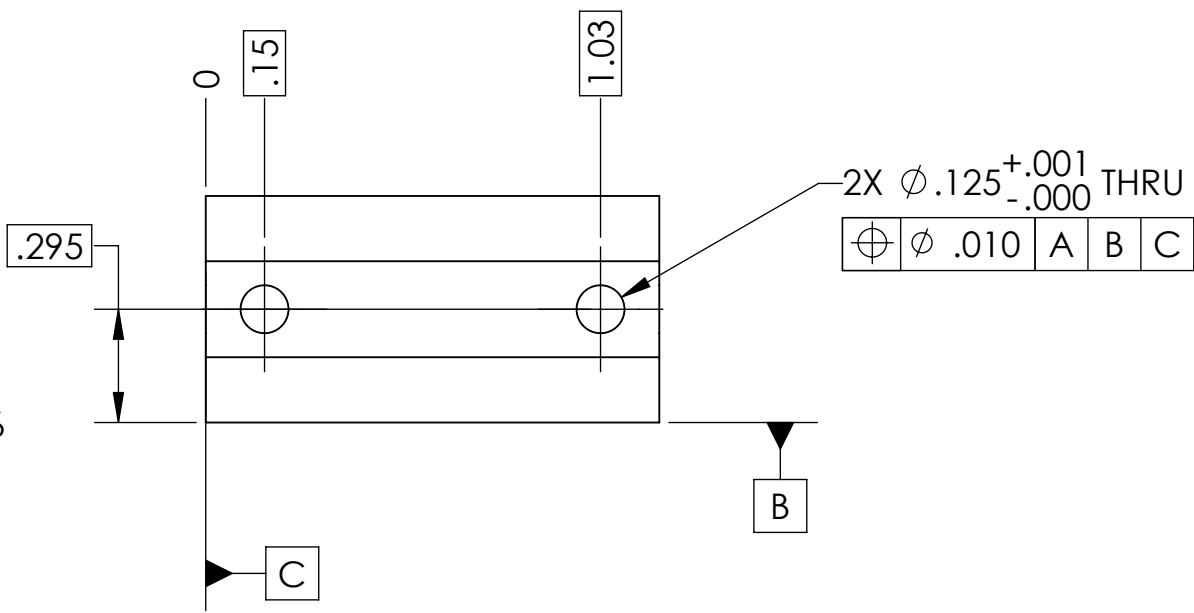
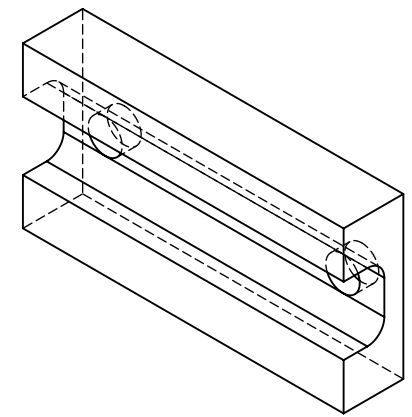
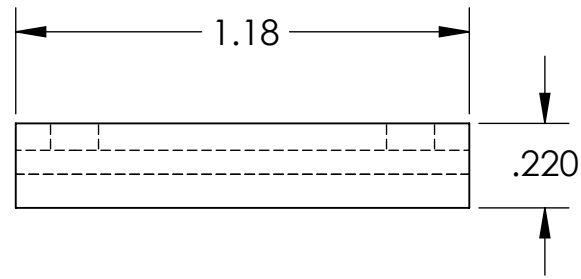
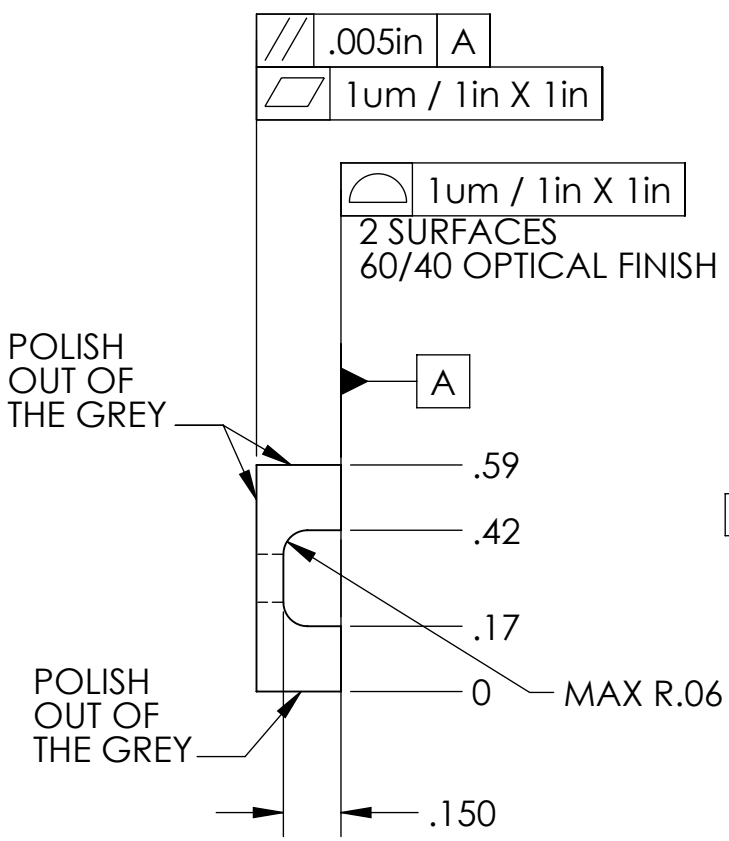
C

B

B

A

A



NOTES AND TOLERANCES: (UNLESS OTHERWISE SPECIFIED)

DIMENSIONS ARE IN INCHES [MM]
 TOLERANCES:
 .XX ± .01
 .XXX ± .005
 ANGULAR ± 0.5°

1. INTERPRET DRAWING PER ASME Y14.5-1994.
 2. REMOVE ALL SHARP EDGES .005-.015. FOR MACHINED PARTS. ROUND ALL EDGES APPROXIMATELY R.02 FOR SHEET METAL PARTS.
 3. DO NOT SCALE FROM DRAWING.
 4. ALL MACHINING FLUIDS MUST BE FULLY SYNTHETIC, FULLY WATER SOLUBLE AND FREE OF SULFUR, SILICONE, AND CHLORINE.

MATERIAL Fused Silica
FINISH See Notes

LIGO CALIFORNIA INSTITUTE OF TECHNOLOGY
 MASSACHUSETTS INSTITUTE OF TECHNOLOGY

SYSTEM ADVANCED LIGO
SUB-SYSTEM ISC
NEXT ASSY D1101965

PART NAME aLIGO OMC PD Mount Glass Block

DESIGNER SWALDMAN	Dec 2011	SIZE A	DWG. NO. D1102211	REV. v2
DRAFTER SBARNUM	20 Dec 2010			
CHECKER SWALDMAN				
APPROVAL PFRITSCHEL		SCALE: 2:1	PROJECTION:	SHEET 1 OF 1