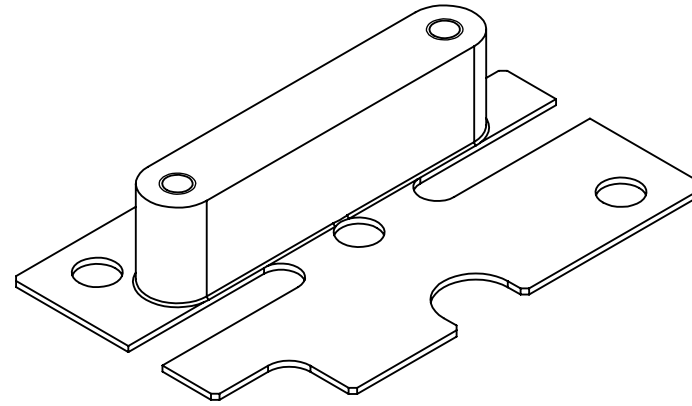


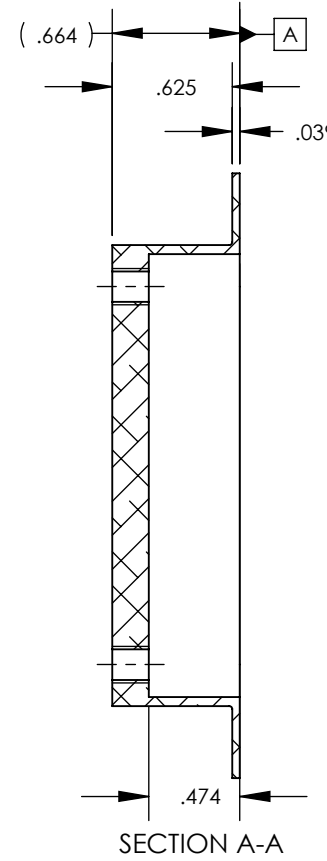
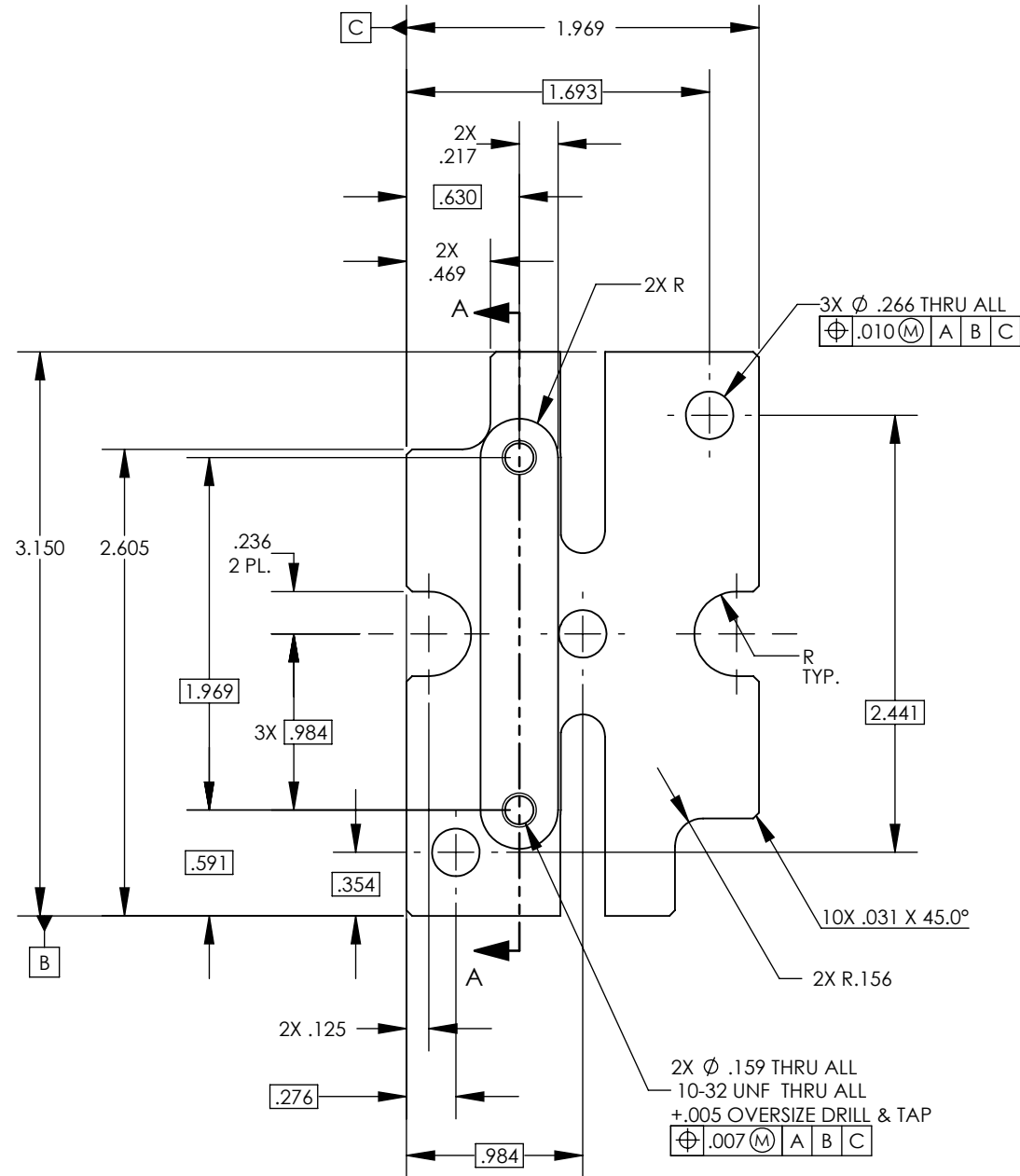
NOTES CONTINUED:

- 5. SCRIBE, ENGRAVE (A VIBRATORY TOOL MAY BE USED), LASER MARK OR MECHANICALLY STAMP (NO INKS OR DYES) DRAWING PART NUMBER, REVISION (AND VARIANT OR "TYPE" IF APPLICABLE) ON NOTED SURFACE OF PART FOLLOWED ON THE NEXT LINE WITH A THREE DIGIT SERIAL NUMBER. SERIAL NUMBERS START AT 001 FOR THE FIRST ARTICLE AND PROCEED CONSECUTIVELY. USE MINIMUM 0.12" HIGH CHARACTERS, UNLESS THE SIZE OF THE PART DICTATES SMALLER CHARACTERS. EXAMPLE: DXXXXXX-VY, TYPE-XX, S/N XXX
- 6. APPROXIMATE WEIGHT = 0.043 LB.
- 7. MACHINE ALL SURFACES TO REMOVE OXIDES AND MILL FINISH, USE OF ABRASIVE REMOVAL TECHNIQUES IS NOT ALLOWED. REFER TO LIGO-E0900364
- 8. ALL PARTS SHALL BE MANUFACTURED IN ACCORDANCE WITH LIGO SPECIFICATION E0900364.
- 9. ALL MATERIAL IS TO BE VIRGIN MATERIAL (i.e. NO WELD REPAIRS, PLUGS OR RECYCLED MATERIAL). NO REPAIRS SHALL BE MADE UNLESS APPROVED IN ADVANCE, AND IN WRITING, BY LIGO LABORATORY. REFER TO LIGO-E0900364.
- 10. UNLESS OTHERWISE SPECIFIED, MACHINE FILLET RADII .010 - .015

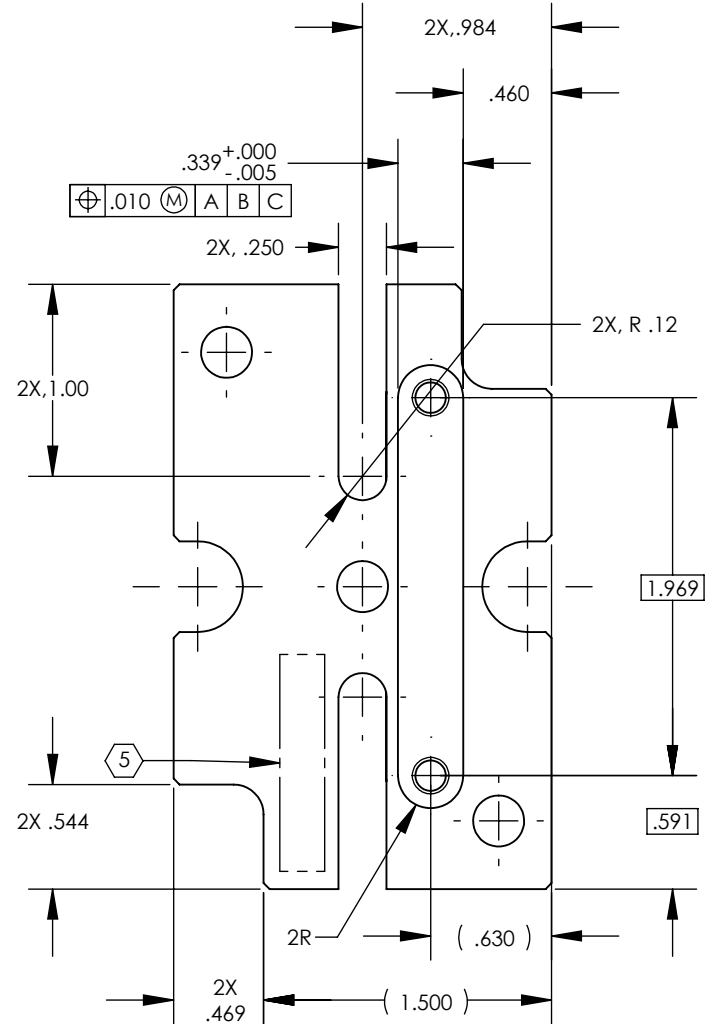
REV.	DATE	DCN #	DRAWING TREE #
v1	02 NOV 2011	-	-
v5	02 NOV 2012	E1200978-x0	-



ISO VIEW



SECTION A-A



D1102133 ALIGO, SUS, QUAD NPTYPE WIRING HARNESS, MASS WIRE CLAMP (REDESIGNED), PART PDM REV: X-007, DRAWING PDM REV: X-009

NOTES AND TOLERANCES: (UNLESS OTHERWISE SPECIFIED)

DIMENSIONS ARE IN INCHES	
TOLERANCES: .XX ± .01 .XXX ± .005	
ANGULAR ± 0.5°	
MATERIAL	N/A
FINISH	N/A μinch

1. INTERPRET DRAWING PER ASME Y14.5-1994.
2. REMOVE ALL SHARP EDGES, .005-.015, FOR MACHINED PARTS. ROUND ALL EDGES APPROXIMATELY R.02 FOR SHEET METAL PARTS.
3. DO NOT SCALE FROM DRAWING.
4. ALL MACHINING FLUIDS MUST BE FULLY SYNTHETIC, FULLY WATER SOLUBLE AND FREE OF SULFUR, SILICONE, AND CHLORINE.

CALIFORNIA INSTITUTE OF TECHNOLOGY MASSACHUSETTS INSTITUTE OF TECHNOLOGY		PART NAME ALIGO, SUS, QUAD NPTYPE WIRING HARNESS, MASS WIRE CLAMP	
SYSTEM ADVANCED LIGO	SUB-SYSTEM SUS	DESIGNER E.SANCHEZ	DATE 02 NOV 2011
NEXT ASSY D1102146	DRFTER E.SANCHEZ	CHECKER SEE DCC	DATE 02 NOV 2011
	APPROVAL SEE DCC	SIZE B	DWG. NO. D1102133
		SCALE: 1:1	PROJECTION:  SHEET 1 OF 1
			REV. v5