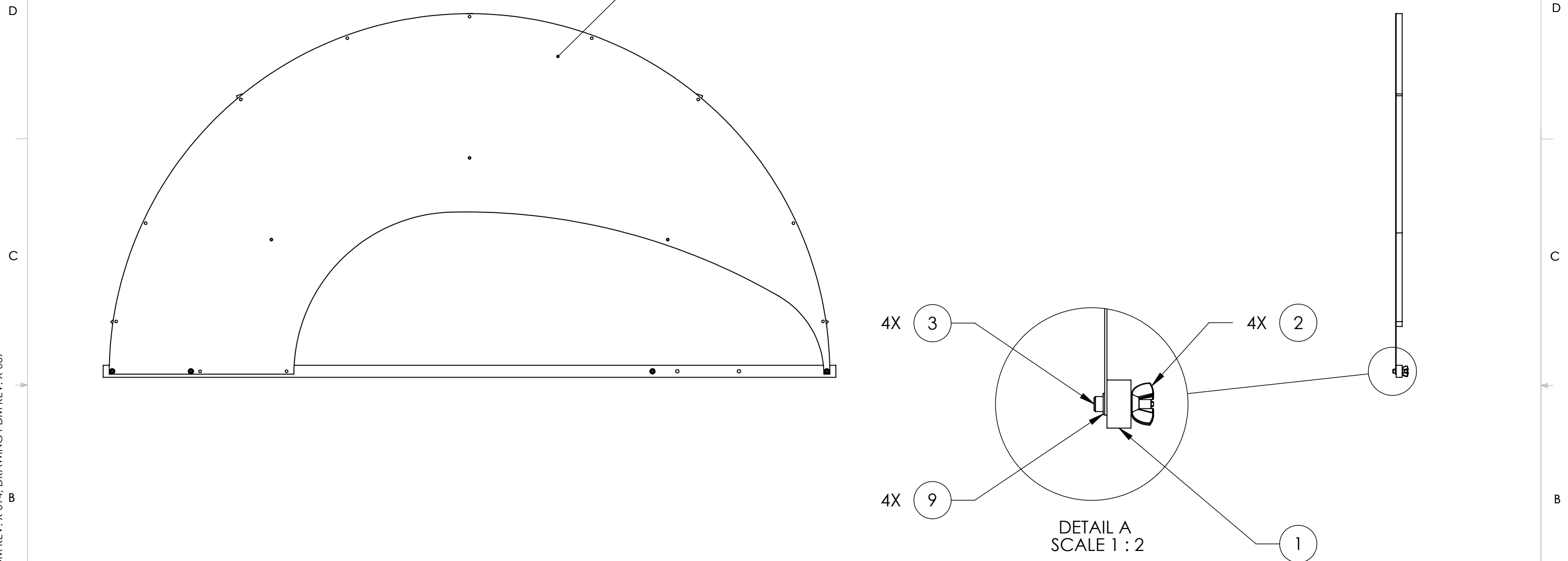


D1102116_MC Tube Baffle, Aperture Support Bar Assy, PART PDM REV: X-014, DRAWING PDM REV: X-007

NOTES CONTINUED:
 5

REV.	DATE	DCN #	DRAWING TREE #
v1	7 NOV 2011	E1101081-v1	-
-	-	-	-
-	-	-	-



ITEM NO.	PART NUMBER	DESCRIPTION	MATERIAL	REQ	TOTAL
9	WF-10	WASHER_#10, U-C COMPONENTS	18-8 SSTL	4	4
3	C-1016-NA	SCREW, SOCKET HEAD CAP, #10-32 UNF-2A X 1 LONG	Ag-PLATED 300 SSTL	4	4
2	92001A311	WING NUT 10-32	18-8 SSTL	4	4
1	D1101973	MODE CLEANER APPERTURE SUPPORT BAR	6061-T6 Al	2	2

PARTS LIST

NOTES AND TOLERANCES: (UNLESS OTHERWISE SPECIFIED)
 DIMENSIONS ARE IN INCHES
 TOLERANCES:
 .XX ± .03
 .XXX ± .010
 ANGULAR ± 1.0°

MATERIAL: N/A
 FINISH: N/A μinch

LIGO CALIFORNIA INSTITUTE OF TECHNOLOGY
 MASSACHUSETTS INSTITUTE OF TECHNOLOGY

SYSTEM: **ADVANCED LIGO** SUB-SYSTEM: **AOS**

PART NAME: **APERTURE SUPPORT BAR ASSY**

DESIGNER: H. KELMAN	21 OCT 2011	SIZE: B	DWG. NO. D1102116	REV. v1
DRAFTER: TQ. NGUYEN	31 OCT 2011			
CHECKER: L. AUSTIN				
APPROVAL: M. SMITH		SCALE: 1:8	PROJECTION:	SHEET 1 OF 1