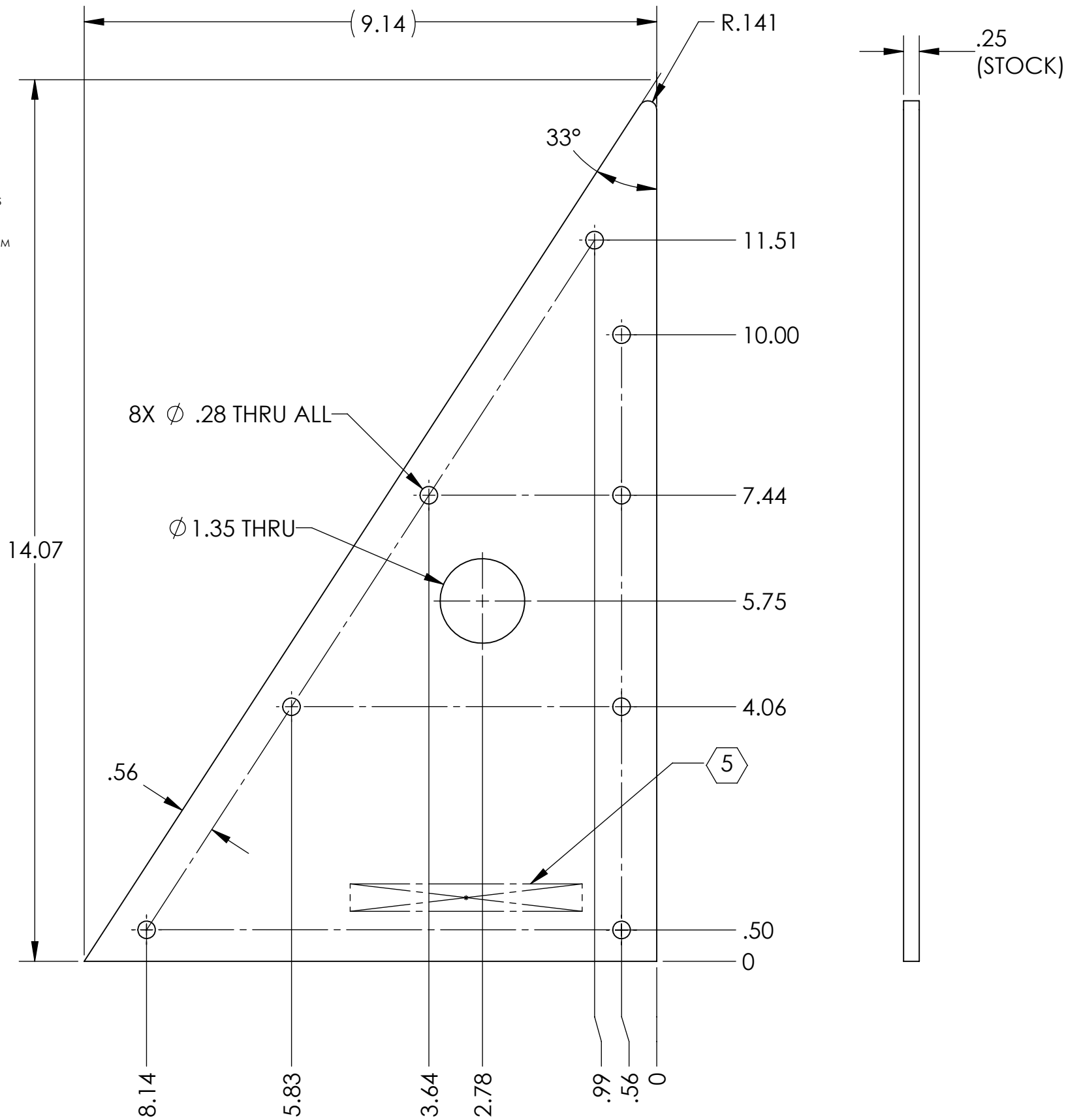


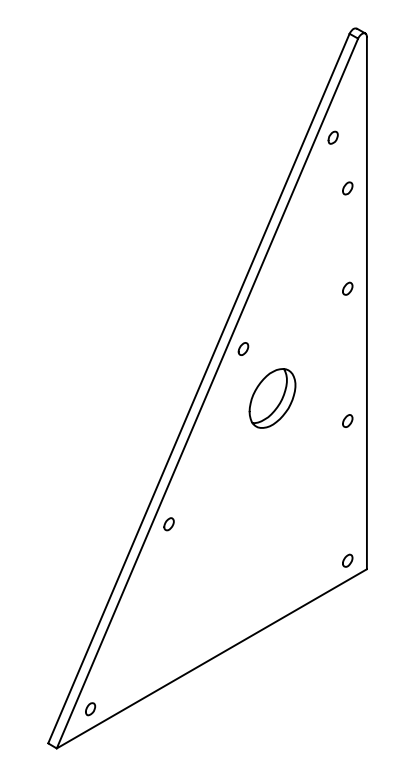
D1102106\_aLIGO AOS SLC FOLD MIRROR BEAM DUMP TOP CAP SKIN, PART PDM REV: X-012, DRAWING PDM REV: X-010

**NOTES CONTINUED:**  
 5. SCRIBE, ENGRAVE (A VIBRATORY TOOL MAY BE USED), LASER MARK OR MECHANICALLY STAMP (NO INKS OR DYES) DRAWING PART NUMBER, REVISION (AND VARIANT OR "TYPE" IF APPLICABLE) ON NOTED SURFACE OF PART FOLLOWED ON THE NEXT LINE WITH A THREE DIGIT SERIAL NUMBER. SERIAL NUMBERS START AT 001 FOR THE FIRST ARTICLE AND PROCEED CONSECUTIVELY. USE MINIMUM 0.12" HIGH CHARACTERS. UNLESS THE SIZE OF THE PART DICTATES SMALLER CHARACTERS. EXAMPLE: DXXXXXX-VY, TYPE-XX, S/N XXX

- 6. APPROXIMATE WEIGHT = 1.519 LBS.
- 7. ALL PARTS SHALL BE MANUFACTURED IN ACCORDANCE WITH LIGO SPECIFICATION E0900364.
- 8. ALL MATERIAL IS TO BE VIRGIN MATERIAL (i.e. NO WELD REPAIRS, PLUGS OR RECYCLED MATERIAL). NO REPAIRS SHALL BE MADE UNLESS APPROVED IN ADVANCE, AND IN WRITING, BY LIGO LABORATORY. REFER TO LIGO-E0900364.
- 9. SURFACE FINISH TO BE AS-PROCESSED FROM MILL/SUPPLIER, FREE FROM SCRATCHES OR GOUGES.
- 10. ELECTROPOLISH PER E0900364, SECTION 5.2.1.2, TO REMOVE ALL SURFACE OXIDE AND POTENTIALLY EMBEDDED CONTAMINANTS.



REV.	DATE	DCN #	DRAWING TREE #
v1	01 NOV 2011	E1200051	-
-	-	-	-
-	-	-	-



NOTES AND TOLERANCES: (UNLESS OTHERWISE SPECIFIED)	
DIMENSIONS ARE IN INCHES	
TOLERANCES: .XX ± .02 .XXX ± .005 ANGULAR ± 1.0°	
MATERIAL	6061-T6 Al
FINISH	63 μinch

CALIFORNIA INSTITUTE OF TECHNOLOGY MASSACHUSETTS INSTITUTE OF TECHNOLOGY		PART NAME aLIGO AOS FOLD MIRROR BEAM DUMP TOP CAP SKIN	
SYSTEM	ADVANCED LIGO	SUB-SYSTEM	AOS
DESIGNER	M. SMITH	DATE	01 NOV 2011
DRAFTER	J. TERRAZAS	SIZE	B
CHECKER		DWG. NO.	D1102106
APPROVAL	M. SMITH	REV.	v1
NEXT ASSY		SCALE	1:4
D1102105		PROJECTION	
		SHEET 1 OF 1	