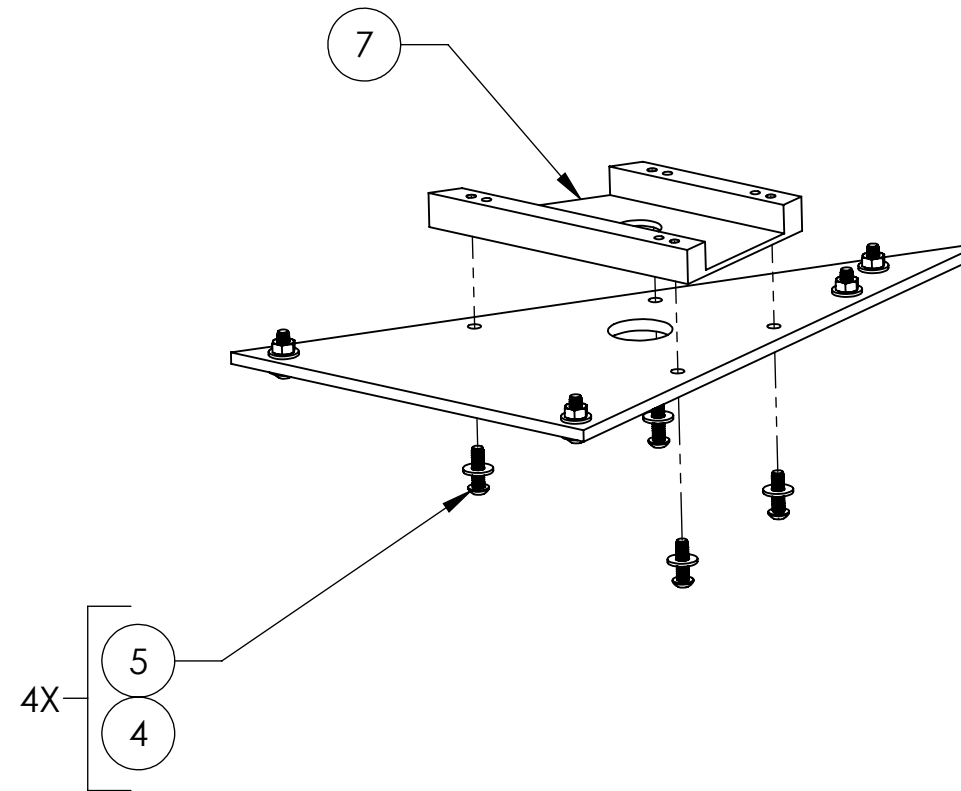
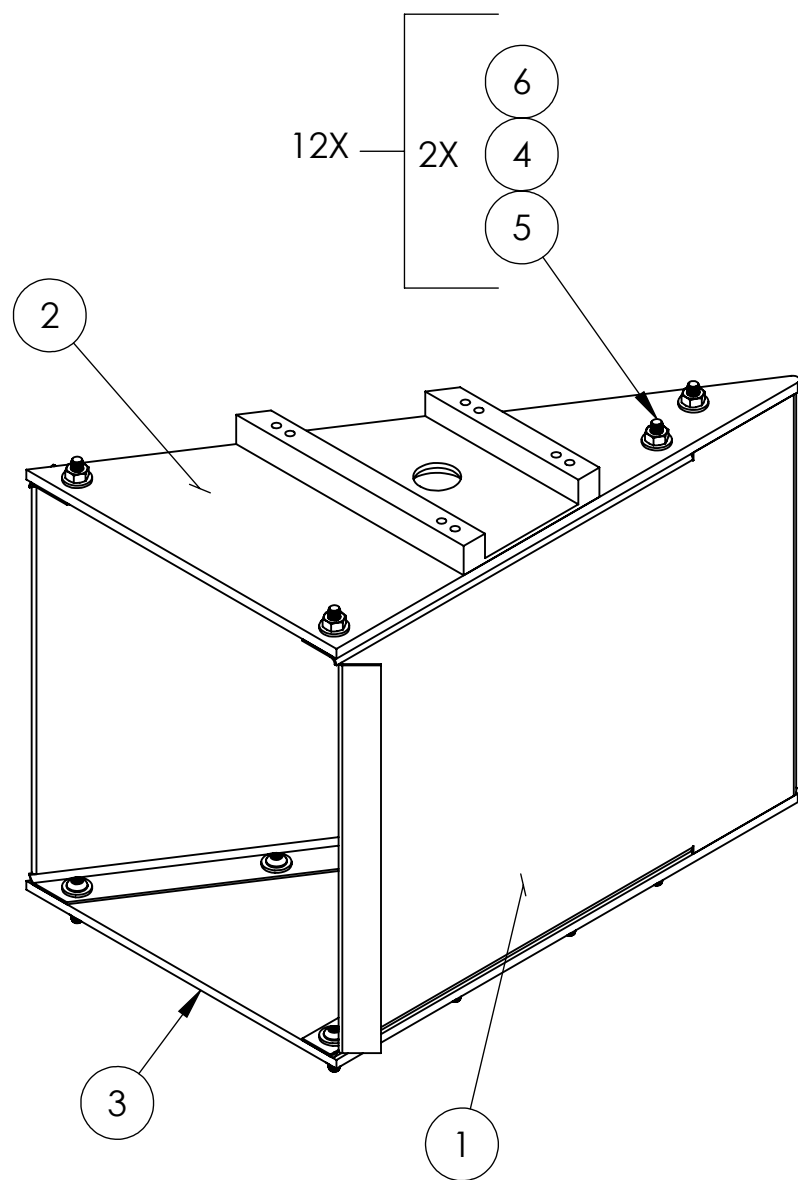


D1102105_αLIGO AOS SLC FOLD MIRROR BEAM DUMP BAFFLE ASSY, PART PDM REV: X-015, DRAWING PDM REV: X-011

NOTES CONTINUED:
6. APPROXIMATE WEIGHT = 9.262LBS.

REV.	DATE	DCN #	DRAWING TREE #
v1	01 NOV 2011	E1200051	-
-	-	-	-
-	-	-	-



ITEM NO.	PART NUMBER	DESCRIPTION	MATERIAL	QTY
7	D1200339	αLIGO ITM ELLIPTICAL BAFFLE BOX TOP SUPPORT BRACKET	6061-T6 Al	1
6	N-2520-A	UC-COMP, HEX NUT, .25-20	Ag-PLATED 300 SSSL	12
5	BU-2014-N	SCREW, BUTTON HD, SOCKET, 1/4-20 X .875 LG	18-8 SSSL	16
4	98019A355	WASHER FLAT, 1/4" MIL-15795-810	300 SSSL	28
3	D1003369	αLIGO AOS FOLD MIRROR BEAM DUMP BOTTOM CAP SKIN	6061-T6 Al	1
2	D1102106	αLIGO AOS FOLD MIRROR BEAM DUMP TOP CAP SKIN	6061-T6 Al	1
1	D1003368	αLIGO AOS FM BEAM DUMP SKIN	304 SSSL	1

PARTS LIST

NOTES AND TOLERANCES: (UNLESS OTHERWISE SPECIFIED)

DIMENSIONS ARE IN INCHES

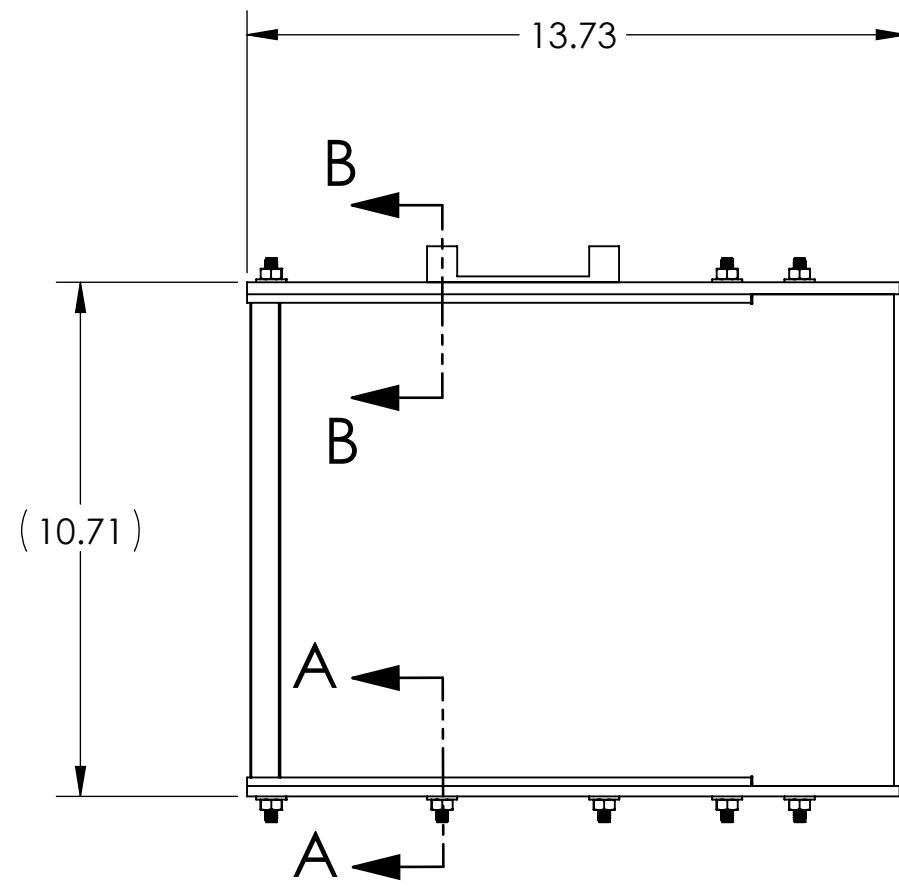
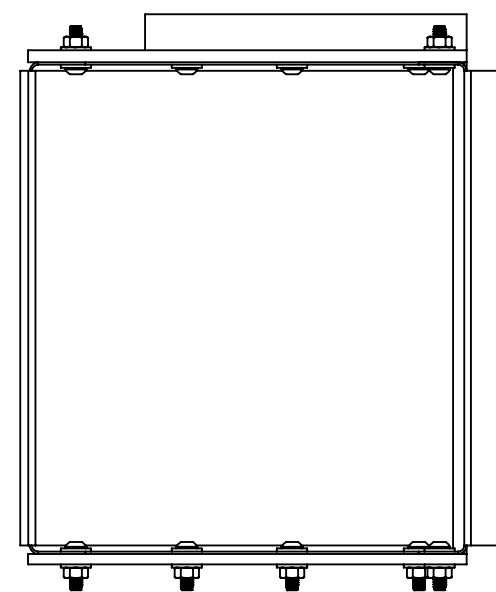
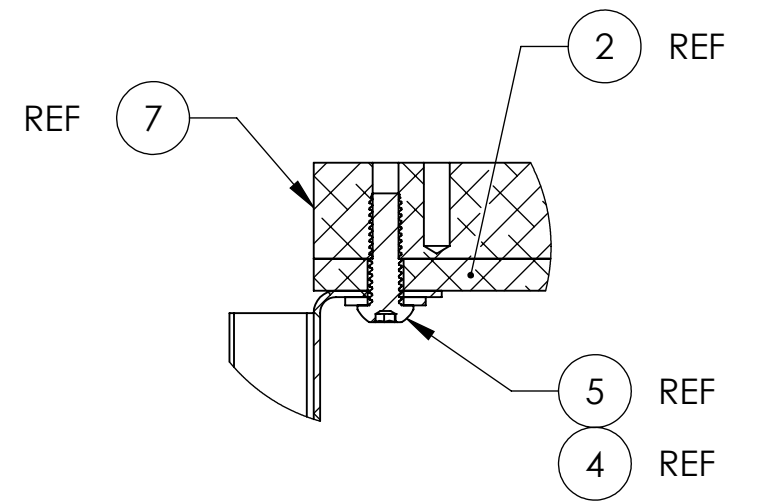
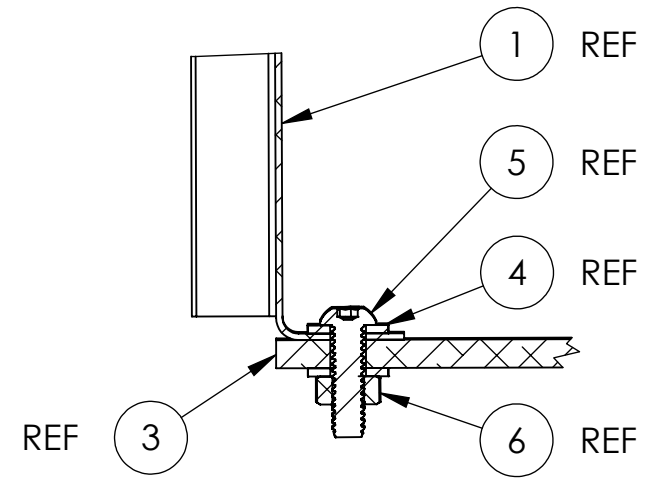
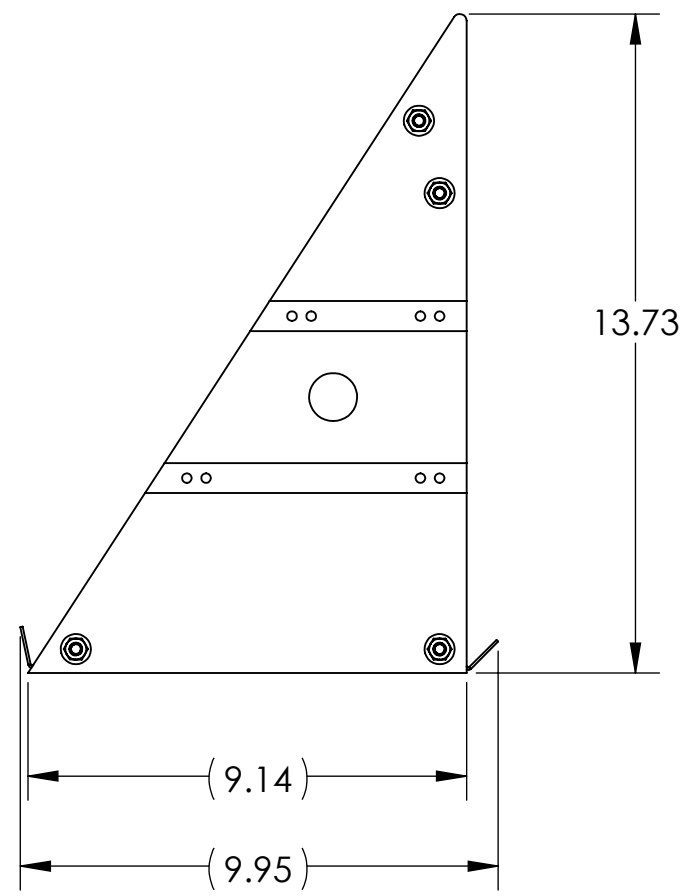
TOLERANCES:
.XX ± .02
.XXX ± .005
ANGULAR ± 1.0°

1. INTERPRET DRAWING PER ASME Y14.5-1994.
2. REMOVE ALL SHARP EDGES, .005-.015, FOR MACHINED PARTS. ROUND ALL EDGES APPROXIMATELY R.02 FOR SHEET METAL PARTS.
3. DO NOT SCALE FROM DRAWING.
4. ALL MACHINING FLUIDS MUST BE FULLY SYNTHETIC, FULLY WATER SOLUBLE AND FREE OF SULFUR, SILICONE, AND CHLORINE.

MATERIAL N/A FINISH N/A μinch

CALIFORNIA INSTITUTE OF TECHNOLOGY MASSACHUSETTS INSTITUTE OF TECHNOLOGY		PART NAME αLIGO AOS SLC FOLD MIRROR BEAM DUMP BAFFLE ASSY	
SYSTEM ADVANCED LIGO NEXT ASSY D0901058	SUB-SYSTEM AOS	DESIGNER J. TERRAZAS DRAFTER J. TERRAZAS 01 NOV 2011 CHECKER APPROVAL M. SMITH	SIZE DWG. NO. B D1102105 SCALE: 1:8 PROJECTION:
			REV. v1 SHEET 1 OF 2

D1102105_qLIGO AOS SLC FOLD MIRROR BEAM DUMP BAFFLE ASSY., PART PDM REV: X-015, DRAWING PDM REV: X-011



LIGO CALIFORNIA INSTITUTE OF TECHNOLOGY MASSACHUSETTS INSTITUTE OF TECHNOLOGY	
SIZE DWG. NO. B	D1102105
REV. v1	
SCALE: 1:8	PROJECTION: SHEET 2 OF 2