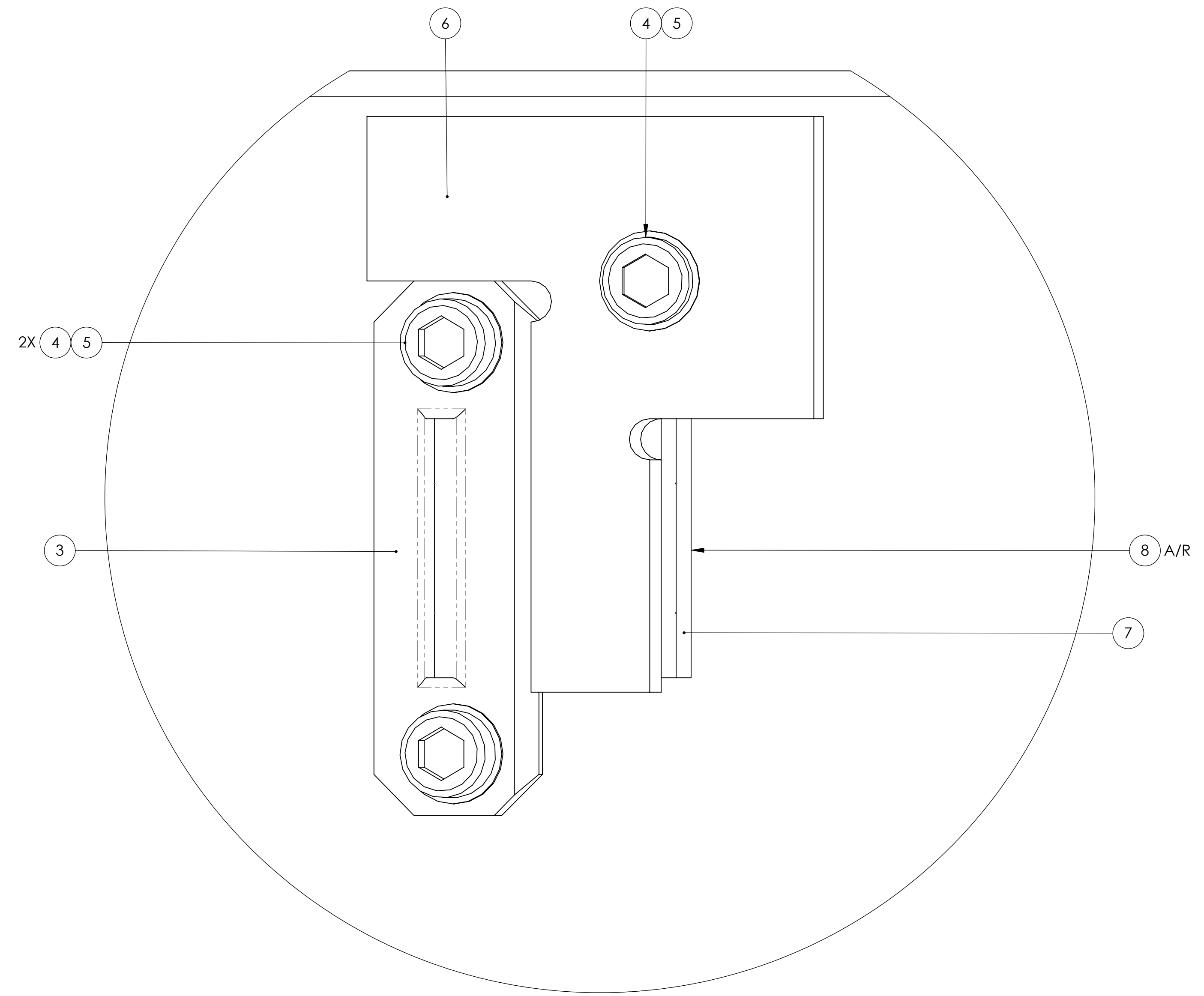
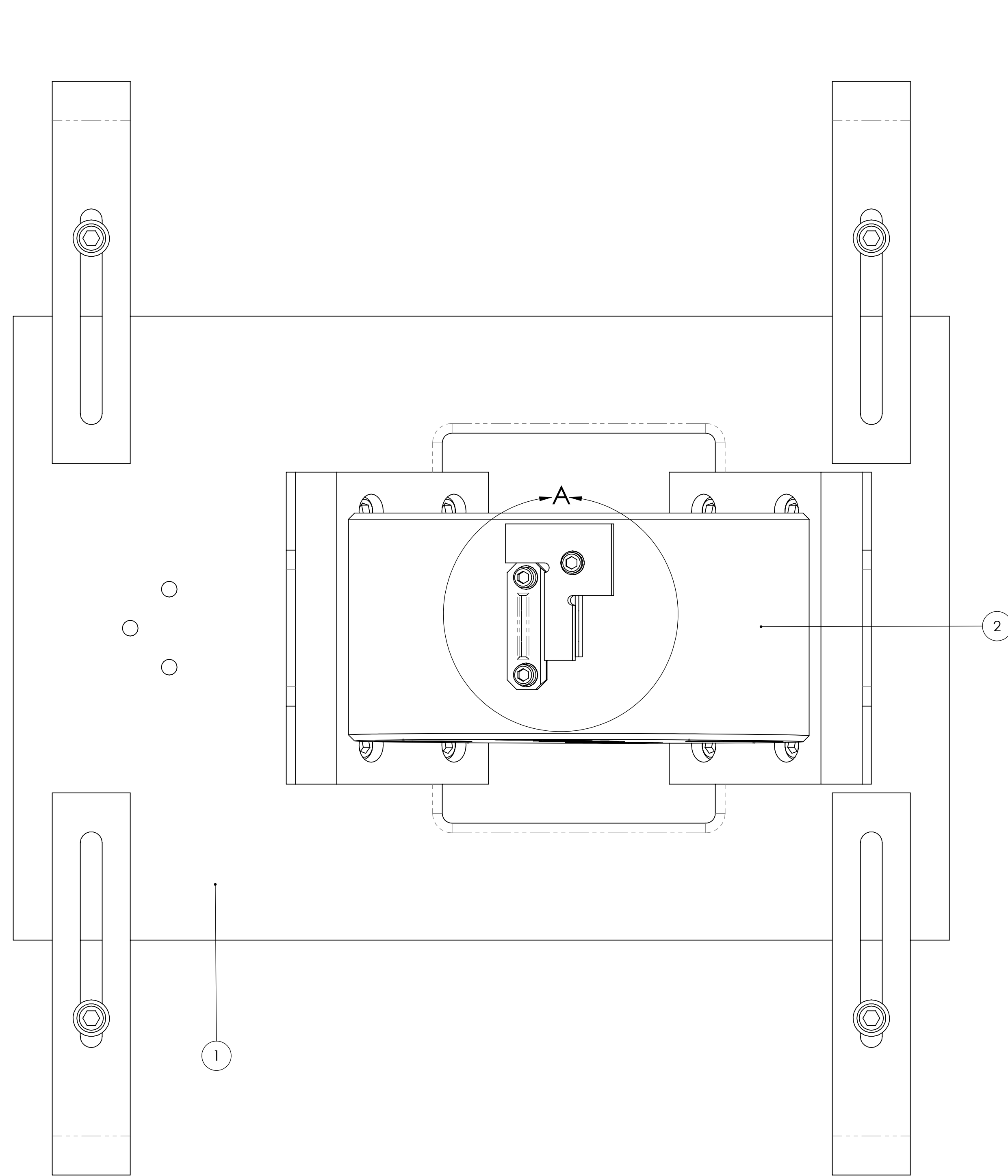


REV.	DATE	DCN #	DRAWING TREE #
v1	28 OCT 2011	E1101061	E1000035
-	-	-	-
-	-	-	-



DETAIL A
SCALE 4 : 1

ITEM NO.	PART NUMBER	DESCRIPTION	MATERIAL	REQ	SPARE	TOTAL
8	-	UHV-COMPATIBLE ADHESIVE (MASTERBOND EP30-2 OR EQUIVALENT)	-	A/R	0	0
7	D0901278	HSTS SECONDARY METAL PRISM	304, 316 OR 302 SSSL	1	0	1
6	D1102100	SECONDARY PRISM PLACEMENT FIXTURE, METAL BOTTOM MASS	6061-T6 Al	1	0	1
5	-	WASHER, FLAT, #8 (NAS 620-C8L OR EQUIVALENT)	300 SSSL	3	1	4
4	-	SCREW, SOCKET HEAD CAP, #8-32 UNC-2A X 0.375 LONG	300 SSSL	3	1	4
3	D0901790	PRIMARY METAL BREAKOFF PRISM, HSTS	304, 316 OR 302 SSSL	1	0	1
2	D020234 OR D0902332	METAL LOWER MASS (MC), HSTS OR METAL LOWER MASS (PR/SR), HSTS	6061-T6 Al	1	0	1
1	D0902658	OPTIC HOLDER, HAM TRIPLE SUS.	N/A	1	0	1

NOTES AND TOLERANCES: (UNLESS OTHERWISE SPECIFIED)



PART NAME
SECONDARY PRISM PLACEMENT FIXTURE ARRANGEMENT, METAL BOTTOM MASS

MATERIAL
N/A

FINISH
N/A μinch HSTS OVERALL ASSY AND FIXTURES

SYSTEM	ADVANCED LIGO	SUB-SYSTEM	SUS	DESIGNER	D. BRIDGES	31 OCT 2011	SIZE	D	DWG. NO.	D1102101	REV.	v1
DRAFTER	D. BRIDGES	CHECKER	B. MOORE	APPROVAL			SCALE:	1:1	PROJECTION:		SHEET 1 OF 1	

D:\102101_Advanced\UCO_305_HSTS_Secondary_Prism_Placement_Fixture_Arrangement_Metal_Bottom_Mass_PRT_PDM_REV1.DWG PDM REV1