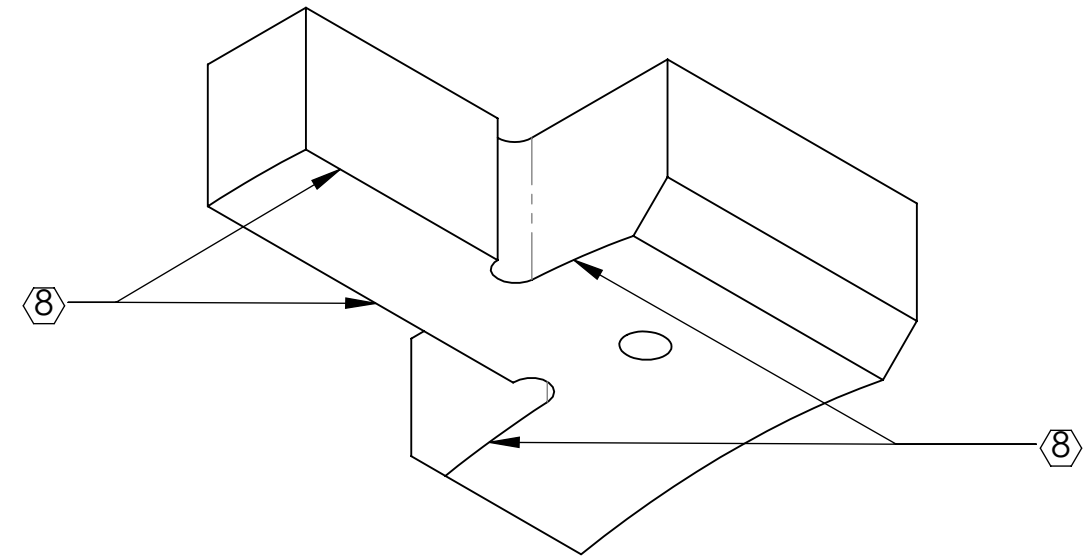
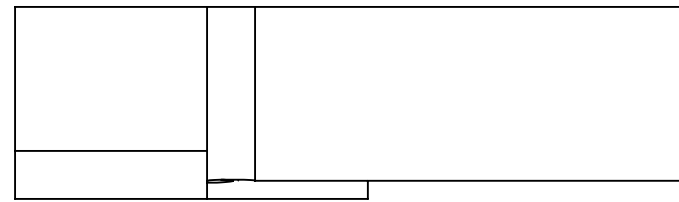
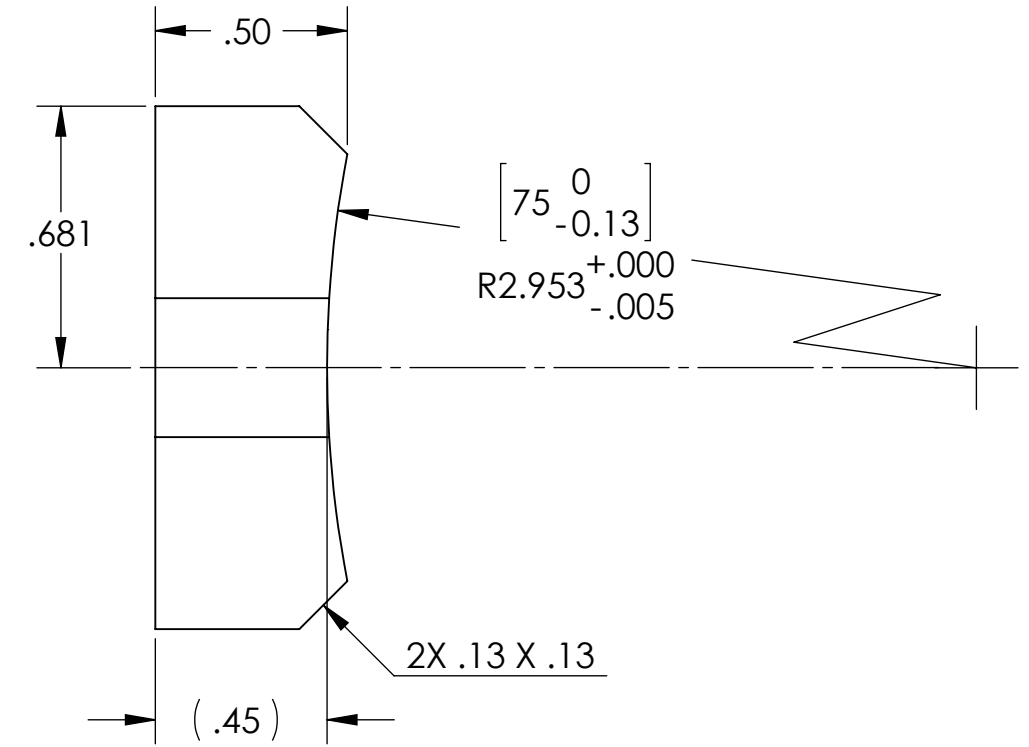
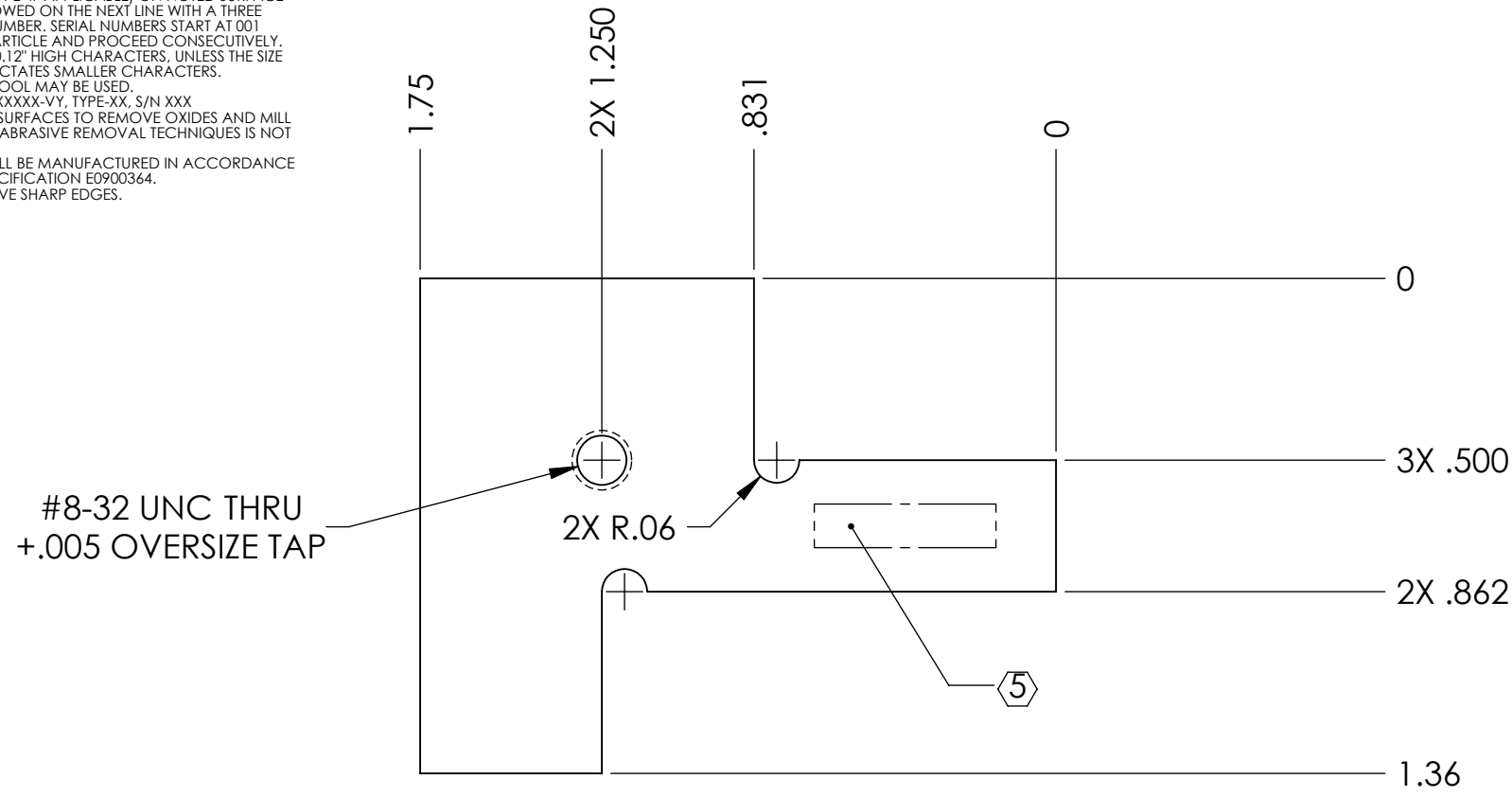


D1102100\_Advanced\_LIGO\_SUS\_HSTS\_Metal\_Bottom\_Mass\_Secondary\_Prism\_Placement\_Fixture, PART PDM REV: X-001, DRAWING PDM REV:

**NOTES CONTINUED:**  
 5. SCRIBE, ENGRAVE, OR MECHANICALLY STAMP (NO INKS OR DYES) DRAWING PART NUMBER, REVISION (AND VARIANT OR "TYPE" IF APPLICABLE) ON NOTED SURFACE OF PART FOLLOWED ON THE NEXT LINE WITH A THREE DIGIT SERIAL NUMBER. SERIAL NUMBERS START AT 001 FOR THE FIRST ARTICLE AND PROCEED CONSECUTIVELY. USE MINIMUM 0.12" HIGH CHARACTERS, UNLESS THE SIZE OF THE PART DICTATES SMALLER CHARACTERS. A VIBRATORY TOOL MAY BE USED.  
 EXAMPLE: DXXXXXX-VY, TYPE-XX, S/N XXX  
 6. MACHINE ALL SURFACES TO REMOVE OXIDES AND MILL FINISH. USE OF ABRASIVE REMOVAL TECHNIQUES IS NOT ALLOWED.  
 7. ALL PARTS SHALL BE MANUFACTURED IN ACCORDANCE WITH LIGO SPECIFICATION E0900364.  
 8. DO NOT REMOVE SHARP EDGES.

REV.	DATE	DCN #	DRAWING TREE #
v1	28 OCT 2011	E1101061	E1000035
-	-	-	-
-	-	-	-



NOTES AND TOLERANCES: (UNLESS OTHERWISE SPECIFIED)				LIGO CALIFORNIA INSTITUTE OF TECHNOLOGY MASSACHUSETTS INSTITUTE OF TECHNOLOGY		PART NAME	
DIMENSIONS ARE IN INCHES [MM]				ADVANCED LIGO		SECONDARY PRISM PLACEMENT FIXTURE, METAL BOTTOM MASS	
TOLERANCES: .XX ± .01 .XXX ± .005				SUB-SYSTEM		DESIGNER D. BRIDGES 31 OCT 2011	
ANGULAR ± 0.5°				NEXT ASSY		DRAFTER D. BRIDGES 31 OCT 2011	
MATERIAL 6061-T6 Al				HSTS OVERALL ASSY AND FIXTURES		CHECKER B. MOORE 01 NOV 2011	
FINISH 63 μinch				APPROVAL		SIZE DWG. NO. B D1102100	
						REV. v1	
						SCALE: 2:1 PROJECTION: SHEET 1 OF 1	