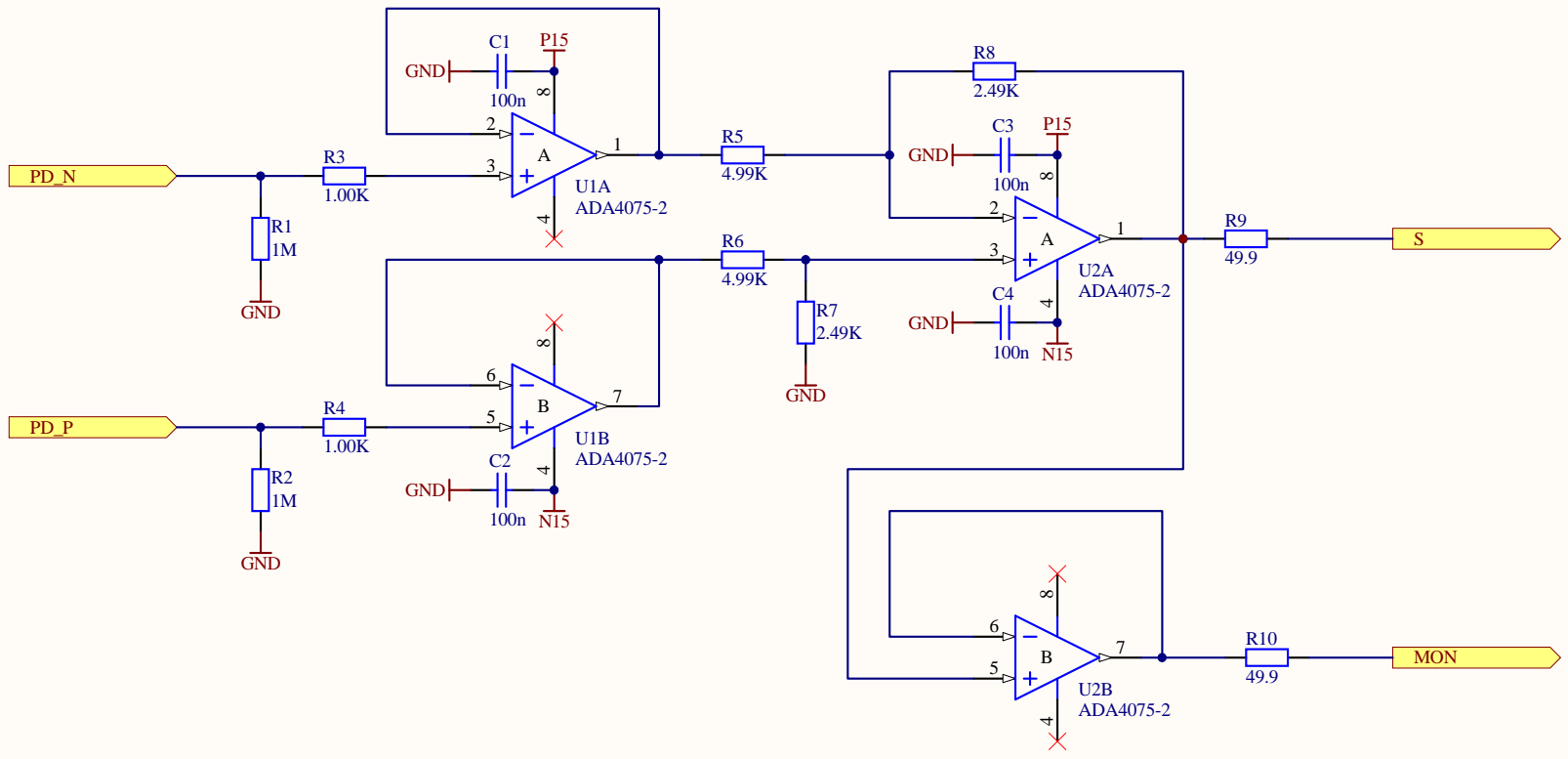


The DC photodiode signals are chained through with 2 DB9 connectors. The 4 BNC connectors are monitors.

The board to board spacing is 3.200".
 The actual board width is 3.160".
 The board height is 5.300".
 The cut-out for the DIN connector starts 1.300" back.
 The cut-out is 0.147" deep.
 The board is placed a 0.000" behind the front panel.

Title			Quad Photodiode Breakout		
Size	Number	Revision			
A	D1102075	1			
Date:	11/14/2011	Sheet 1 of 2			
File:	C:\Users\...\BreakoutQuadPD1.SchDoc	Drawn By:		Daniel Sigg	



Title		
Quad Photodiode Breakout		
Size	Number	Revision
A	D1102075	1
Date:	11/14/2011	Sheet2 of 2
File:	C:\Users\...\BreakoutQuadPD2.SchDoc	Drawn By: Daniel Sigg