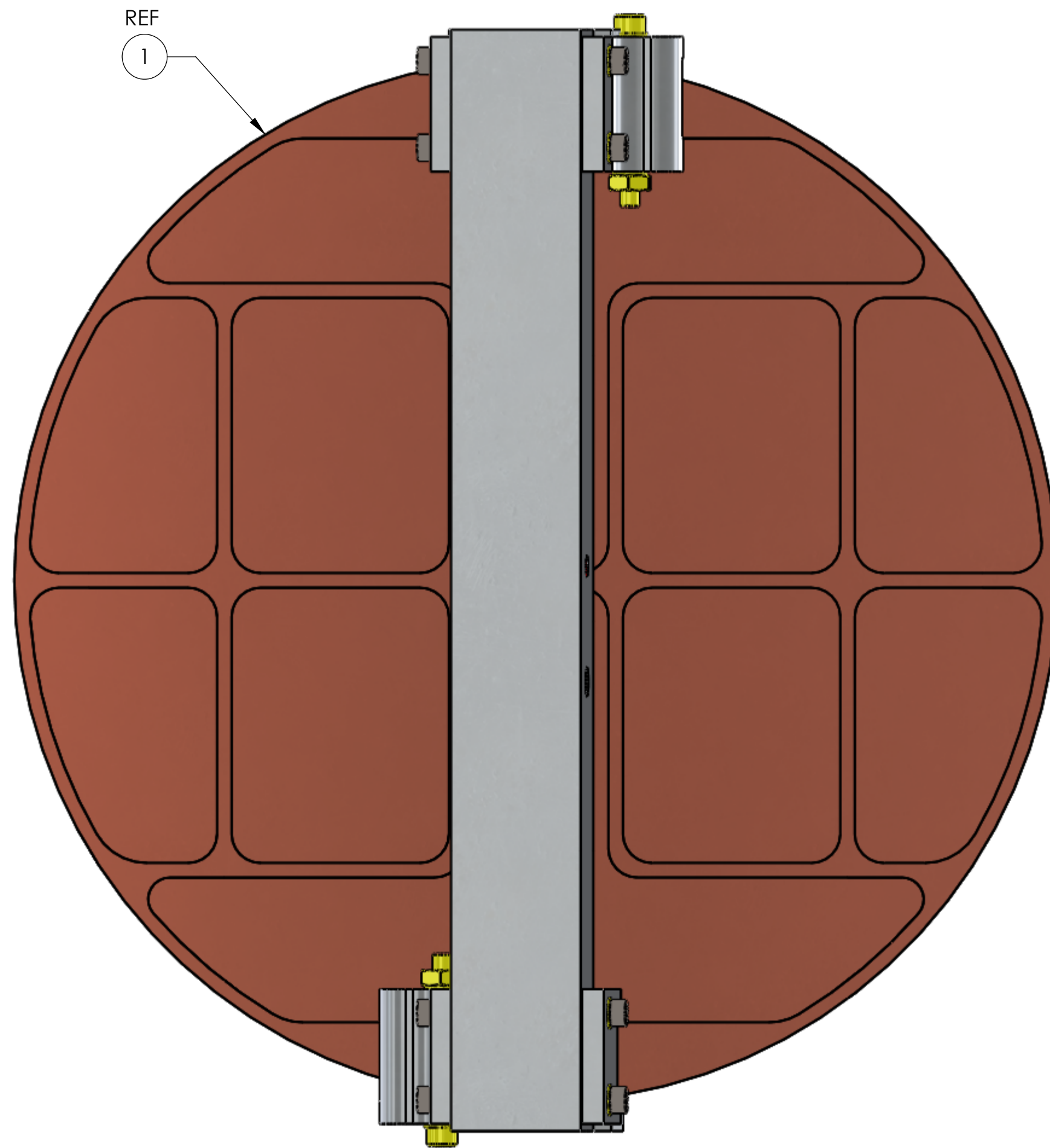
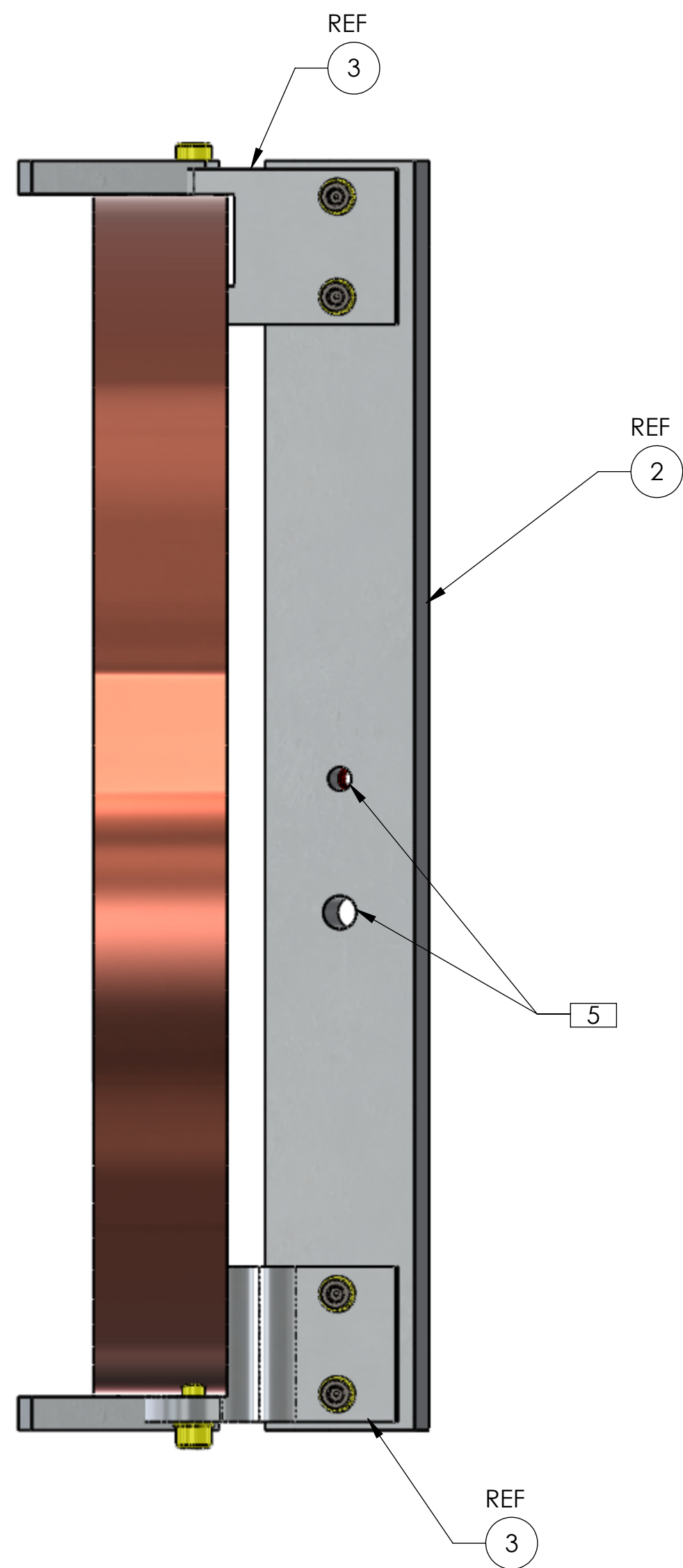
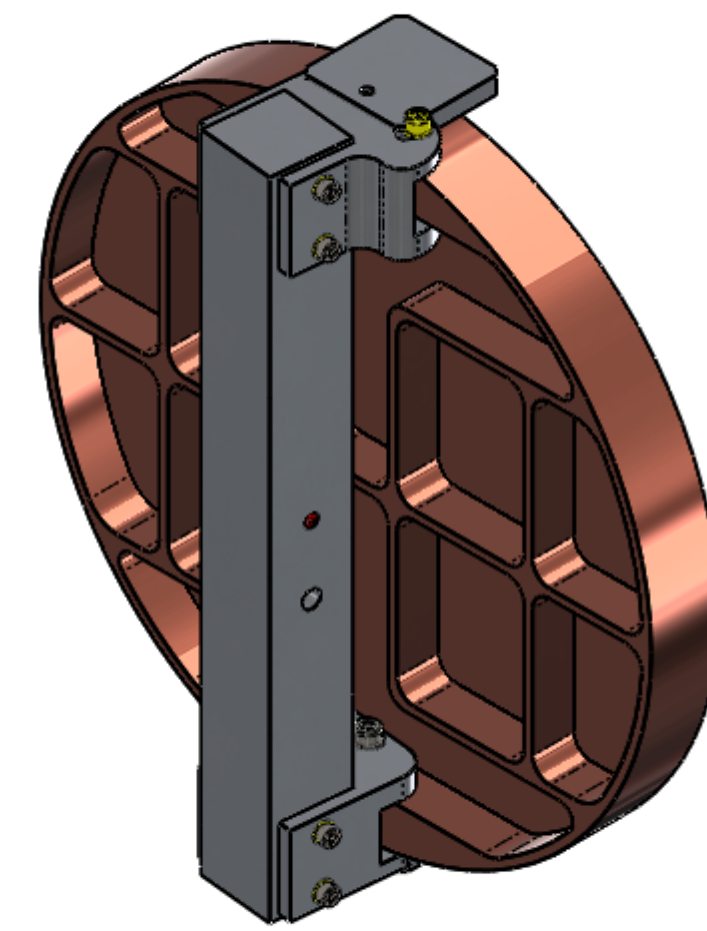
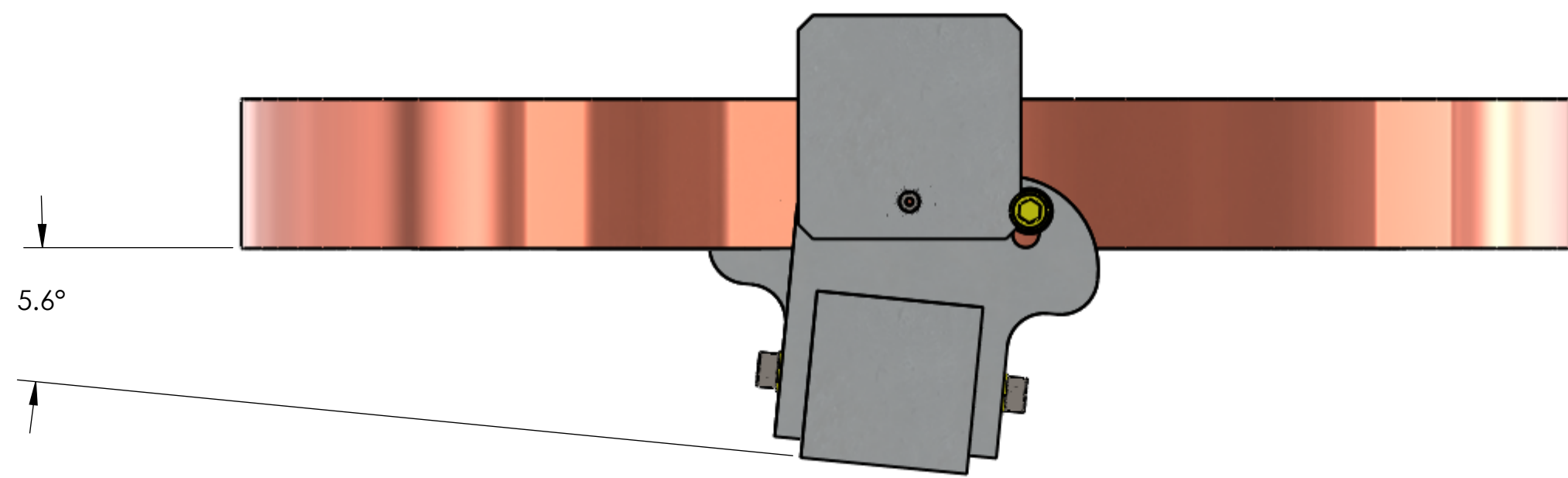
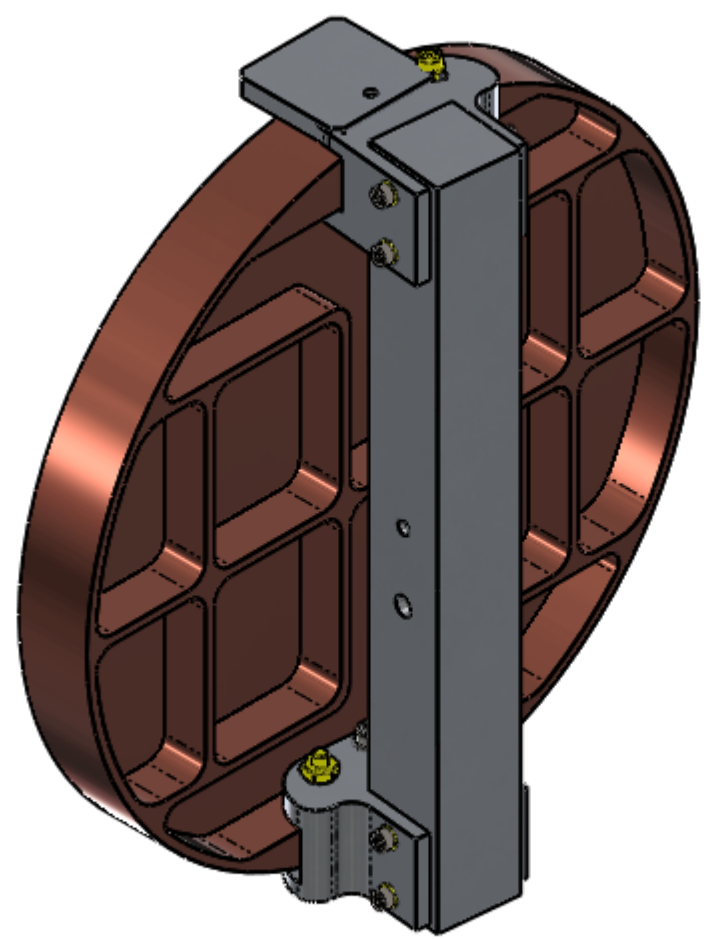


- NOTES CONTINUED:
- 5 INTERFACE TO ASSEMBLY D1102088
 - 6 #6-32 TORQUE TO 10 in-lb, MAX.
 - 7 #8-32 TORQUE TO 20 in-lb, MAX.
 - 8 ITEMS 11 THRU 16 ARE NOT USED IN ULTRA HIGH VACUUM THESE ARE TO BE REMOVED FROM THE BSC CHAMBER AFTER ALL OTHER BSC ITEMS ARE INSTALLED

TYPE	CONFIGURATION DESCRIPTION
-01	DEFAULT ASSEMBLY (SHEETS 1 & 2)
-02	MIRROR CLEANING & HANDLING (SHEET 3)
-03	AIR BAKING (SHEET 4)

REV.	DATE	DCN #	DRAWING TREE #
v1	08-MAR-12	E1101043-v1	E1101044-v1
v2	21-MAY-12	E1101043-v2	E1101044-v2
v3	09-NOV-2012	E1200972	E1200917-v2



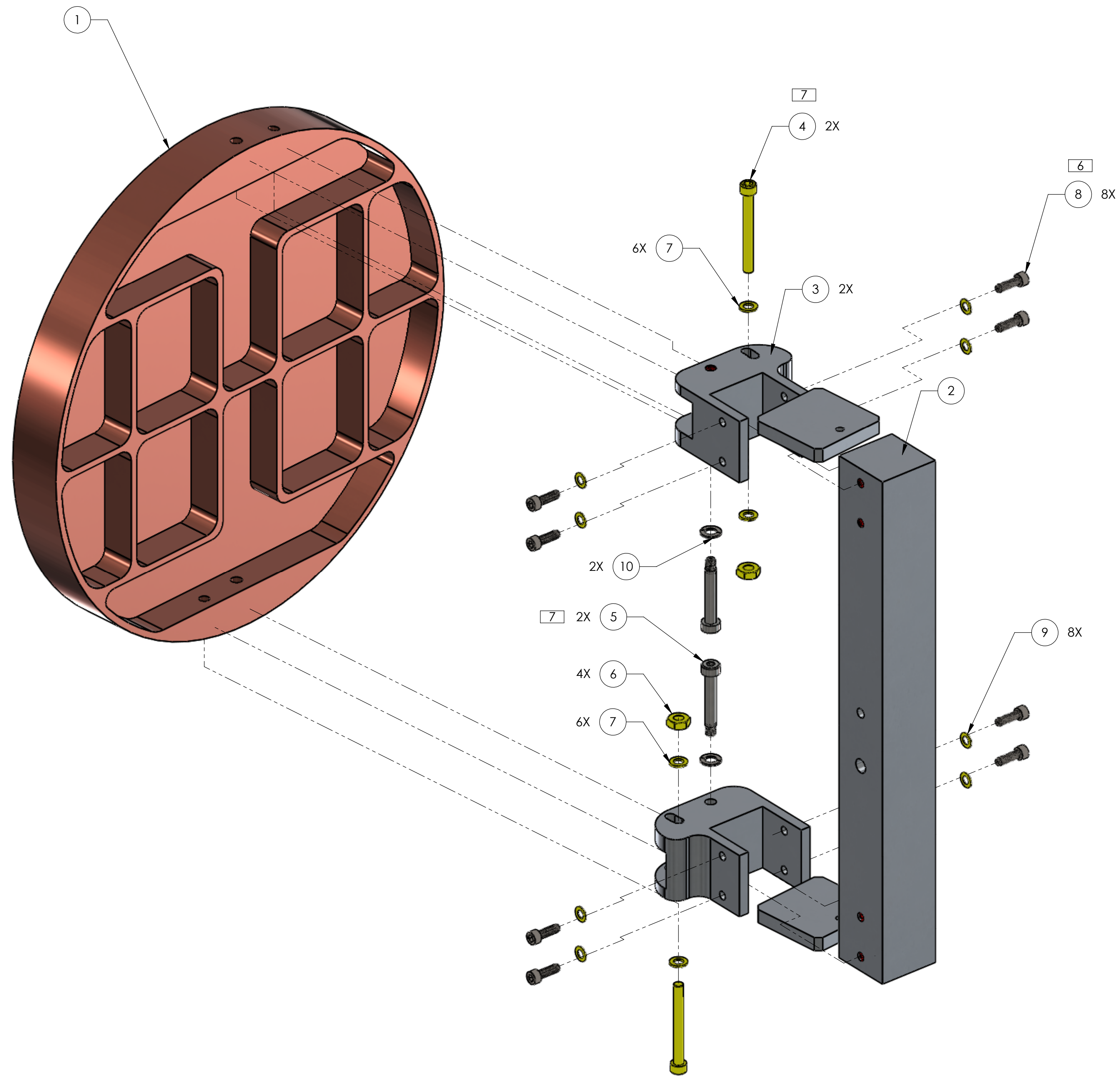
TYPE -01

16	D1201442	AIR BAKE FIXTURE, SM1	6061 Alloy	2	0	2
15	D1200756	TCS H1-L1 SM1 SPLASH COVER	TEFLON PFA 440-HP OR 450	1	0	1
14	WF-06	FLAT WASHER, #6, .143ID X .270 OD X .106 THK, UC-COMPONENTS	18-8 SS	2	2	4
13	C-614-N	SHCS 6-32 X .875 LONG, UC-COMPONENTS	18-8 SS	2	2	4
12	D1200754	HANDLE GUSSET, αLIGO TCS STEERING MIRROR 1, H1-L1	Al 6061	2	0	2
11	D1200755	HANDLE, αLIGO TCS STEERING MIRROR 1, H1-L1	316 SSTL	1	0	1
10	WFV-10	WASHER, VENTED FLAT, #10, .195 ID X .35 4OD X .032 TK. UC-COMPONENTS	18-8 SS	2	1	3
9	WF-06-A	WASHER, FLAT, #6, .143ID X .267OD X .016TK. UC-COMPONENTS	300 SS, Au PLATED	8	2	10
8	C-607	SSH, 6-32 X UNC-3A X 7/16 Lg SS. UC-COMPONENTS	Alloy Steel (SS)	8	2	10
7	WF-08	WASHER, FLAT, #8, .169ID X .304OD X .032TK, UC-COMPONENTS	300 SSTL	6	2	8
6	N-832-A	HEX NUT, #8-32	300 SSTL, Au PLATED	4	2	6
5	SHCV-4423	SSHD, #8-32UNC-3A X 1 LG, VENTED. UC-COMPONENTS	303 SSTL	2	1	3
4	C-824-NA	SCREW, SOCKET HEAD CAP, #8-32 UNC-2A X 1.5LG. UC-COMPONENTS	300 SSTL	2	2	4
3	D1101294	H1-L1 STEER M1 AZ BRACKET	6061 Alloy	2	0	0
2	D1101295	H1-L1 STEER M1 SUPPORT	6061 Alloy	1	0	0
1	D1101014	αLIGO TCS CO2P STEERING MIRROR 1, H1-L1	Copper	1	0	0
ITEM NO.	PART NUMBER	DESCRIPTION	MATERIAL	Default /REQ	SPARE	TOTAL

PARTS LIST

NOTES AND TOLERANCES: (UNLESS OTHERWISE SPECIFIED)	
1. INTERPRET DRAWING PER ASME Y14.5-1994.	
2. REMOVE ALL SHARP EDGES, .005-.015, FOR MACHINED PARTS. ROUND ALL EDGES APPROXIMATELY R.02 FOR SHEET METAL PARTS.	
3. DO NOT SCALE FROM DRAWING.	
4. ALL MACHINING FLUIDS MUST BE FULLY SYNTHETIC, FULLY WATER SOLUBLE AND FREE OF SULFUR, SILICONE, AND CHLORINE.	
DIMENSIONS ARE IN INCHES	
TOLERANCES:	
.XX ± .01	
.XXX ± .005	
ANGULAR ± 1.0°	
MATERIAL	N/A
FINISH	N/A μinch

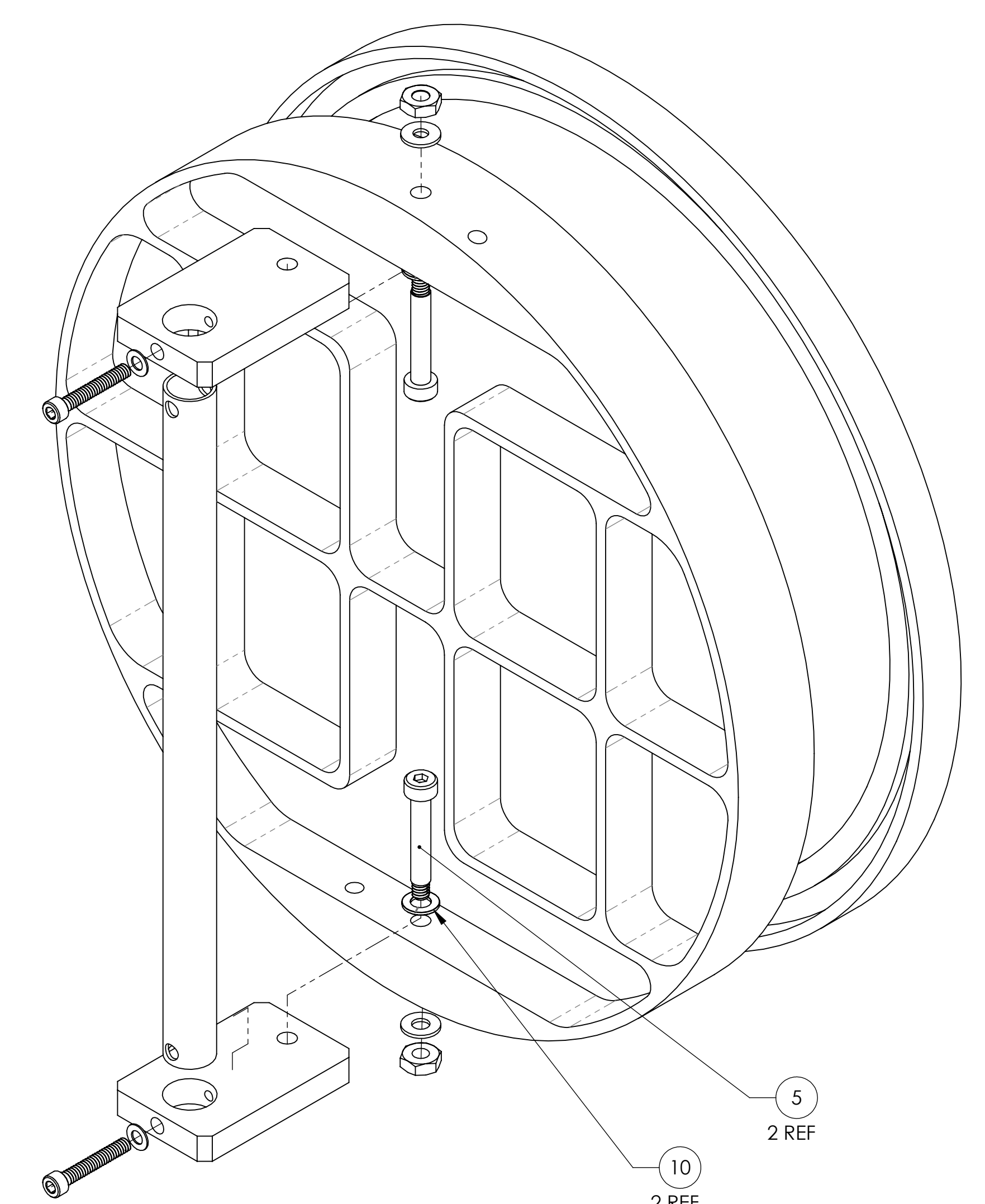
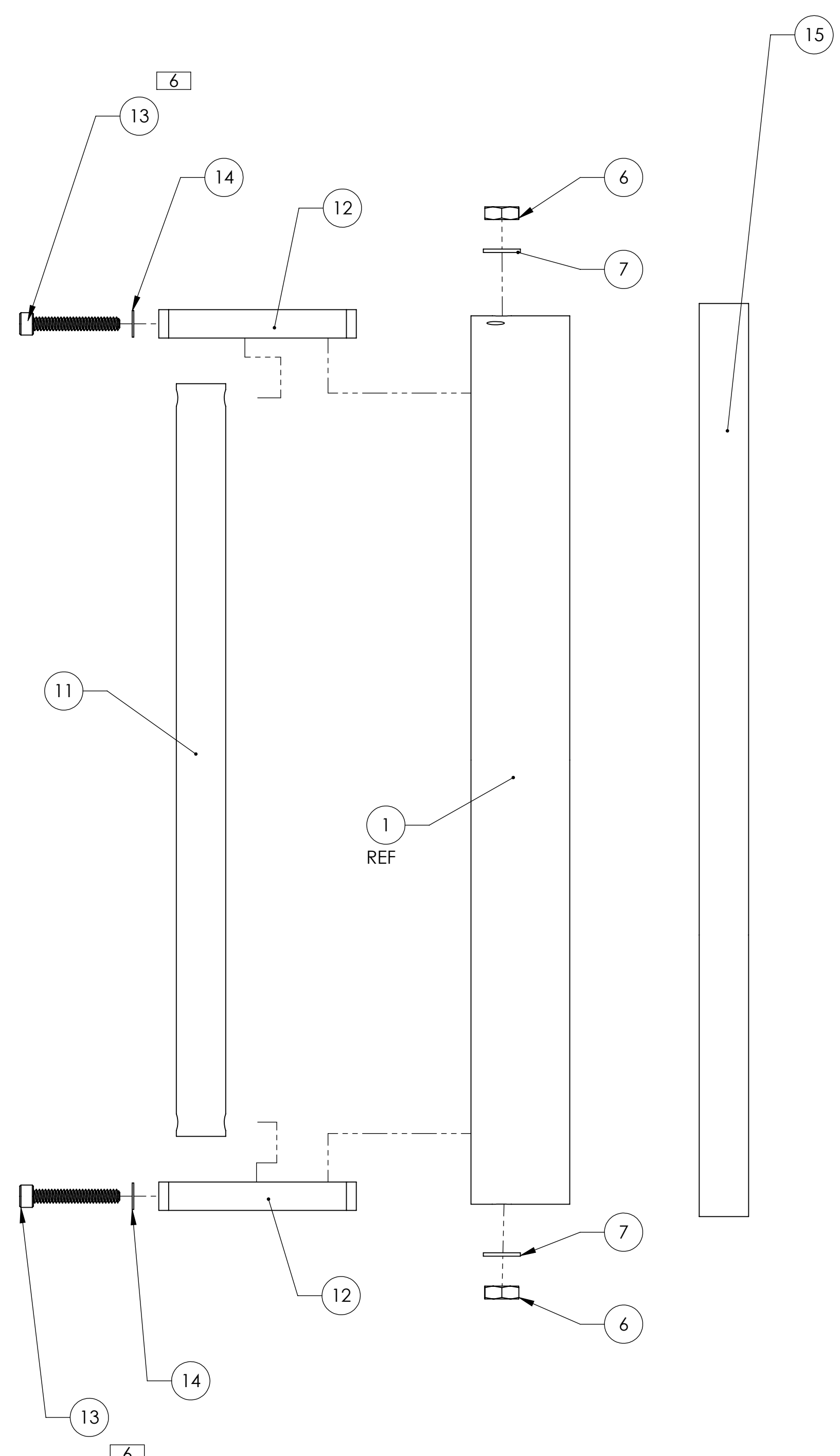
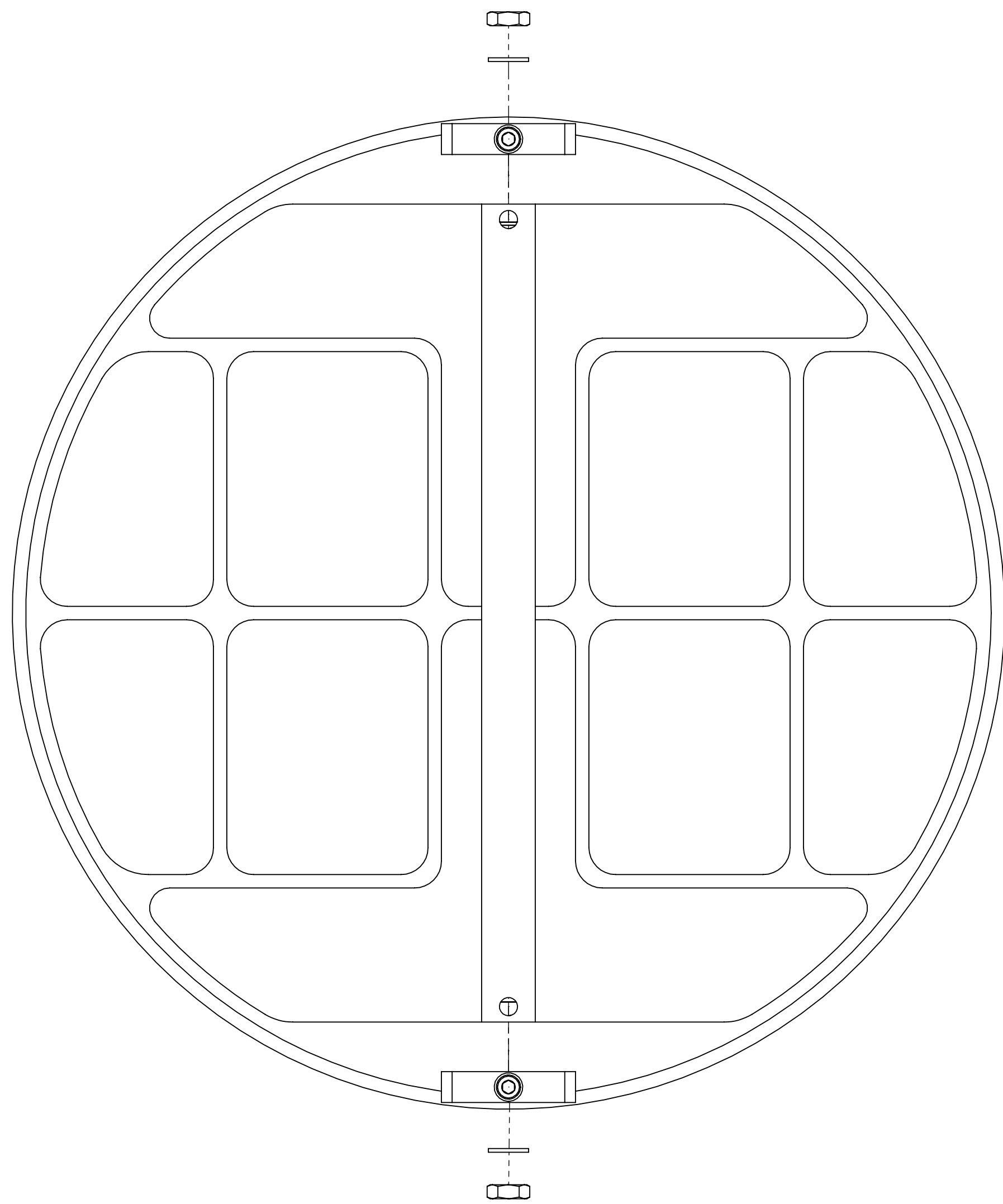
LIGO CALIFORNIA INSTITUTE OF TECHNOLOGY MASSACHUSETTS INSTITUTE OF TECHNOLOGY		PART NAME	
ADVANCED LIGO		αLIGO TCS MIRROR ASSY	
DESIGNER	M. JACOBSON	18-OCT-2011	SIZE DWG. NO.
DRAFTER	A. COLE	19-OCT-2011	D
CHECKER	C. GUIDO	02-NOV-2012	D1102029
APPROVAL	M. JACOBSON	09-NOV-2012	REV. v3
SCALE: 1:8		PROJECTION:	
		SHEET 1 OF 4	



**TYPE -01
DEFAULT ASSEMBLY FOR OPERATIONS**

CALIFORNIA INSTITUTE OF TECHNOLOGY MASSACHUSETTS INSTITUTE OF TECHNOLOGY		REV.
SIZE	DWG. NO.	REV.
D	D1102029	v3
SCALE: 1:8	PROJECTION:	SHEET 2 OF 4

D:\102029_dwg\0101.dwg, PART PDM REV: X-045, DRAWING PDM REV: X-018



**TYPE -02
MIRROR CLEANING & HANDLING**

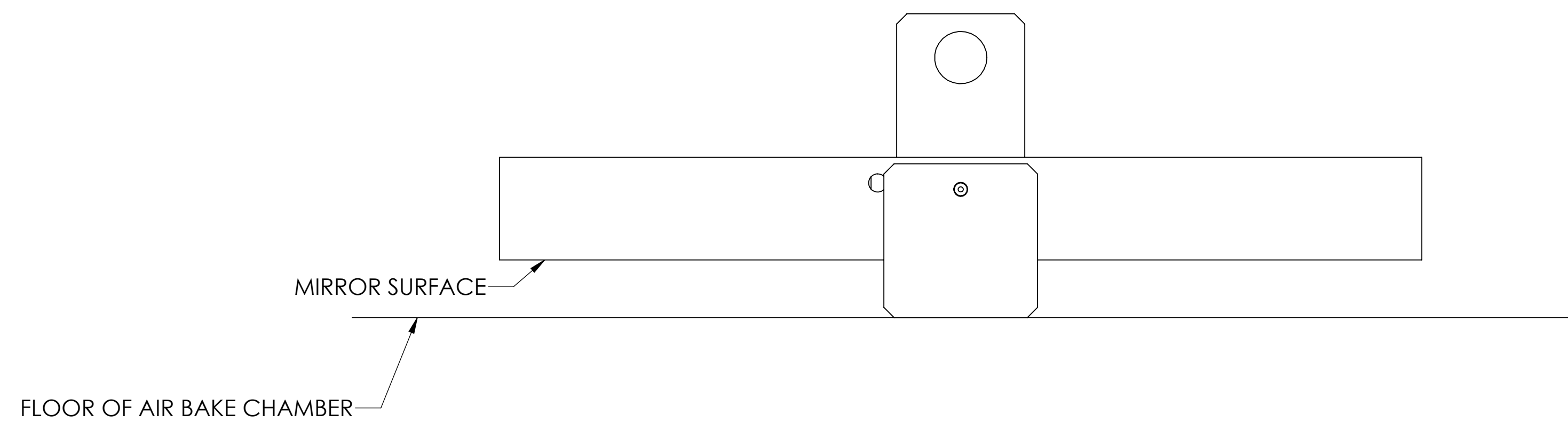
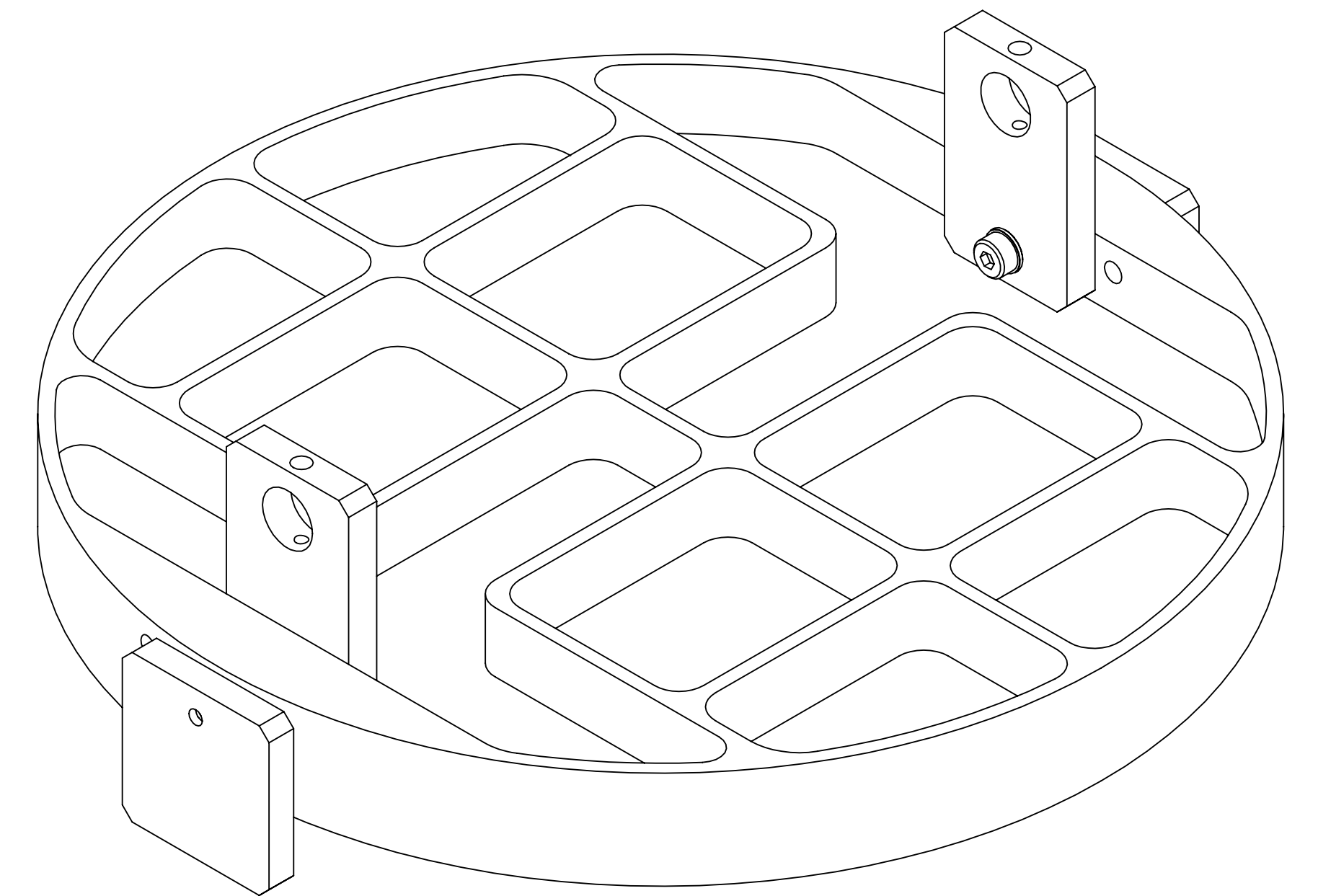
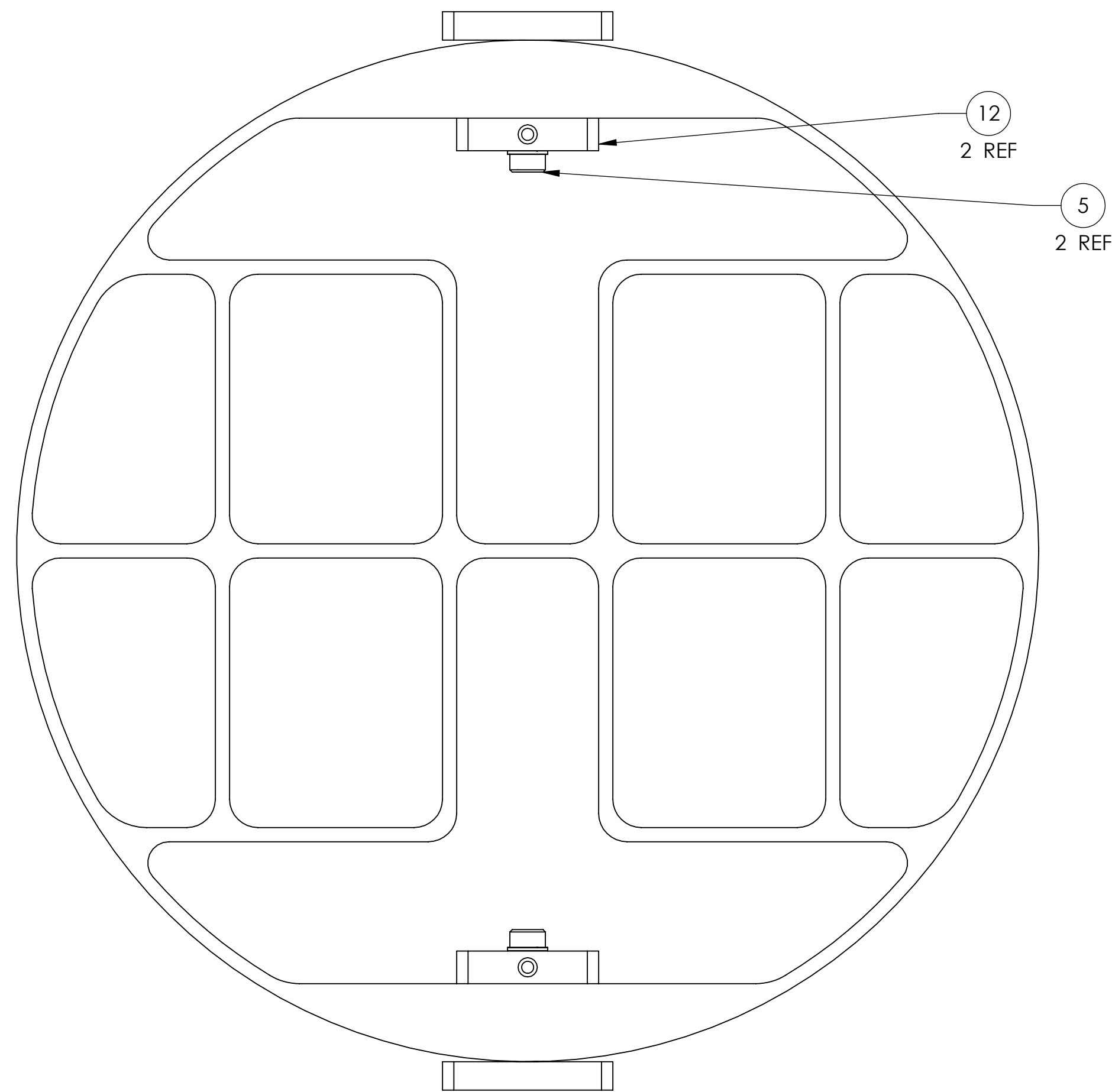
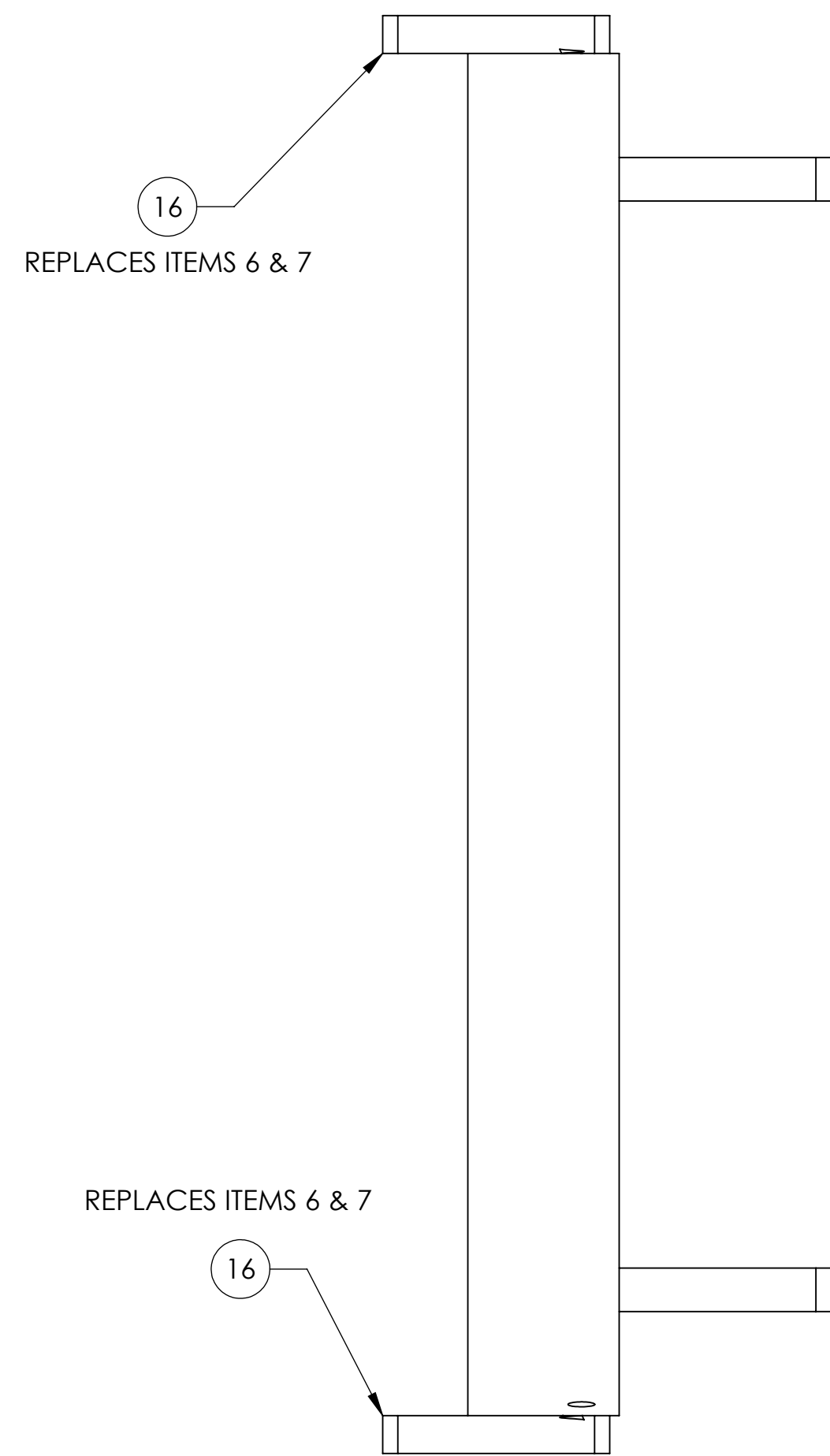
CALIFORNIA INSTITUTE OF TECHNOLOGY MASSACHUSETTS INSTITUTE OF TECHNOLOGY		REV.
SIZE	DWG. NO.	REV.
D	D1102029	v3
SCALE: 1:8	PROJECTION:	SHEET 3 OF 4

D1102029_01G0101CS_MIRROR_ASSY_PART_PDM_REV_X:046_DRAWING_PDM_REV_X:018

8 7 6 5 4 3 2 1

H
G
F
E
D
C
B
A

H
G
F
E
D
C
B
A



TYPE -03
AIR BAKING, SEE LIGO-T1200436

LIGO CALIFORNIA INSTITUTE OF TECHNOLOGY MASSACHUSETTS INSTITUTE OF TECHNOLOGY		REV.
SIZE	DWG. NO.	REV.
D	D1102029	v3
SCALE: 1:8	PROJECTION:	SHEET 4 OF 4

8 7 6 5 4 3 2 1

D:\102029_dwg\03.ctb, MIRROR_ASSY, PART PDM REV: X:045, DRAWING PDM REV: X:018