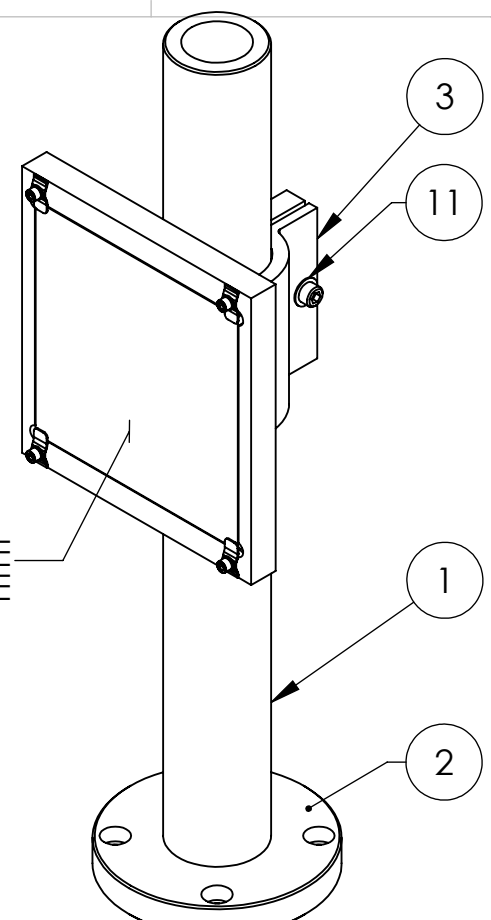
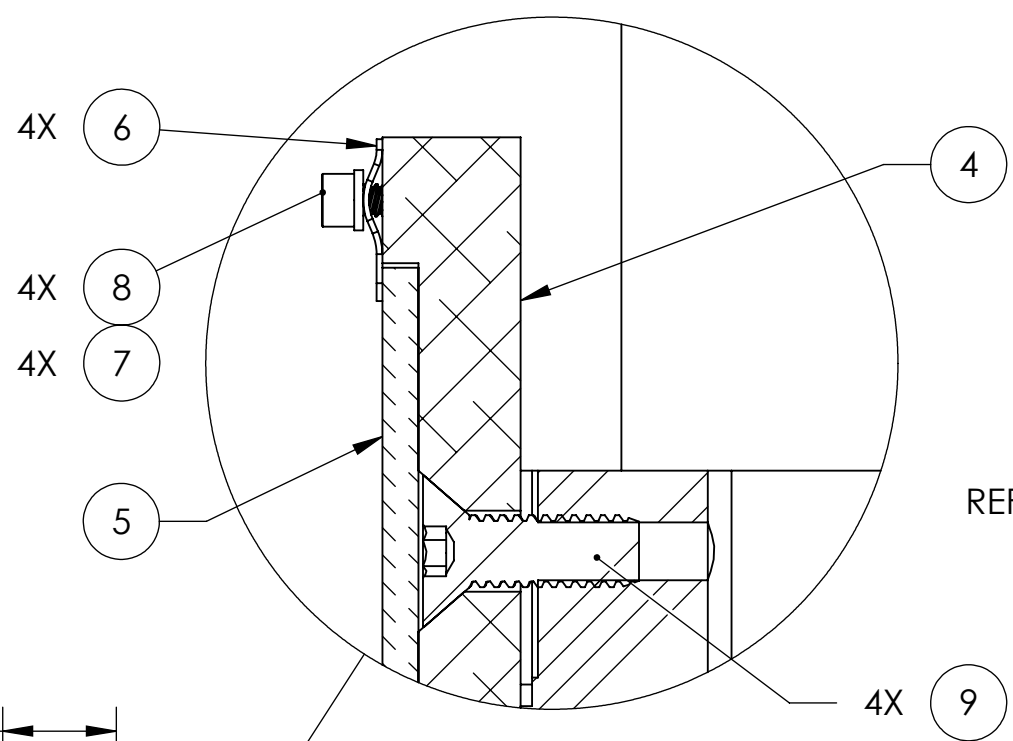
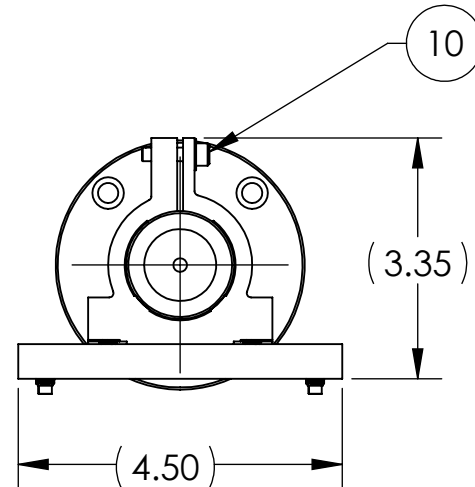


NOTES CONTINUED:

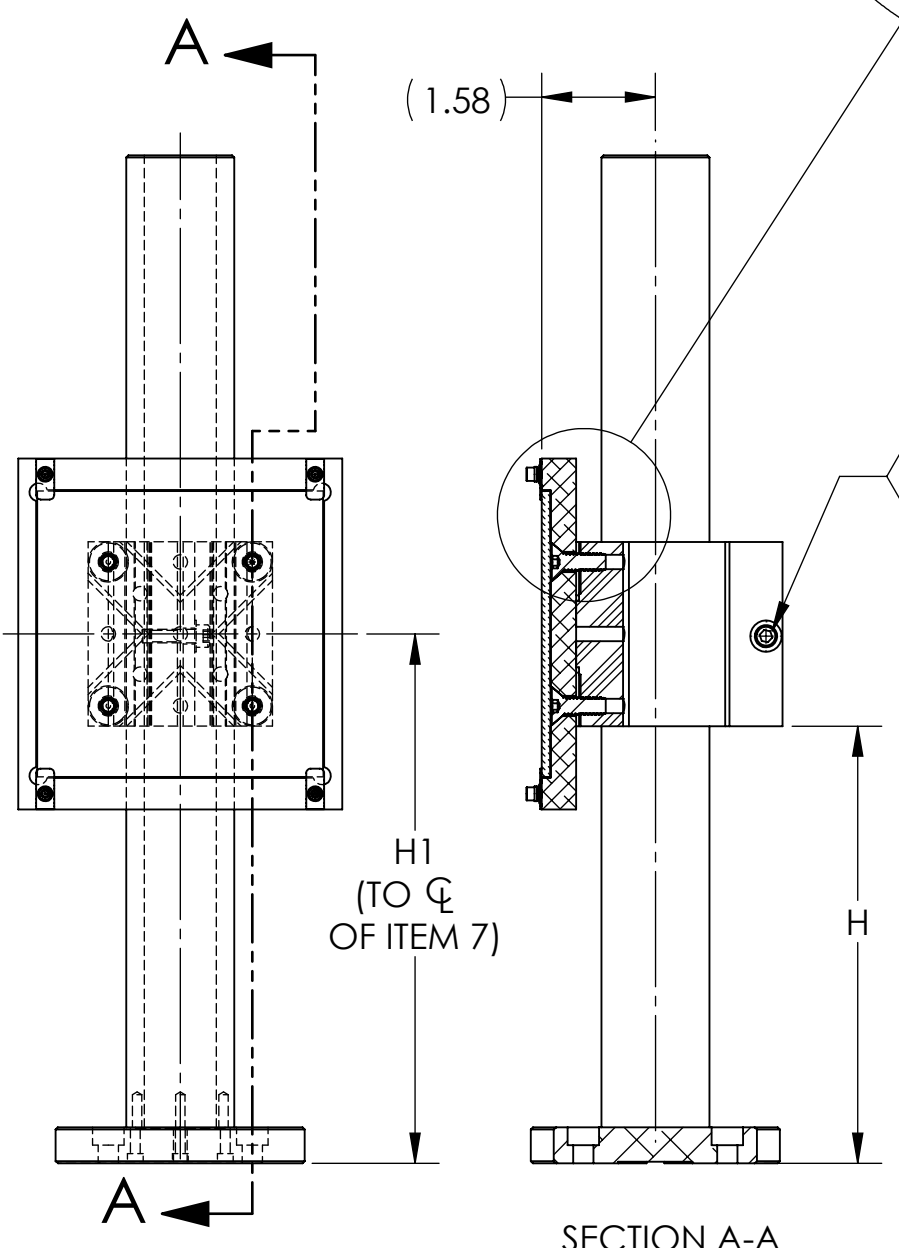
5. APPROXIMATE WEIGHT = 5.53LBS.

⑥ CLAMP LOCKING SCREW 3/16" HEX.  
SOCKET HEAD CAP SCREW SUPPLIED WITH ITEM ②



REV.	DATE	DCN #	BOM #
v1	23 NOV 2011	E1101197	E1101130
-	-	-	-
-	-	-	-

LOCATION	PART NO	H	H1
HAM 10-H2-SX1	D1102016-1	6.07	7.32
HAM 10-H2-SY1	D1102016-2	6.36	7.61
HAM 10-H2-SX2	D1102016-3	7.81	9.06
HAM 10-H2-SY2	D1102016-4	7.58	8.83
HAM 4-L1-SX1	D1102016-5	8.21	9.46
HAM 4-L1-SX2	D1102016-4	7.58	8.83
HAM 4-L1-SY1	D1102016-6	7.84	9.09
HAM 4-L1-SY2	D1102016-6	7.84	9.09
HAM 4-H1-SX1	D1102016-7	7.46	8.71
HAM 4-H1-SX2	D1102016-4	7.58	8.83
HAM 4-H1-SY1	D1102016-8	7.22	8.47
HAM 4-H1-SY2	D1102016-6	7.84	9.09



ITEM NO.	PART NUMBER	DESCRIPTION	MATERIAL	REQ	SPARE	TOTAL
11	WF-10	FLAT WASHER . . #10 SCREW SIZE	18-8 SSSL	1		1
10	C-1012-N	SCREW, SOCKET HEAD CAP, #10-32 UNF-2A X 0.75 LONG	18-8 SSSL	1		1
9	FA-2012-N	FLAT HEAD SOCKET CAP SCREW, 1/4"-20 THRD, 3/4" L	18-8 SSSL	4		4
8	MS 16995-10	SHCS, #4-40 X .375 LG	300 SSSL	4		4
7	NAS 620-C4	WASHER, FLAT, #4 X .21 OD X .03 THK	300 SSSL	4		4
6	D1001919	BEAM DUMP MOUNTING CLAMP	304 SSSL	4		4
5	D1102233	αLIGO AOS HAM FLAT BEAM DUMP, BLACK GLASS	Glass	1		1
4	D1102232	αLIGO AOS HAM FLAT BEAM DUMP GLASS MOUNT PLATE	6061-T6 Al	1		1
3	D990464-A	BRACKET, POST MIRROR MOUNT (OPTO SIGMA PN: 148-3410)	6005-T5	1		1
2	D990463-A	BASE, ETM ROD MOUNT, SHORT (OPTO SIGMA PN: 148-3320)	6061-T6 Al	1		1
1	D990452-A	ETM BEAM DUMP (ROD, ROD MOUNT SHORT)	304 SSSL	1		1

NOTES AND TOLERANCES: (UNLESS OTHERWISE SPECIFIED)

DIMENSIONS ARE IN INCHES

TOLERANCES:  
.XX ± .02  
.XXX ± .005

ANGULAR ± 1.0°

1. INTERPRET DRAWING PER ASME Y14.5-1994.  
2. REMOVE ALL SHARP EDGES, .005-.015, FOR MACHINED PARTS. ROUND ALL EDGES APPROXIMATELY R.02 FOR SHEET METAL PARTS.  
3. DO NOT SCALE FROM DRAWING.  
4. ALL MACHINING FLUIDS MUST BE FULLY SYNTHETIC, FULLY WATER SOLUBLE AND FREE OF SULFUR, SILICONE, AND CHLORINE.

MATERIAL: N/A μinch

**LIGO** CALIFORNIA INSTITUTE OF TECHNOLOGY  
MASSACHUSETTS INSTITUTE OF TECHNOLOGY

PART NAME: αLIGO AOS HAM FLAT BEAM DUMP ASSY

SYSTEM: ADVANCED LIGO SUB-SYSTEM: AOS

DESIGNER: J. TERRAZAS 16 NOV 2011  
DRAFTER: J. TERRAZAS 23 NOV 2011  
CHECKER: L. AUSTIN  
APPROVAL: M. SMITH

SIZE DWG. NO. B D1102016 REV. v1

SCALE: 1:4 PROJECTION: SHEET 1 OF 1

D1102016 αLIGO AOS HAM FLAT BEAM DUMP ASSY, PART PDM REV: X-036, DRAWING PDM REV: X-019