

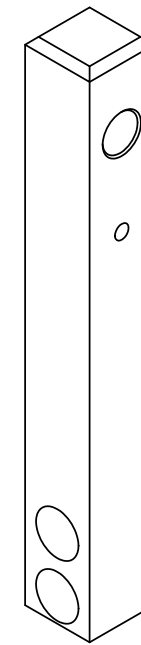
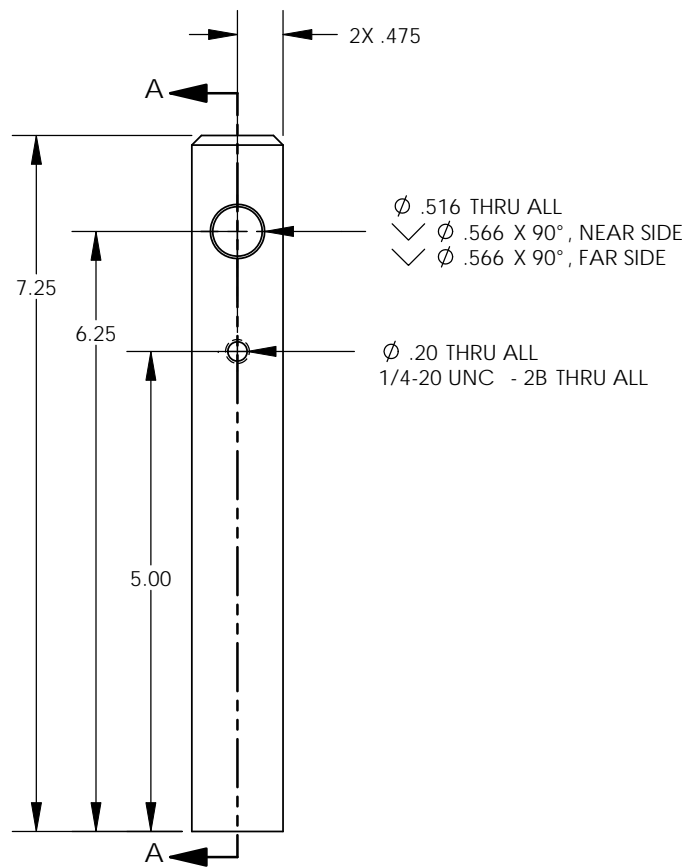
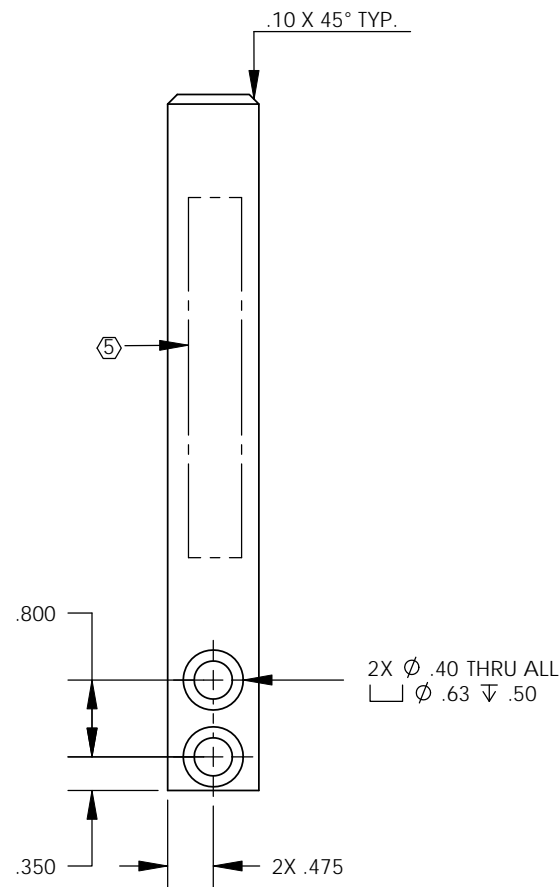
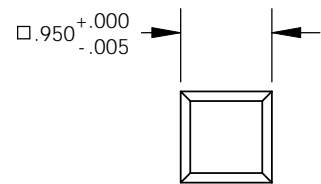
D1101932 aLIGO, AOS, VIEWPORT LEAK TEST FIXTURE, HORIZ. SUPPORT STRUT MT. STUDS, PART PDM REV. X-000, DRAWING PDM REV. X-000

NOTES CONTINUED:

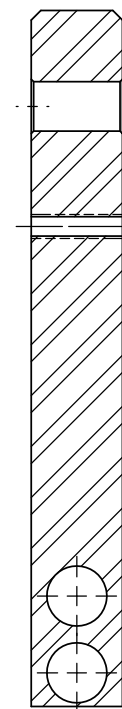
⑤ SCRIBE, ENGRAVE (A VIBRATORY TOOL MAY BE USED), LASER MARK OR MECHANICALLY STAMP (NO INKS OR DYES) DRAWING PART NUMBER, REVISION (AND VARIANT OR "TYPE" IF APPLICABLE) ON NOTED SURFACE OF PART FOLLOWED ON THE NEXT LINE WITH A THREE DIGIT SERIAL NUMBER. SERIAL NUMBERS START AT 001 FOR THE FIRST ARTICLE AND PROCEED CONSECUTIVELY. USE MINIMUM 0.12" HIGH CHARACTERS, UNLESS THE SIZE OF THE PART DICTATES SMALLER CHARACTERS. EXAMPLE: DXXXXXX-VY, TYPE-XX, S/N XXX

- 6. APPROXIMATE WEIGHT = 1.57 LB.
- 7. MACHINE ALL SURFACES TO REMOVE OXIDES AND MILL FINISH. USE OF ABRASIVE REMOVAL TECHNIQUES IS NOT ALLOWED. REFER TO LIGO-E0900364
- 8. ALL PARTS SHALL BE MANUFACTURED IN ACCORDANCE WITH LIGO SPECIFICATION E0900364.
- 11. ALL MATERIAL IS TO BE VIRGIN MATERIAL (i.e. NO WELD REPAIRS, PLUGS OR RECYCLED MATERIAL). NO REPAIRS SHALL BE MADE UNLESS APPROVED IN ADVANCE, AND IN WRITING, BY LIGO LABORATORY. REFER TO LIGO-E0900364.

REV.	DATE	DCN #	DRAWING TREE #
v1	11 OCT 2011	E1101031-x0	-
-	-	-	-
-	-	-	-



ISO VIEW



SECTION A-A

NOTES AND TOLERANCES: (UNLESS OTHERWISE SPECIFIED)				LIGO CALIFORNIA INSTITUTE OF TECHNOLOGY MASSACHUSETTS INSTITUTE OF TECHNOLOGY		PART NAME	
DIMENSIONS ARE IN INCHES				ADVANCED LIGO		ALIGO, AOS, VIEWPORT LEAK TEST FIXTURE, HORIZ. SUPPORT MT. STUD	
TOLERANCES: .XX ± .01 .XXX ± .005				SUB-SYSTEM AOS		DESIGNER J.LEWIS	07 OCT 2011
ANGULAR ± 0.5°				NEXT ASSY D1101939		DRAFTER E.SANCHEZ	11 OCT 2011
MATERIAL AISI 304				FINISH 63 μinch		CHECKER SEE DCC	SEE DCC
						APPROVAL SEE DCC	SEE DCC
						SIZE DWG. NO. B	D1101932
						REVISION v1	
						SCALE: 1:2	PROJECTION:
						SHEET 1 OF 1	