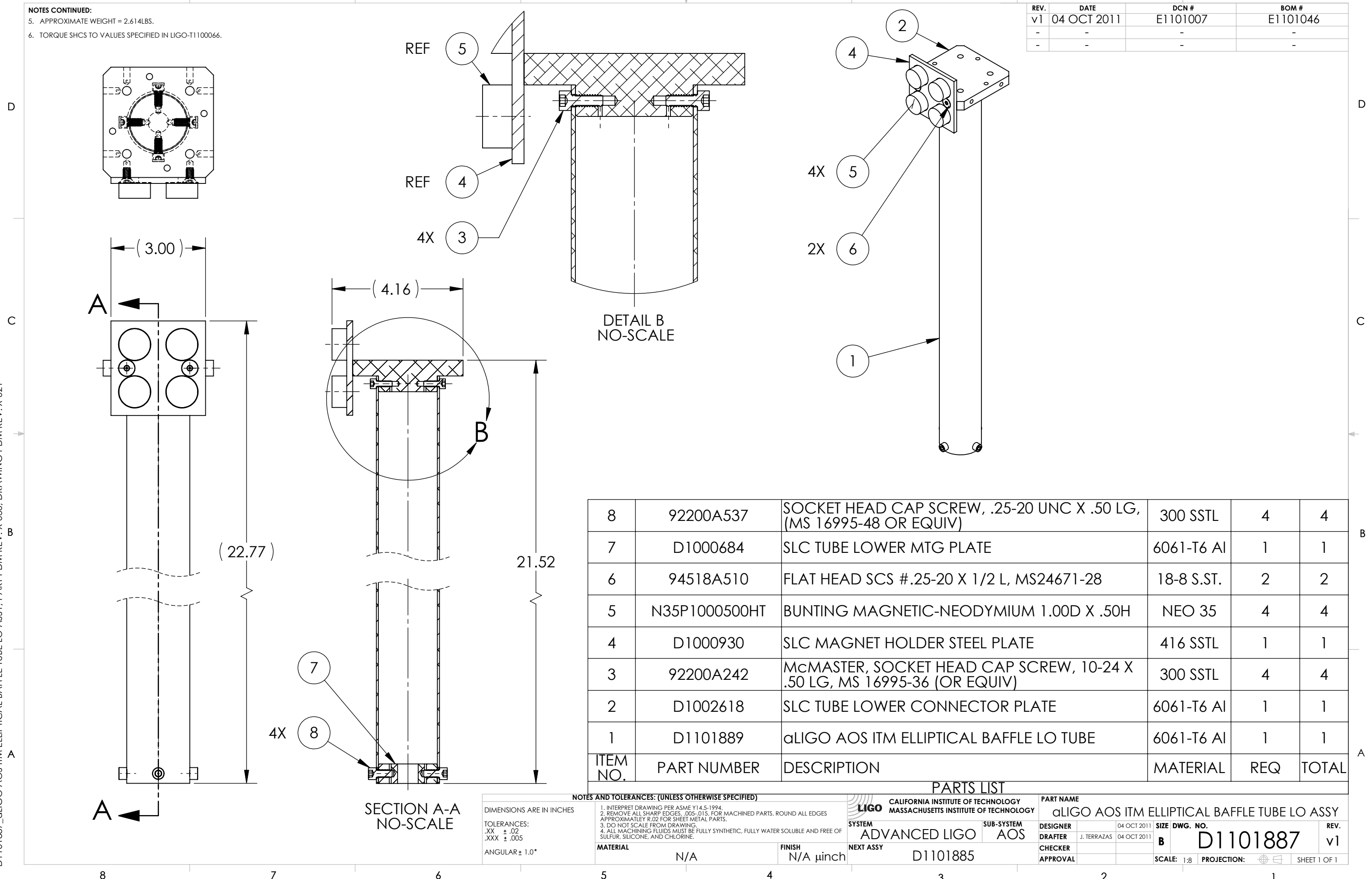


D1101887_aLIGO AOS ITM ELLIPTICAL BAFFLE TUBE LO ASSY, PART PDM REV: X-036, DRAWING PDM REV: X-021

NOTES CONTINUED:
 5. APPROXIMATE WEIGHT = 2.614LBS.
 6. TORQUE SHCS TO VALUES SPECIFIED IN LIGO-T1100066.

REV.	DATE	DCN #	BOM #
v1	04 OCT 2011	E1101007	E1101046
-	-	-	-
-	-	-	-



ITEM NO.	PART NUMBER	DESCRIPTION	MATERIAL	REQ	TOTAL
8	92200A537	SOCKET HEAD CAP SCREW, .25-20 UNC X .50 LG, (MS 16995-48 OR EQUIV)	300 SSTL	4	4
7	D1000684	SLC TUBE LOWER MTG PLATE	6061-T6 Al	1	1
6	94518A510	FLAT HEAD SCS #.25-20 X 1/2 L, MS24671-28	18-8 S.ST.	2	2
5	N35P1000500HT	BUNTING MAGNETIC-NEODYMIUM 1.00D X .50H	NEO 35	4	4
4	D1000930	SLC MAGNET HOLDER STEEL PLATE	416 SSTL	1	1
3	92200A242	McMASTER, SOCKET HEAD CAP SCREW, 10-24 X .50 LG, MS 16995-36 (OR EQUIV)	300 SSTL	4	4
2	D1002618	SLC TUBE LOWER CONNECTOR PLATE	6061-T6 Al	1	1
1	D1101889	aLIGO AOS ITM ELLIPTICAL BAFFLE LO TUBE	6061-T6 Al	1	1

PARTS LIST

NOTES AND TOLERANCES: (UNLESS OTHERWISE SPECIFIED)
 1. INTERPRET DRAWING PER ASME Y14.5-1994.
 2. REMOVE ALL SHARP EDGES, .005-.015, FOR MACHINED PARTS. ROUND ALL EDGES APPROXIMATELY R.02 FOR SHEET METAL PARTS.
 3. DO NOT SCALE FROM DRAWING.
 4. ALL MACHINING FLUIDS MUST BE FULLY SYNTHETIC, FULLY WATER SOLUBLE AND FREE OF SULFUR, SILICONE, AND CHLORINE.

TOLERANCES:
 .XX ± .02
 .XXX ± .005
 ANGULAR ± 1.0°

DIMENSIONS ARE IN INCHES

CALIFORNIA INSTITUTE OF TECHNOLOGY MASSACHUSETTS INSTITUTE OF TECHNOLOGY		PART NAME aLIGO AOS ITM ELLIPTICAL BAFFLE TUBE LO ASSY	
SYSTEM ADVANCED LIGO	SUB-SYSTEM AOS	DESIGNER J. TERRAZAS	DATE 04 OCT 2011
NEXT ASSY D1101885	CHECKER	DATE 04 OCT 2011	SIZE DWG. NO. B D1101887
MATERIAL N/A		FINISH N/A μinch	
APPROVAL		SCALE: 1:8 PROJECTION:	

A

B

C

D

8 7 6 5 4 3 2 1