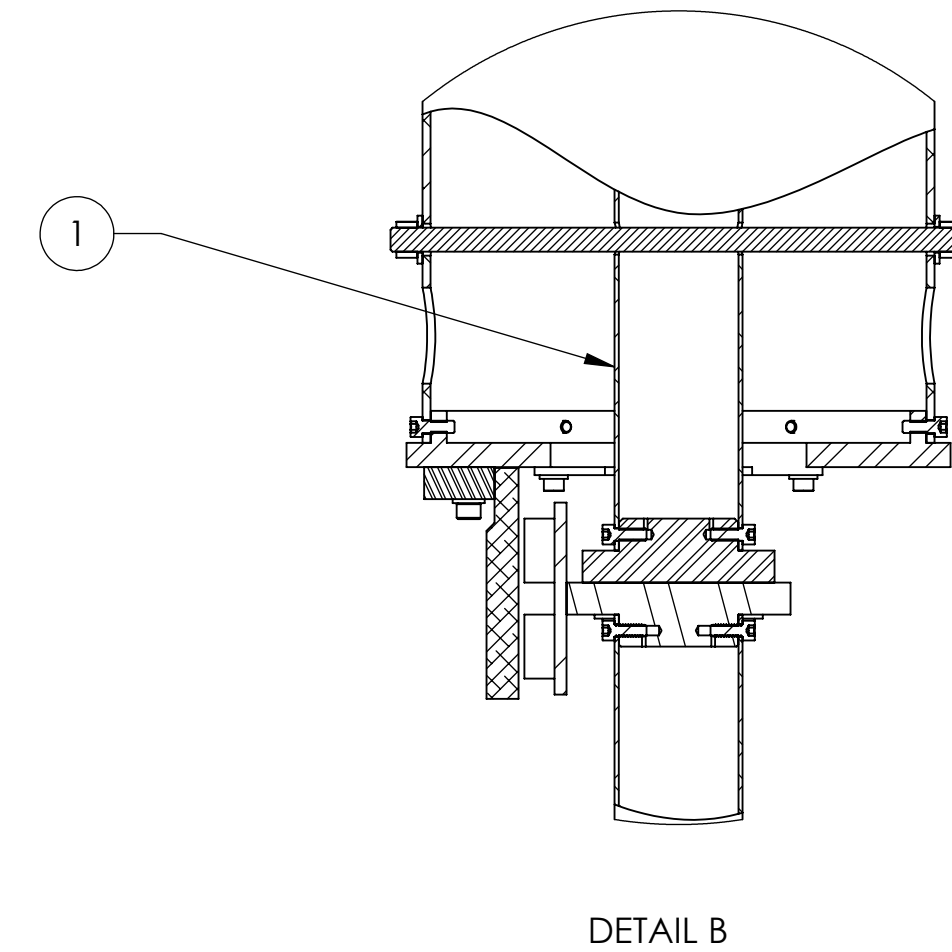
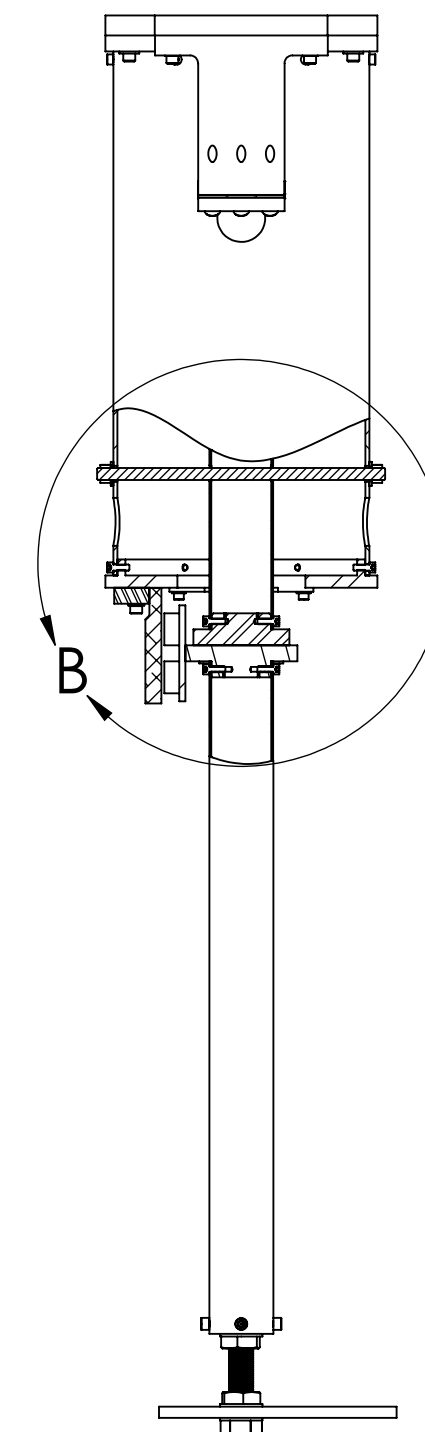
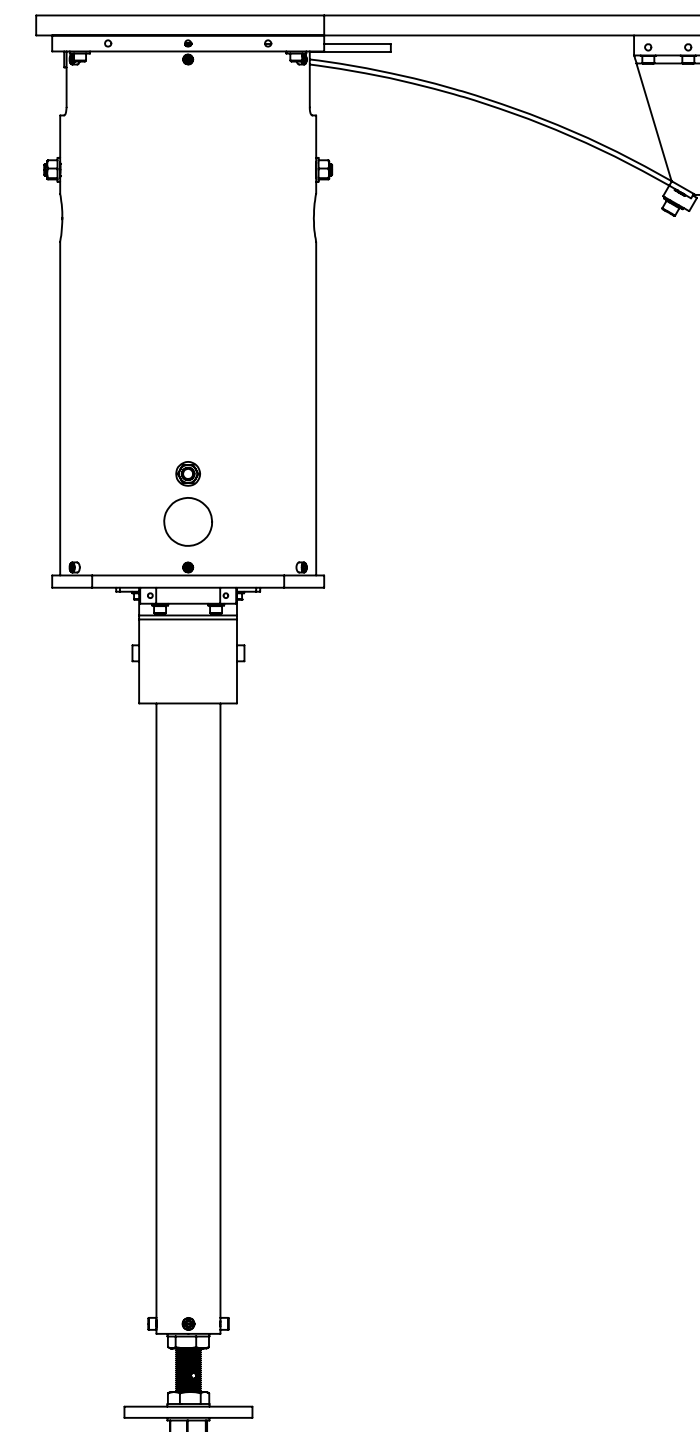
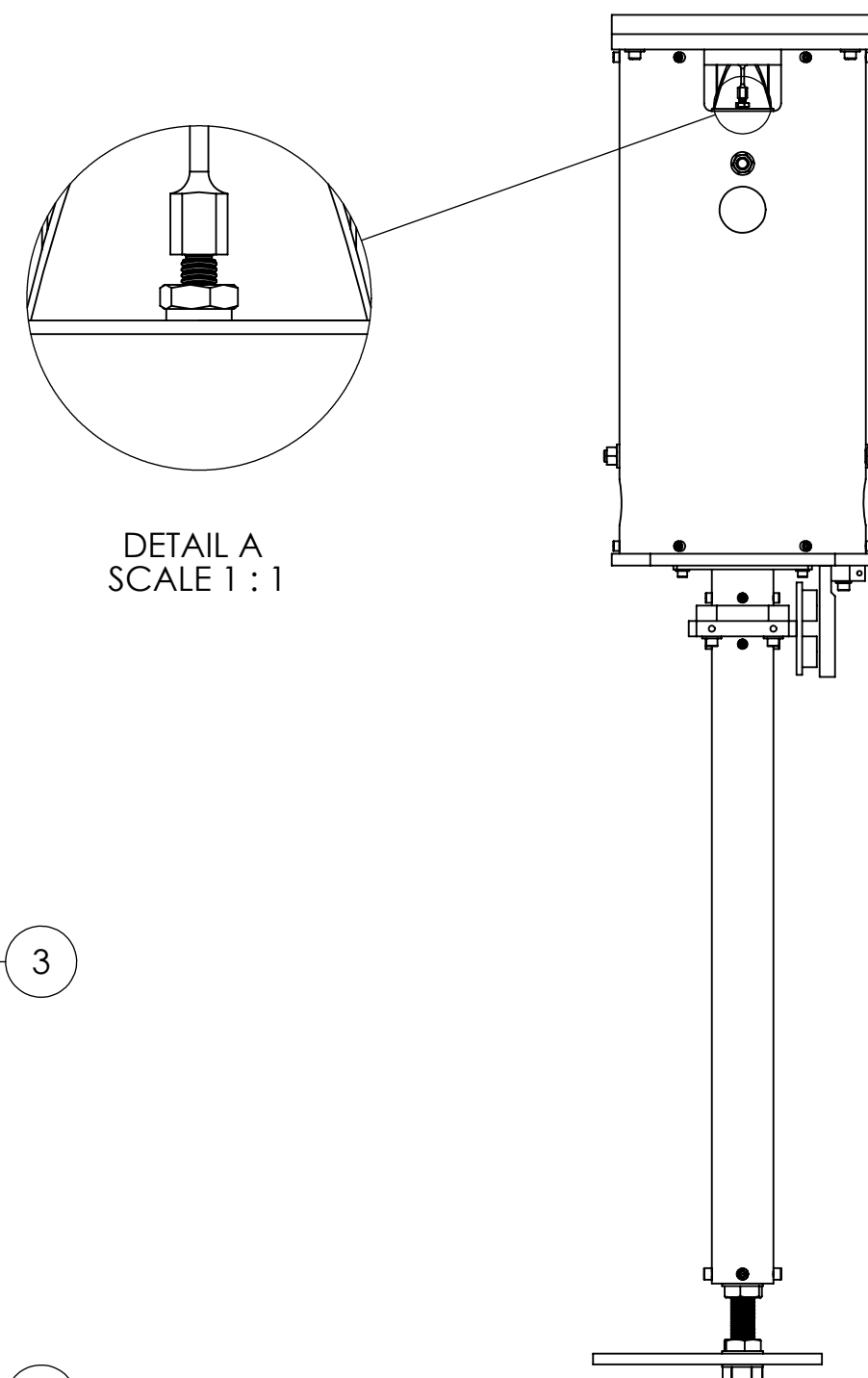
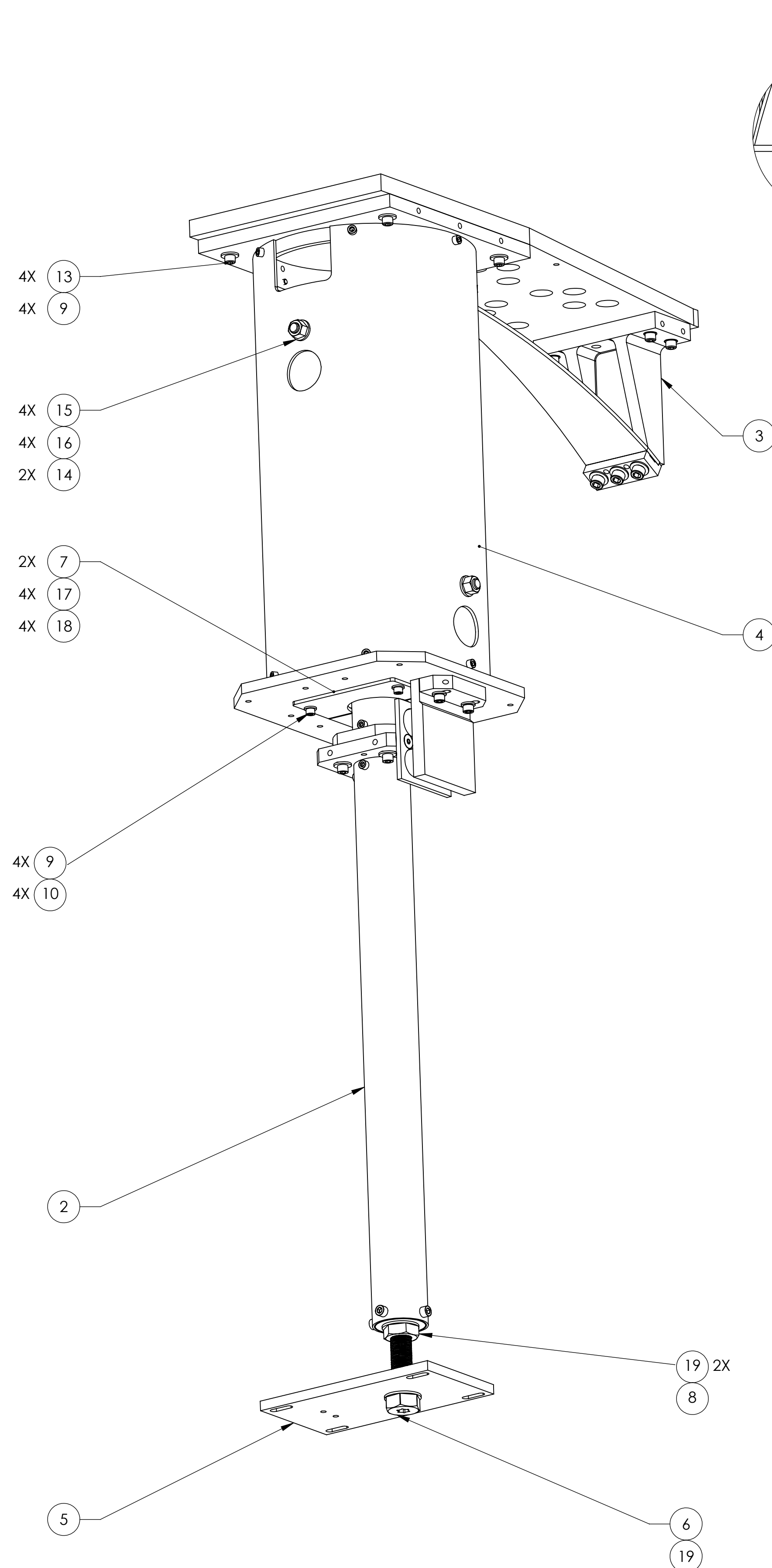


NOTES CONTINUED:

- 5. APPROXIMATE WEIGHT = 54.752 LBS.
- 6. TORQUE SHCS TO VALUES SPECIFIED IN LIGO-T1 100066.

REV.	DATE	DCN #	DRAWING TREE #
v1	04 OCT 2011	E1101007	E1101041
v2	15 JUN 2012	-	-
-	-	-	-

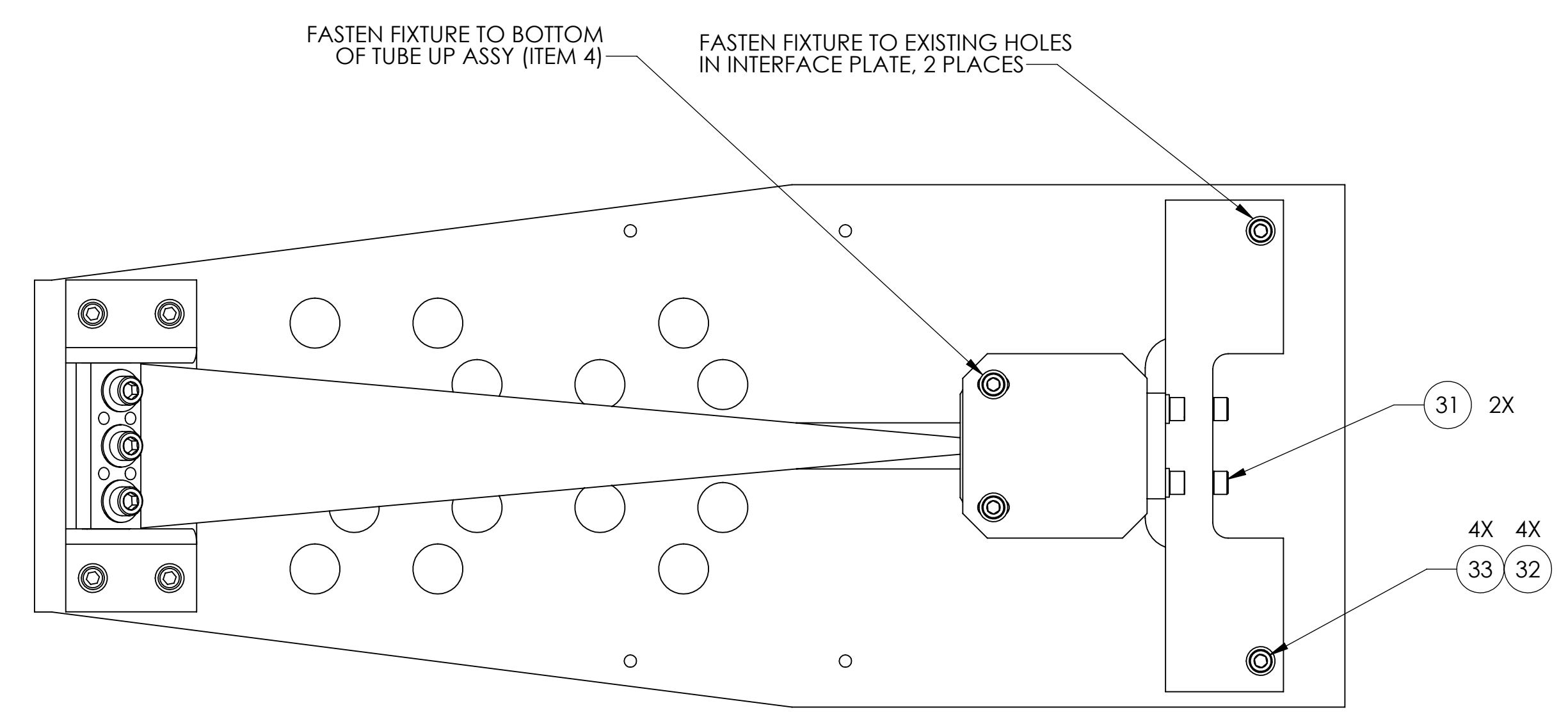
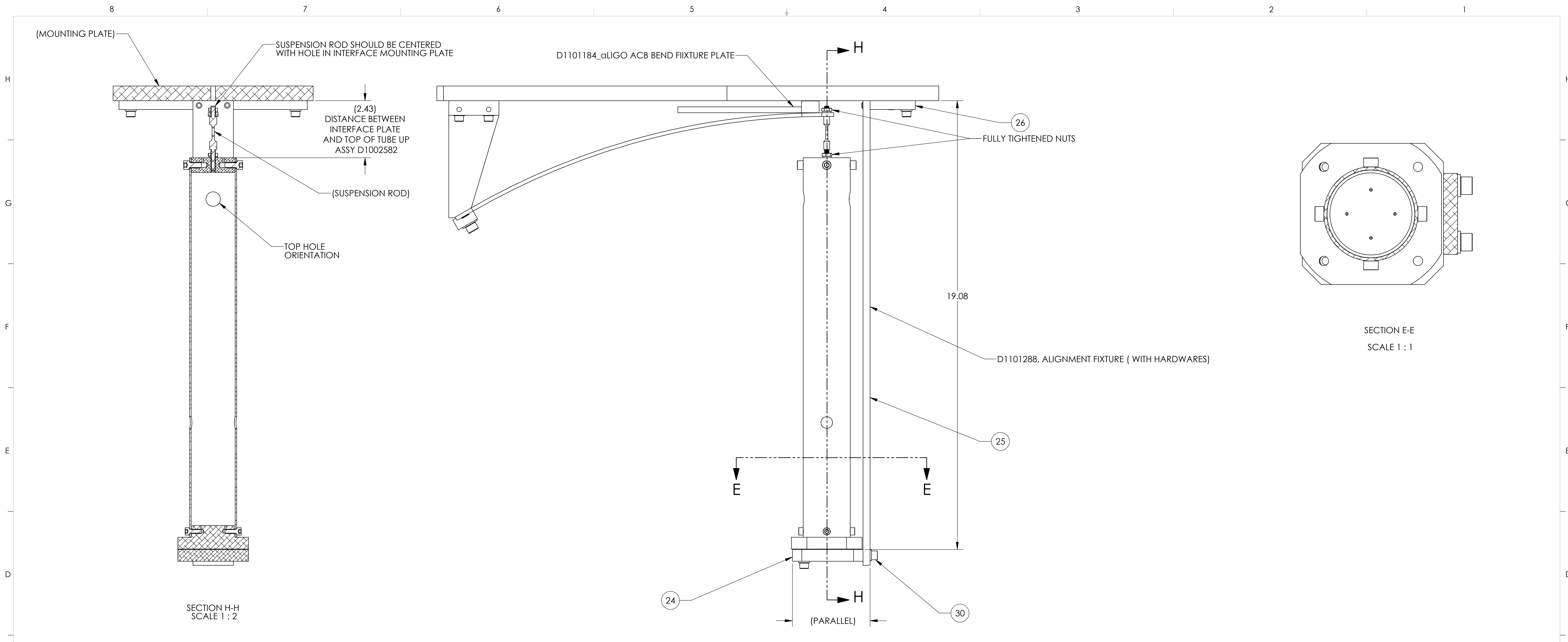


ITEM NO.	PART NUMBER	DESCRIPTION	MATERIAL	REQ	TOTAL
19	98017A220	WASHER #3/4, MCMMASTER	300 SSSL	3	3
18	98019A330	WASHER #10, NASM 15795-808	300 SSSL	4	4
17	92200A242	SOCKET HEAD SCREW, #10-24 X .50 LG (MS16995-36)	300 SSSL	4	4
16	N-3816-A	HEX NUT, .375-16	Ag-PLATED 300 SSSL	4	4
15	98370A019	WASHER #.375 X .75 OD, MCMMASTER	18-8 SSSL	4	4
14	95412A651	THREADED STUD .375-16 X 9, MCMMASTER	18-8 SSSL	2	2
13	C-2016-NA	SOCKET HEAD CAP SCREW, .25-20 X 1 LG	Ag-PLATED 300 SSSL	4	4
60	C-2016-N	SCREW SHCS, 1/4-20 X 1" LG	18-8 SSSL	4	4
11	N-1024-A	UC-COMP, HEX NUT, #10-24, SSSL	Ag-PLATED 300 SSSL	1	1
10	90945A741	WASHER, FLAT, #10 (NAS 620-C10 OR EQUIVALENT)	300 SSSL	1	1
9	98019A355	WASHER FLAT, 1/4" MIL-15795-810	300 SSSL	8	8
8	D1102316	NUT, HEX, #10-24 X .375, NI-CU	NICKEL-COPPER ALLOY 400	2	2
7	D1001120	SLC EARTHQUAKE STOP RING	6061-T6 Al	2	2
6	D1001186	SCREW HEX HD # 3/4-10 X 4.0 MODIFIED	18-8 SSSL	1	1
5	D1200338	αLIGO ITM ELLIPTICAL BAFFLE TOP MTG PLATE	6061-T6 Al	1	1
4	D1002564	SLC EDDY CURRENT DAMPING 8 DIA TUBE ASSY	N/A	1	1
3	D1200140	αLIGO AOS ITM ELLIPTICAL BAFFLE BLADE ASSY, BSC2 H1-L1	N/A	1	1
2	D1101887	αLIGO AOS ITM ELLIPTICAL BAFFLE TUBE LO ASSY	N/A	1	1
1	D1002582	SLC BAFFLE TUBE UP ASSEMBLY	N/A	1	1

NOTES AND TOLERANCES: (UNLESS OTHERWISE SPECIFIED)	
1. INTERPRET DRAWING PER ASME Y14.5-1994.	
2. REMOVE ALL SHARP EDGES, .005-.015, FOR MACHINED PARTS. ROUND ALL EDGES APPROXIMATELY R.02 FOR SHEET METAL PARTS.	
3. DO NOT SCALE FROM DRAWING.	
4. ALL MACHINING FLUIDS MUST BE FULLY SYNTHETIC, FULLY WATER SOLUBLE AND FREE OF SULFUR, SILICONE, AND CHLORINE.	
DIMENSIONS ARE IN INCHES	
TOLERANCES: .XX ± .02 .XXX ± .005	
ANGULAR ± 1.0°	
MATERIAL	N/A
FINISH	N/A μinch

CALIFORNIA INSTITUTE OF TECHNOLOGY MASSACHUSETTS INSTITUTE OF TECHNOLOGY		PART NAME αLIGO AOS ITM ELLIPTICAL BAFFLE SUSPENSION ASSY, H1/L1	
SYSTEM ADVANCED LIGO	SUB-SYSTEM AOS	DESIGNER J. TERRAZAS	DATE 04 OCT 2011
DRAFTER J. TERRAZAS	CHECKER H. KELMAN	DATE 06 OCT 2011	SIZE D
APPROVAL M. SMITH	DWG. NO. D1101885	REV. v2	SCALE 1:3
NEXT ASSY D1003238	PROJECTION 	SHEET 1 OF 3	

D1101885 αLIGO AOS ITM ELLIPTICAL BAFFLE SUSPENSION ASSY, PART PDM REV. X.061, DRAWING PDM REV. X.033



UPPER TUBE ALIGNMENT TOOLING

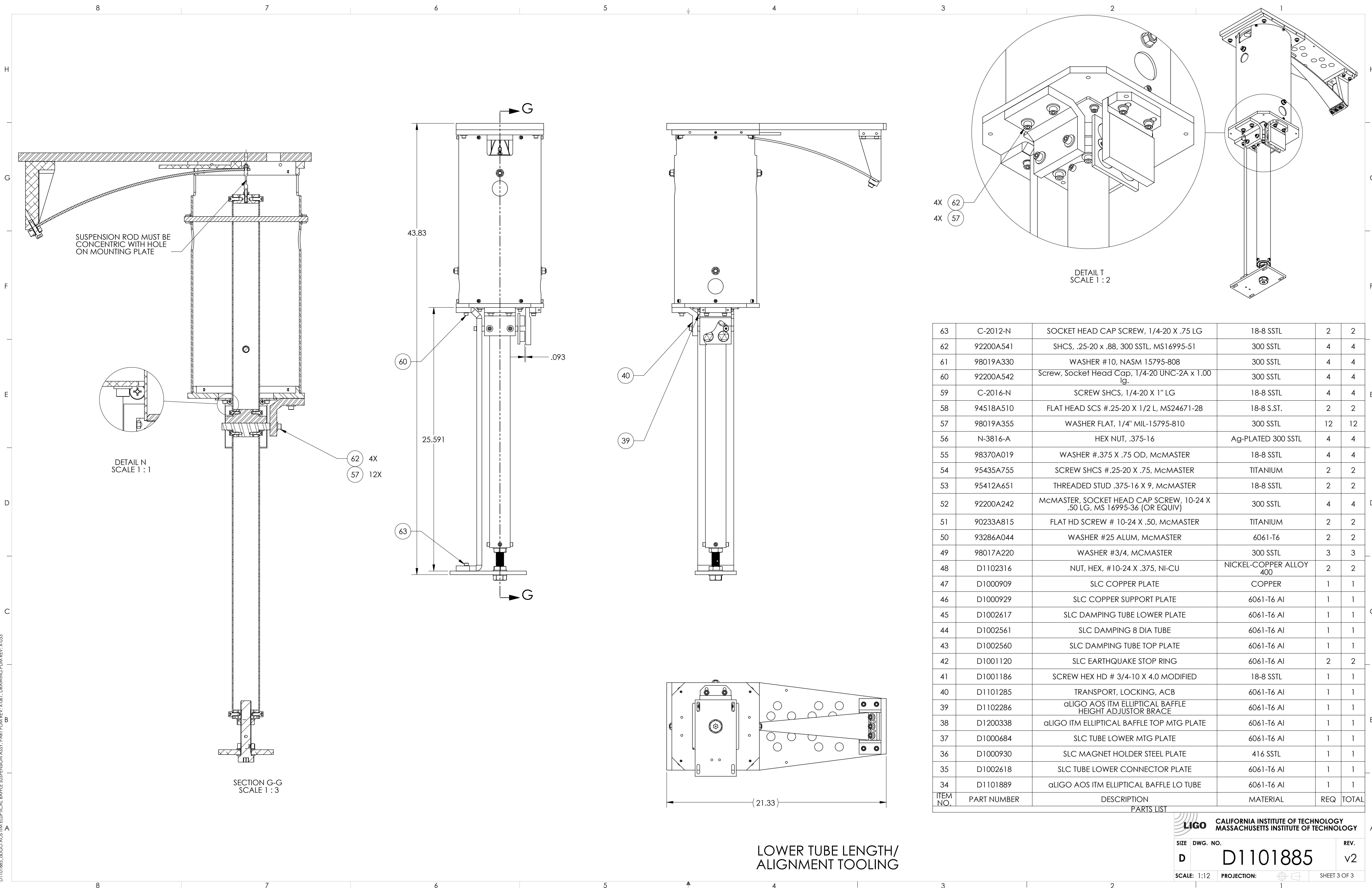
ITEM NO.	PART NUMBER	DESCRIPTION	MATERIAL	REQ	TOTAL
33	C-2016-NA	SOCKET HEAD CAP SCREW, SHC, 1/4-20 x 1" L	Ag-PLATED 300 SSSL	4	4
32	WF-25	WASHER, FLAT, 1/4 (NAS 620-C416 OR EQUIVALENT)	300 SSSL	6	6
31	C-2018-N	SOCKET HEAD CAP SCREW, SHC, 1/4-20 x 1.125" L	18-8 SSSL	2	2
30	C-2012-N	1/4"-20 X 0.75" SHCS	18-8 SSSL	2	2
29	NAS 620-C416L	1/4 FLAT WASHER, .260 ID x .47 OD X .02 THK	300 SSSL	4	4
28	92200A537	SOCKET HEAD CAP SCREW, .25-20 UNC X .50 LG, (MS 16995-48 OR EQUIV)	300 SSSL	4	4
27	92200A242	SOCKET HEAD SCREW, #10-24 X .50 LG (MS16995-36)	300 SSSL	4	4
26	D1101289	SUPPORT, TUBE UP	6061-T6 Al	1	1
25	D1101404	STIFFENER, TUBE UP	6061-T6 Al	1	1
24	D1101290	BRACE, TUBE UP	6061-T6 Al	1	1
23	D1002581	SLC SUSPENSION ROD SUPPORT	6061-T6 Al	1	1
22	D1002610	SLC TUBE UP CONNECTOR PLATE	6061-T6 Al	1	1
21	D1002612	SLC UPPER TUBE	6061-T6 Al	1	1
PARTS LIST					

LIGO CALIFORNIA INSTITUTE OF TECHNOLOGY
MASSACHUSETTS INSTITUTE OF TECHNOLOGY

SIZE DWG. NO. **D1101885** REV. **v2**

SCALE: 1:12 PROJECTION: SHEET 2 OF 3

D1101885_gLIGO ACB TELELLIPTICAL BAFFLE SUSPENSION ASSY, PART PDM REV: X.061, DRAWING PDM REV: X.033



SUSPENSION ROD MUST BE CONCENTRIC WITH HOLE ON MOUNTING PLATE

DETAIL N
SCALE 1 : 1

SECTION G-G
SCALE 1 : 3

DETAIL T
SCALE 1 : 2

LOWER TUBE LENGTH/
ALIGNMENT TOOLING

ITEM NO.	PART NUMBER	DESCRIPTION	MATERIAL	REQ	TOTAL
63	C-2012-N	SOCKET HEAD CAP SCREW, 1/4-20 X .75 LG	18-8 SSSL	2	2
62	92200A541	SHCS, .25-20 x .88, 300 SSSL, MS16995-51	300 SSSL	4	4
61	98019A330	WASHER #10, NASM 15795-808	300 SSSL	4	4
60	92200A542	Screw, Socket Head Cap, 1/4-20 UNC-2A x 1.00 lg.	300 SSSL	4	4
59	C-2016-N	SCREW SHCS, 1/4-20 X 1" LG	18-8 SSSL	4	4
58	94518A510	FLAT HEAD SCS #.25-20 X 1/2 L, MS24671-28	18-8 S.ST.	2	2
57	98019A355	WASHER FLAT, 1/4" MIL-15795-810	300 SSSL	12	12
56	N-3816-A	HEX NUT, .375-16	Ag-PLATED 300 SSSL	4	4
55	98370A019	WASHER #.375 X .75 OD, McMASTER	18-8 SSSL	4	4
54	95435A755	SCREW SHCS #.25-20 X .75, McMASTER	TITANIUM	2	2
53	95412A651	THREADED STUD .375-16 X 9, McMASTER	18-8 SSSL	2	2
52	92200A242	McMASTER, SOCKET HEAD CAP SCREW, 10-24 X .50 LG, MS 16995-36 (OR EQUIV)	300 SSSL	4	4
51	90233A815	FLAT HD SCREW # 10-24 X .50, McMASTER	TITANIUM	2	2
50	93286A044	WASHER #25 ALUM, McMASTER	6061-T6	2	2
49	98017A220	WASHER #3/4, McMASTER	300 SSSL	3	3
48	D1102316	NUT, HEX, #10-24 X .375, NI-CU	NICKEL-COPPER ALLOY 400	2	2
47	D1000909	SLC COPPER PLATE	COPPER	1	1
46	D1000929	SLC COPPER SUPPORT PLATE	6061-T6 Al	1	1
45	D1002617	SLC DAMPING TUBE LOWER PLATE	6061-T6 Al	1	1
44	D1002561	SLC DAMPING 8 DIA TUBE	6061-T6 Al	1	1
43	D1002560	SLC DAMPING TUBE TOP PLATE	6061-T6 Al	1	1
42	D1001120	SLC EARTHQUAKE STOP RING	6061-T6 Al	2	2
41	D1001186	SCREW HEX HD # 3/4-10 X 4.0 MODIFIED	18-8 SSSL	1	1
40	D1101285	TRANSPORT, LOCKING, ACB	6061-T6 Al	1	1
39	D1102286	αLIGO AOS ITM ELLIPTICAL BAFFLE HEIGHT ADJUSTOR BRACE	6061-T6 Al	1	1
38	D1200338	αLIGO ITM ELLIPTICAL BAFFLE TOP MTG PLATE	6061-T6 Al	1	1
37	D1000684	SLC TUBE LOWER MTG PLATE	6061-T6 Al	1	1
36	D1000930	SLC MAGNET HOLDER STEEL PLATE	416 SSSL	1	1
35	D1002618	SLC TUBE LOWER CONNECTOR PLATE	6061-T6 Al	1	1
34	D1101889	αLIGO AOS ITM ELLIPTICAL BAFFLE LO TUBE	6061-T6 Al	1	1
PARTS LIST					

LIGO CALIFORNIA INSTITUTE OF TECHNOLOGY
MASSACHUSETTS INSTITUTE OF TECHNOLOGY

SIZE DWG. NO. **D1101885** REV. **v2**

SCALE: 1:12 PROJECTION: SHEET 3 OF 3

D1101885_αLIGO AOS ITM ELLIPTICAL BAFFLE SUSPENSION ASSY. PART PDM REV. X:061. DRAWING PDM REV. X:033