

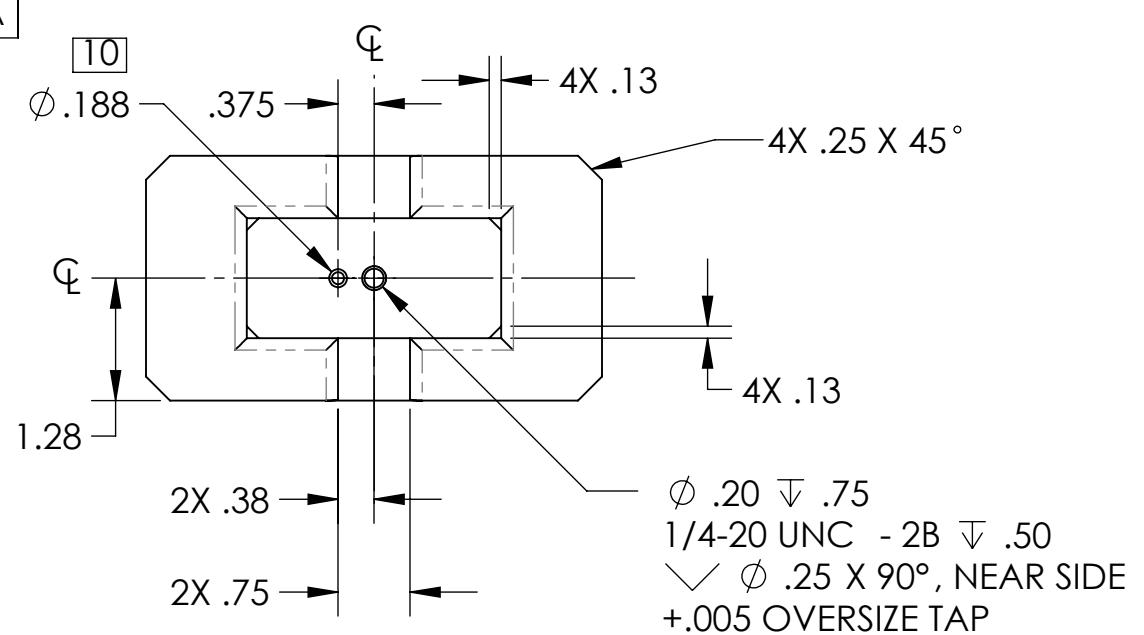
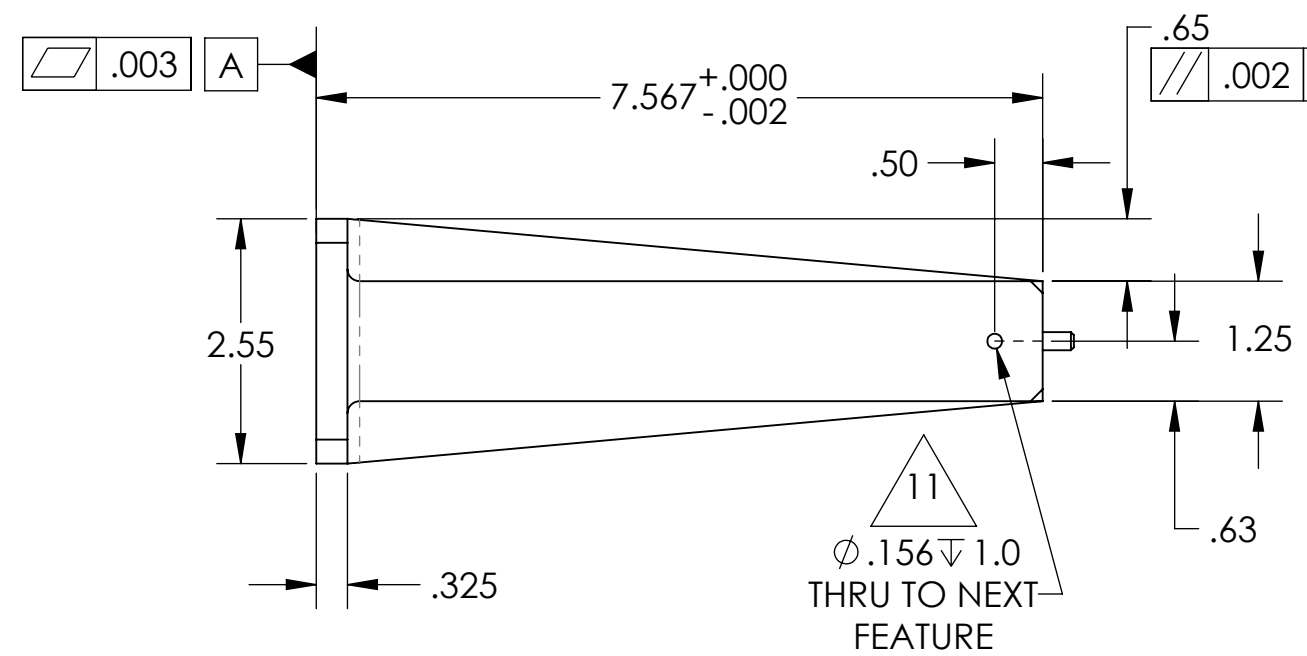
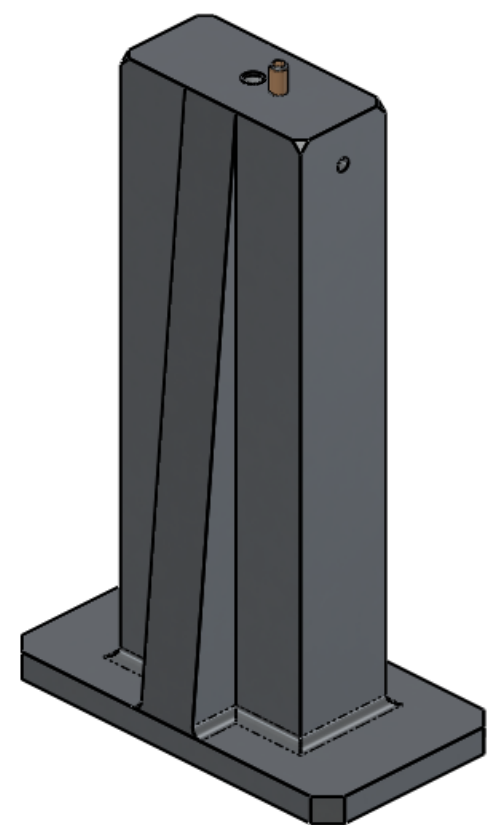
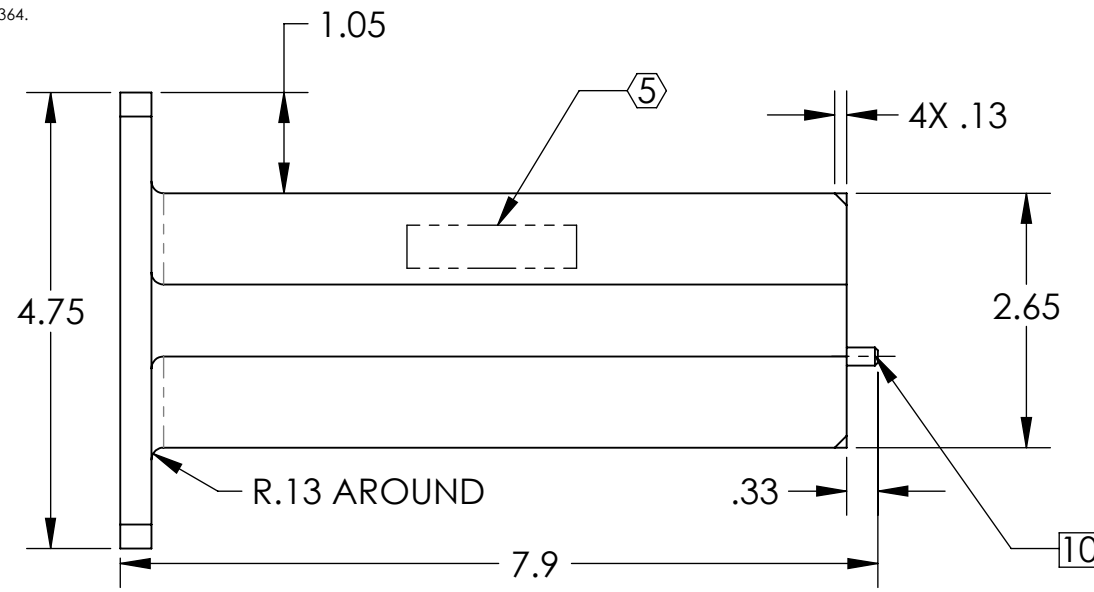
NOTES CONTINUED:

- 5 SCRIBE, ENGRAVE (A VIBRATORY TOOL MAY BE USED), LASER MARK OR MECHANICALLY STAMP (NO INKS OR DYES) DRAWING PART NUMBER, REVISION (AND VARIANT OR "TYPE" IF APPLICABLE) ON NOTED SURFACE OF PART FOLLOWED ON THE NEXT LINE WITH A THREE DIGIT SERIAL NUMBER. SERIAL NUMBERS START AT 001 FOR THE FIRST ARTICLE AND PROCEED CONSECUTIVELY. USE MINIMUM 0.12" HIGH CHARACTERS, UNLESS THE SIZE OF THE PART DICTATES SMALLER CHARACTERS. EXAMPLE: DXXXXXX-VY, TYPE-XX, S/N XXX
- 6 APPROXIMATE WEIGHT = 3.06 LB.
- 7 MACHINE ALL SURFACES TO REMOVE OXIDES AND MILL FINISH. USE OF ABRASIVE REMOVAL TECHNIQUES IS NOT ALLOWED. REFER TO LIGO-E0900364
- 8 ALL PARTS SHALL BE MANUFACTURED IN ACCORDANCE WITH LIGO SPECIFICATION E0900364.
- 9 ALL MATERIAL IS TO BE VIRGIN MATERIAL (i.e. NO WELD REPAIRS, PLUGS OR RECYCLED MATERIAL). NO REPAIRS SHALL BE MADE UNLESS APPROVED IN ADVANCE, AND IN WRITING, BY LIGO LABORATORY. REFER TO LIGO-E0900364.

10 3/16 BRASS DOWEL PIN (Ø 1875-1877IN X .625IN LONG), PRESSED FIT AFTER GLIGO CLEANING.

11 NEW FEATURE ADDED TO -V1 PART

REV.	DATE	DCN #	DRAWING TREE #
v1	17-JUN-2012	E1100986-v 11	E1100987-v 11
v2	08-OCT-2012	E1200885-v1	E1100987-v12
-	-	-	-



D1101821_qlIGO_PESDESTAL_2IN MIRROR MOUNT, PART PDM REV: X-043, DRAWING PDM REV: X-032

NOTES AND TOLERANCES: (UNLESS OTHERWISE SPECIFIED)	
DIMENSIONS ARE IN INCHES	
TOLERANCES: .XX ± .01 .XXX ± .005 ANGULAR ± 1.0°	
1. INTERPRET DRAWING PER ASME Y14.5-1994. 2. REMOVE ALL SHARP EDGES, .005-.015, FOR MACHINED PARTS. ROUND ALL EDGES APPROXIMATELY R.02 FOR SHEET METAL PARTS. 3. DO NOT SCALE FROM DRAWING. 4. ALL MACHINING FLUIDS MUST BE FULLY SYNTHETIC, FULLY WATER SOLUBLE AND FREE OF SULFUR, SILICONE, AND CHLORINE.	
MATERIAL	6061 Alloy
FINISH	63 µinch

CALIFORNIA INSTITUTE OF TECHNOLOGY MASSACHUSETTS INSTITUTE OF TECHNOLOGY		PART NAME aLIGO, PESDESTAL, 2IN MIRROR MOUNT	
SYSTEM	ADVANCED LIGO	SUB-SYSTEM	AOS
DESIGNER	A. Cole	9/20/11	SIZE DWG. NO.
DRAFTER	A. COLE	4-OCT-2011	B D1101821
CHECKER	C. TORRIE	08-OCT-12	
APPROVAL	A. BROOKS	01-MAY-12	REV. v2
NEXT ASSY		D1101084, D1101848	
SCALE: 1:2		PROJECTION:	
SHEET 1 OF 1			