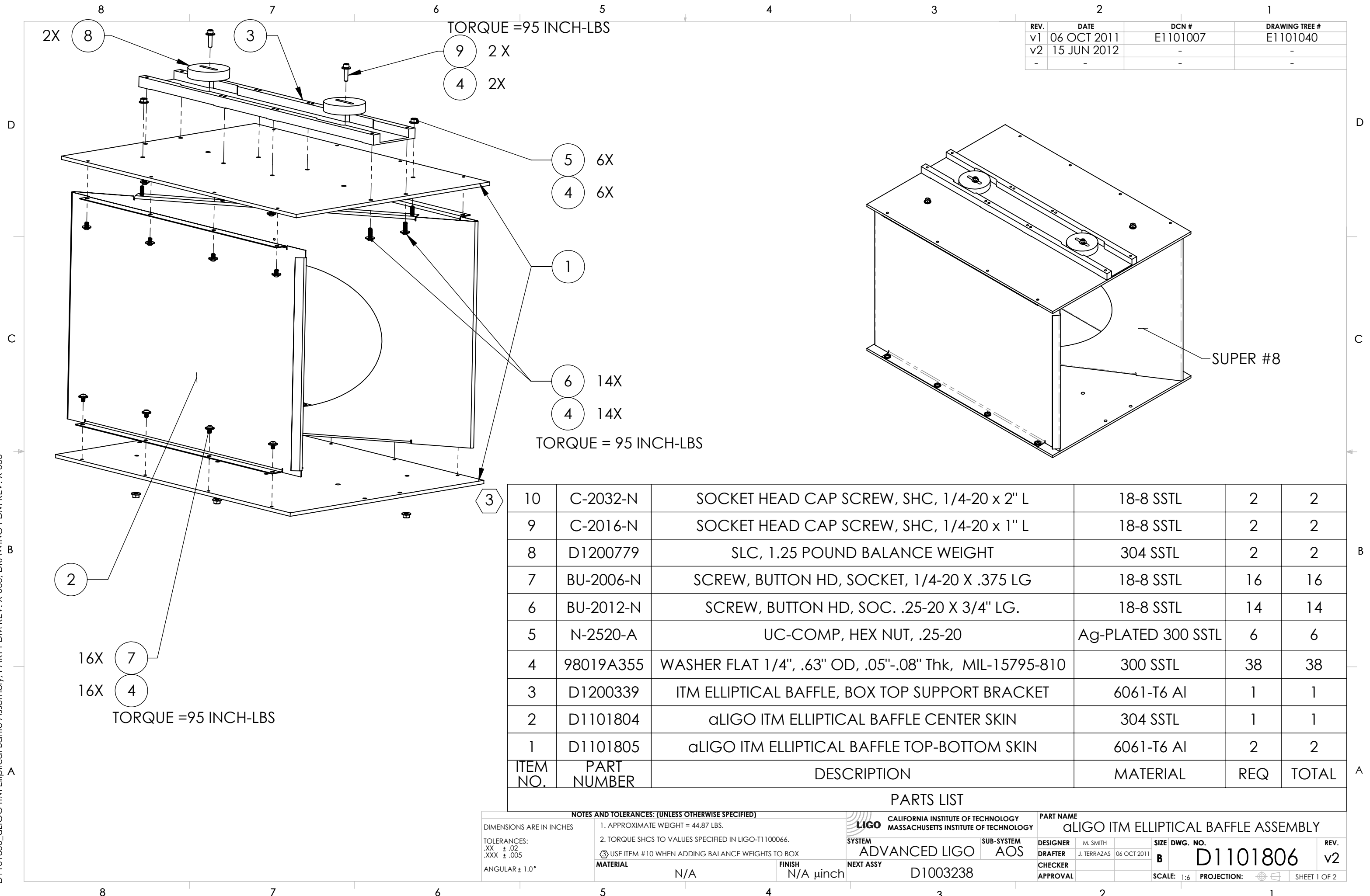


D1101806_αLIGO ITM Elliptical Baffle Assembly, PART PDM REV: X-060, DRAWING PDM REV: X-035

REV.	DATE	DCN #	DRAWING TREE #
v1	06 OCT 2011	E1101007	E1101040
v2	15 JUN 2012	-	-
-	-	-	-



ITEM NO.	PART NUMBER	DESCRIPTION	MATERIAL	REQ	TOTAL
10	C-2032-N	SOCKET HEAD CAP SCREW, SHC, 1/4-20 x 2" L	18-8 SSSL	2	2
9	C-2016-N	SOCKET HEAD CAP SCREW, SHC, 1/4-20 x 1" L	18-8 SSSL	2	2
8	D1200779	SLC, 1.25 POUND BALANCE WEIGHT	304 SSSL	2	2
7	BU-2006-N	SCREW, BUTTON HD, SOCKET, 1/4-20 X .375 LG	18-8 SSSL	16	16
6	BU-2012-N	SCREW, BUTTON HD, SOC. .25-20 X 3/4" LG.	18-8 SSSL	14	14
5	N-2520-A	UC-COMP, HEX NUT, .25-20	Ag-PLATED 300 SSSL	6	6
4	98019A355	WASHER FLAT 1/4", .63" OD, .05"-.08" Thk, MIL-15795-810	300 SSSL	38	38
3	D1200339	ITM ELLIPTICAL BAFFLE, BOX TOP SUPPORT BRACKET	6061-T6 Al	1	1
2	D1101804	αLIGO ITM ELLIPTICAL BAFFLE CENTER SKIN	304 SSSL	1	1
1	D1101805	αLIGO ITM ELLIPTICAL BAFFLE TOP-BOTTOM SKIN	6061-T6 Al	2	2

PARTS LIST

NOTES AND TOLERANCES: (UNLESS OTHERWISE SPECIFIED)

DIMENSIONS ARE IN INCHES

TOLERANCES:
 .XX ± .02
 .XXX ± .005
 ANGULAR ± 1.0°

1. APPROXIMATE WEIGHT = 44.87 LBS.
 2. TORQUE SHCS TO VALUES SPECIFIED IN LIGO-T1100066.
 ③ USE ITEM # 10 WHEN ADDING BALANCE WEIGHTS TO BOX

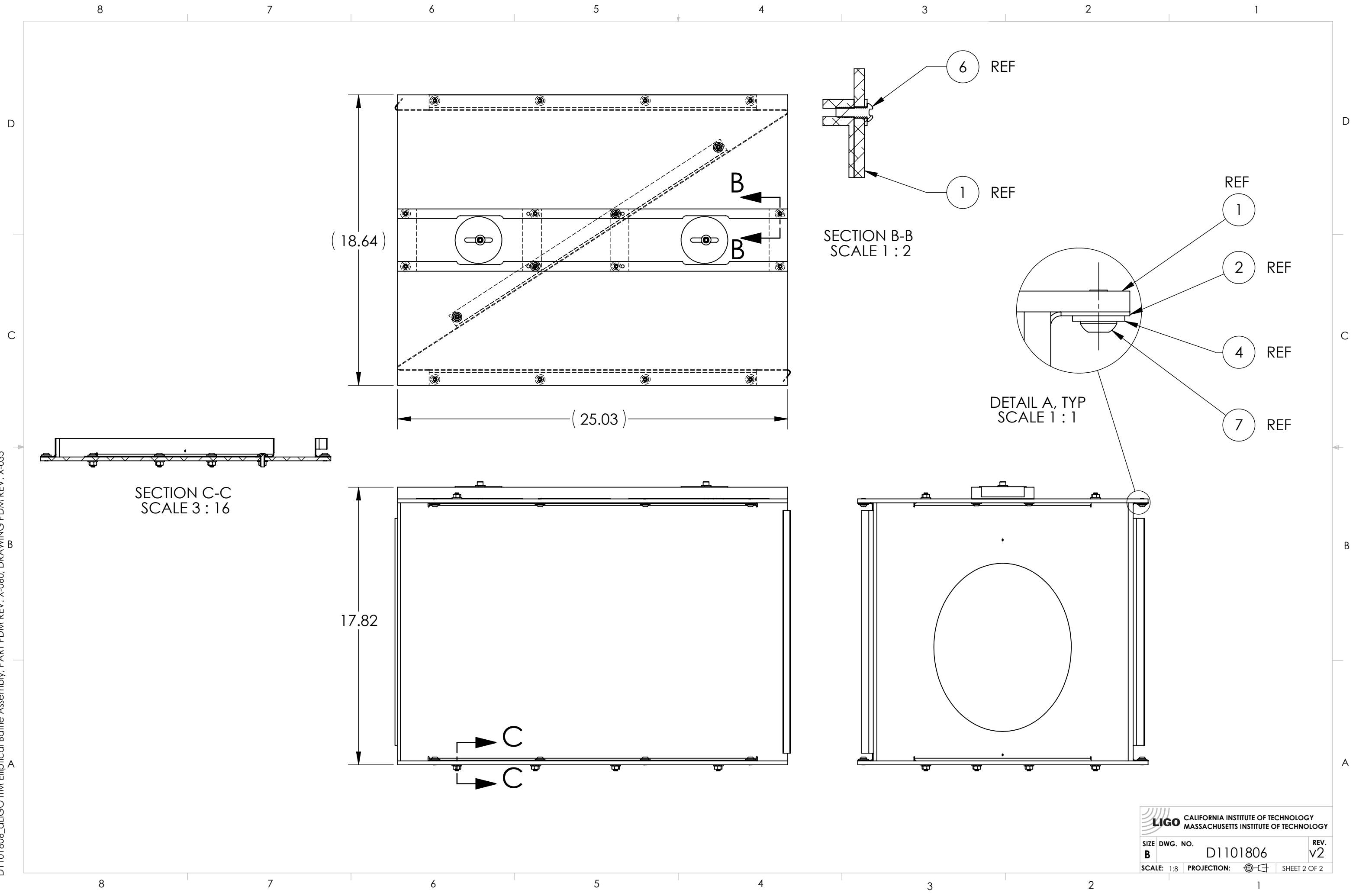
MATERIAL	N/A	FINISH	N/A μinch
SYSTEM	ADVANCED LIGO	SUB-SYSTEM	AOS
NEXT ASSY	D1003238		

**CALIFORNIA INSTITUTE OF TECHNOLOGY
 MASSACHUSETTS INSTITUTE OF TECHNOLOGY**

PART NAME
 αLIGO ITM ELLIPTICAL BAFFLE ASSEMBLY

DESIGNER	M. SMITH	SIZE	DWG. NO.	REV.
DRAFTER	J. TERRAZAS	DATE	06 OCT 2011	v2
CHECKER		SCALE	1:6	PROJECTION:
APPROVAL		SHEET 1 OF 2		

D1101806_dLIGO ITM Elliptical Baffle Assembly, PART PDM REV: X-060, DRAWING PDM REV: X-035



LIGO CALIFORNIA INSTITUTE OF TECHNOLOGY
MASSACHUSETTS INSTITUTE OF TECHNOLOGY

SIZE	DWG. NO.	REV.
B	D1101806	v2
SCALE: 1:8	PROJECTION:	SHEET 2 OF 2