

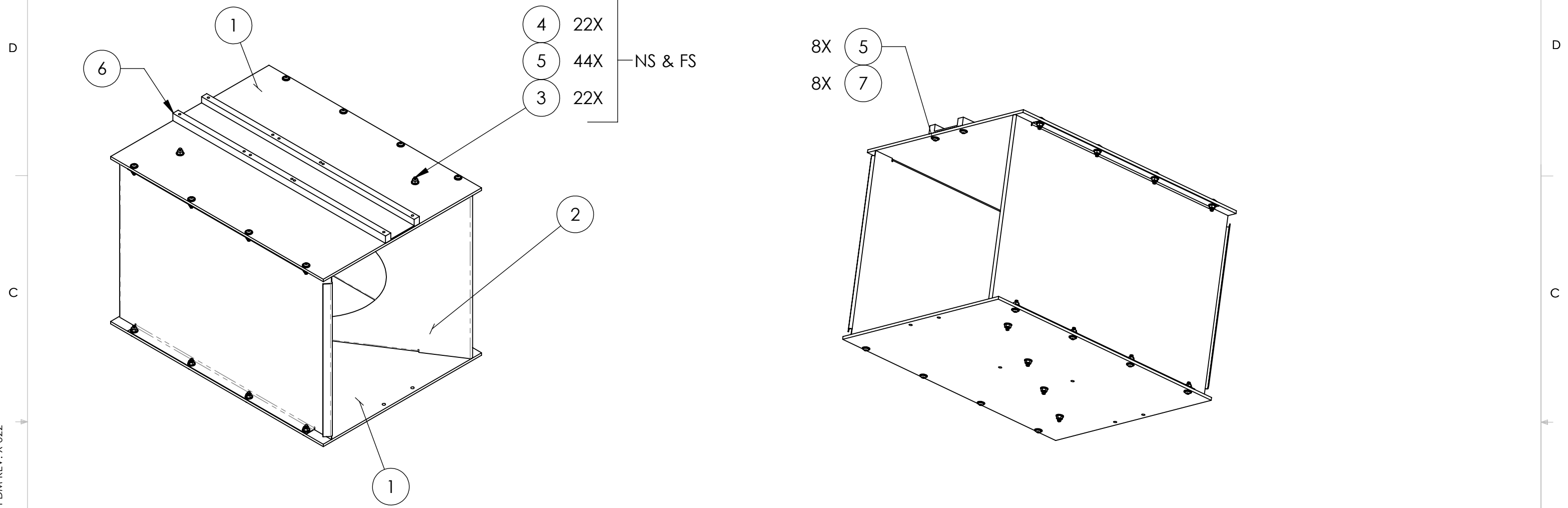
D1101806_αLIGO ITM Elliptical Baffle Assembly, PART PDM REV: X-037, DRAWING PDM REV: X-022

8 7 6 5 4 3 2 1

NOTES CONTINUED:

5. APPROXIMATE WEIGHT = 45.189 LBS.

REV.	DATE	DCN #	BOM #
v1	06 OCT 2011	E1101007	E1101040
-	-	-	-
-	-	-	-



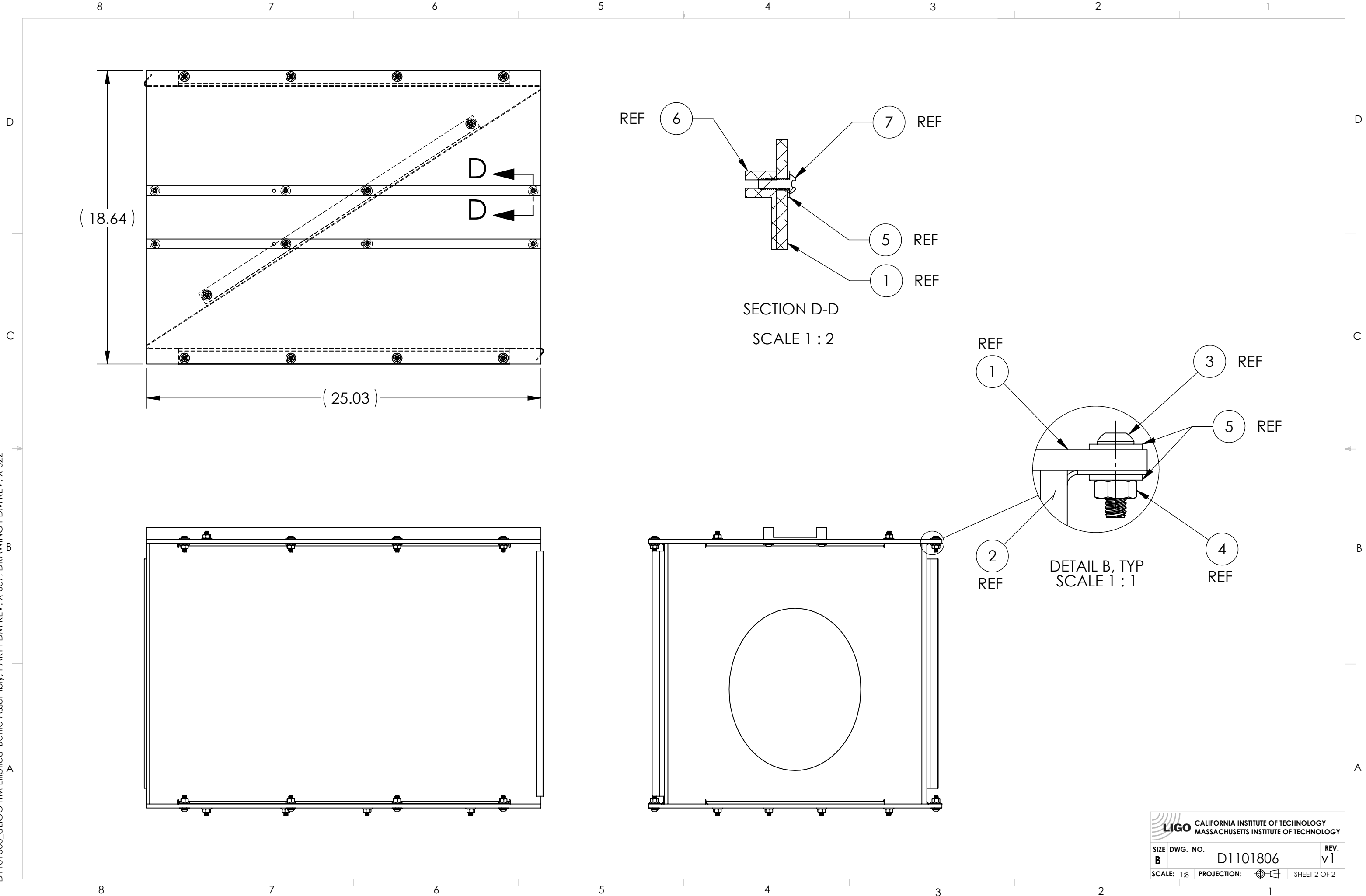
ITEM NO.	PART NUMBER	DESCRIPTION	MATERIAL	REQ	SPARE	TOTAL
7	BU-2012-N	SCREW, BUTTON HD, SOC. .25-20 X 3/4" LG.	18-8 SSTL	8		8
6	D1101813	αLIGO ITM ELLIPTICAL BAFFLE TUBE MOUNT CHANNEL	6061-T6 Al	1		1
5	98019A355	WASHER FLAT, 1/4" MIL-15795-810	300 SSTL	52		52
4	N-2520-A	UC-COMP, HEX NUT, .25-20	Ag-PLATED 300 SSTL	22	10	32
3	BU-2014-N	SCREW, BUTTON HD, SOCKET, 1/4-20 X .875 LG	18-8 SSTL	22		22
2	D1101804	αLIGO ITM ELLIPTICAL BAFFLE CENTER SKIN	304 SSTL	1	0	1
1	D1101805	αLIGO ITM ELLIPTICAL BAFFLE TOP-BOTTOM SKIN	6061-T6 Al	2	0	2

PARTS LIST

<p>NOTES AND TOLERANCES: (UNLESS OTHERWISE SPECIFIED)</p> <p>DIMENSIONS ARE IN INCHES</p> <p>TOLERANCES: .XX ± .02 .XXX ± .005 ANGULAR ± 1.0°</p>		<p>1. INTERPRET DRAWING PER ASME Y14.5-1994. 2. REMOVE ALL SHARP EDGES, .005-.015, FOR MACHINED PARTS. ROUND ALL EDGES APPROXIMATELY R.02 FOR SHEET METAL PARTS. 3. DO NOT SCALE FROM DRAWING. 4. ALL MACHINING FLUIDS MUST BE FULLY SYNTHETIC, FULLY WATER SOLUBLE AND FREE OF SULFUR, SILICONE, AND CHLORINE.</p>		<p>LIGO CALIFORNIA INSTITUTE OF TECHNOLOGY MASSACHUSETTS INSTITUTE OF TECHNOLOGY</p>		<p>PART NAME αLIGO ITM ELLIPTICAL BAFFLE ASSEMBLY</p>	
<p>MATERIAL N/A</p>		<p>FINISH N/A μinch</p>		<p>SYSTEM ADVANCED LIGO SUB-SYSTEM AOS</p>		<p>DESIGNER M. SMITH DRAFTER J. TERRAZAS 06 OCT 2011 CHECKER APPROVAL</p>	
<p>NEXT ASSY D1003238</p>		<p>SCALE: 1:8 PROJECTION:</p>		<p>SIZE DWG. NO. B D1101806</p>		<p>REV. v1</p>	

8 7 6 5 4 3 2 1

D1101806_dLIGO ITM Elliptical Baffle Assembly, PART PDM REV: X-037, DRAWING PDM REV: X-022



 CALIFORNIA INSTITUTE OF TECHNOLOGY MASSACHUSETTS INSTITUTE OF TECHNOLOGY		
SIZE	DWG. NO.	REV.
B	D1101806	v1
SCALE: 1:8	PROJECTION:	SHEET 2 OF 2