

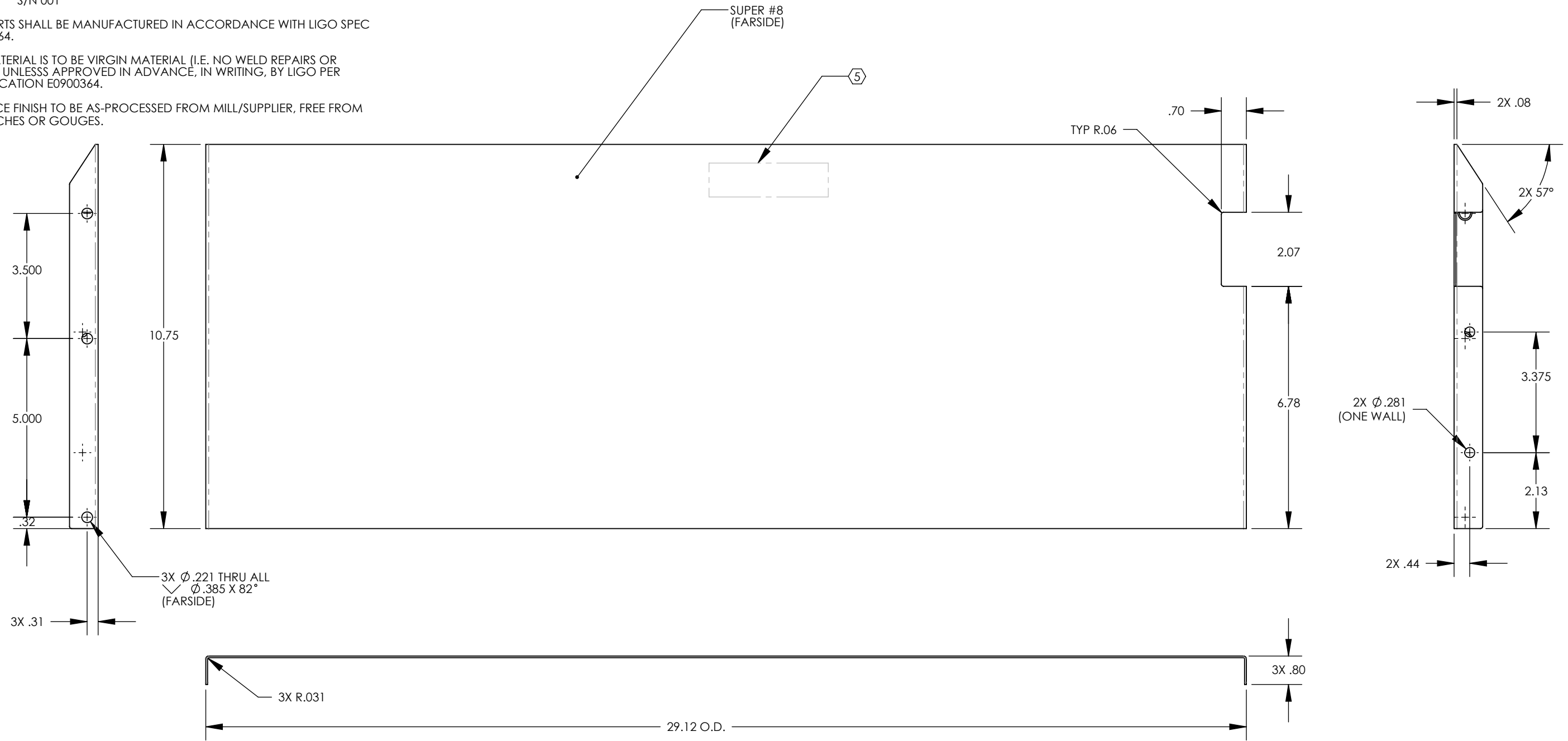
D1101796_AdlIGO_AOS_SLC_ARM Cavity Baffle Center, Mirror Skin, PART PDM REV: X-005, DRAWING PDM REV: X-004

8 7 6 5 4 3 2 1

NOTES: UNLESS OTHERWISE SPECIFIED

1. INTERPRET DRAWING PER ASME Y14.5-1994.
2. REMOVE ALL SHARP EDGES, .005-.015 ON ALL EDGES AND HOLES.
3. DO NOT SCALE FROM DRAWING.
4. ALL MACHINE FLUIDS MUST BE FULLY SYNTHETIC, FULL WATER SOLUBLE AND FREE OF SULFUR, SILICONE AND CHLORINE PER LIGO DOCUMENT E0900237.
5. MECHANICALLY STAMP (NO INKS OR DYES) PART NUMBER, REVISION AND SERIAL NUMBER .020 DEEP WITH MINIMUM CHARACTER HEIGHT .156 APPROXIMATELY WHERE SHOWN. SERIAL NUMBER WILL START AT 001 AND PROCEED CONSECUTIVELY. EXAMPLE: D100XXXX-V1 S/N 001
6. ALL PARTS SHALL BE MANUFACTURED IN ACCORDANCE WITH LIGO SPEC E0900364.
7. ALL MATERIAL IS TO BE VIRGIN MATERIAL (I.E. NO WELD REPAIRS OR PLUGS) UNLESS APPROVED IN ADVANCE, IN WRITING, BY LIGO PER SPECIFICATION E0900364.
8. SURFACE FINISH TO BE AS-PROCESSED FROM MILL/SUPPLIER, FREE FROM SCRATCHES OR GOUGES.

| REV. | DATE | DCN # | DRAWING TREE # |
|------|-------------|----------|----------------|
| v1 | 12 SEP 2011 | E1100335 | - |
| - | - | - | - |
| - | - | - | - |



NOTES AND TOLERANCES: (UNLESS OTHERWISE SPECIFIED)

DIMENSIONS ARE IN
TOLERANCES:
.XX ± .03
.XXX ± .015
ANGULAR ± 1.0°

SEE TOP LEFT FOR NOTES

MATERIAL 18 GAUGE, 304 SSSL

FINISH SUPER #8

LIGO CALIFORNIA INSTITUTE OF TECHNOLOGY
MASSACHUSETTS INSTITUTE OF TECHNOLOGY

SYSTEM ADVANCED LIGO SUB-SYSTEM AOS

NEXT ASSY D1000977

PART NAME ARM CAVITY BAFFLE CTR, MIRROR SKIN

| | | | | | |
|----------|--------|-------------|------------|-------------|--------------|
| DESIGNER | M.RUIZ | 12 SEP 2011 | SIZE | DWG. NO. | REV. |
| DRAFTER | MRUIZ | 12 SEP 2011 | B | D1101796 | v1 |
| CHECKER | | | SCALE: 1:1 | PROJECTION: | SHEET 1 OF 1 |
| APPROVAL | | | | | |

8 7 6 5 4 3 2 1