

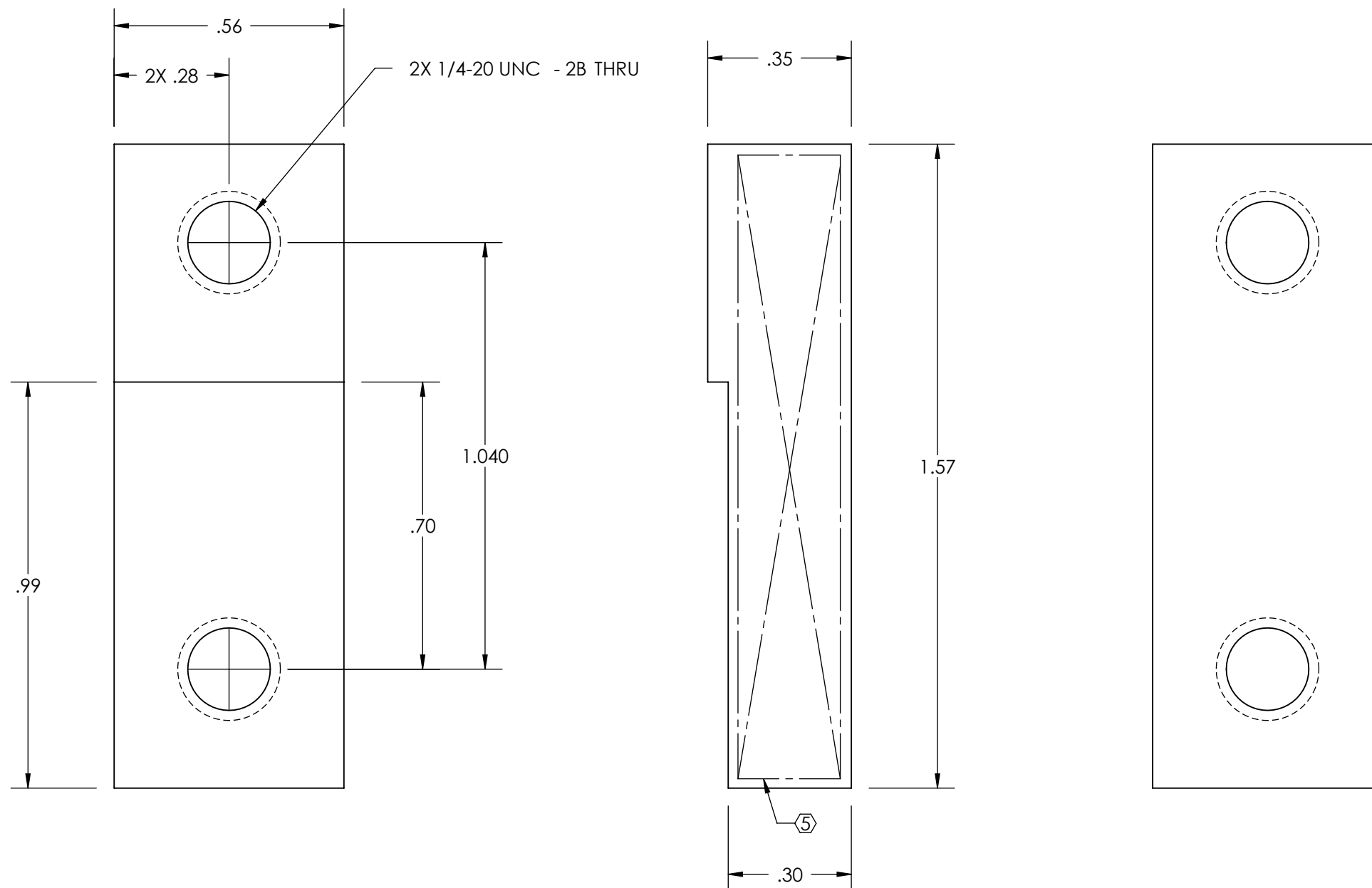
NOTES CONTINUED:

⑤ SCRIBE, ENGRAVE (A VIBRATORY TOOL MAY BE USED), LASER MARK OR MECHANICALLY STAMP (NO INKS OR DYES) DRAWING PART NUMBER, REVISION (AND VARIANT OR "TYPE" IF APPLICABLE) ON NOTED SURFACE OF PART FOLLOWED ON THE NEXT LINE WITH A THREE DIGIT SERIAL NUMBER. SERIAL NUMBERS START AT 001 FOR THE FIRST ARTICLE AND PROCEED CONSECUTIVELY. USE MINIMUM 0.12" HIGH CHARACTERS, UNLESS THE SIZE OF THE PART DICTATES SMALLER CHARACTERS. EXAMPLE: DXXXXXXXX-VY, TYPE-XX, S/N XXX

6. APPROXIMATE WEIGHT = .025 LB [11.5 G].

7. MACHINE ALL SURFACES TO REMOVE OXIDES AND MILL FINISH.

REV.	DATE	DCN #	DRAWING TREE #
v1	01 SEP 2011	E1100351	-
-	-	-	-
-	-	-	-



D1101757 aLIGO TMS Upper SUS Wire Adjuster, PART PDM REV: X-004, DRAWING PDM REV: X-000

NOTES AND TOLERANCES: (UNLESS OTHERWISE SPECIFIED)				LIGO CALIFORNIA INSTITUTE OF TECHNOLOGY MASSACHUSETTS INSTITUTE OF TECHNOLOGY		PART NAME	
DIMENSIONS ARE IN INCHES				ADVANCED LIGO		aLIGO TMS UPPER SUS WIRE ADJUSTER	
TOLERANCES: .XX ± .01 .XXX ± .003				SUB-SYSTEM AOS		DESIGNER K. MAILAND 01 SEP 2011	SIZE DWG. NO. B D1101757
ANGULAR ± 0.5°				MATERIAL 6061-T6 Al		DRAFTER C. CONLEY 01 SEP 2011	REV. v1
FINISH 63 μinch Ra				NEXT ASSY TMS TOOLING		CHECKER SEE DCN	SCALE: NONE PROJECTION:
						APPROVAL SEE DCN	SHEET 1 OF 1