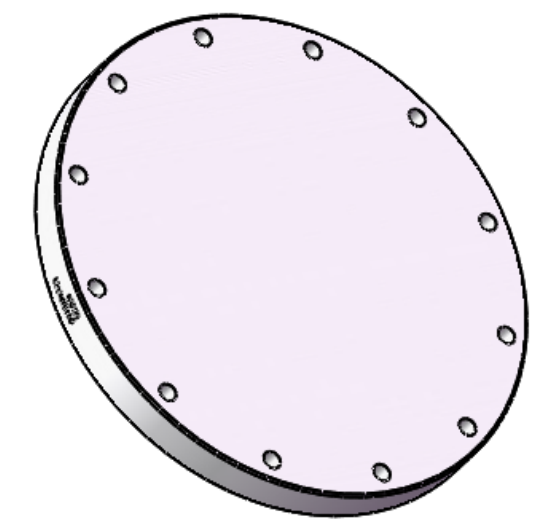
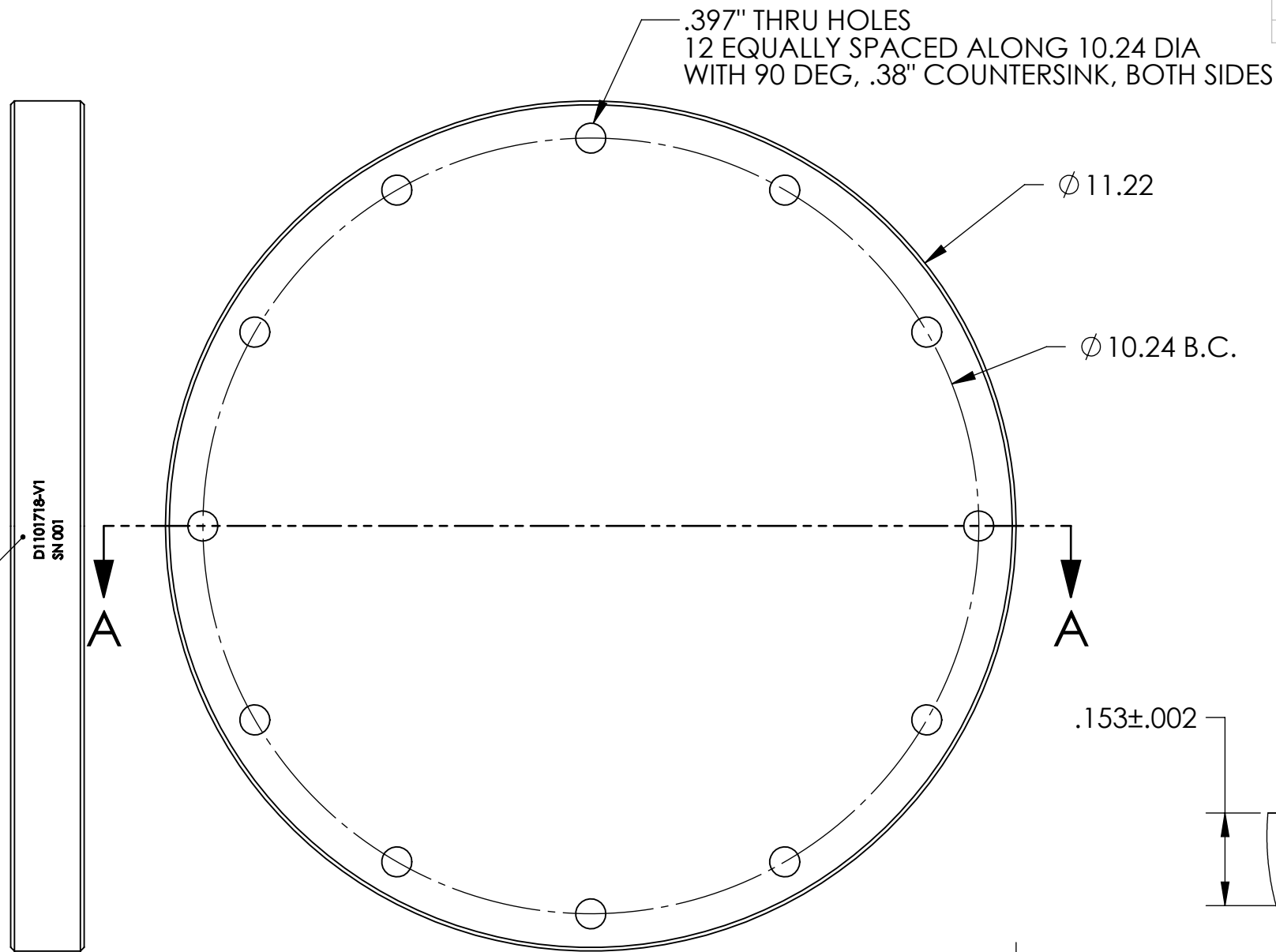


NOTES CONTINUED:
 5. SCRIBE, ENGRAVE (A VIBRATORY TOOL MAY BE USED), LASER MARK OR MECHANICALLY STAMP (NO INKS OR DYES) DRAWING PART NUMBER, REVISION (AND VARIANT OR "TYPE" IF APPLICABLE) ON NOTED SURFACE OF PART FOLLOWED ON THE NEXT LINE WITH A THREE DIGIT SERIAL NUMBER. SERIAL NUMBERS START AT 001 FOR THE FIRST ARTICLE AND PROCEED CONSECUTIVELY. USE MINIMUM 0.12" HIGH CHARACTERS, UNLESS THE SIZE OF THE PART DICTATES SMALLER CHARACTERS. EXAMPLE: DXXXXXX-VY, TYPE-XX, S/N XXX

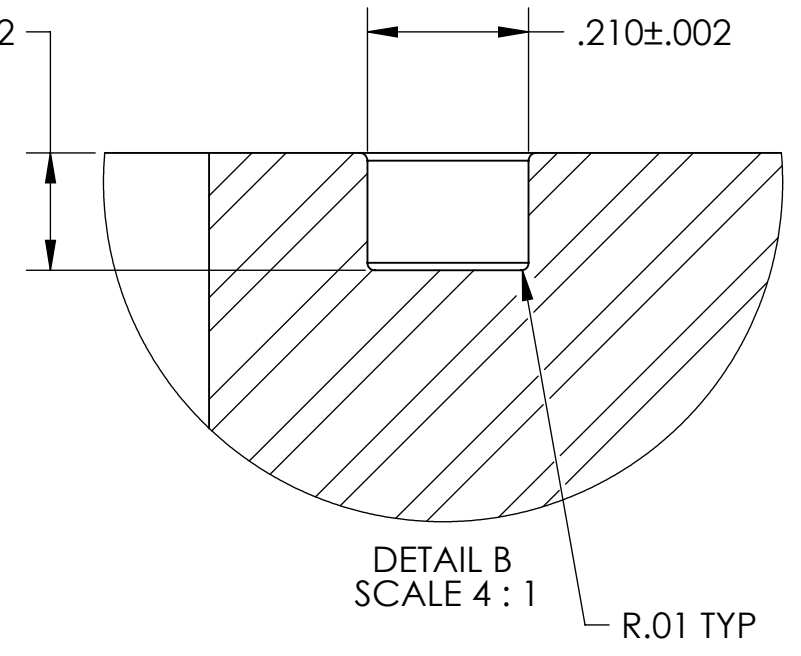
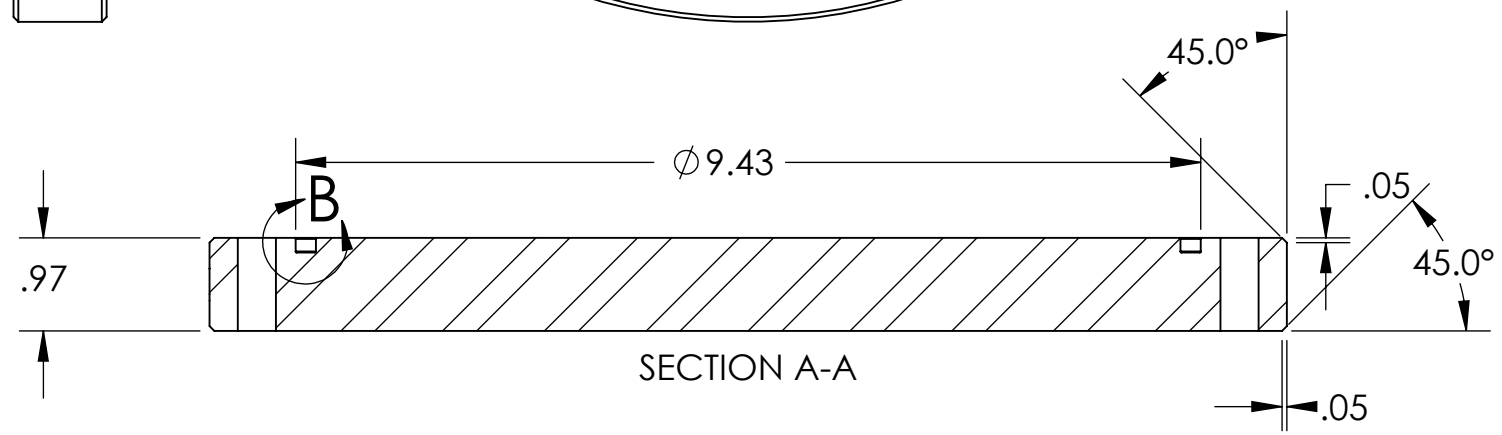
REV.	DATE	DCN #	DRAWING TREE #
VI	27 AUG 2011	E1100817-X0	NA
-	-	-	-

- 6. APPROXIMATE WEIGHT = 27 LB.
- 7. MACHINE ALL SURFACES TO REMOVE OXIDES AND MILL FINISH. USE OF ABRASIVE REMOVAL TECHNIQUES IS NOT ALLOWED. REFER TO LIGO-E0900364
- 8. ALL PARTS SHALL BE MANUFACTURED IN ACCORDANCE WITH LIGO SPECIFICATION E0900364, OR VACUUM EQUIPMENT MANUFACTURER'S SPECIFICATION IF APPROVED BY LIGO.
- 9. ALL MATERIAL IS TO BE VIRGIN MATERIAL (i.e. NO WELD REPAIRS, PLUGS OR RECYCLED MATERIAL). NO REPAIRS SHALL BE MADE UNLESS APPROVED IN ADVANCE, AND IN WRITING, BY LIGO LABORATORY. REFER TO LIGO-E0900364.



MARK PART NUMBER & SERIAL NUMBER ON THIS EDGE. SEE NOTE 5

D1101718-VI
SN 001



D1101718 aLIGO Septum Viewport Blank, PART PDM REV: X-000, DRAWING PDM REV: X-002

NOTES AND TOLERANCES: (UNLESS OTHERWISE SPECIFIED)	
DIMENSIONS ARE IN INCHES	
TOLERANCES: .XX ± .03 .XXX ± .010 ANGULAR ± 1.0°	
MATERIAL	FINISH
AISI 304	63 Raµinch

CALIFORNIA INSTITUTE OF TECHNOLOGY MASSACHUSETTS INSTITUTE OF TECHNOLOGY	PART NAME
	aLIGO Septum Viewport Blank
SYSTEM	SUB-SYSTEM
AOS	SLC
NEXT ASSY	
NA	

DESIGNER	Dennis Coyne	9 JUN 2011	SIZE	DWG. NO.	REV.
DRAFTER	Dennis Coyne	27 Aug 2011	B	D1101718	v1
CHECKER	Mike Smith	29 Aug 2011	SCALE: 1:2	PROJECTION:	SHEET 1 OF 1
APPROVAL	see DCN	see DCN			