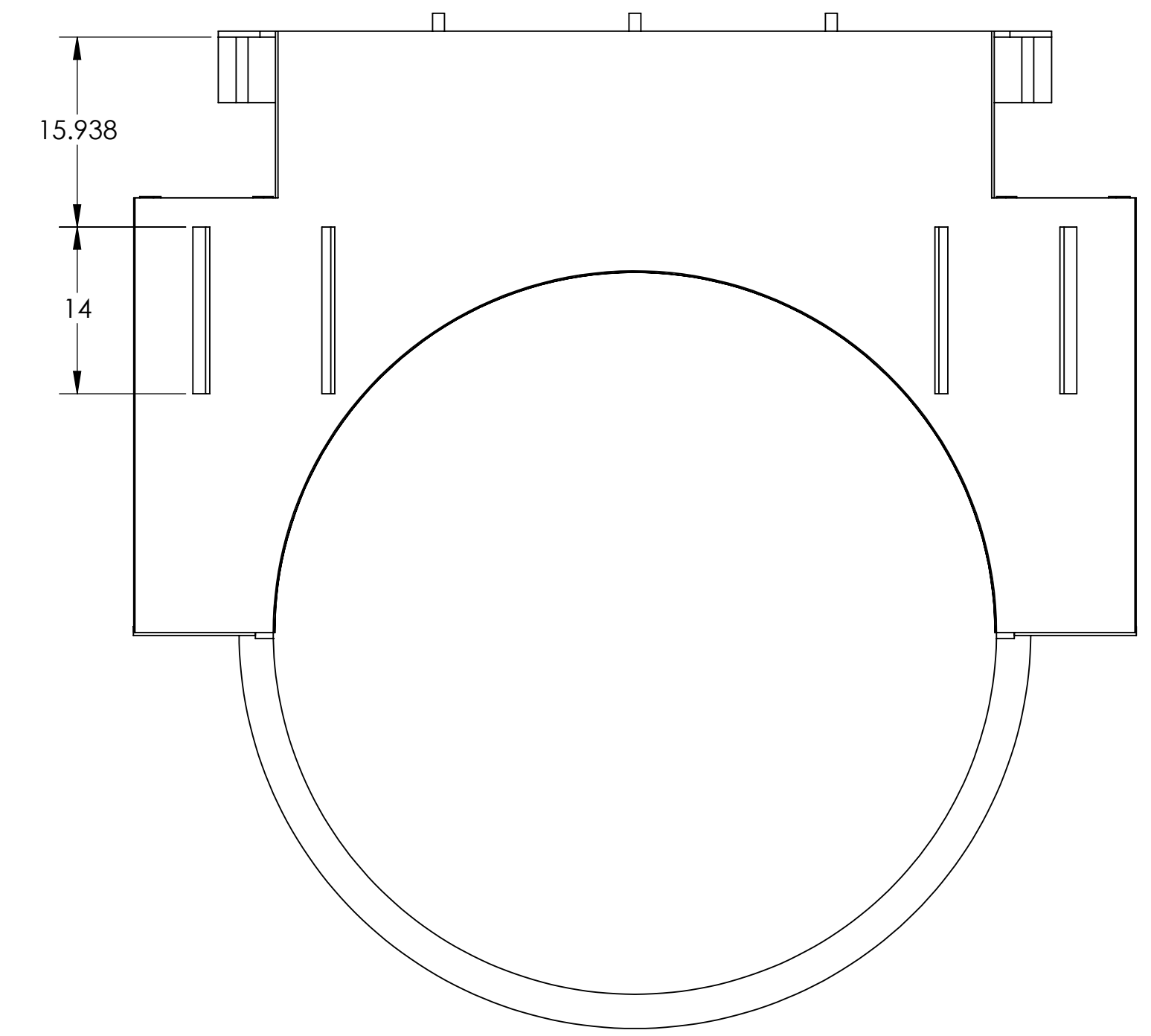
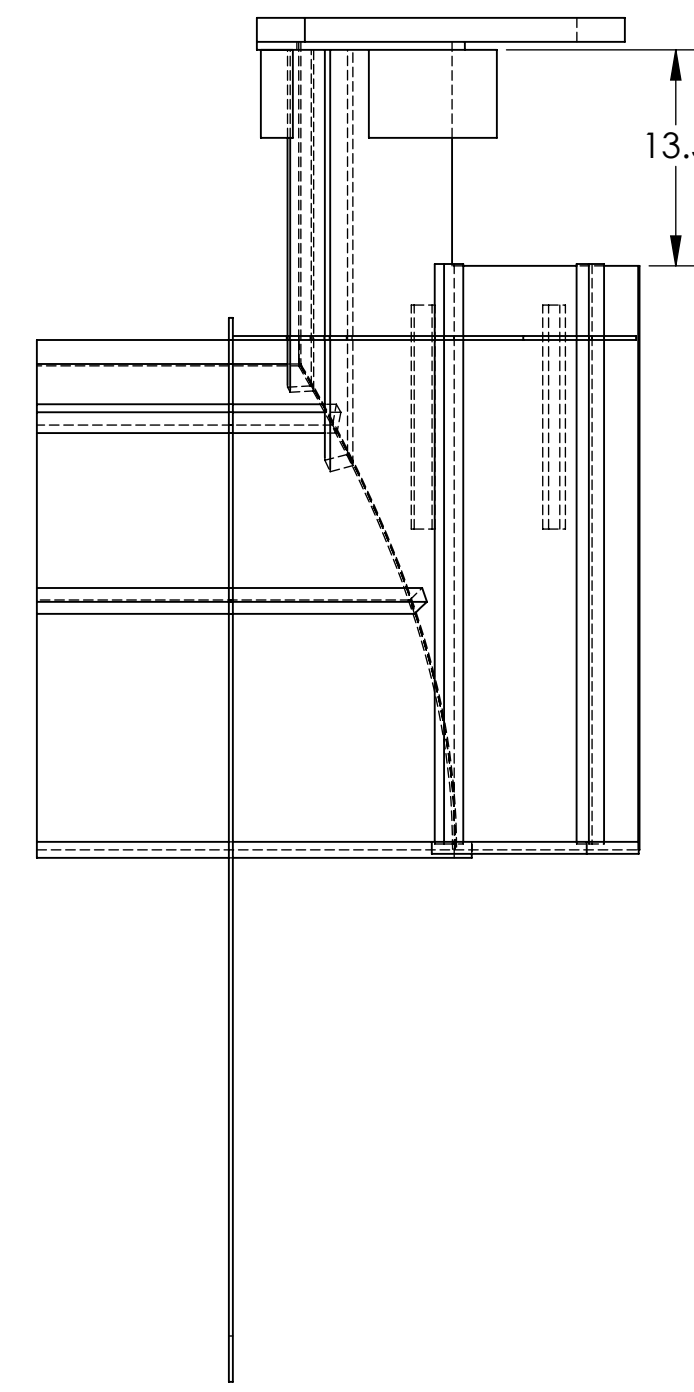
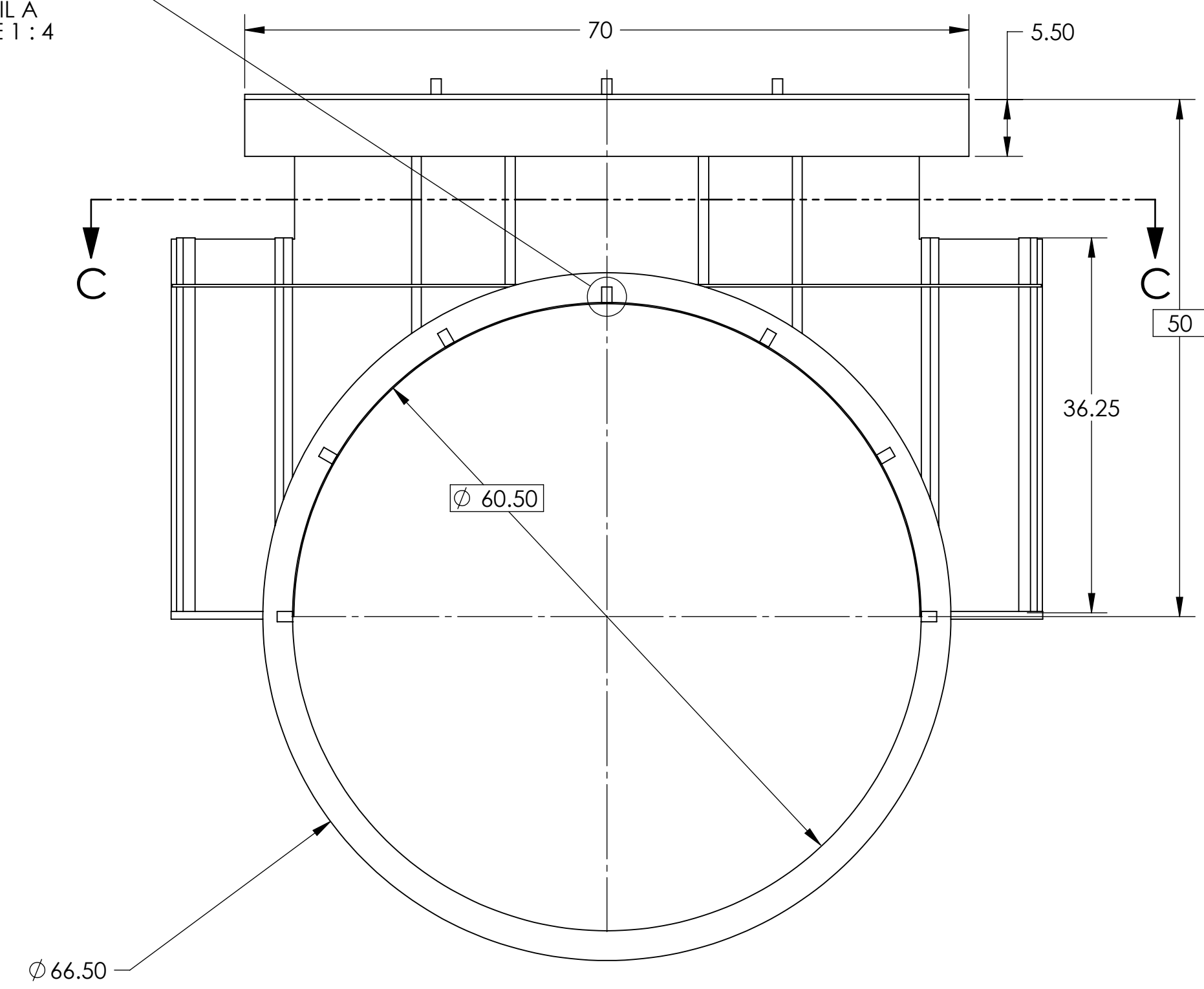
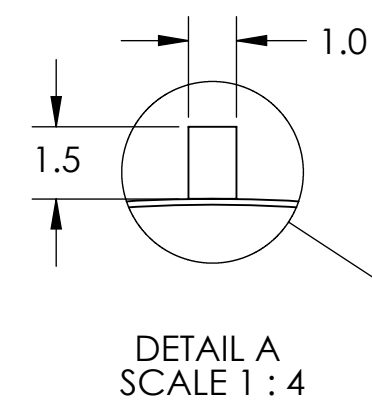
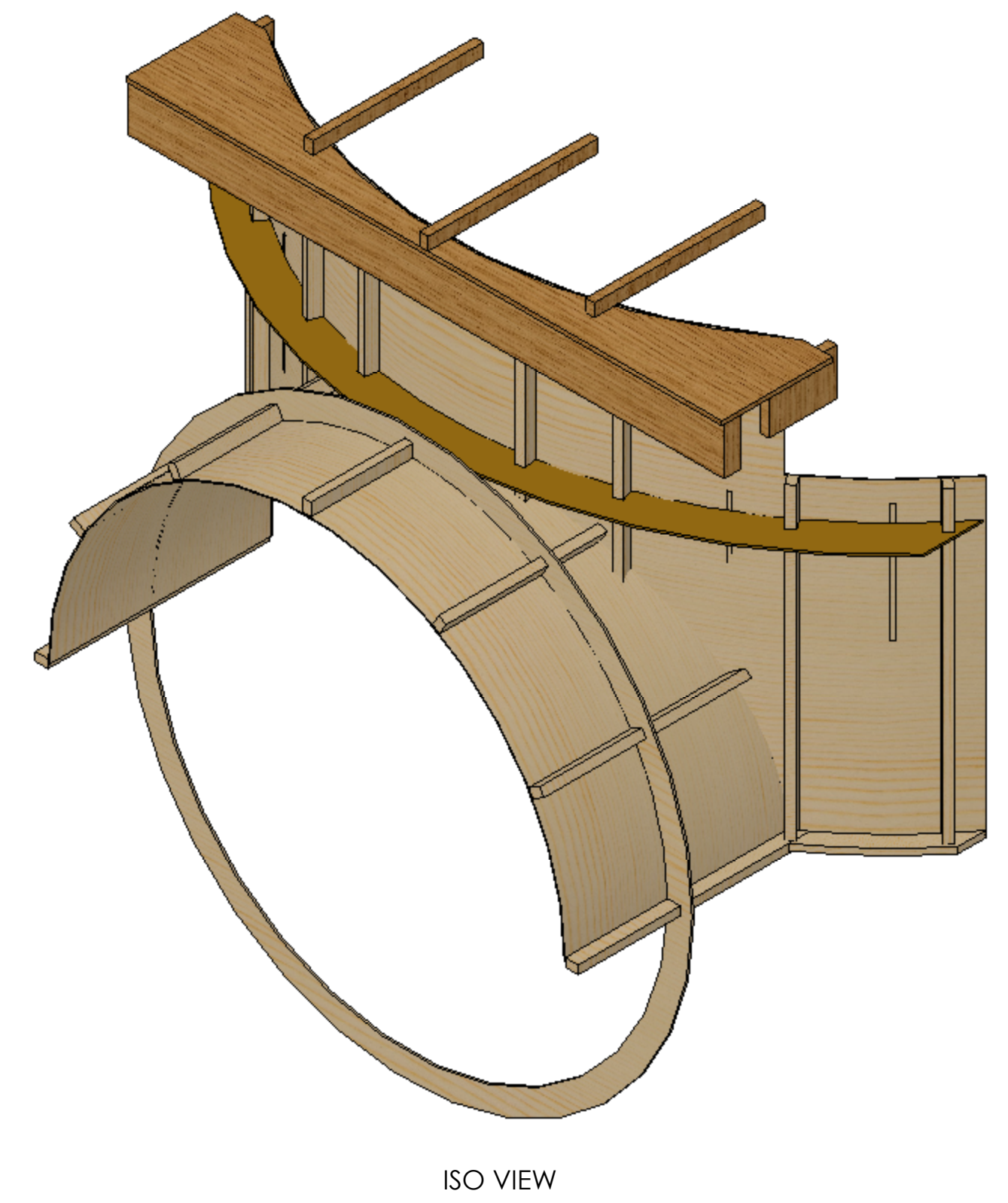
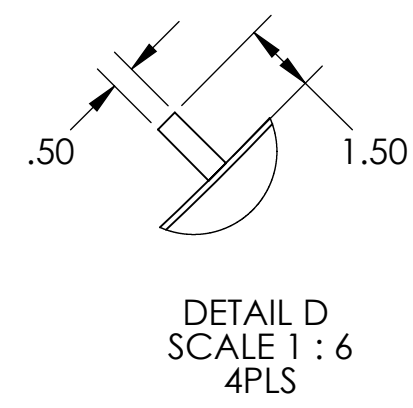
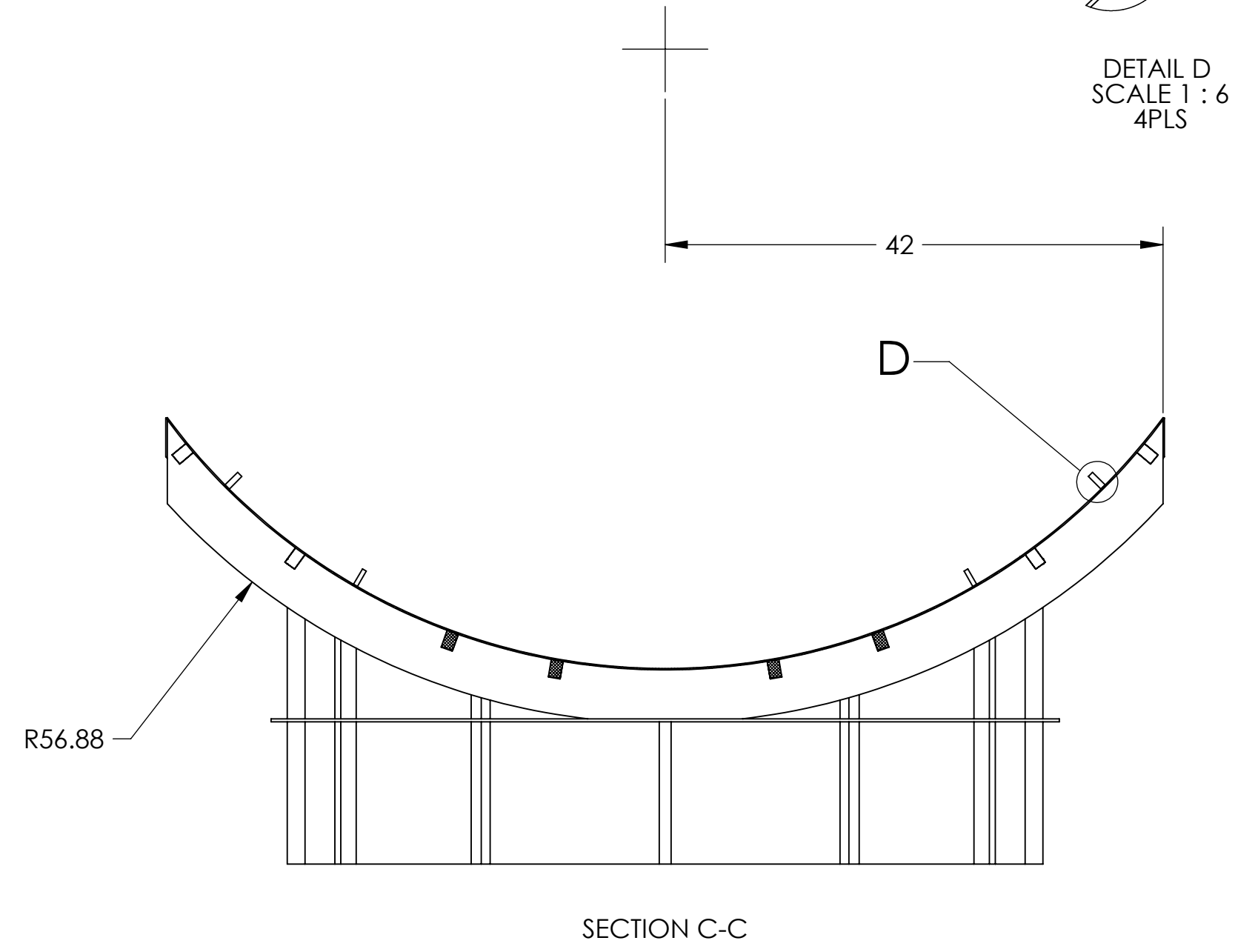
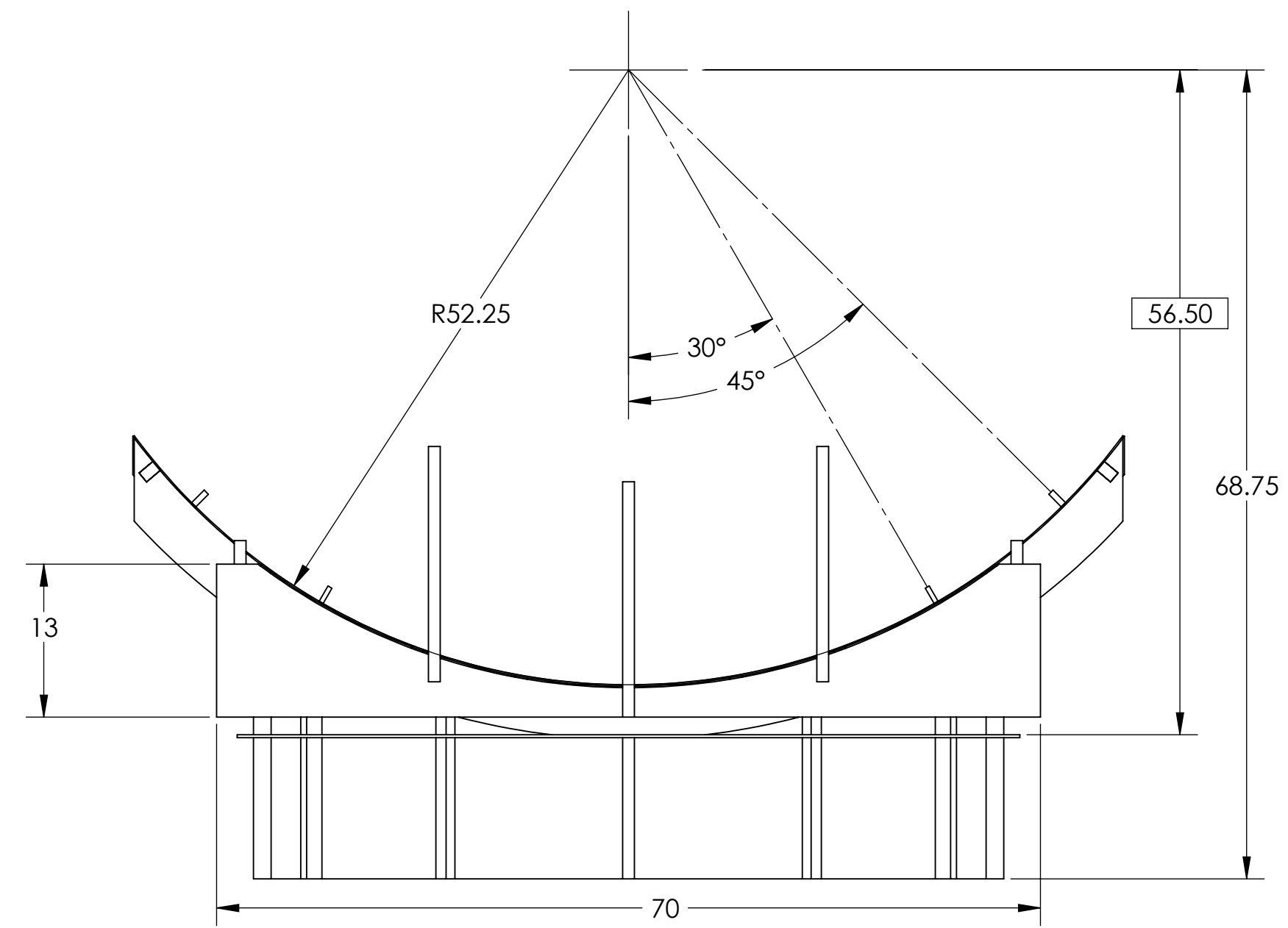


NOTES CONTINUED:
 ⑤ 3/8-16 THREADED TEE NUT
 QUANTITY: 5 PCS

REV.	DATE	DCN #	DRAWING TREE #
-	-	-	-
-	-	-	-
-	-	-	-



DIMENSIONS ARE IN		NOTES AND TOLERANCES: (UNLESS OTHERWISE SPECIFIED)		CALIFORNIA INSTITUTE OF TECHNOLOGY MASSACHUSETTS INSTITUTE OF TECHNOLOGY		PART NAME		
TOLERANCES: .XX ± .XXX ±		1. INTERPRET DRAWING PER ASME Y14.5-1994. 2. REMOVE ALL SHARP EDGES, .005-.015, FOR MACHINED PARTS. ROUND ALL EDGES APPROXIMATELY R.02 FOR SHEET METAL PARTS. 3. DO NOT SCALE FROM DRAWING. 4. ALL MACHINING FLUIDS MUST BE FULLY SYNTHETIC, FULLY WATER SOLUBLE AND FREE OF SULFUR, SILICONE, AND CHLORINE.		SYSTEM ADVANCED LIGO		SUB-SYSTEM AOS		ARM CAVITY BAFFLE MOCK-UP
ANGULAR ± °		MATERIAL		NEXT ASSY		DESIGNER TQ. NGUYEN 3 AUG 2011 SIZE DWG. NO.		REV.
		N/A		N/A μinch		DRAFTER TQ. NGUYEN 12 AUG 2011 D D1101563		v1
						CHECKER L. AUSTIN		SCALE: 1:12 PROJECTION:
						APPROVAL C. TORRIE		SHEET 1 OF 1

D:\101563_d1101563_arm_cavity_baffle_mock-up_BEC B PART PDM REV: X:000 DRAWING PDM REV: X:001