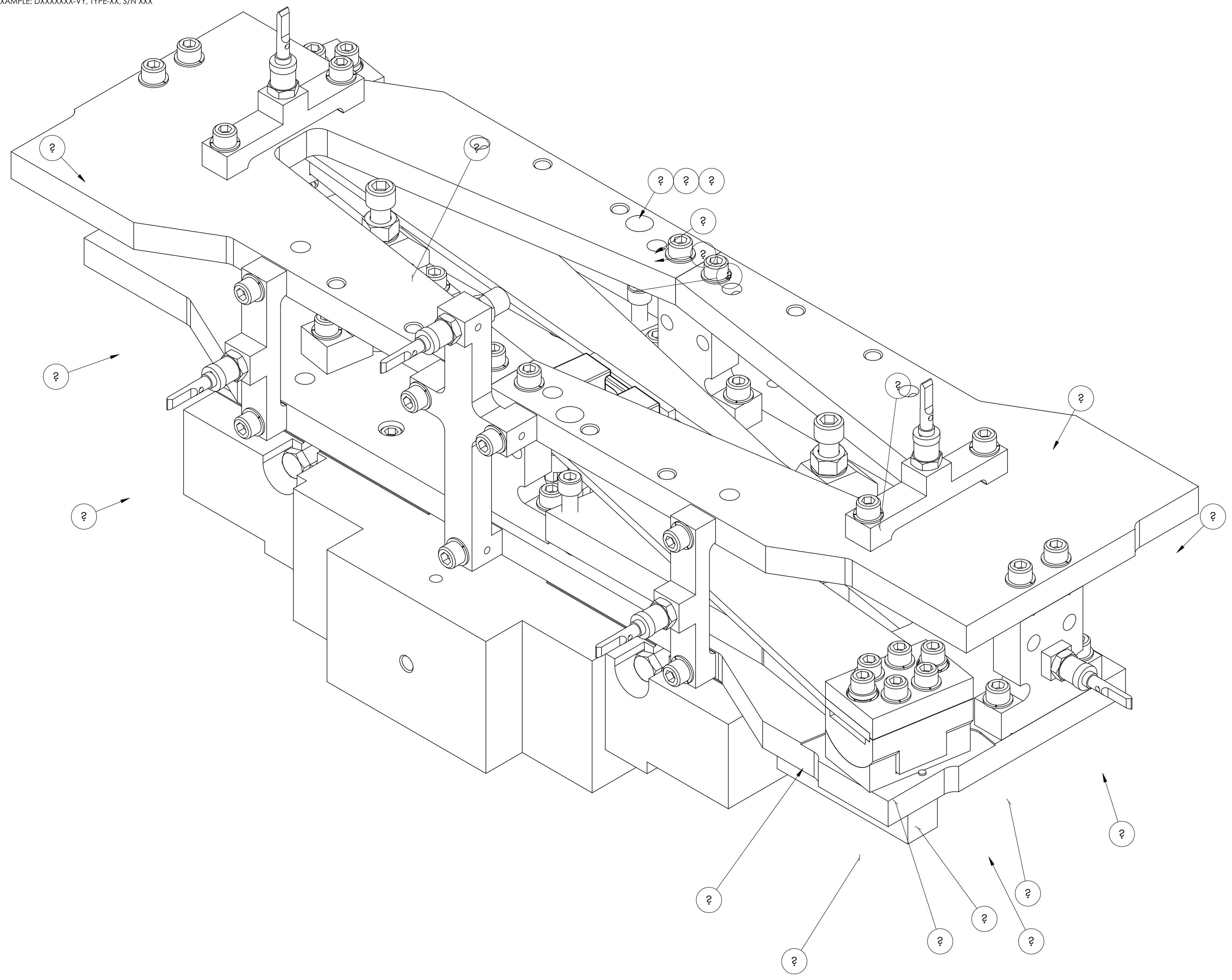


NOTES CONTINUED:  
 ⑤ SCRIBE, ENGRAVE (A VIBRATORY TOOL MAY BE USED), LASER MARK OR MECHANICALLY STAMP (NO INKS OR DYES) DRAWING PART NUMBER, REVISION (AND VARIANT OR 'TYPE' IF APPLICABLE) ON NOTED SURFACE OF PART FOLLOWED ON THE NEXT LINE WITH A THREE DIGIT SERIAL NUMBER. SERIAL NUMBERS START AT 001 FOR THE FIRST ARTICLE AND PROCEED CONSECUTIVELY. USE MINIMUM 0.12" HIGH CHARACTERS, UNLESS THE SIZE OF THE PART DICTATES SMALLER CHARACTERS. EXAMPLE: DXXXXXX-VY, TYPE-XX, S/N XXX



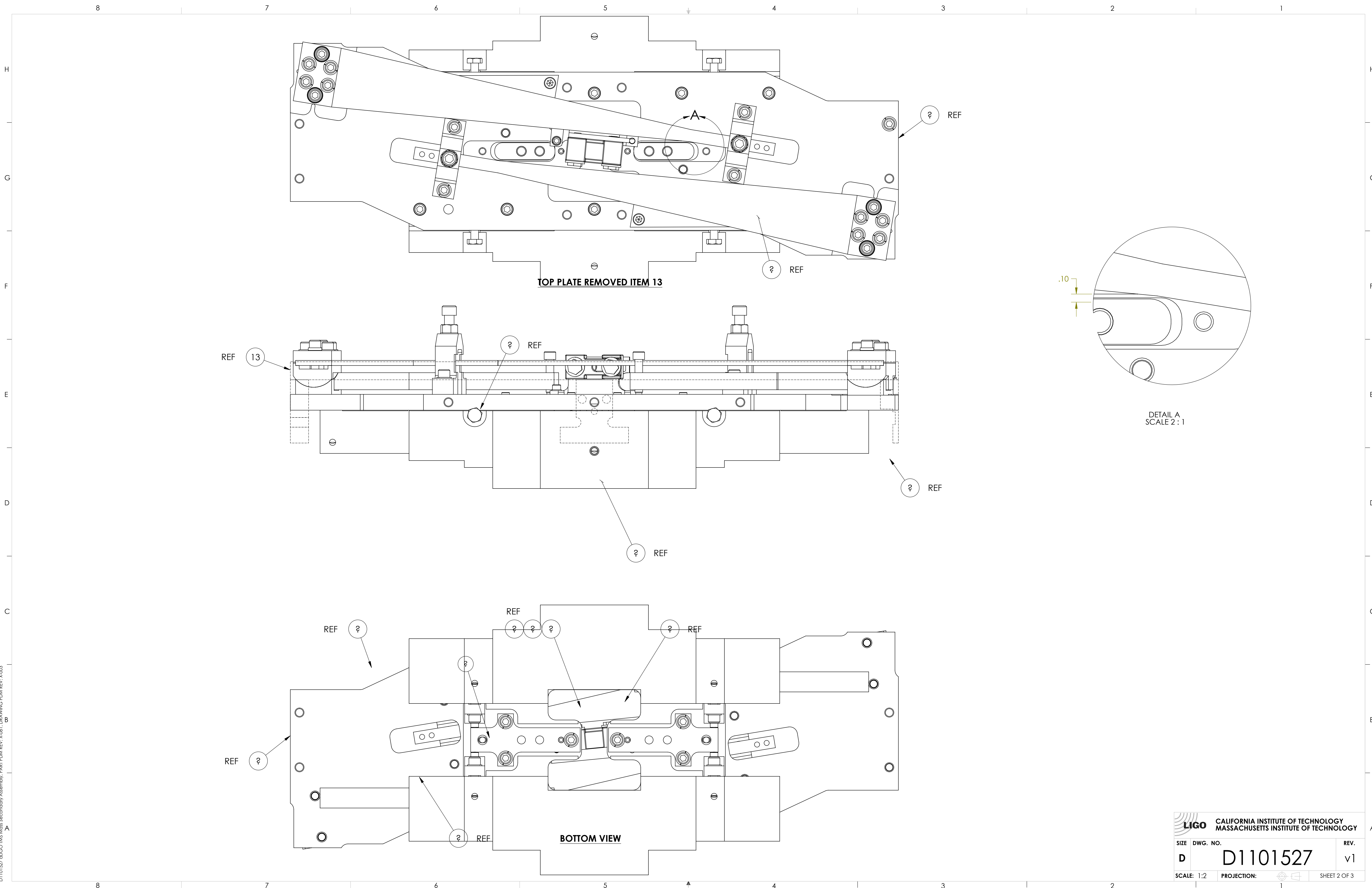
REV.	DATE	DCN #	DRAWING TREE #
v1	26 MAR 2012	E1101214	-
-	-	-	-
-	-	-	-

ITEM NO.	PART NUMBER	REV	DESCRIPTION	MATERIAL	REQ	SPARE	TOTAL
15	DCNI 01888/N		SINTERED NdFeB MAGNET, NI-PLATED, 10 mm X 10 mm (MMG MAGDEV P/N OR EQUIVALENT)	NEO 35 (NdFeB)	2		2
14	D1001534	v1	MAGNETIC PLUG	416 SSSL	2		2
13	D1001697	v1	MAGNET RETAINER, BOSEM	316 SSSL	2		2
12	D1200328	v1	alphaLIGO SUS BOSEM FLAG CENTER BRACKET	6061-T6 Al	1		1
11	D1001695	v2	MAGNET AND FLAG ASSY, BOSEM	N/A	6		6
10	D1200327	v1	alphaLIGO SUS BOSEM FLAG BRACKET	6061-T6 Al	4		4
9	D1101511	v1	alphaLIGO TMS INTERMEDIATE MASS TOP PLATE	304 SSSL	2		2
8	-		SCREW, SOCKET HEAD CAP, #8-32 UNC-2A X 0.375 LONG	300 SSSL	2		2
7	#8 VENT FL WSHR		.169 ID, .304 OD, .032 TH	18-8 SSSL	2		2
6	D1200421	v1	alphaLIGO TMS MASS CABLE CLAMP ASSEMBLY	N/A	1		1
5	D1000395	v1	alphaLIGO INTERMEDIATE TOP MASS SPACER	304 SSSL	3		3
4	-		SCREW, SOCKET HEAD CAP, 1/4-20 UNC-2A X 1 LONG	Ag-PLATED 300 SSSL	27		27
3	.250 VENT FL WSHR		.255 ID, .468 OD, .032 TH	18-8 SSSL	27		27
2	D1200356	v1	alphaLIGO TMS MASS SPACER	6061-T6 Al	1		1
1	D1200525	v1	alphaLIGO TMS MASS BASE ASSEMBLY	N/A	1		1

NOTES AND TOLERANCES: (UNLESS OTHERWISE SPECIFIED)	
1. INTERPRET DRAWING PER ASME Y14.5-1994. 2. REMOVE ALL SHARP EDGES, R.02 MIN. 3. DO NOT SCALE FROM DRAWING. 4. ALL MACHINING FLUIDS MUST BE FULLY SYNTHETIC, FULLY WATER SOLUBLE AND FREE OF SULFUR, SILICONE, AND CHLORINE.	
DIMENSIONS ARE IN INCHES	
TOLERANCES: .XX ± .01 .XXX ±	
ANGULAR ± °	
MATERIAL	N/A
FINISH	N/A μinch

CALIFORNIA INSTITUTE OF TECHNOLOGY MASSACHUSETTS INSTITUTE OF TECHNOLOGY		<b>PART NAME</b> alphaLIGO TMS MASS SECONDARY ASSEMBLY	
<b>SYSTEM</b> ADVANCED LIGO	<b>SUB-SYSTEM</b> AOS	<b>DESIGNER</b> K. MAILAND	<b>DATE</b> 28 FEB 2012
<b>CHECKER</b> SEE DCN	<b>APPROVAL</b> SEE DCN	<b>SIZE</b> D	<b>DWG. NO.</b> D1101527
<b>REVISION</b> v1	<b>SCALE</b> 1:2	<b>PROJECTION</b> 	<b>SHEET 1 OF 3</b>

D1101527 alphaLIGO TMS Mass Secondary Assembly, PART PDM REV: X-081, DRAWING PDM REV: X-003



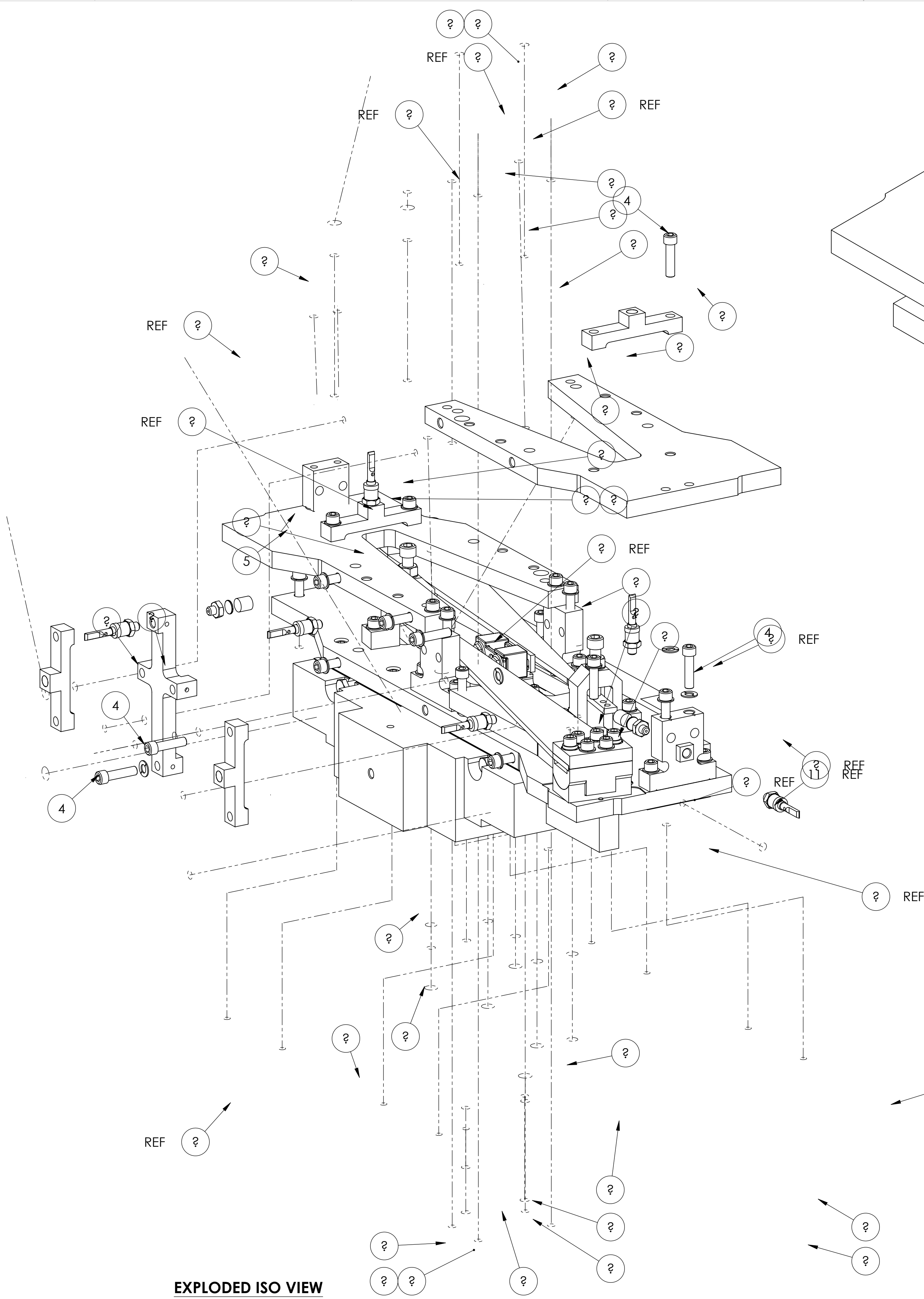
D:\101527.dwg LIGO TMS Mass Secondary Assembly PART PDM REV-X-081 DRAWING PDM REV-X-003

CALIFORNIA INSTITUTE OF TECHNOLOGY MASSACHUSETTS INSTITUTE OF TECHNOLOGY		REV.
SIZE	DWG. NO.	REV.
D	D1101527	v1
SCALE: 1:2	PROJECTION:	SHEET 2 OF 3

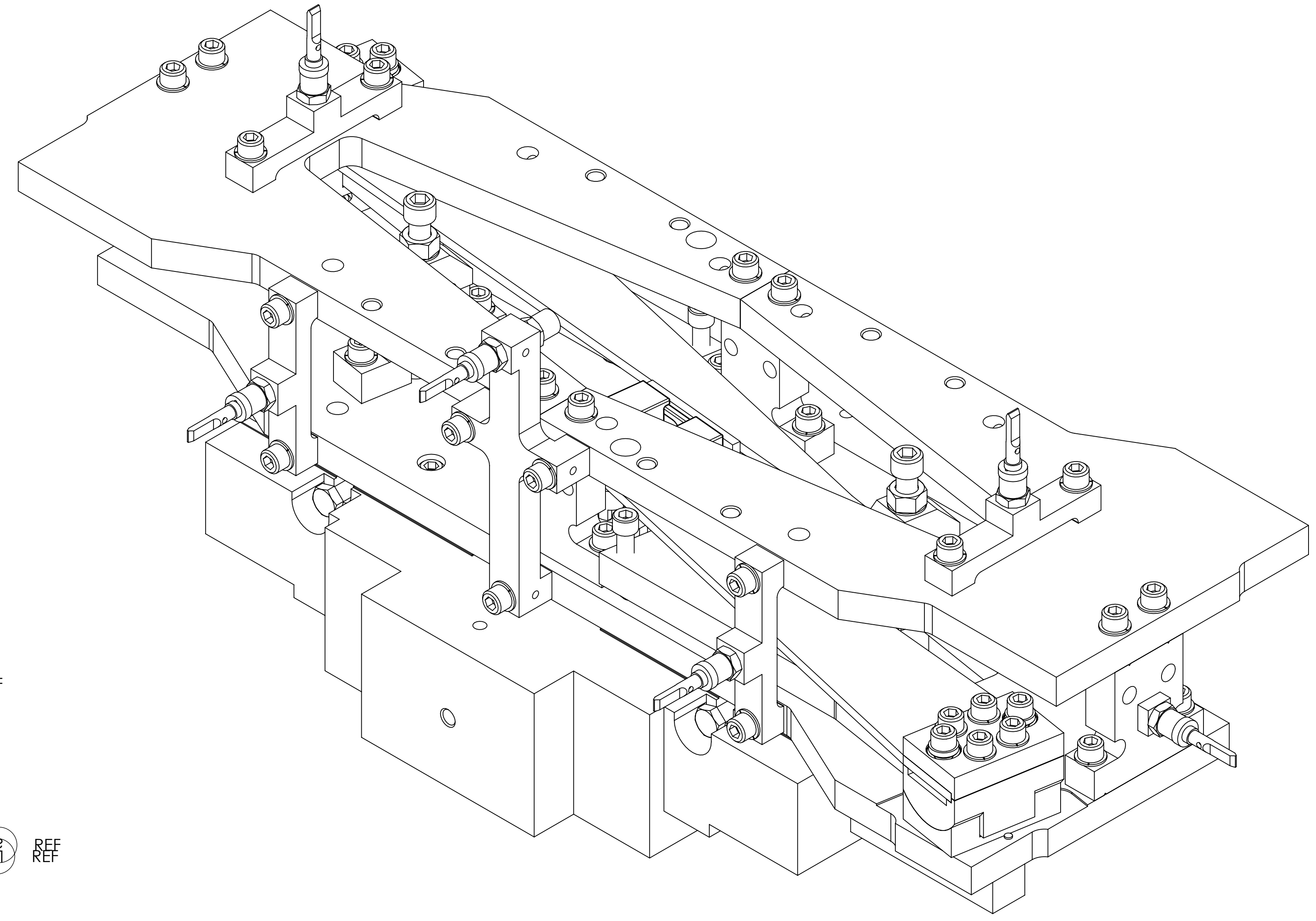
8 7 6 5 4 3 2 1

H  
G  
F  
E  
D  
C  
B  
A

H  
G  
F  
E  
D  
C  
B  
A



**EXPLODED ISO VIEW**



**ASSEMBLED ISO VIEW**

<b>LIGO</b> CALIFORNIA INSTITUTE OF TECHNOLOGY MASSACHUSETTS INSTITUTE OF TECHNOLOGY	
SIZE DWG. NO.	REV.
<b>D</b> <b>D1101527</b>	<b>v1</b>
SCALE: 1:2	PROJECTION:
SHEET 3 OF 3	

D:\101527.dwg TMS Mass Secondary Assembly PART PDM REV-X-081 DRAWING PDM REV-X-003

8 7 6 5 4 3 2 1