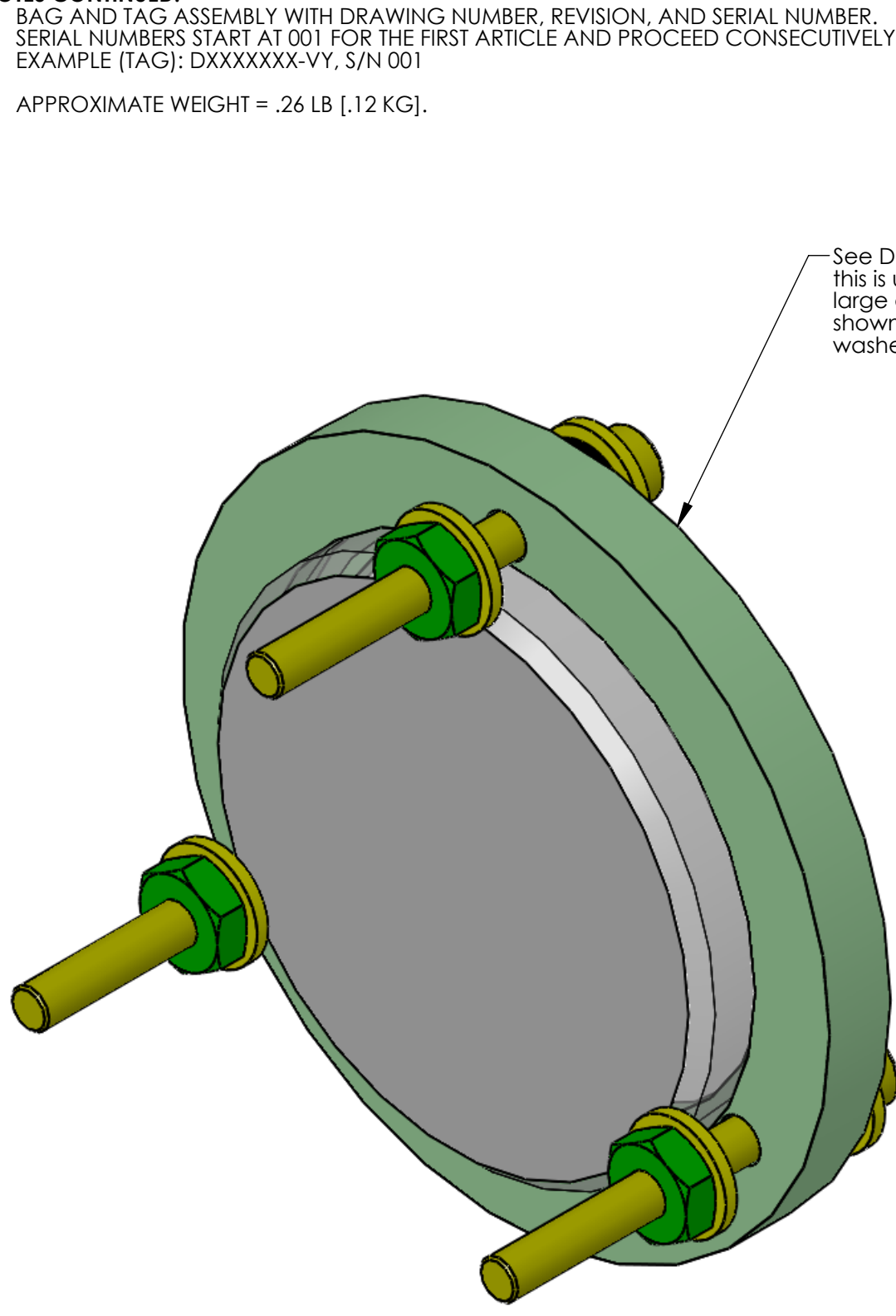


**NOTES CONTINUED:**

- 5. BAG AND TAG ASSEMBLY WITH DRAWING NUMBER, REVISION, AND SERIAL NUMBER. SERIAL NUMBERS START AT 001 FOR THE FIRST ARTICLE AND PROCEED CONSECUTIVELY. EXAMPLE (TAG): DXXXXXXX-VY, S/N 001
- 6. APPROXIMATE WEIGHT = .26 LB [.12 KG].

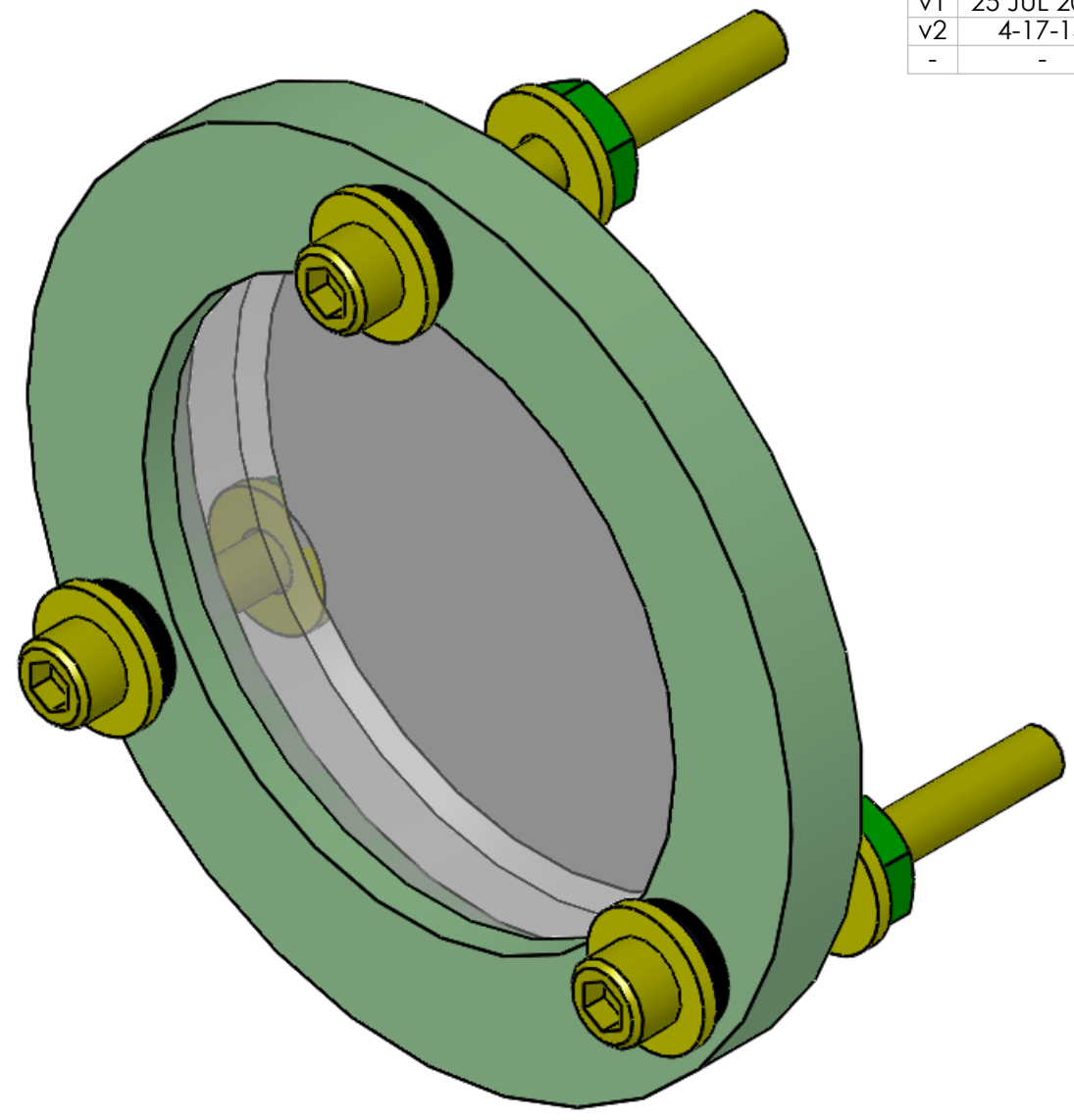
REV.	DATE	DCN #	BOM #
v1	25 JUL 2011	E1100351	E1100695-v1
v2	4-17-13	to follow	E1100695-v2
-	-	-	-

D1101487 TMS Tooling Telescope O-P Alignment Mirror Assembly, PART PDM REV: X-052, DRAWING PDM REV: X-012



**BACK ISO VIEW**

See D1101361  
this is used in the  
large disk, not as  
shown with nuts and  
washers



**ISO VIEW**

ITEM NO.	PART NUMBER	REV	DESCRIPTION	MATERIAL	REQ	SPARE	TOTAL
6	N-832-A (U-C COMPONENTS) or equiv		HEX NUT, #8-32	Ag-PLATED 300 SSSL	3	3	6
5	92196A203 (McM-Carr) or equiv		SCREW, SOCKET HEAD CAP, #8-32 UNC-2A X 1.5 LONG	300 SSSL	3	2	5
4	98019A326 (McM-Carr) or equiv PER MS15795-841		FLAT WASHER .198 I.D., .438 O.D., .049 THICK	300 SSSL	6	3	9
3	AS568A-106		O-RING, 3/32" WIDTH, 3/16" I.D. APPROVED VITON ELASTOMER, SHORE A 70-75	FLURO-ELASTOMER	3	3	6
2	D1100897	v1	LIGO TMS TOOLING TELESCOPE MIRROR CLAMP, 56 MM	6061-T6 Al	1	-	1
1	D1100949	v1	TMS TELESCOPE TOOLING MIRROR, 56 MM	FUSED SILICA	1	-	1

**PARTS LIST**

**NOTES AND TOLERANCES: (UNLESS OTHERWISE SPECIFIED)**

DIMENSIONS ARE IN INCHES

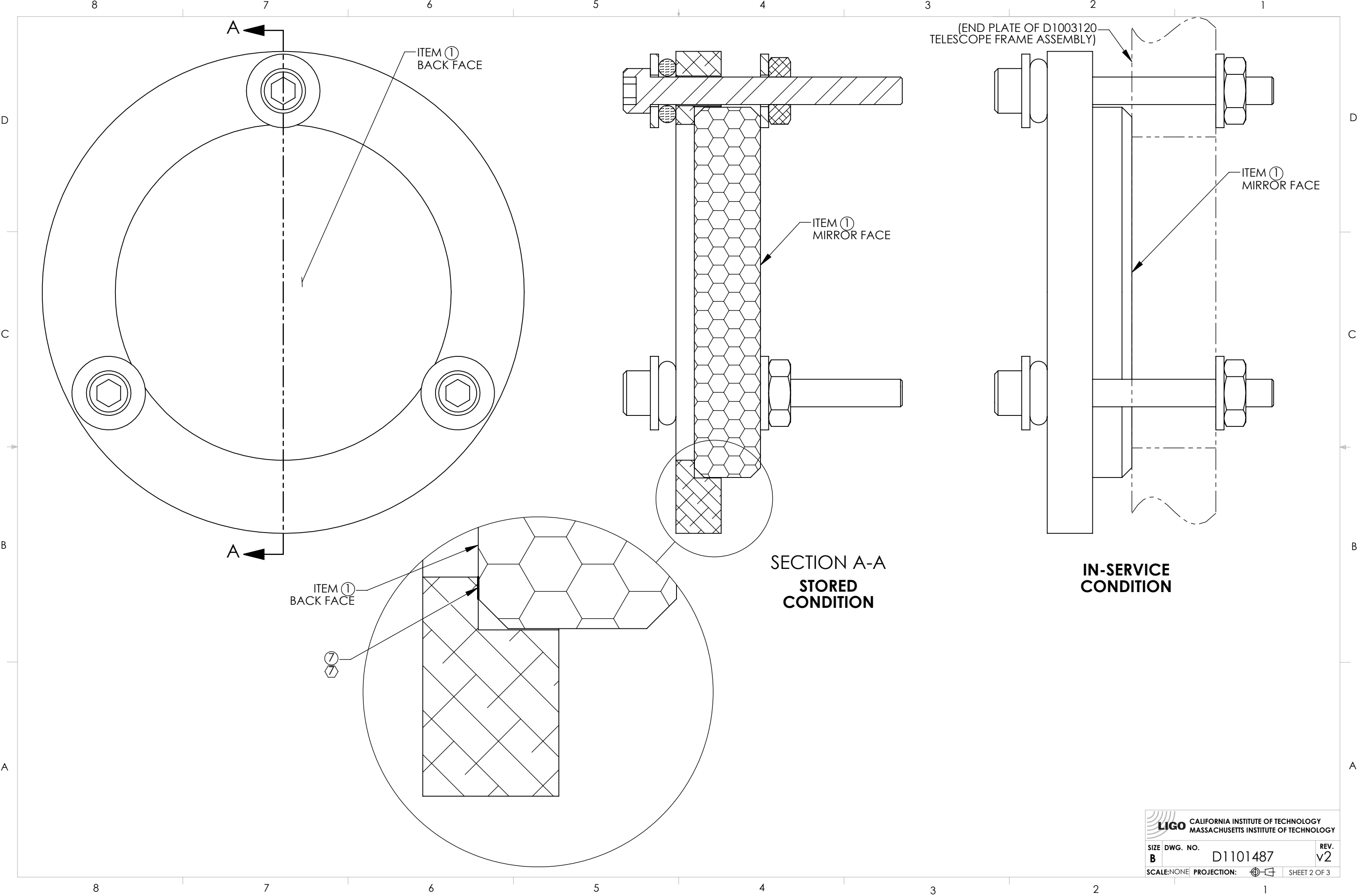
TOLERANCES:  
.XX ± .01  
.XXX ± .005  
ANGULAR ± 1.0°

1. INTERPRET DRAWING PER ASME Y14.5-1994.  
2. REMOVE ALL SHARP EDGES, .005-.015, FOR MACHINED PARTS. ROUND ALL EDGES APPROXIMATELY R.02 FOR SHEET METAL PARTS.  
3. DO NOT SCALE FROM DRAWING.  
4. ALL MACHINING FLUIDS MUST BE FULLY SYNTHETIC, FULLY WATER SOLUBLE AND FREE OF SULFUR, SILICONE, AND CHLORINE.

MATERIAL	N/A	FINISH	N/A μinch
----------	-----	--------	-----------

CALIFORNIA INSTITUTE OF TECHNOLOGY MASSACHUSETTS INSTITUTE OF TECHNOLOGY		<b>PART NAME</b> TMS TOOLING TELESCOPE O-P ALIGNMENT MIRROR ASSEMBLY	
<b>SYSTEM</b> ADVANCED LIGO <b>NEXT ASSY</b> D1101361	<b>SUB-SYSTEM</b> AOS	<b>DESIGNER</b> K. MAILAND <b>DRAFTER</b> C. CONLEY <b>CHECKER</b> SEE DCN <b>APPROVAL</b> SEE DCN	<b>DATE</b> 22 JUL 2011 <b>DATE</b> 25 JUL 2011 <b>DATE</b> SEE DCN <b>DATE</b> SEE DCN
<b>SCALE:</b> NONE <b>PROJECTION:</b>		<b>SIZE DWG. NO.</b> B D1101487	
		<b>REV.</b> v2	
		SHEET 1 OF 3	

D1101487 TMS Tooling Telescope O-P Alignment Mirror Assembly, PART PDM REV: X-052, DRAWING PDM REV: X-012



ITEM 1  
BACK FACE

ITEM 1  
BACK FACE

ITEM 1  
MIRROR FACE

ITEM 1  
MIRROR FACE

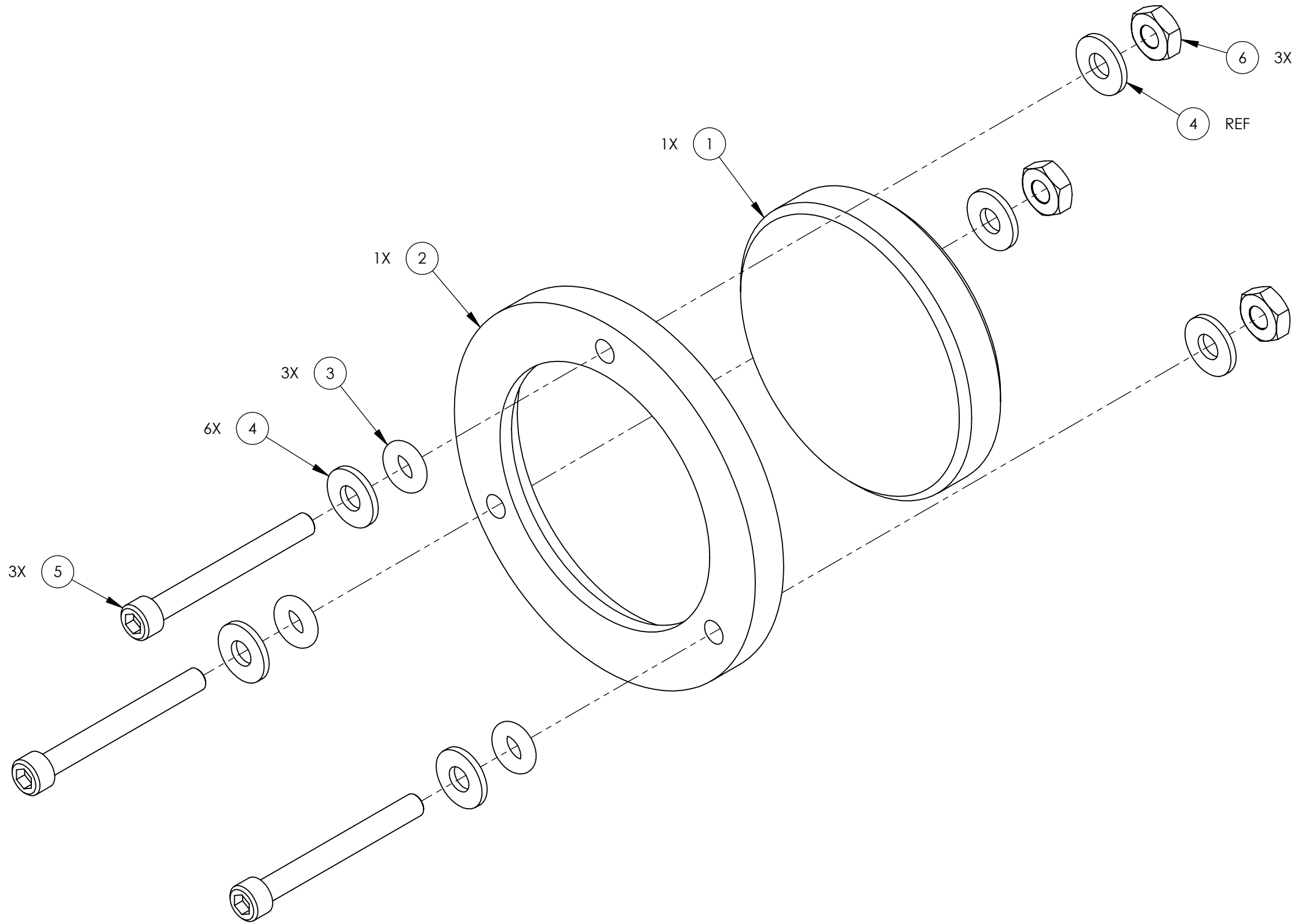
SECTION A-A  
STORED  
CONDITION


IN-SERVICE  
CONDITION

**LIGO** CALIFORNIA INSTITUTE OF TECHNOLOGY  
MASSACHUSETTS INSTITUTE OF TECHNOLOGY

SIZE	DWG. NO.	REV.
B	D1101487	v2
SCALE: NONE		PROJECTION:
		SHEET 2 OF 3

D1101487 TMS Tooling Telescope O-P Alignment Mirror Assembly, PART PDM REV: X-052, DRAWING PDM REV: X-012



 CALIFORNIA INSTITUTE OF TECHNOLOGY MASSACHUSETTS INSTITUTE OF TECHNOLOGY		
SIZE	DWG. NO.	REV.
<b>B</b>	D1101487	v2
SCALE: NONE	PROJECTION:	SHEET 3 OF 3