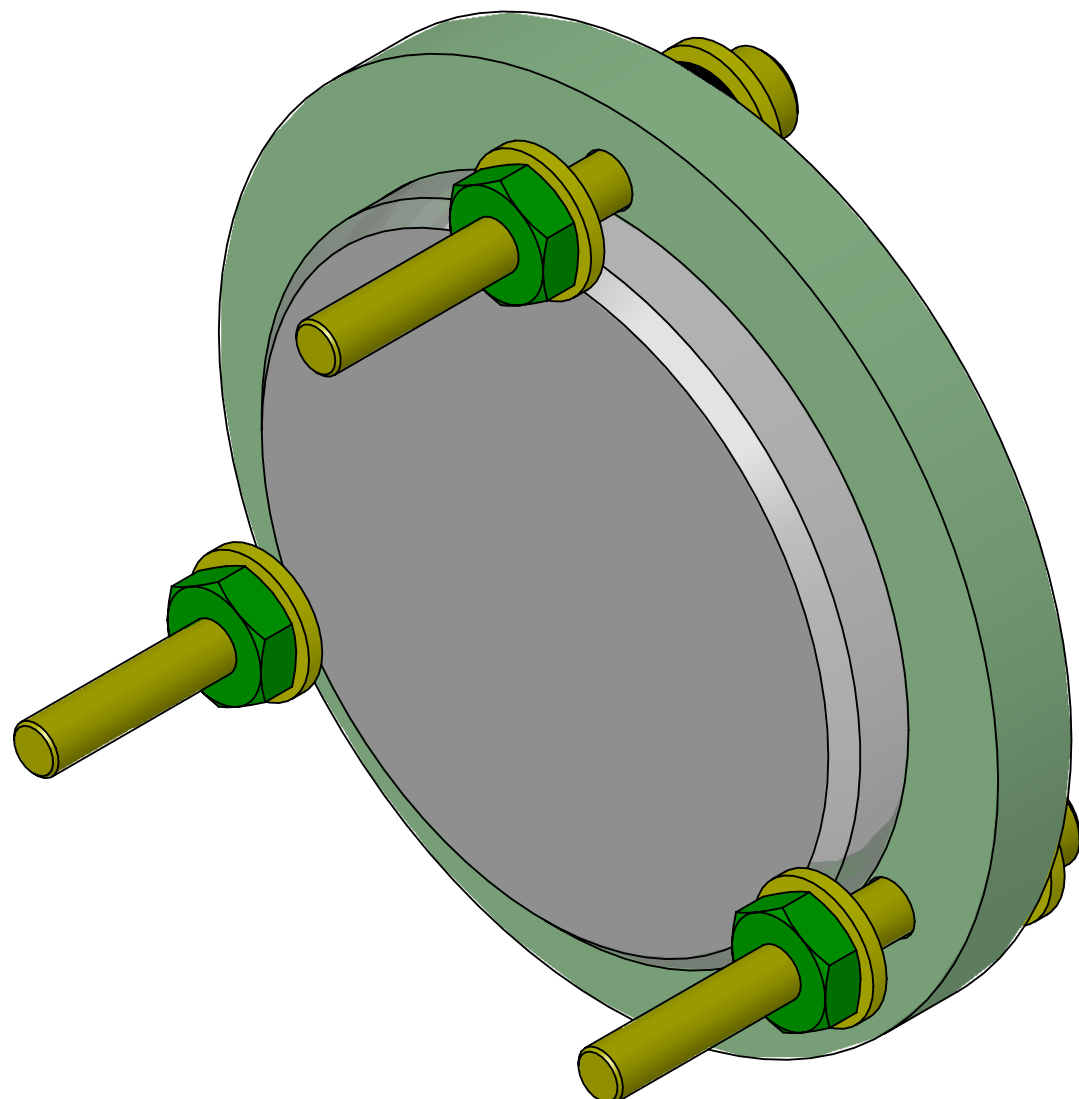


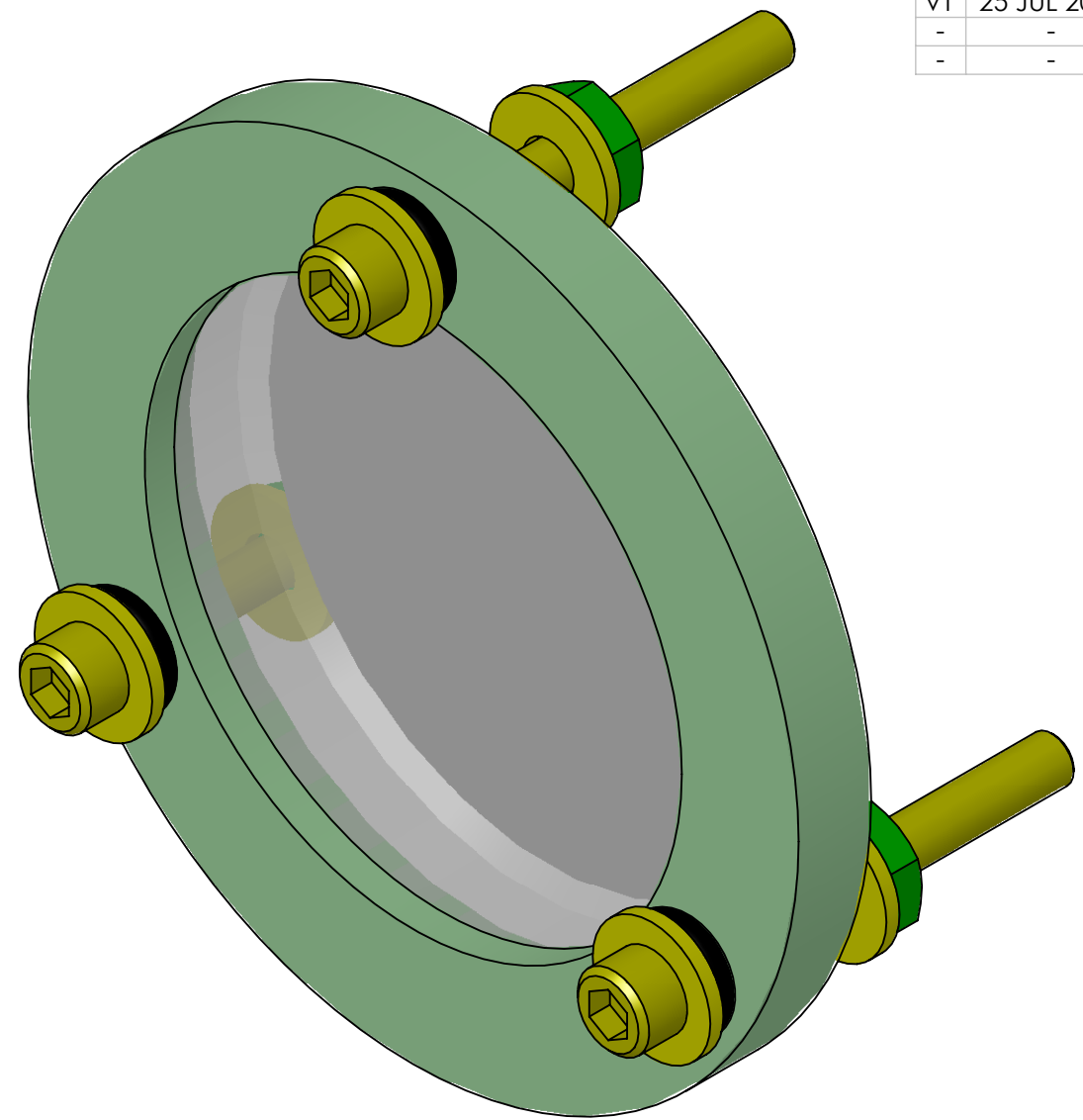
NOTES CONTINUED:

- 5. BAG AND TAG ASSEMBLY WITH DRAWING NUMBER, REVISION, AND SERIAL NUMBER. SERIAL NUMBERS START AT 001 FOR THE FIRST ARTICLE AND PROCEED CONSECUTIVELY. EXAMPLE (TAG): DXXXXXXXX-VY, S/N 001
- 6. APPROXIMATE WEIGHT = .26 LB [.12 KG].
- 7. BOND ITEM ① TO ITEM ② AROUND NOTED INTERFACE USING THERMALLY SETTING EPOXY. BOND MUST BE SECURE TO PREVENT FALLING OF ITEM ① WHICH MAY RESULT IN DAMAGING OF THE TMS TELESCOPE PRIMARY MIRROR.

REV.	DATE	DCN #	BOM #
v1	25 JUL 2011	E1100351	E1100695-v1
-	-	-	-
-	-	-	-



BACK ISO VIEW



ISO VIEW

ITEM NO.	PART NUMBER	REV	DESCRIPTION	MATERIAL	REQ	SPARE	TOTAL
7	UNSPECIFIED		THERMALLY SETTING EPOXY		AR	-	AR
6	N-832-A (U-C COMPONENTS) or equiv		HEX NUT, #8-32	Ag-PLATED 300 SSSL	3	3	6
5	92196A203 (McM-Carr) or equiv		SCREW, SOCKET HEAD CAP, #8-32 UNC-2A X 1.5 LONG	300 SSSL	3	2	5
4	98019A326 (McM-Carr) or equiv PER MS15795-841		FLAT WASHER .198 I.D., .438 O.D., .049 THICK	300 SSSL	6	3	9
3	AS568A-106		O-RING, 3/32" WIDTH, 3/16" I.D. APPROVED VITON ELASTOMER, SHORE A 70-75	FLUORO-ELASTOMER	3	3	6
2	D1100897	v1	LIGO TMS TOOLING TELESCOPE MIRROR CLAMP, 56 MM	6061-T6 Al	1	-	1
1	D1100949	v1	TMS TELESCOPE TOOLING MIRROR, 56 MM	FUSED SILICA	1	-	1

PARTS LIST

NOTES AND TOLERANCES: (UNLESS OTHERWISE SPECIFIED)

DIMENSIONS ARE IN INCHES

TOLERANCES:
 .XX ± .01
 .XXX ± .005
 ANGULAR ± 1.0°

1. INTERPRET DRAWING PER ASME Y14.5-1994.
 2. REMOVE ALL SHARP EDGES, .005-.015, FOR MACHINED PARTS. ROUND ALL EDGES APPROXIMATELY R.02 FOR SHEET METAL PARTS.
 3. DO NOT SCALE FROM DRAWING.
 4. ALL MACHINING FLUIDS MUST BE FULLY SYNTHETIC, FULLY WATER SOLUBLE AND FREE OF SULFUR, SILICONE, AND CHLORINE.

MATERIAL	N/A	FINISH	N/A μinch
----------	-----	--------	-----------

LIGO CALIFORNIA INSTITUTE OF TECHNOLOGY MASSACHUSETTS INSTITUTE OF TECHNOLOGY

SYSTEM: ADVANCED LIGO SUB-SYSTEM: AOS

PART NAME: TMS TOOLING TELESCOPE O-P ALIGNMENT MIRROR ASSEMBLY

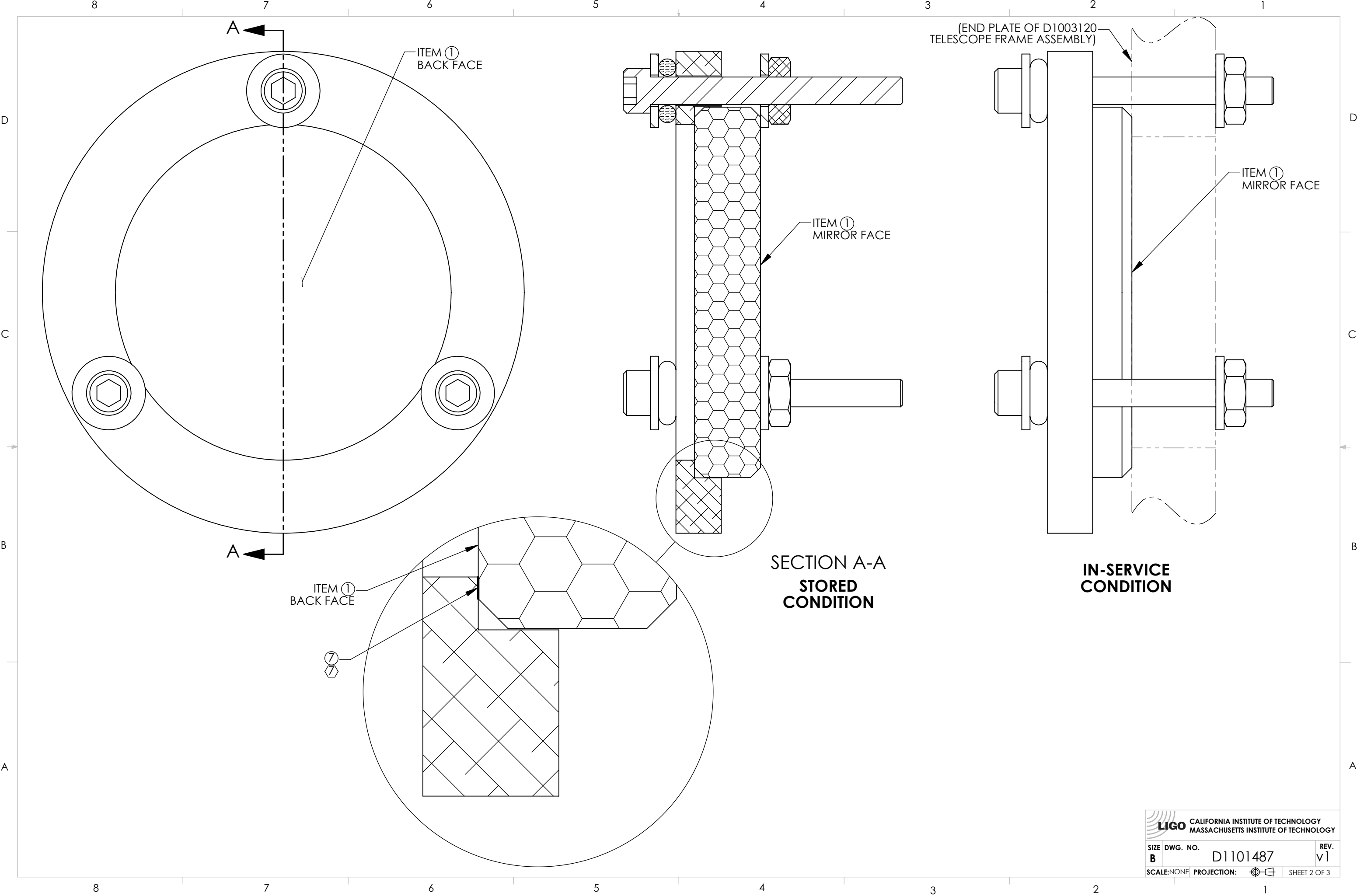
DESIGNER: K. MAILAND 22 JUL 2011
 DRAFTER: C. CONLEY 25 JUL 2011
 CHECKER: SEE DCN
 APPROVAL: SEE DCN

SIZE: B DWG. NO. D1101487 REV. v1

SCALE: NONE PROJECTION: SHEET 1 OF 3

D1101487 TMS Tooling Telescope O-P Alignment Mirror Assembly, PART PDM REV: X-011, DRAWING PDM REV: X-011

D1101487 TMS Tooling Telescope O-P Alignment Mirror Assembly, PART PDM REV: X-011, DRAWING PDM REV: X-011



ITEM ①
BACK FACE

ITEM ①
BACK FACE

ITEM ①
MIRROR FACE

ITEM ①
MIRROR FACE

(END PLATE OF D1003120
TELESCOPE FRAME ASSEMBLY)

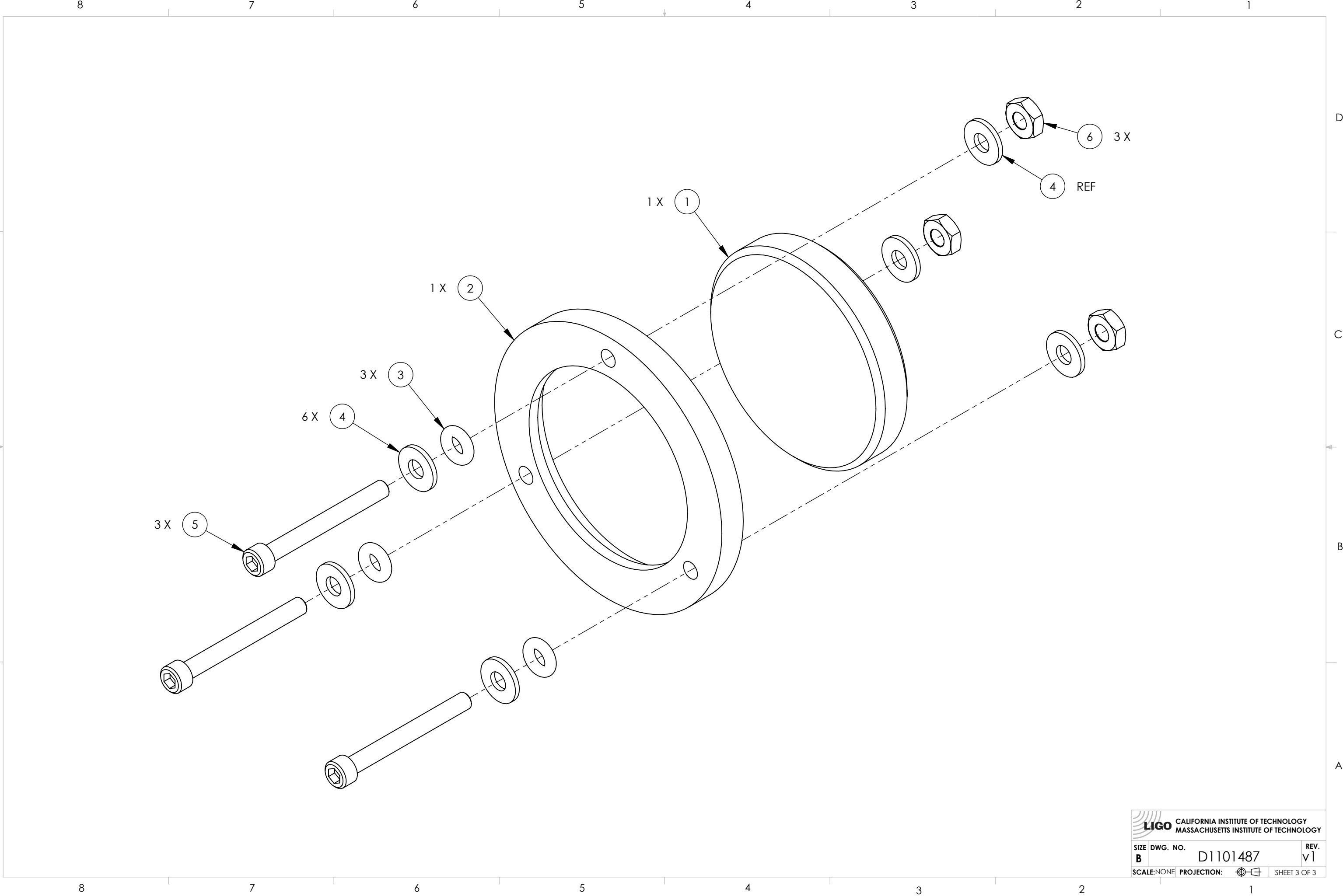
SECTION A-A
STORED
CONDITION


IN-SERVICE
CONDITION

LIGO CALIFORNIA INSTITUTE OF TECHNOLOGY
MASSACHUSETTS INSTITUTE OF TECHNOLOGY

SIZE	DWG. NO.	REV.
B	D1101487	v1
SCALE: NONE		PROJECTION:
		SHEET 2 OF 3

D1101487 TMS Tooling Telescope O-P Alignment Mirror Assembly, PART PDM REV: X-011, DRAWING PDM REV: X-011



 CALIFORNIA INSTITUTE OF TECHNOLOGY MASSACHUSETTS INSTITUTE OF TECHNOLOGY		
SIZE	DWG. NO.	REV.
B	D1101487	v1
SCALE: NONE	PROJECTION:	SHEET 3 OF 3