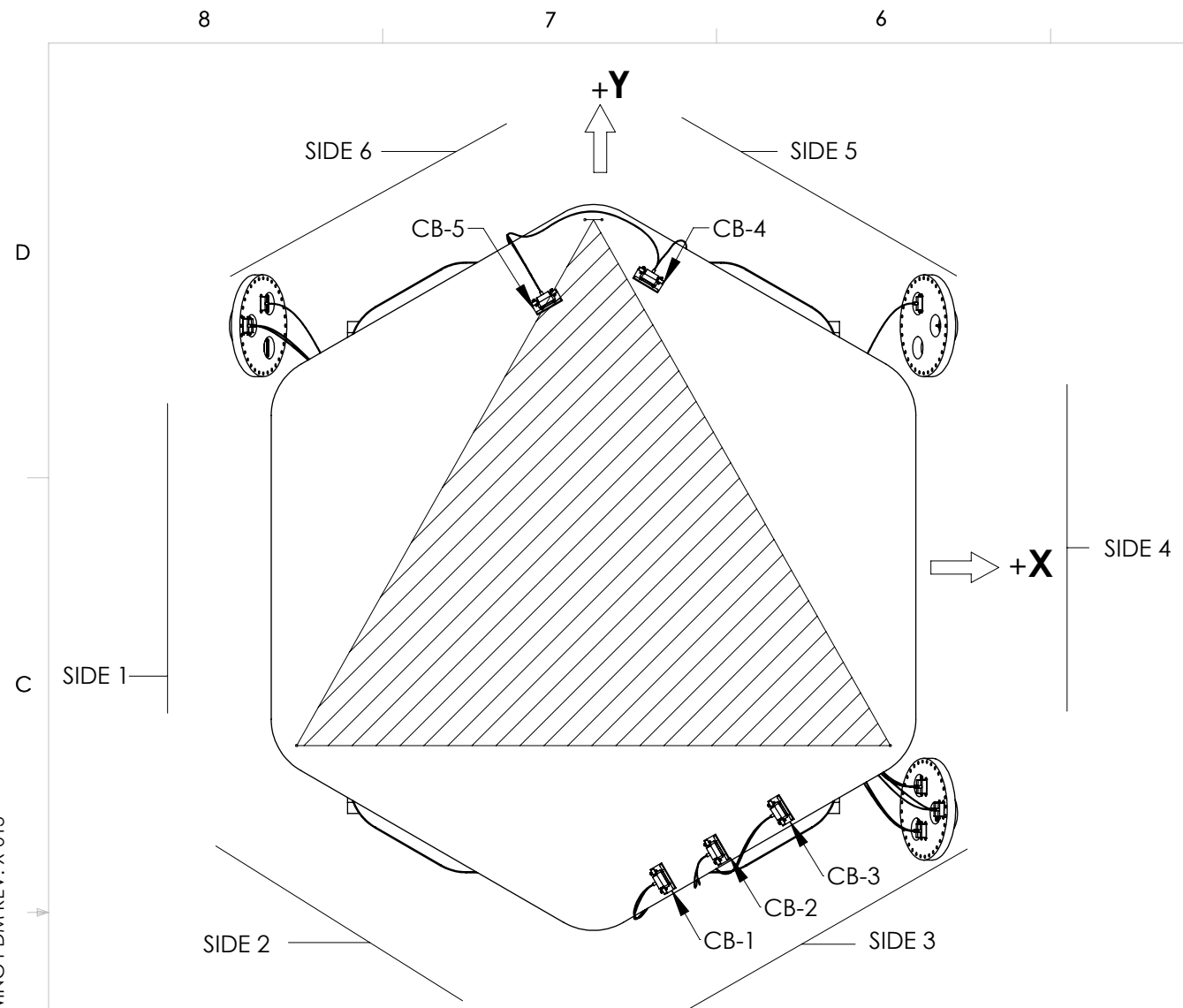
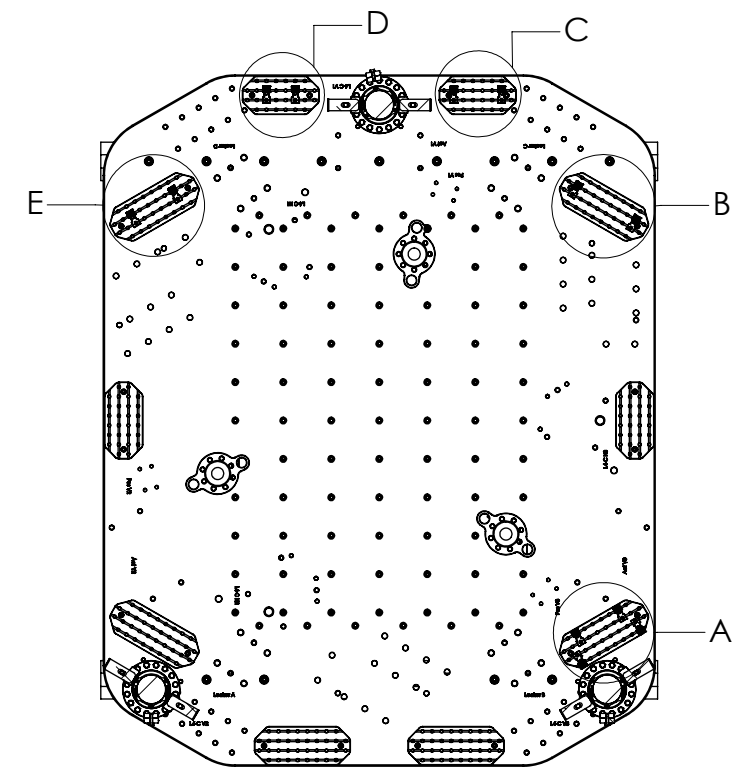
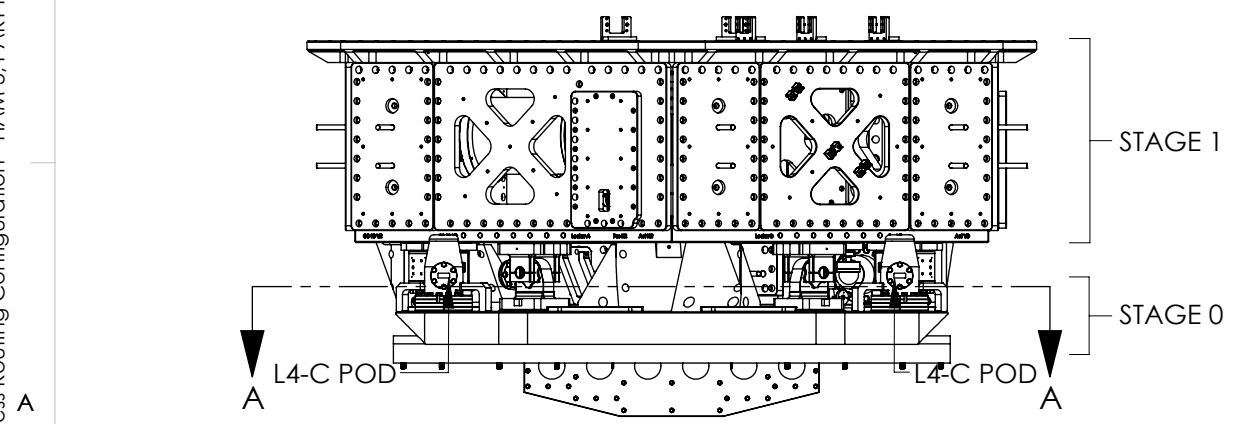


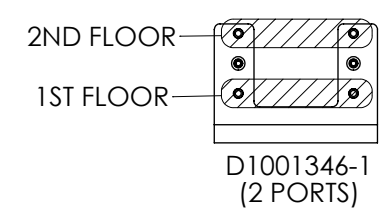
REV.	DATE	DCN #	DRAWING TREE #
v1	01 AUG 2011	-	-
v6	09 NOV 2011	-	-
v7	05 JUL 2012	-	-



CABLE BRACKET IDENTIFICATION/ORIENTATION
AS VIEWED FROM ABOVE
(THE BASE OF THE TRIANGLE IS FORMED BY TWO EXPOSED L4-C PODS ON STAGE 0)

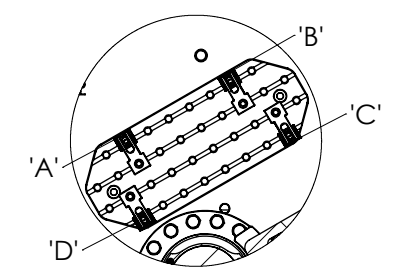


SECTION A-A
WIRING BREADBOARD/CLAMP IDENTIFICATION
(STAGE 0-PLAN VIEW)

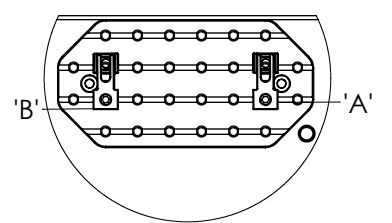


CABLE BRACKET
TYP.

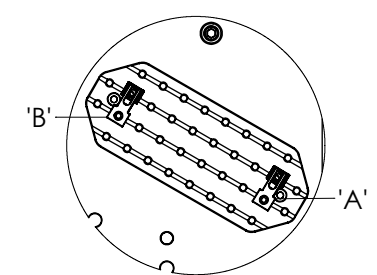
CABLE BRACKET DES.	LIGO PART NO.
CB-1	D1001346-1
CB-2	
CB-3	
CB-4	
CB-5	



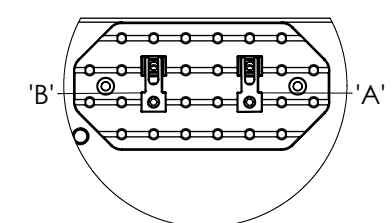
DETAIL A
WBB-1



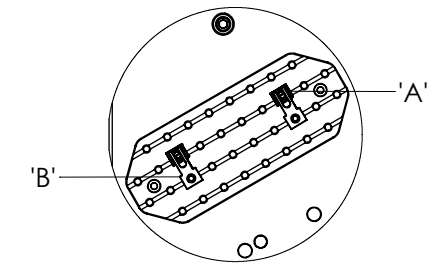
DETAIL C
WBB-3



DETAIL B
WBB-2



DETAIL D
WBB-4



DETAIL E
WBB-5

HAM 3

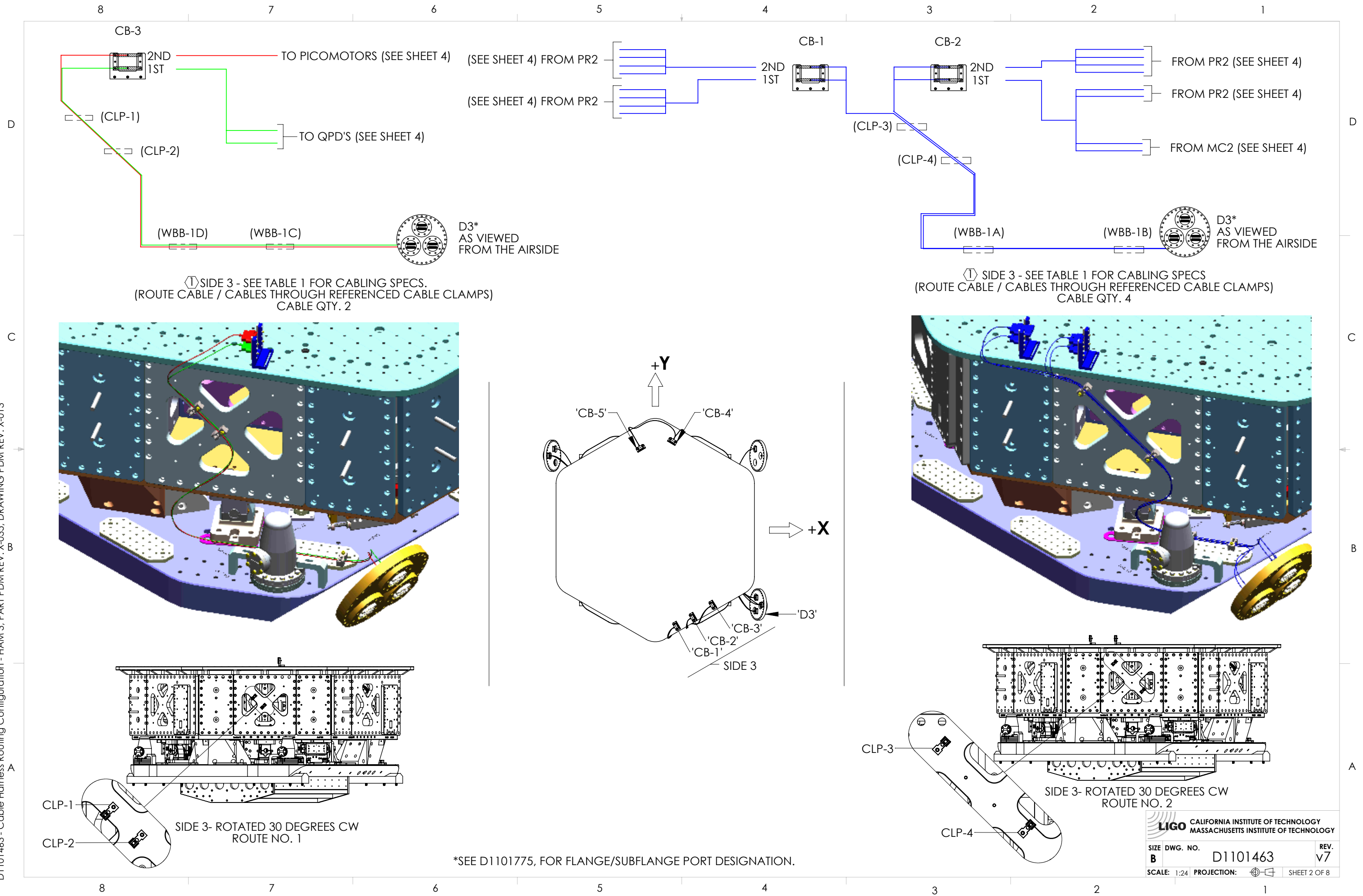
2. SEE LIGO D1000599 FOR SUS CONTROL WIRING DIAGRAM

① THE LENGTH OF CABLE(S) BETWEEN CLAMPS (CABEL TIES) SHOULD BE SUFFICIENT TO FORM A LOOSE 'S' SHAPE, BUT WITHOUT CONTACTING ANY PART WHEN ROUTING FROM ANY ISOLATED STAGE (i.e.: OPTICS TABLE TO STAGE 1, STAGE 1 TO STAGE 0)

NOTES AND TOLERANCES: (UNLESS OTHERWISE SPECIFIED)				LIGO CALIFORNIA INSTITUTE OF TECHNOLOGY MASSACHUSETTS INSTITUTE OF TECHNOLOGY		PART NAME	
MATERIAL	N/A	FINISH	N/A μinch	SYSTEM	ADVANCED LIGO	SUB-SYSTEM	SUS
				DESIGNER	ESANCHEZ	01 AUG 2011	SIZE DWG. NO.
				DRAFTER	ESANCHEZ	01 AUG 2011	B
				CHECKER	SEE DCC	SEE DCC	D1101463
				APPROVAL	SEE DCC	SEE DCC	REV. v7
				SCALE:	1:24	PROJECTION:	SHEET 1 OF 8

D1101463 - Cable Harness Routing Configuration - HAM 3, PART PDM REV: X-035, DRAWING PDM REV: X-013

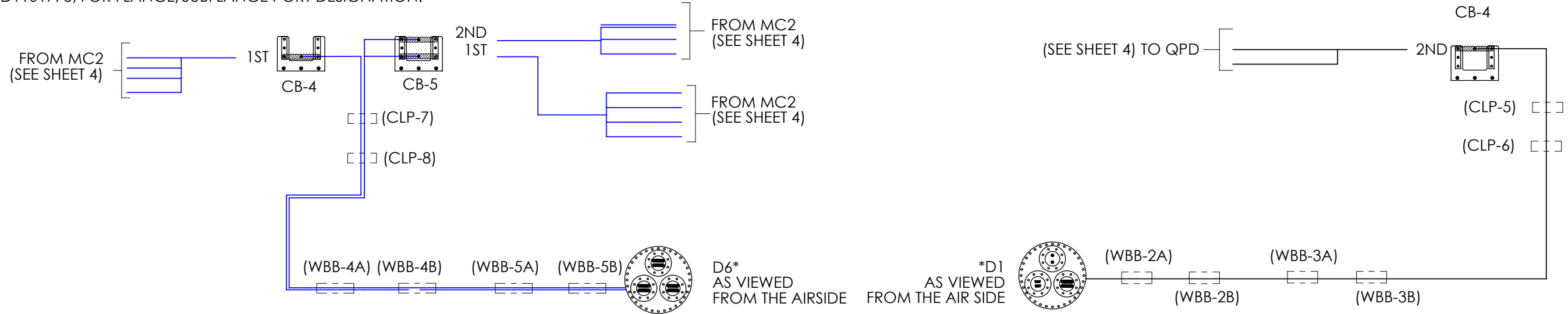
D1101463 - Cable Harness Routing Configuration - HAM 3, PART PDM REV: X-035, DRAWING PDM REV: X-013



CALIFORNIA INSTITUTE OF TECHNOLOGY
 MASSACHUSETTS INSTITUTE OF TECHNOLOGY
 SIZE DWG. NO. **B** D1101463 REV. **v7**
 SCALE: 1:24 PROJECTION: SHEET 2 OF 8

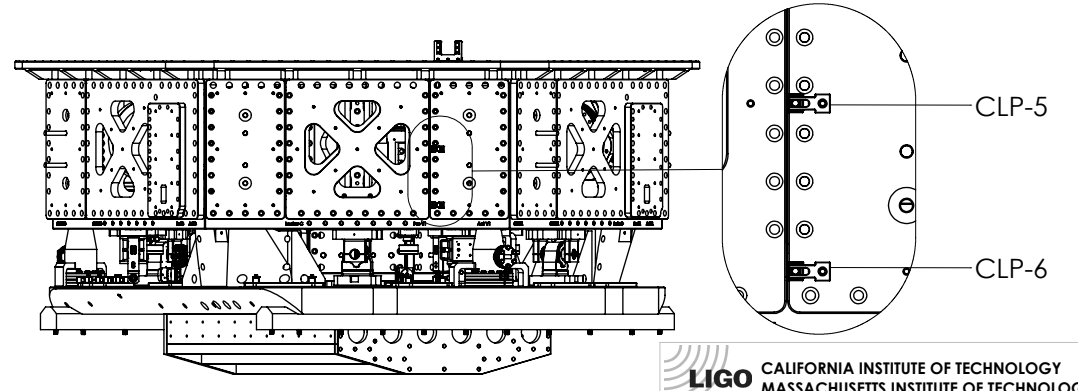
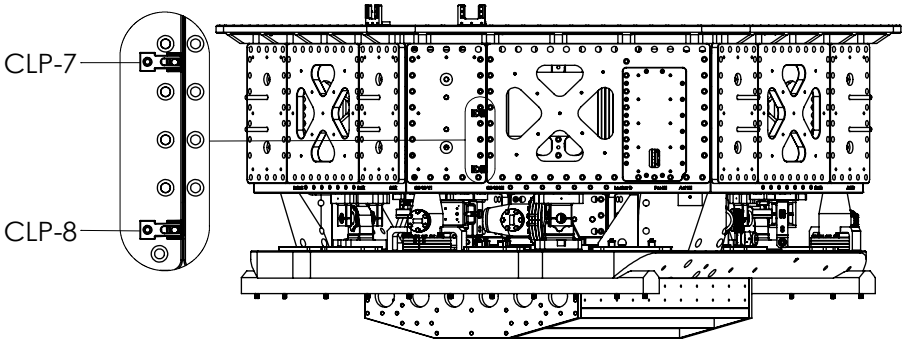
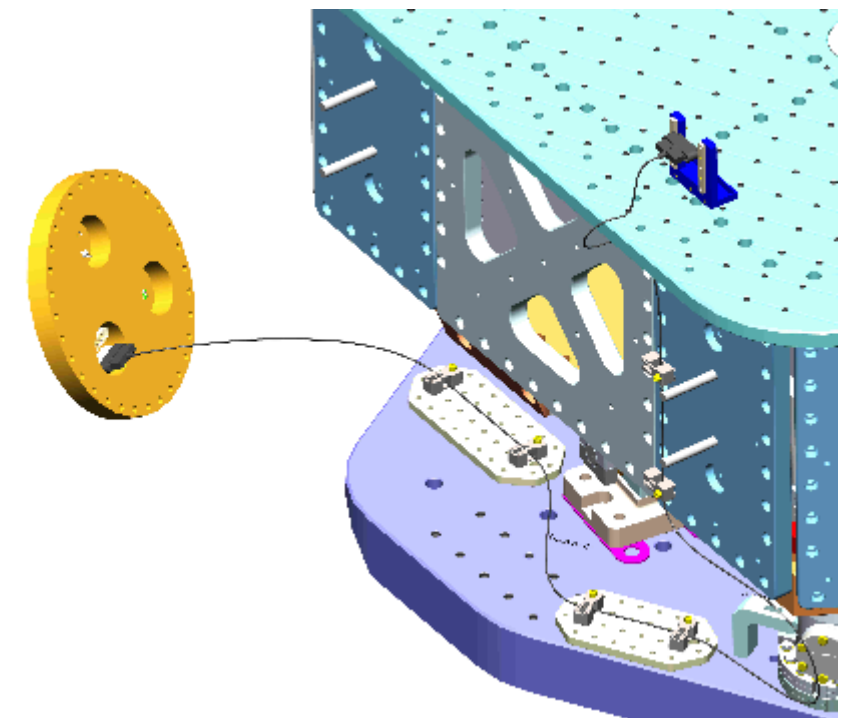
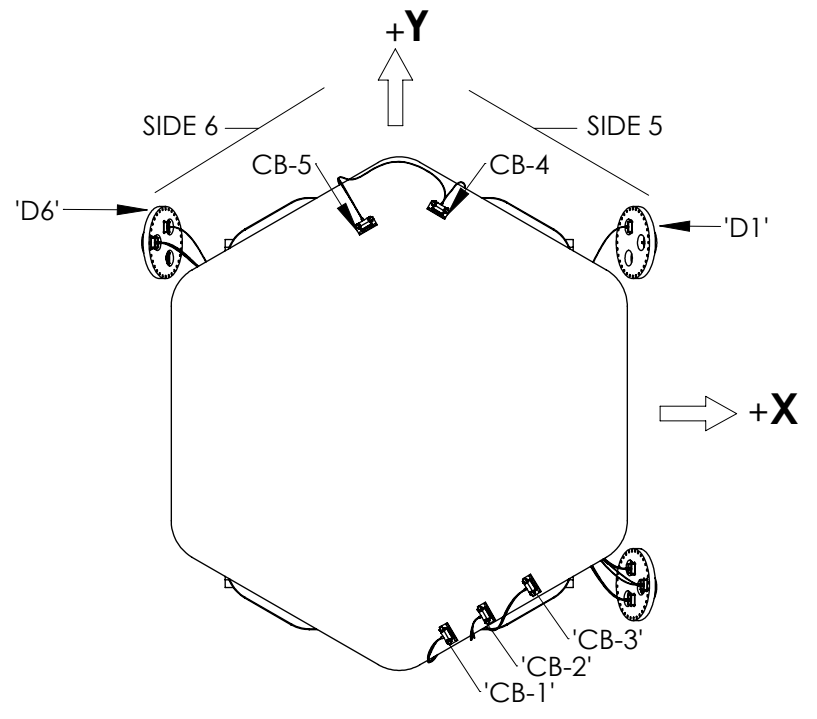
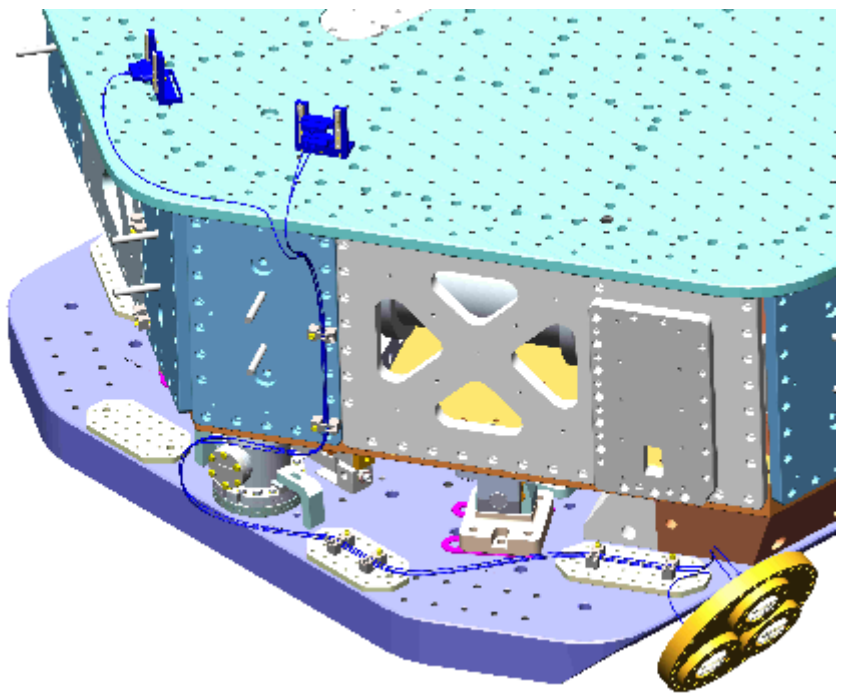
8 7 6 5 4 3 2 1

*SEE D1101775, FOR FLANGE/SUBFLANGE PORT DESIGNATION.



① ROUTE NO. 4-SEE TABLE 1 FOR CABLING SPECS.
(ROUTE CABLE/CABLES THROUGH REFERENCED CABLE CLAMPS)
CABLE QTY. 3

① ROUTE NO. 3-SEE TABLE 1 FOR CABLING SPECS.
(ROUTE CABLE/CABLES THROUGH REFERENCED CABLE CLAMPS)
CABLE QTY. 1



SIDE 6- ROTATED 150 DEGREES CCW
ROUTE NO. 4

SIDE 5- ROTATED 150 DEGREES CW
ROUTE NO. 3

LIGO CALIFORNIA INSTITUTE OF TECHNOLOGY
MASSACHUSETTS INSTITUTE OF TECHNOLOGY

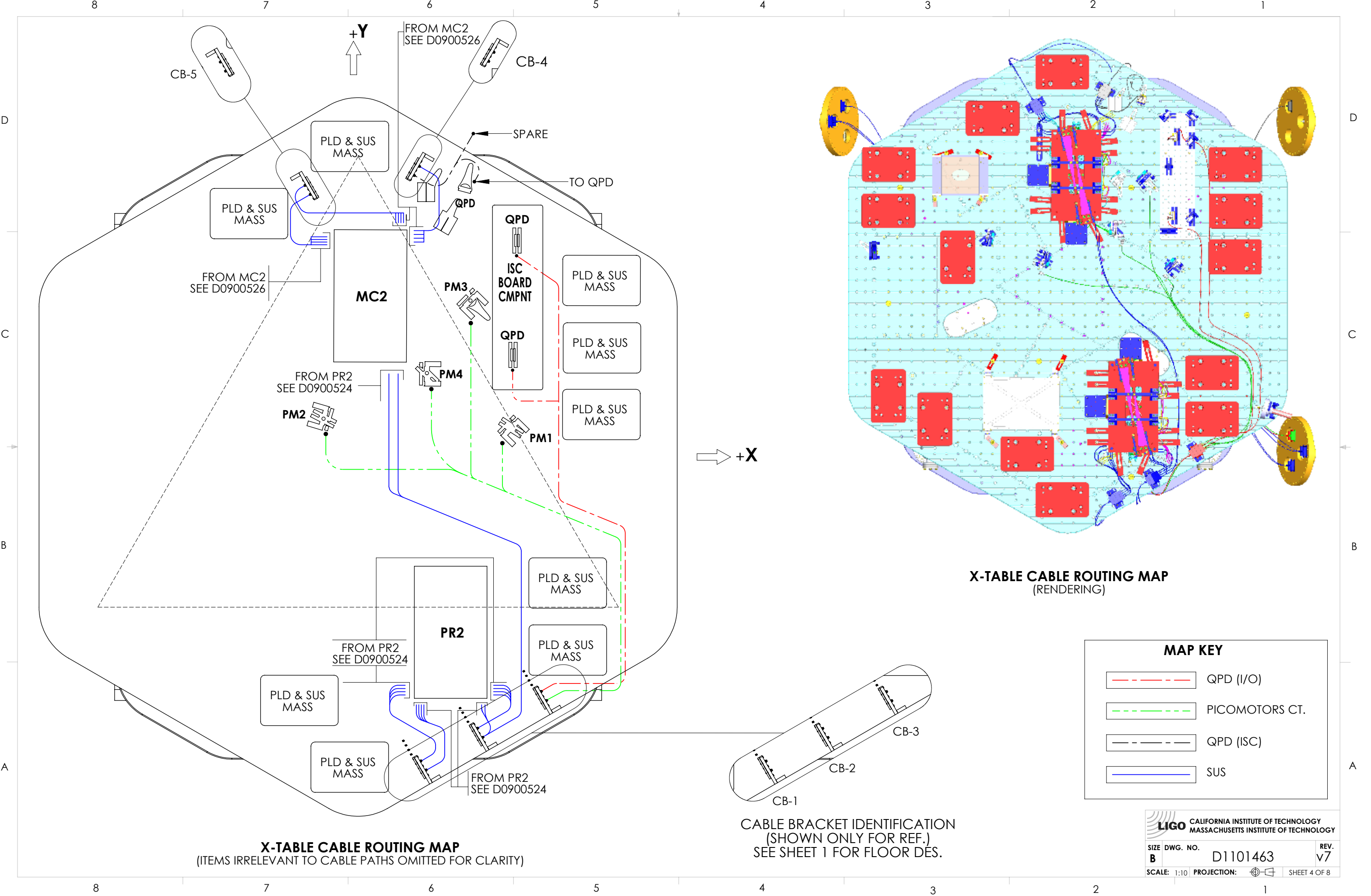
SIZE DWG. NO. **B** D1101463 REV. **v7**

SCALE: 1:24 PROJECTION: SHEET 3 OF 8

D1101463 - Cable Harness Routing Configuration - HAM 3, PART PDM REV: X-035, DRAWING PDM REV: X-013

8 7 6 5 4 3 2 1

D1101463 - Cable Harness Routing Configuration - HAM 3, PART PDM REV: X-035, DRAWING PDM REV: X-013



X-TABLE CABLE ROUTING MAP
(ITEMS IRRELEVANT TO CABLE PATHS OMITTED FOR CLARITY)

CABLE BRACKET IDENTIFICATION
(SHOWN ONLY FOR REF.)
SEE SHEET 1 FOR FLOOR DES.

X-TABLE CABLE ROUTING MAP
(RENDERING)

MAP KEY	
	QPD (I/O)
	PICOMOTORS CT.
	QPD (ISC)
	SUS

CALIFORNIA INSTITUTE OF TECHNOLOGY
 MASSACHUSETTS INSTITUTE OF TECHNOLOGY
 SIZE DWG. NO. **B** D1101463 REV. **v7**
 SCALE: 1:10 PROJECTION: SHEET 4 OF 8

TABLE 1- HAM 3 CABLING SPECIFICATIONS: ROUTES, BRACKETS DES., SUBSYSTEM AND CABLE DESCRIPTIONS.

CABLE NO.	CABLE ROUTE	TOTAL CABLE QTY.	CABLE LENGTH (IN)	CABLE NO.	FROM FLANGE DES./PORT	TO ASSIGNED CABLE BRACKET REF.DES.	CABLE BRACKET FLOOR	X-TABLE CABLING SPECS.				CMPNT. REF. DES. (SEE SHEET 4)	DESCRIPTION	SUBSYSTEM
								CABLE NO.	CABLE LENGTH (IN)	FROM	TO			
1	ROUTE NO. 1	1	108	D1101659	D3-3C1	CB-3	2ND	D1101516	69, 84, 77, 67	CB-3 (2ND)	PICOMOTORS	PM	I/O - ISC PICOMOTORS CT.	I/O - ISC
2		1	108	D1101658	D3-3C2		1ST	D1101624	68/80	CB-3 (1ST)	QPD	QPD	ISC- QUAD DIODE	ISC
3	ROUTE NO. 2	4	108	D1000225	D3-1C1	CB-2	1ST	D1000234	88	CB-2 (1ST)	*D0900524 / D0900526	PR2 / MC2	SUS - TRIPLE	SUS
4					D3-1C2		2ND	D1000234	78		CB-2 (2ND)			
5					D3-2C1	CB-1	1ST	D1000234	78	*D0900524	CB-1 (1ST)	PR2		
6					D3-2C2		2ND	D1000234	78	CB-1 (2ND)				
7	ROUTE NO. 3	1	180	D1101657	D1-3C2	CB-4	2ND	D1000231	36	CB-4 (2ND)	QPD	QPD	I/O QUAD DIODE CT.	I/O
8	ROUTE NO. 4	3	108	D1000225	D6-1C1	CB-4	1ST	D1000234	60	*D0900526	CB-4 (1ST)	MC2	SUS - TRIPLE	SUS
9					D6-1C2		CB-5	2ND	D1000234		66			
10					D6-2C1	1ST		D1000234	60		CB-5 (1ST)			

FOR INTERCONNECT CABLING DIAGRAM, SEE SHEETS 6, 7, AND 8

CABLE COUNT (SUPPLIED FOR REF. ONLY)	
CABLE DCC NO.	QTY. NEEDED
D1000225	7
D1000231	1
D1000234	7
D1101516	1
D1101624	1
D1101657	1
D1101658	1
D1101659	1

SEE E1100730 FOR DETAILED IN-VACUUM CABLE DATA (i.e.: STATUS AND AVAILABILITY)

*FOR CMPNT. SPECIFIC WIRING/CABLE ROUTING SPECS. SEE INDICATED LOWER LEVEL ASSY.

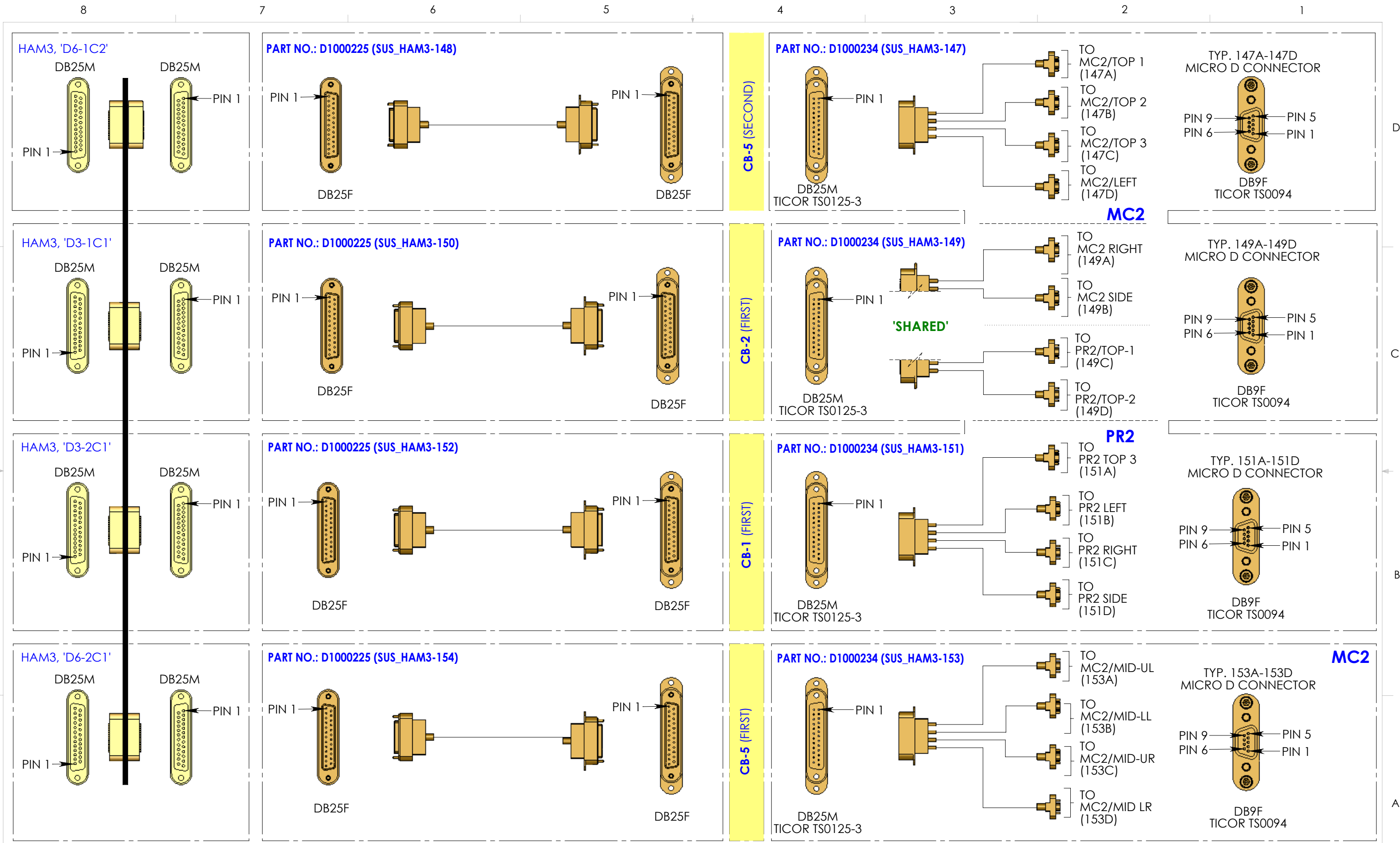
LIGO CALIFORNIA INSTITUTE OF TECHNOLOGY
MASSACHUSETTS INSTITUTE OF TECHNOLOGY

SIZE DWG. NO. **B** D1101463 REV. **v7**

SCALE: 1:24 PROJECTION: SHEET 5 OF 8

D1101463 - Cable Harness Routing Configuration - HAM 3, PART PDM REV: X-035, DRAWING PDM REV: X-013

D1101463 - Cable Harness Routing Configuration - HAM 3, PART PDM REV: X-035, DRAWING PDM REV: X-013



HAM3, INTERCONNECT CABLING DIAGRAM
(CONTINUED ON SHEET 7)

PARENTHESIS DESIGNATIONS REFERENCE WIRING SCHEMATIC, SEE D1000599.

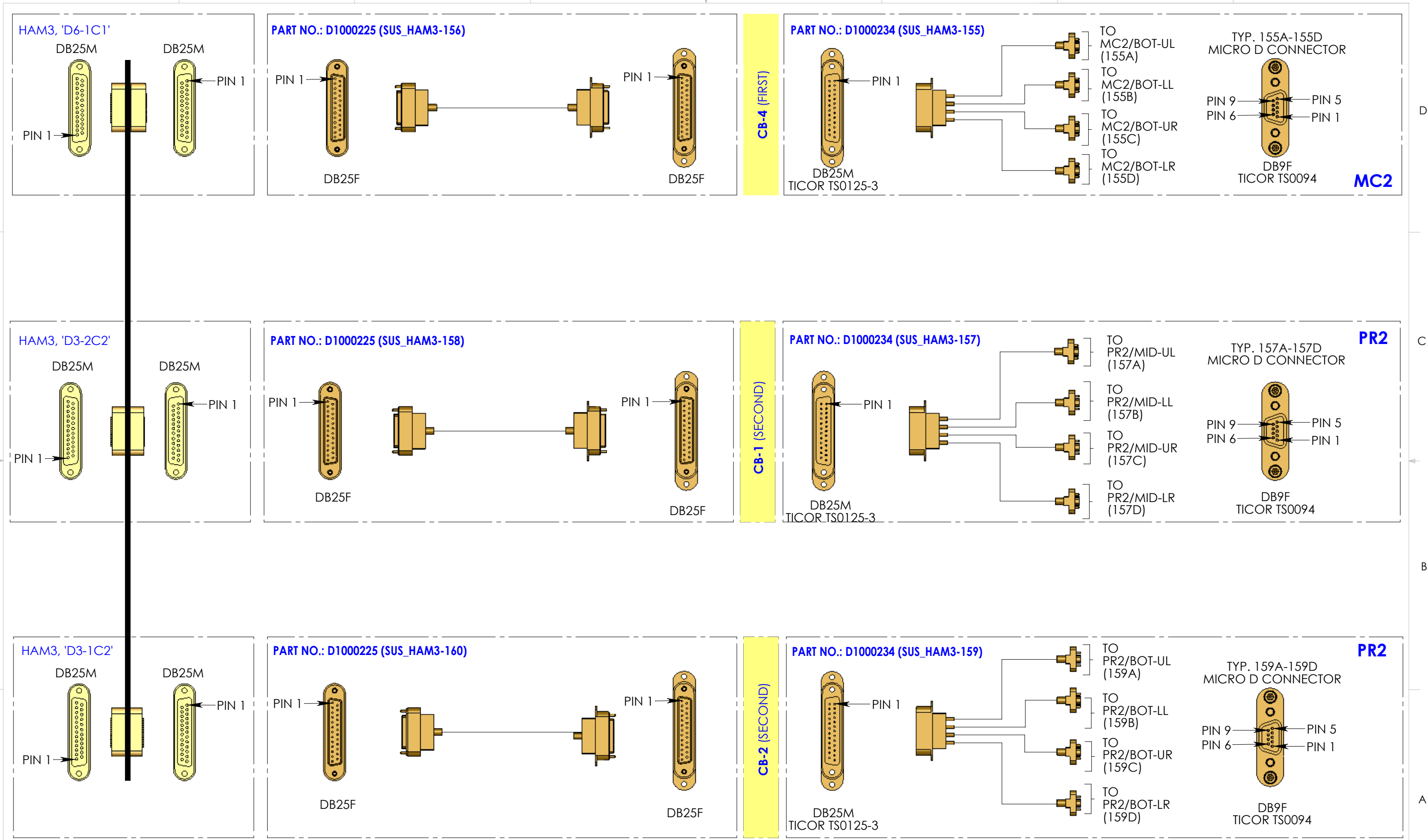
PART NO. & REF. DES. SHOWN ARE FOR REFERENCE ONLY, AND DO NOT APPEAR ON CABLE ASSEMBLIES.

LIGO CALIFORNIA INSTITUTE OF TECHNOLOGY
MASSACHUSETTS INSTITUTE OF TECHNOLOGY

SIZE DWG. NO. **B** D1101463 REV. **v7**

SCALE: 1:4 PROJECTION: SHEET 6 OF 8

D1101463 - Cable Harness Routing Configuration - HAM 3, PART PDM REV: X-035, DRAWING PDM REV: X-013



HAM3, INTERCONNECT CABLING DIAGRAM
(CONTINUED ON SHEET 8)

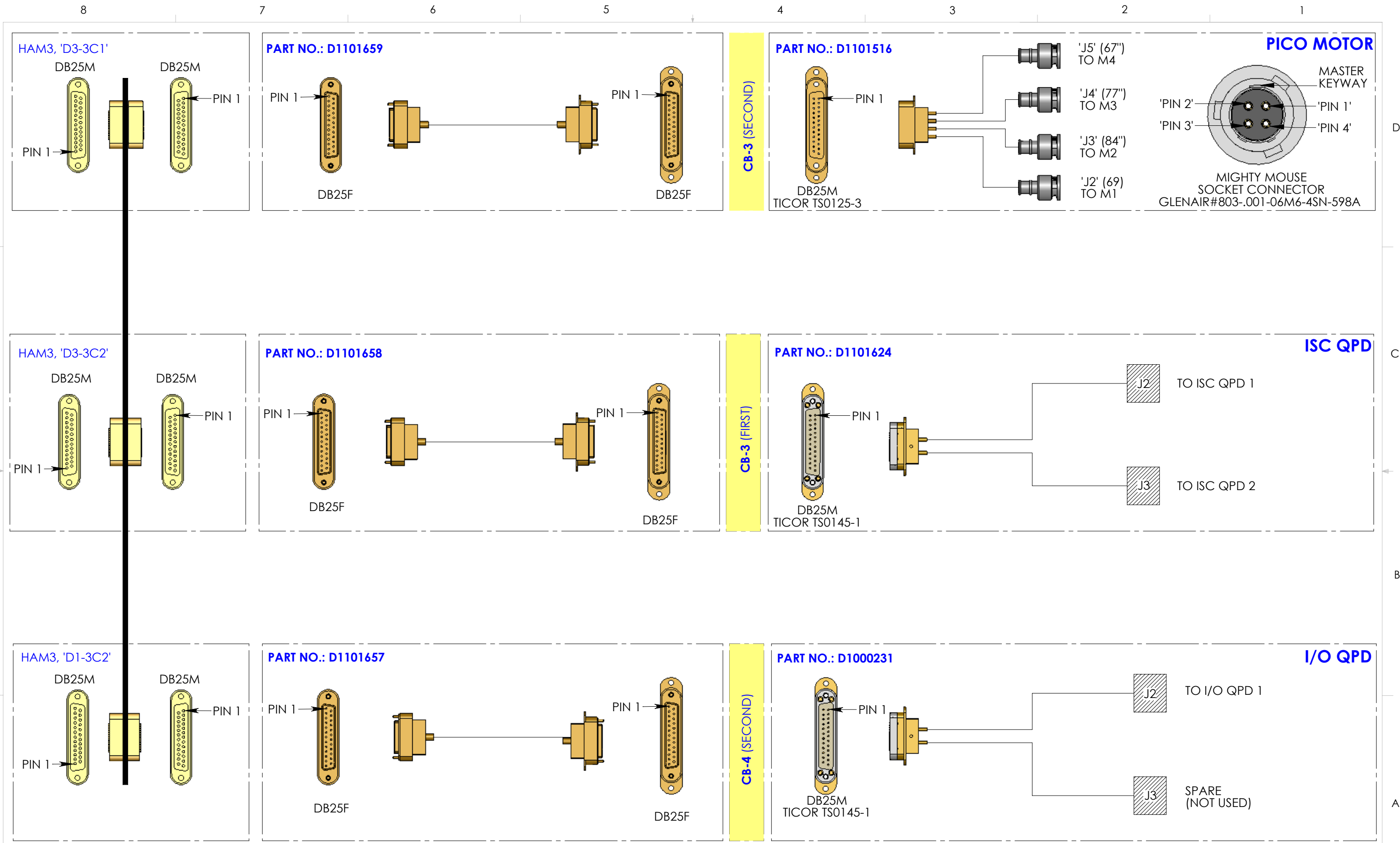
PARENTHESIS DESIGNATIONS REFERENCE WIRING SCHEMATIC, SEE D1000599.
PART NO. & REF. DES. SHOWN ARE FOR REFERENCE ONLY, AND DO NOT APPEAR ON CABLE ASSEMBLIES.

LIGO CALIFORNIA INSTITUTE OF TECHNOLOGY
MASSACHUSETTS INSTITUTE OF TECHNOLOGY

SIZE DWG. NO. **B** D1101463 REV. **v7**

SCALE: 1:4 PROJECTION: SHEET 7 OF 8

D1101463 - Cable Harness Routing Configuration - HAM 3, PART PDM REV: X-035, DRAWING PDM REV: X-013



HAM3, INTERCONNECT CABLING DIAGRAM

PARENTHESIS DESIGNATIONS REFERENCE WIRING SCHEMATIC, SEE D1000599.

PART NO. & REF. DES. SHOWN ARE FOR REFERENCE ONLY, AND DO NOT APPEAR ON CABLE ASSEMBLIES.

CALIFORNIA INSTITUTE OF TECHNOLOGY MASSACHUSETTS INSTITUTE OF TECHNOLOGY	
SIZE DWG. NO.	REV.
B	D1101463 v7
SCALE: 1:4	PROJECTION: SHEET 8 OF 8