

8

7

6

5

4

3

2

1

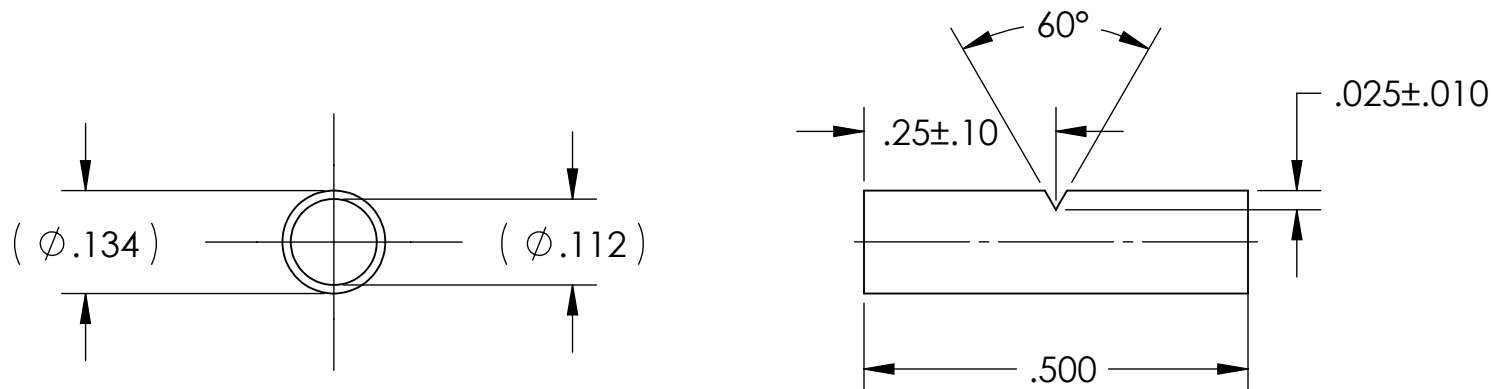
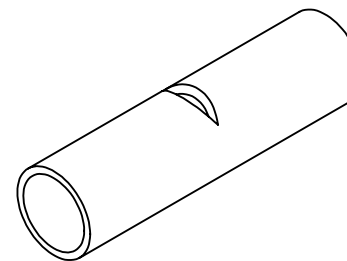
NOTES CONTINUED:

5. SCRIBE, ENGRAVE, LASER MARK OR MECHANICALLY STAMP (NO DYES OR INKS) A UNIQUE THREE DIGIT SERIAL NUMBER & REVISION NUMBER ON EACH PART. SERIAL NUMBERS START AT 001 FOR THE FIRST ARTICLE AND PROCEED CONSECUTIVELY. BAG AND TAG PARTS WITH THEIR DRAWING PART NUMBER, REVISION, VARIANT OR "TYPE" (IF APPLICABLE), AND QUANTITY. IF PARTS ARE TOO SMALL TO SCRIBE, BAGGING AND TAGGING ALONE IS SUFFICIENT.  
 EXAMPLE (PART): 001-v1  
 EXAMPLE (TAG): DXXXXXX-VY, TYPE-XX, QTY: TBD

- 6. APPROXIMATE WEIGHT = 0.0006 LB.
- 8. ALL PARTS SHALL BE MANUFACTURED IN ACCORDANCE WITH LIGO SPECIFICATION E0900364.
- 9. SURFACE FINISH TO BE AS-PROCESSED FROM MILL/SUPPLIER, FREE FROM SCRATCHES OR GOUGES.

10. MAKE FROM McMASTER #8987K411 HYPODERMIC TUBING  
 $\phi .134 \pm .001$  OD X  $\phi .114$  ID.

REV.	DATE	DCN #	DRAWING TREE #
V1	12 JUL 2011	E1100667	-
-	-	-	-
-	-	-	-



D1101302 QUGO, SUS, FMBS SIDE DAMPER SPREADER TUBE, PART PDM REV. , DRAWING PDM REV:

D

C

B

A

D

C

B

A

NOTES AND TOLERANCES: (UNLESS OTHERWISE SPECIFIED)

DIMENSIONS ARE IN INCHES  
 TOLERANCES:  
 .XX ± .01  
 .XXX ± .005  
 ANGULAR ± 0.5°

- 1. INTERPRET DRAWING PER ASME Y14.5-1994.
- 2. REMOVE ALL SHARP EDGES, .005-.015, FOR MACHINED PARTS. ROUND ALL EDGES APPROXIMATELY R.02 FOR SHEET METAL PARTS.
- 3. DO NOT SCALE FROM DRAWING.
- 4. ALL MACHINING FLUIDS MUST BE FULLY SYNTHETIC, FULLY WATER SOLUBLE AND FREE OF SULFUR, SILICONE, AND CHLORINE.

MATERIAL 10 304 SSTL FINISH N/A  $\mu$ inch

**LIGO** CALIFORNIA INSTITUTE OF TECHNOLOGY  
 MASSACHUSETTS INSTITUTE OF TECHNOLOGY

SYSTEM ADVANCED LIGO SUB-SYSTEM SUS  
 NEXT ASSY D1101299

PART NAME FM/BS SIDE DAMPER SPREADER TUBE

DESIGNER	D. E. CLARK	29 JUN 2	SIZE	DWG. NO.	REV.
DRAFTER	K. BUCKLAND	12 JUL 2011	B	D1101302	v1
CHECKER			SCALE: 4:1	PROJECTION:	SHEET 1 OF 1
APPROVAL					

8

7

6

5

4

3

2

1