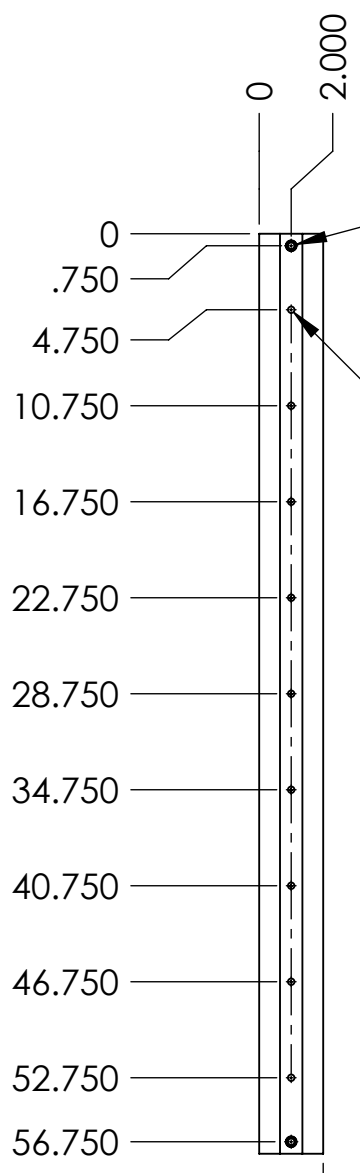


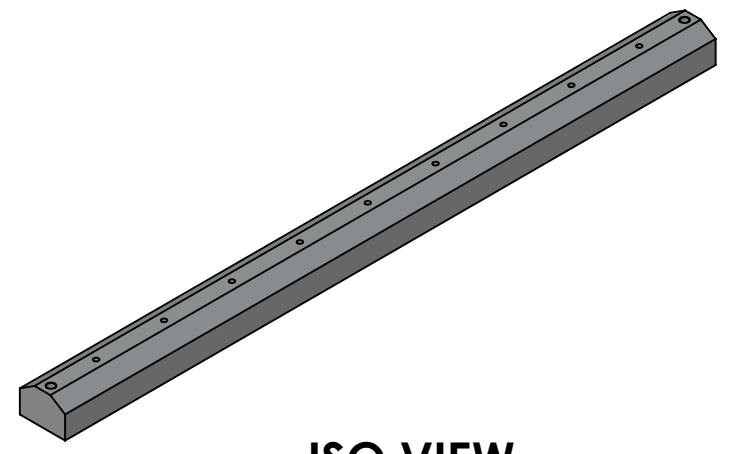
NOTES CONTINUED:
 5. SCRIBE, ENGRAVE (A VIBRATORY TOOL MAY BE USED), LASER MARK OR MECHANICALLY STAMP (NO INKS OR DYES) DRAWING PART NUMBER, REVISION (AND VARIANT OR "TYPE" IF APPLICABLE) ON NOTED SURFACE OF PART FOLLOWED ON THE NEXT LINE WITH A THREE DIGIT SERIAL NUMBER. SERIAL NUMBERS START AT 001 FOR THE FIRST ARTICLE AND PROCEED CONSECUTIVELY. USE MINIMUM 0.12" HIGH CHARACTERS, UNLESS THE SIZE OF THE PART DICTATES SMALLER CHARACTERS. EXAMPLE: DXXXXXX-VY, TYPE-XX, S/N XXX
 6. MACHINE ALL SURFACES TO REMOVE OXIDES AND MILL FINISH, USE OF ABRASIVE REMOVAL TECHNIQUES IS NOT ALLOWED.
 7. ALL PARTS SHALL BE MANUFACTURED IN ACCORDANCE WITH LIGO SPECIFICATION E0900364

REV.	DATE	DCN #	DRAWING TREE #
v1	22 JUN 2011	-	-
v3	22 OCT 2019	E1900327	-
v4	31 MAY 2023	E2300153-x0	-

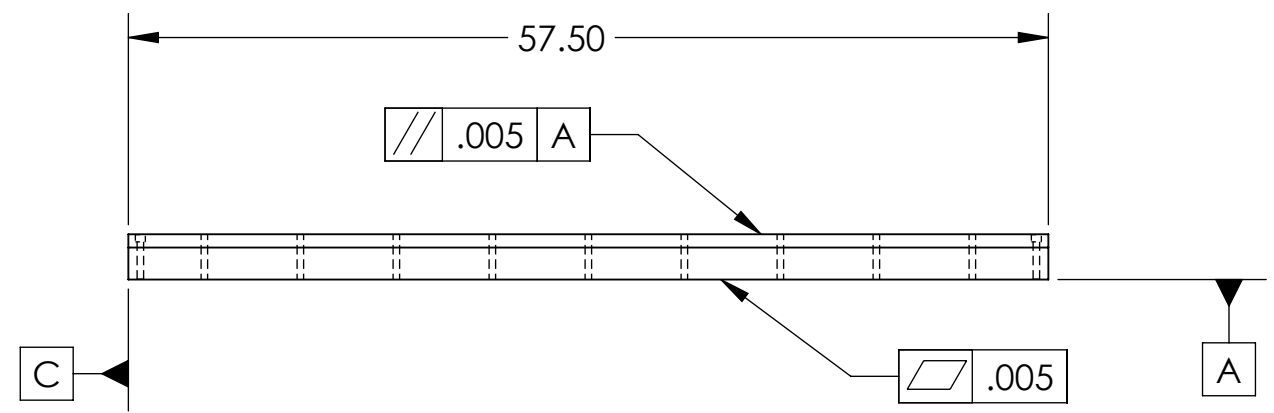
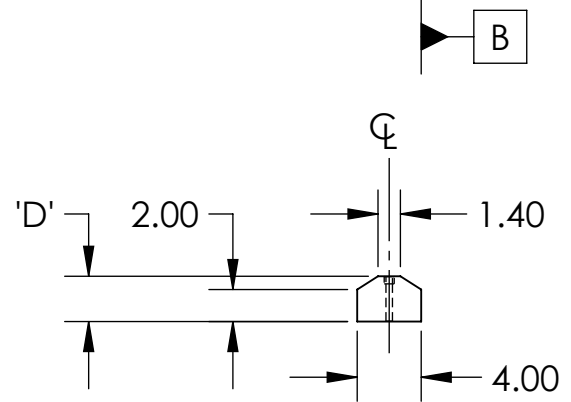


2X ϕ .406 THRU ALL
 \square ϕ .625 ∇ .48
 \sphericalangle ϕ .68 X 90°, NEAR SIDE
 \sphericalangle ϕ .46 X 90°, FAR SIDE
 \oplus .010 A B C

9X ϕ .406 THRU ALL
 \oplus .010 A B C



ISO VIEW



aLIGO

FOR TYPES -02 AND -03, SEE SHEET 2
 FOR TYPES -04 AND -05, SEE SHEET 3

PART NUMBER	DIM 'D'	WHERE USED
D1101180-00	2.830	aLIGO
D1101180-01	2.840	aLIGO

NOTES AND TOLERANCES: (UNLESS OTHERWISE SPECIFIED)

DIMENSIONS ARE IN INCHES
 TOLERANCES:
 .XX ± .02
 .XXX ± .005
 ANGULAR ± 0.5°

1. INTERPRET DRAWING PER ASME Y14.5-1994.
 2. REMOVE ALL SHARP EDGES, R.02 MIN. FOR MACHINED PARTS.
 3. DO NOT SCALE FROM DRAWING.
 4. ALL MACHINING FLUIDS MUST BE FULLY SYNTHETIC, FULLY WATER SOLUBLE AND FREE OF SULFUR, SILICONE, AND CHLORINE.

LIGO CALIFORNIA INSTITUTE OF TECHNOLOGY MASSACHUSETTS INSTITUTE OF TECHNOLOGY

PART NAME Spacer HAM ISI aLIGO

DESIGNER S FOLEY **DATE** 22 JUN 2011 **SIZE** **DWG. NO.** **B** **D1101180** **REV.** **v4**

DRAFTER SFOLEY

CHECKER

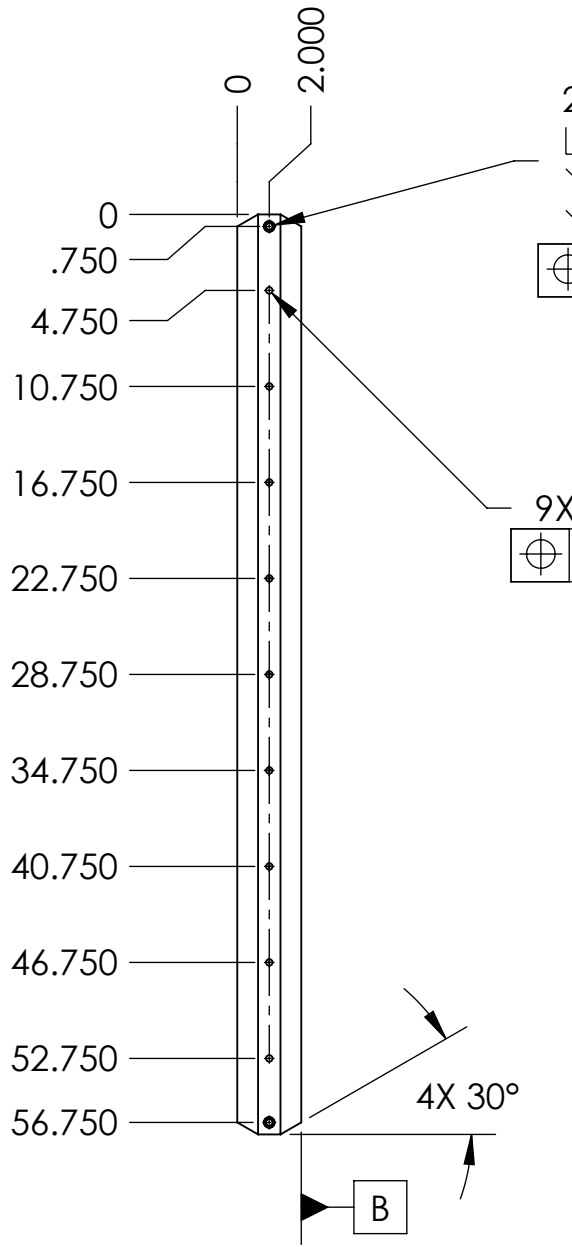
APPROVAL

MATERIAL 6061 Alloy **FINISH** 63 μ inch

NEXT ASSY D0900367, D0901085, D0901096, D1900251, D1900252, D1900264, D1900265

SCALE: 1:12 **PROJECTION:** **SHEET 1 OF 3**

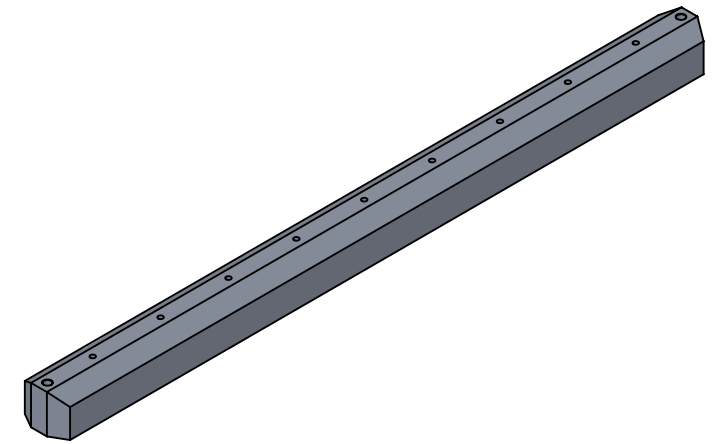
D
C
B
A



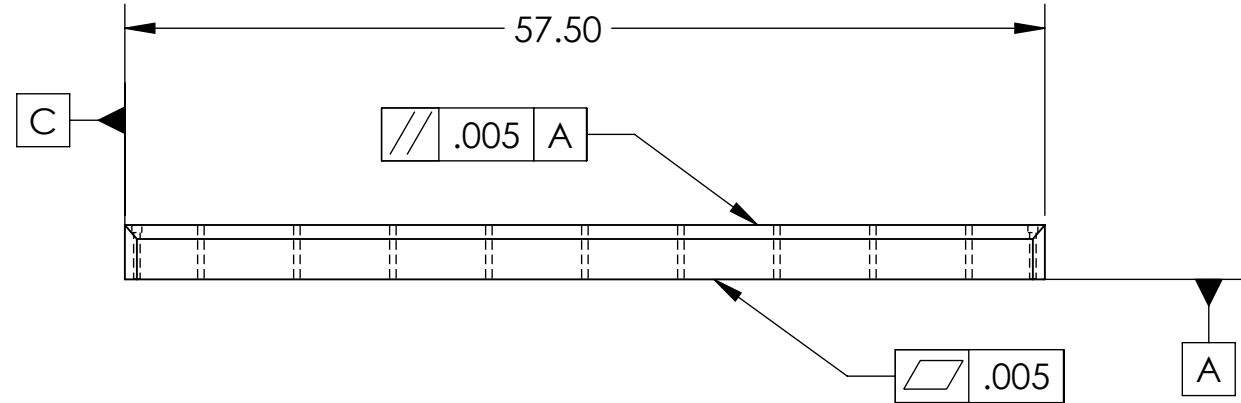
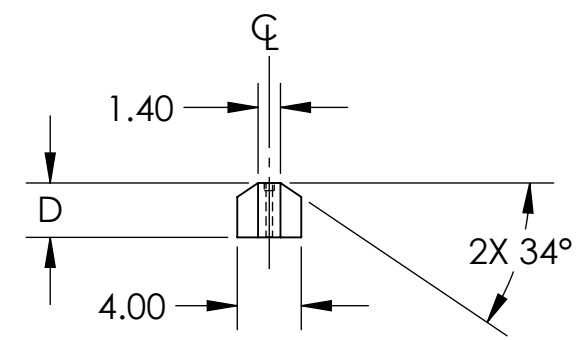
2X ϕ .406 THRU ALL
 \square ϕ .625 ∇ .48
 \sphericalangle ϕ .68 X 90°, NEAR SIDE
 \sphericalangle ϕ .46 X 90°, FAR SIDE

\oplus .010 A B C

9X ϕ .406 THRU ALL
 \oplus .010 A B C



ISO VIEW



A+

FOR TYPES -00 AND -01, SEE SHEET 1
 FOR TYPES -04 AND -05, SEE SHEET 3

TABLE 2		
PART NUMBER	DIM 'D'	WHERE USED
D1101180-02	3.400	A+, L1
D1101180-03	2.649	A+, H1

LIGO CALIFORNIA INSTITUTE OF TECHNOLOGY
 MASSACHUSETTS INSTITUTE OF TECHNOLOGY

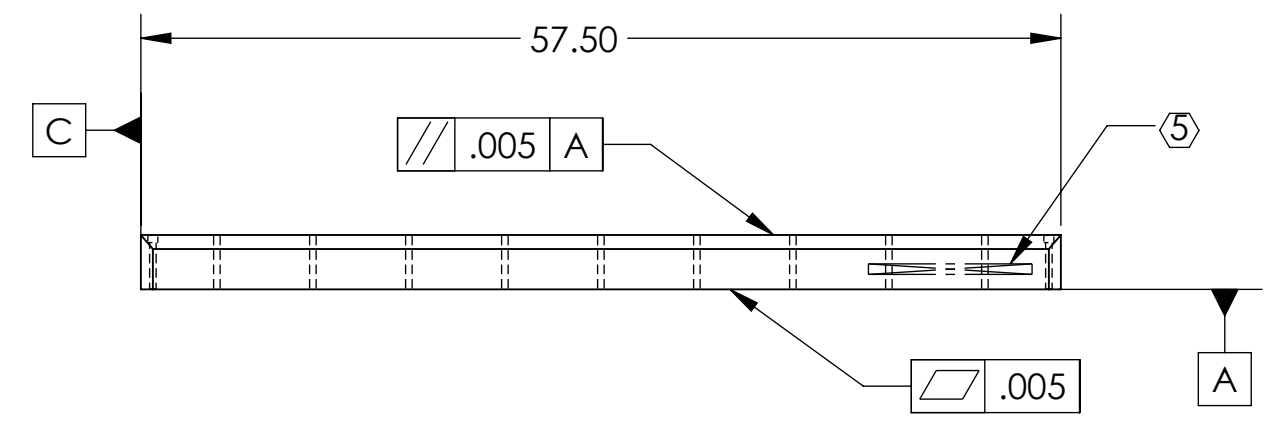
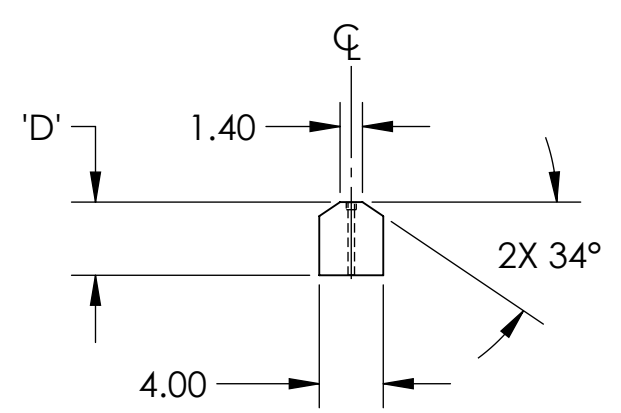
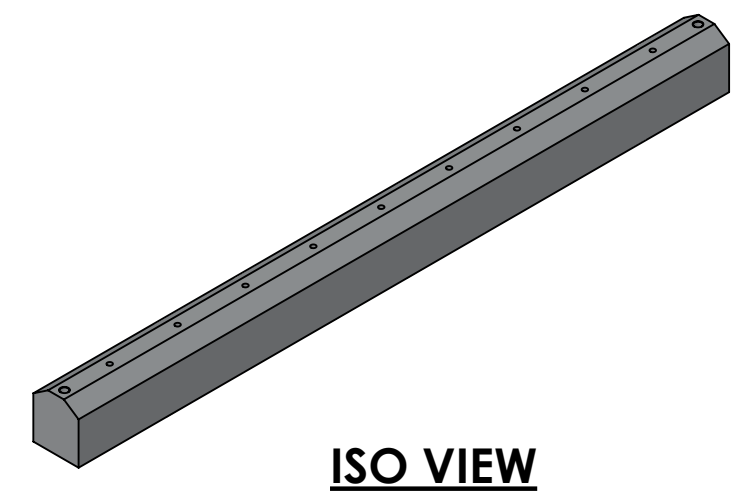
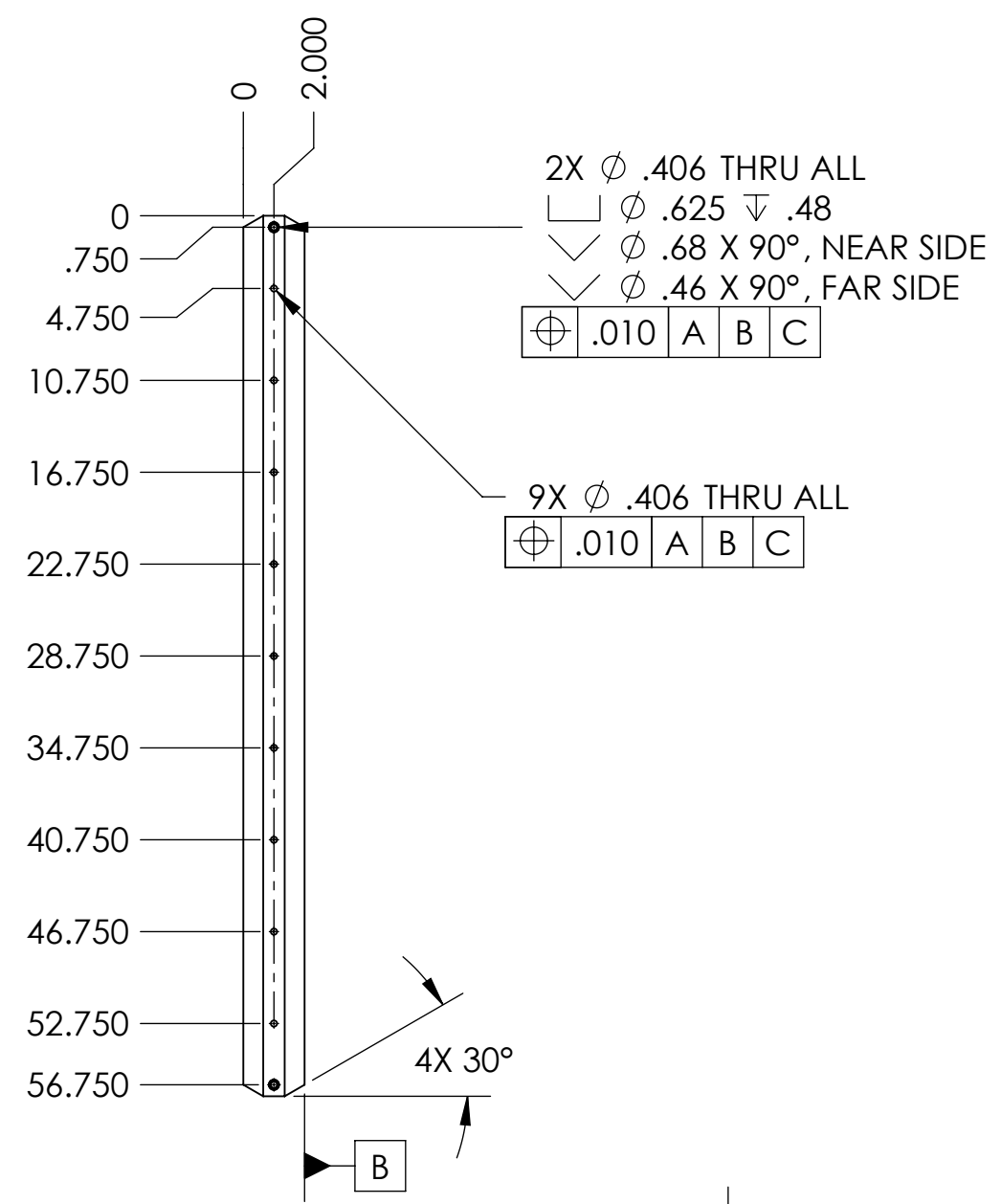
SIZE DWG. NO. **B** D1101180 REV. v4

SCALE: 1:12 PROJECTION: \oplus - \square SHEET 2 OF 3

8 7 6 5 4 3 2 1

D
C
B
A

D
C
B
A



FOR TYPES -00 AND -01, SEE SHEET 1
FOR TYPES -02 AND -03, SEE SHEET 2

TABLE 2		
PART NUMBER	DIM 'D'	WHERE USED
D1101180-04	4.574	O5, L1
D1101180-05	4.838	O5, H1

O5

LIGO CALIFORNIA INSTITUTE OF TECHNOLOGY
MASSACHUSETTS INSTITUTE OF TECHNOLOGY

SIZE DWG. NO. **B** D1101180 REV. v4

SCALE: 1:12 PROJECTION: \oplus SHEET 3 OF 3

8 7 6 5 4 3 2 1