

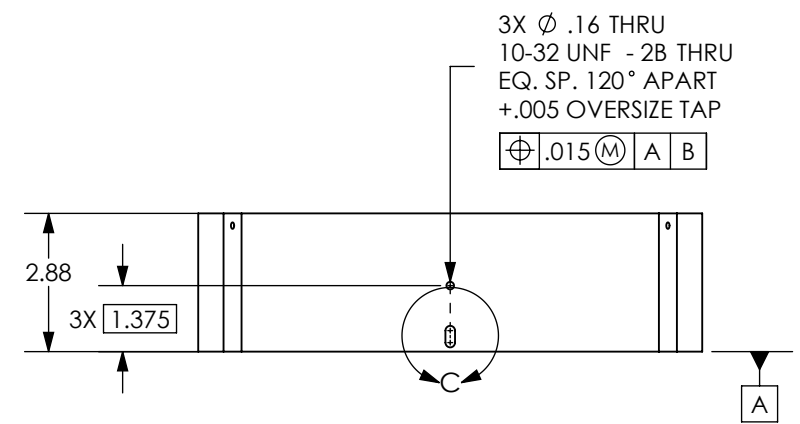
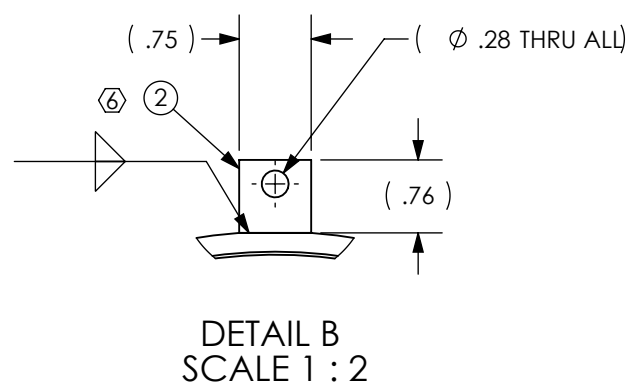
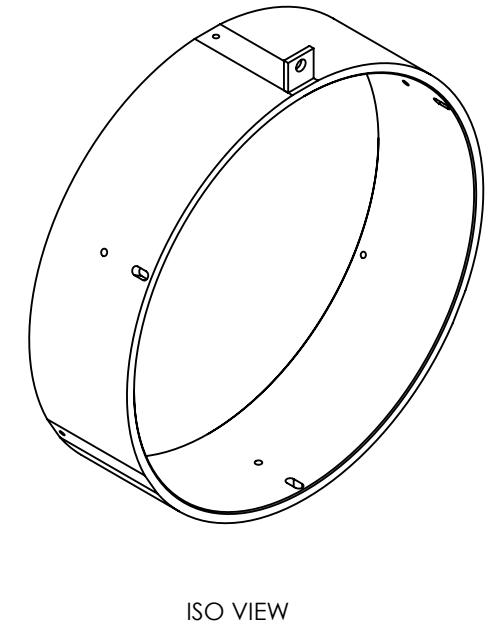
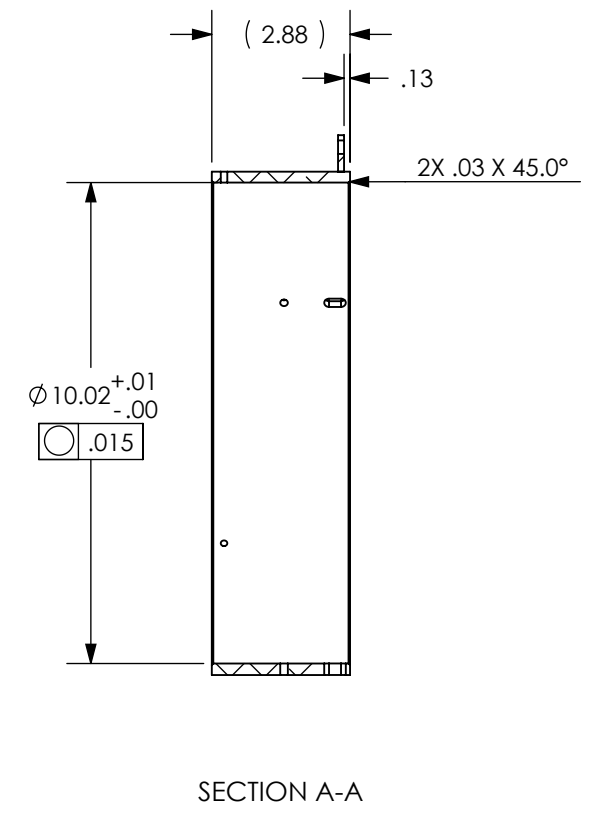
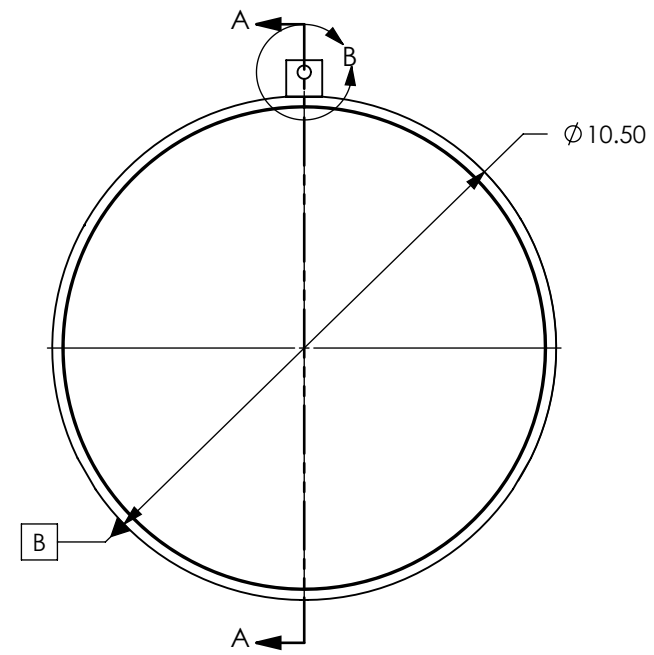
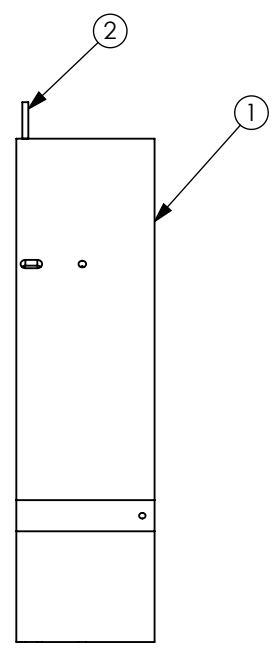
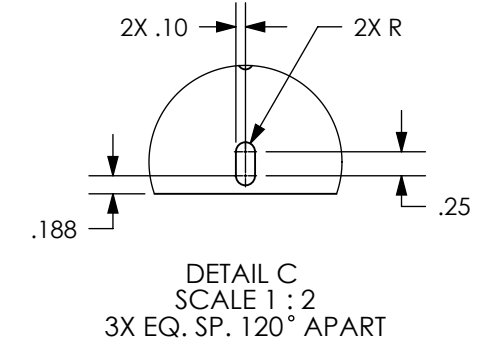
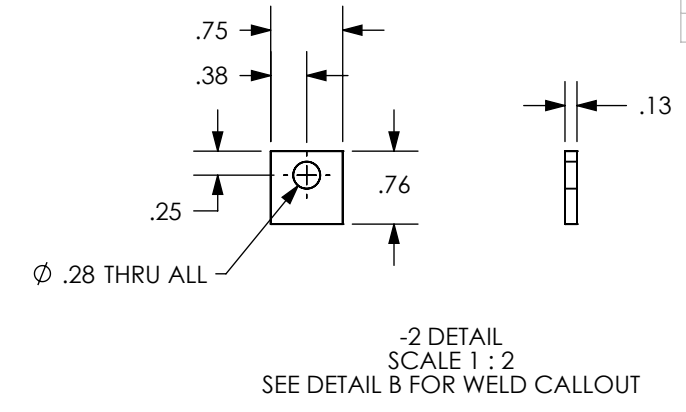
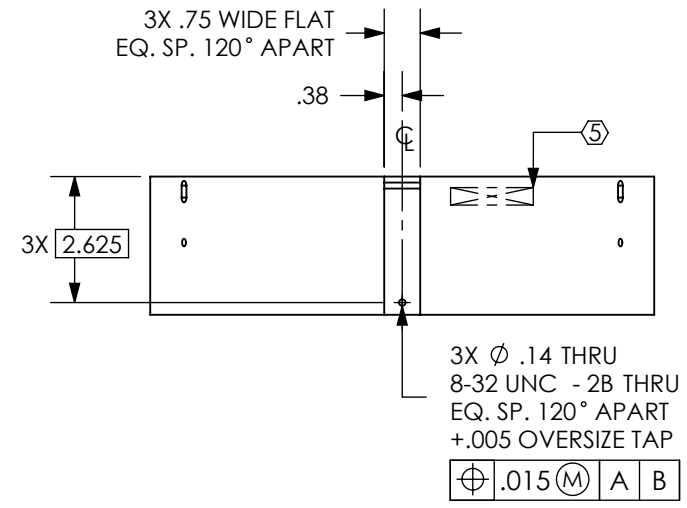
D1101169_alIGO_VE_VIEWPORT_GUARD_ASSY., FLANGE MT. COUPLER, PART PDM REV: X-001, DRAWING PDM REV: X-001

NOTES CONTINUED:

⑤ SCRIBE, ENGRAVE, OR MECHANICALLY STAMP (NO INKS OR DYES) DRAWING PART NUMBER, REVISION (AND VARIANT OR "TYPE" IF APPLICABLE) ON NOTED SURFACE OF PART FOLLOWED ON THE NEXT LINE WITH A THREE DIGIT SERIAL NUMBER. SERIAL NUMBERS START AT 001 FOR THE FIRST ARTICLE AND PROCEED CONSECUTIVELY. USE MINIMUM 0.12" HIGH CHARACTERS, UNLESS THE SIZE OF THE PART DICTATES SMALLER CHARACTERS. A VIBRATORY TOOL MAY BE USED. EXAMPLE: DXXXXXX-VY, TYPE-XX, S/N XXX

⑥ ITEMS 1 AND 2 CAN BE MADE FROM ONE PIECE IF DESIRED.

REV.	DATE	DCN #	DRAWING TREE #
v1	20 JUN 2011	E1100531-x0	-
-	-	-	-
-	-	-	-



ITEM NO.	PART NUMBER	DESCRIPTION	MATERIAL	REQ
2	D1101169-2	VIEWPORT GUAR ASSY., LOCKING TAB	6061-T6	1
1	D1101169-1	VIEWPORT GUARD ASSY., FLANGE MT. COUPLER	6061-T6	1

NOTES AND TOLERANCES: (UNLESS OTHERWISE SPECIFIED)

DIMENSIONS ARE IN INCHES

TOLERANCES:
 .XX ± .01
 .XXX ± .005
 ANGULAR ± 0.5°

1. INTERPRET DRAWING PER ASME Y14.5-1994.
 2. REMOVE ALL SHARP EDGES, .005-.015, FOR MACHINED PARTS. ROUND ALL EDGES APPROXIMATELY R.02 FOR SHEET METAL PARTS.
 3. DO NOT SCALE FROM DRAWING.
 4. CLEAR ANODIZE PER MIL-A-8625, TYPE II

MATERIAL SEE PARTS LIST **FINISH** 63 µinch

CALIFORNIA INSTITUTE OF TECHNOLOGY
MASSACHUSETTS INSTITUTE OF TECHNOLOGY

SYSTEM ADVANCED LIGO **SUB-SYSTEM** VE

PART NAME ALIGO, VE, VIEWPORT GUARD ASSY., FLANGE MT. COUPLER

DESIGNER E.SANCHEZ **DATE** 20 JUN 2011 **SIZE** DWG. NO. B **D1101169** **REV.** v1

DRAFTER E.SANCHEZ **DATE** 20 JUN 2011

CHECKER **APPROVAL**

SCALE: 1:4 **PROJECTION:** **SHEET 1 OF 1**