

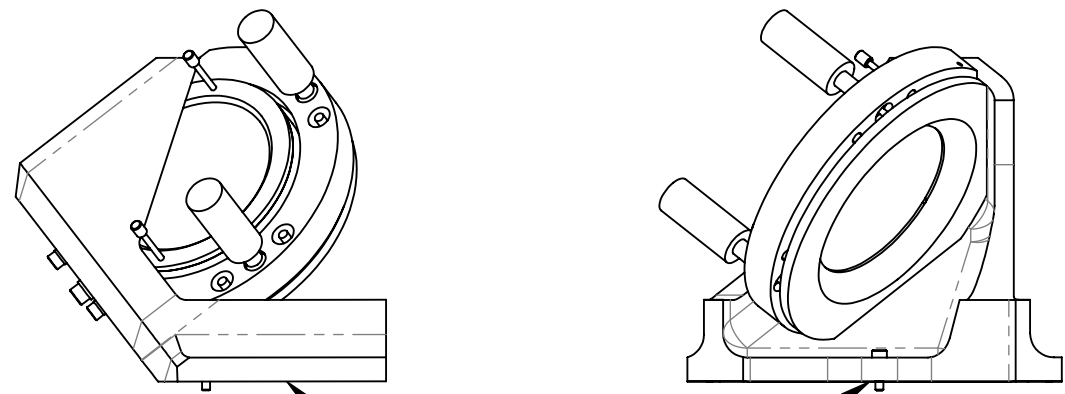
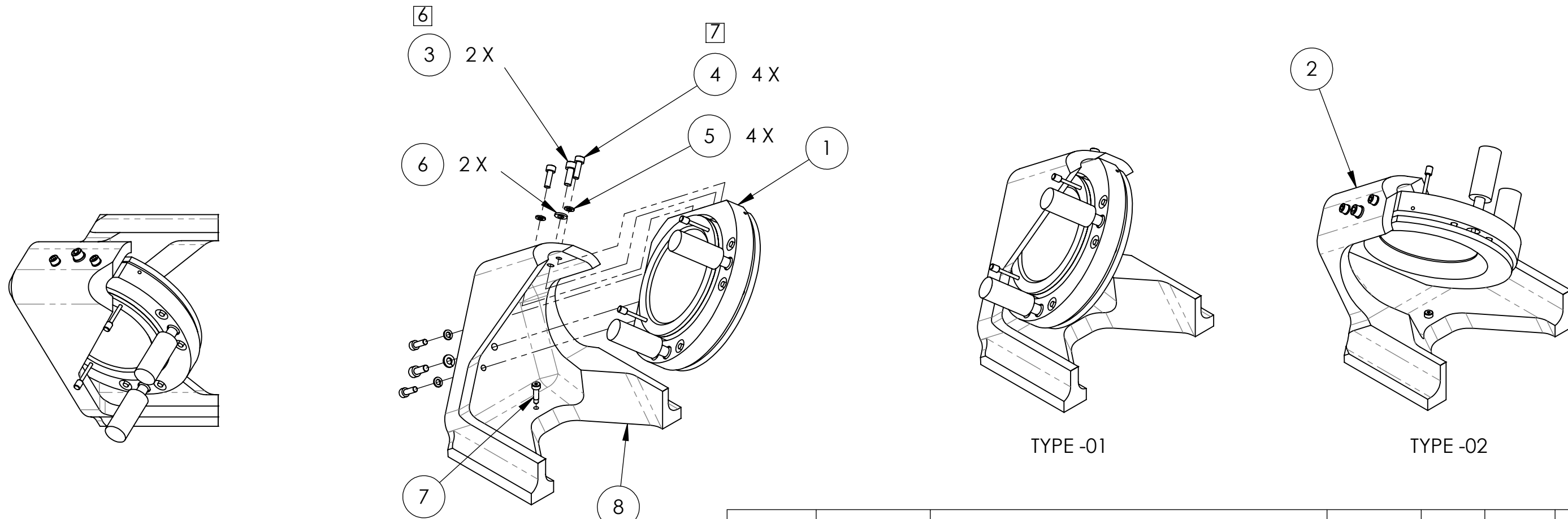
D1101145\_TOP PERISCOPE ASSY, H2 CO2P, PART PDM REV: X-021, DRAWING PDM REV: X-014

NOTES CONTINUED:

- 5 INTERFACE TO D1003221
- 6 TORQUE TO 73 IN-LB [8 N-m]
- 7 TORQUE TO 44 IN-LB [5 N-m]

TYPE (CONFIGURATION)	DESCRIPTION
-01	αLIGO, TCS, H2, X-ARM (SHOWN)
-02	αLIGO, TCS, H2, Y-ARM (MIRROR OF -01)

REV.	DATE	DCN #	DRAWING TREE #
v1	27 JUL 2011	E1100655-v1	E1100656-v1



ITEM NO.	PART NUMBER	DESCRIPTION	MATERIAL	REQ/-01	REQ/-02	SPARE	TOTAL
8	D1101144-01	TOP PERISCOPE FIXTURE, H2 CO2P	6061 Alloy	1	-	0	1
7	SHCV-4420	SCREW, SHOULDER, HEX DRIVE, #8-32, SL=.5, THR.=.1875	303 SST	1	1	2	4
6	MLW-06	WASHER, LOCK, 6.1MM ID, 11.8MM OD, 1.6 THICK	A2 SSTL	2	2	2	6
5	MLW-05	WASHER, LOCK, 5.1MM ID, 9.2MM OD, 1.2 THICK	A2 SSTL	4	4	2	10
4	MC-516-N	SHCS M5 X 16	A2 SSTL	4	4	2	10
3	MC-616-N	SHCS M6 X 16	A2 SSTL	2	2	2	6
2	D1101144-02	TOP PERISCOPE FIXTURE, H2 CO2P	6061 Alloy	-	1	0	1
1	SL101-PZA12	MIRROR MOUNT ASSY	N/A	1	1	0	2

PARTS LIST

NOTES AND TOLERANCES: (UNLESS OTHERWISE SPECIFIED)

1. INTERPRET DRAWING PER ASME Y14.5-1994.  
 2. REMOVE ALL SHARP EDGES, .005-.015, FOR MACHINED PARTS. ROUND ALL EDGES APPROXIMATELY R.02 FOR SHEET METAL PARTS.  
 3. DO NOT SCALE FROM DRAWING.  
 4. ALL MACHINING FLUIDS MUST BE FULLY SYNTHETIC, FULLY WATER SOLUBLE AND FREE OF SULFUR, SILICONE, AND CHLORINE.

DIMENSIONS ARE IN INCHES	TOLERANCES:	ANGULAR ± °
.XX ±	.XXX ±	
MATERIAL	FINISH	
N/A	N/A	

CALIFORNIA INSTITUTE OF TECHNOLOGY MASSACHUSETTS INSTITUTE OF TECHNOLOGY		PART NAME TOP PERISCOPE MOUNT ASSEMBLY, H2 CO2P	
SYSTEM	SUB-SYSTEM	DESIGNER	DATE
ADVANCED LIGO	AOS	A. LYNCH	05 JUL 2011
NEXT ASSY	D1003193	CHECKER	DATE
		M. JACOBSON	27 JUL 2011
		APPROVAL	DATE
		P. WILLEMS	11 JUL 2011
SIZE DWG. NO. <b>B</b> D1101145		REV.	v1
SCALE: 1:4 PROJECTION:		SHEET 1 OF 1	