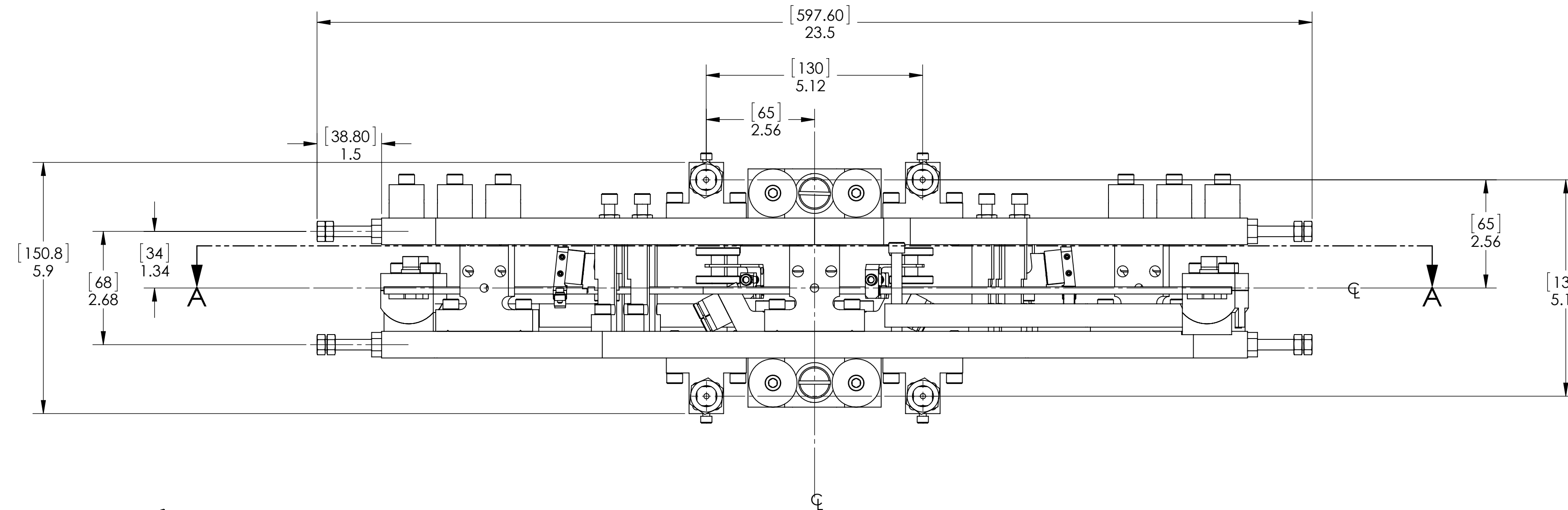
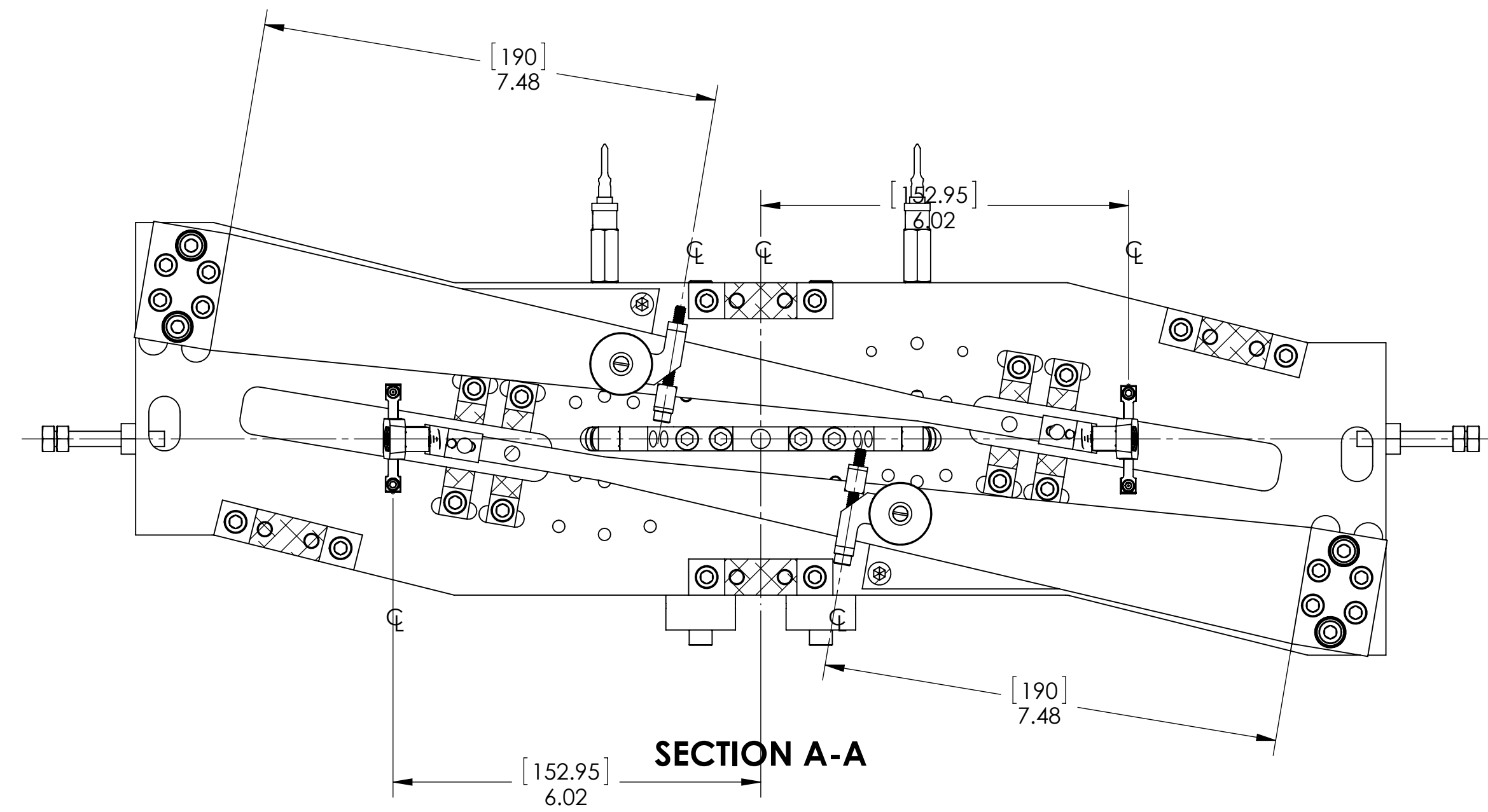


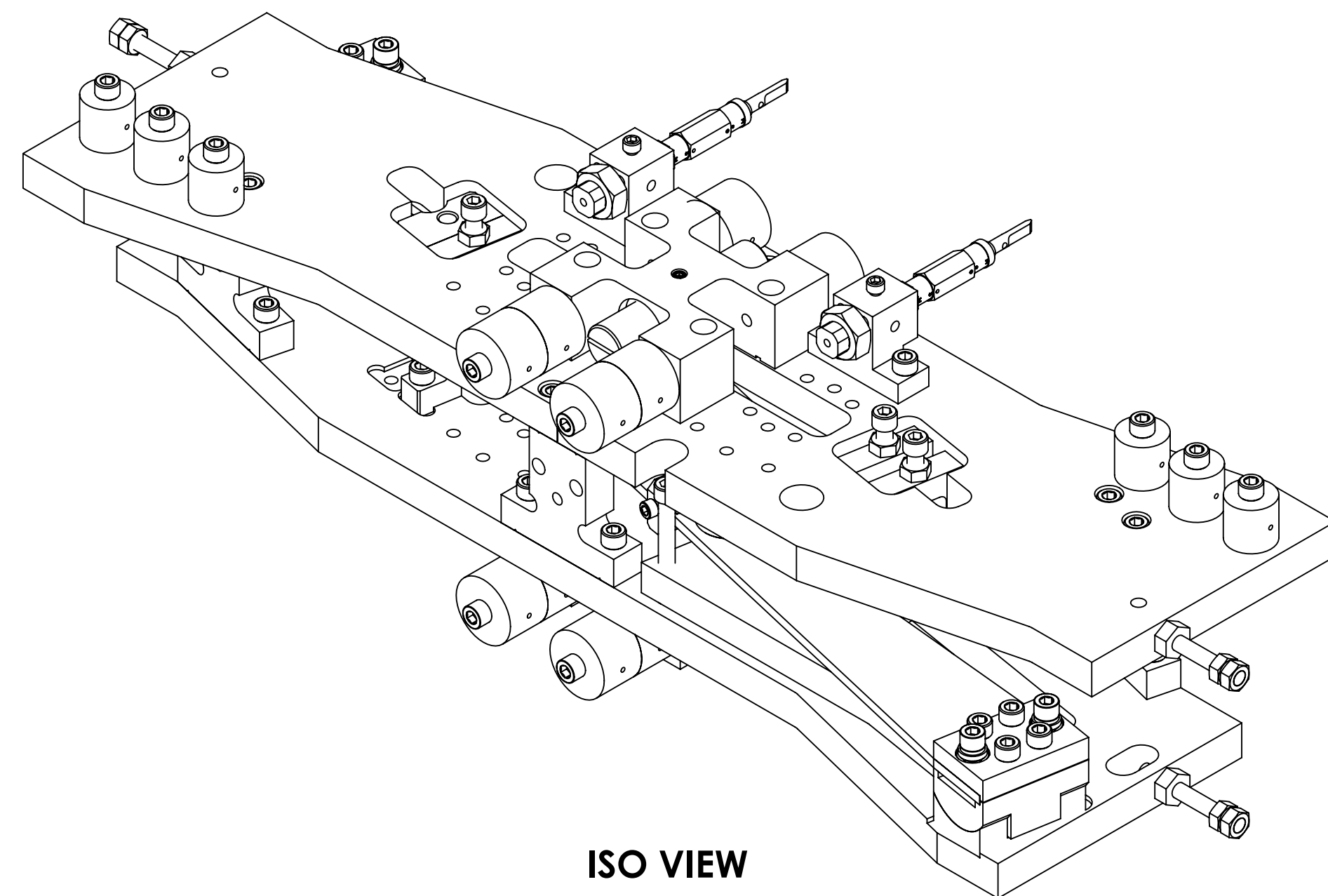
UI MASS - MAIN CHAIN

(SEE D060375 FOR ASSEMBLY PROCESS)

REV.	DATE	DCN #	DRAWING TREE #
v1	08 JAN 2014	-	-
v2	01 OCT 2014	E1300970-x0	-
v3	25 MAR 2016	E1600088-x0	-



UI MASS - MAIN CHAIN WITH REF. DIMS



ITEM NO.	PART NUMBER	DESCRIPTION	MATERIAL	QTY.
32	95966A332 MCMAS- CARR OR EQ.	SCREW, SHC, 8-32 X .75 LG. (CAPTIVE)	18-8 SSSL	4
31	D1500224-102	QUAD, SUS, UIM STOP BRIDGE (REDESIGNED)	6061-T6 Al	1
30	D1500224-101	QUAD, SUS, UIM STOP BRIDGE, INNER ADAPTER	6061-T6 Al	1
29	D1500228-02	QUAD, SUS, BOUNCE & ROLL MODE DAMPER	N/A	1
28	D1400298-02	ALIGO, SUS, NON-MAGNETIC BLADE DAMPER ASSY.	N/A	1
27	D1400298-01	ALIGO, SUS, NON-MAGNETIC BLADE DAMPER ASSY.	N/A	1
26	1185-4EN375 EMHART OR EQ.	HELICOIL, 1/4-20 X .375 LG.	NITRONIC 60	20
25	1185-4EN250 EMHART OR EQ.	HELICOIL, 1/4-20 X .25 LG.	NITRONIC 60	4
24	N-2520-A UC COMPONENTS OR EQ.	HEX NUT, 1/4-20 UNC, Ag PLATED	304, 316 OR 302 SSSL	11
23		SCREW, SHC, 1/4-20 X 2.00, ROUNDED END	300 SSSL	5
22	C-2032-N UC COMPONENTS OR EQ.	SHCS, 1/4-20 X 2" L, 18-8 SSSL	18-8 SSSL	4
21	C-2020-N UC COMPONENTS OR EQ.	SCREW, SHC, 1/4-20 X 1-1/4, 18-8 SST	Ag-PLATED 300 SSSL	4
20	C-2016-NA UC COMPONENTS OR EQ.	SCREW, SHC, 1/4-20 X 1.0 LG, Ag PLATED	Ag-PLATED 300 SSSL	44
19	92158A367 MCMAS- CARR OR EQ.	SET SCREW 10-32 X .187 LG	316 SSSL	2
18	91944A028 MCMAS- CARR OR EQ.	LEVELING WASHER, 1/4" SCREW SIZE	18-8 SSSL	4
17	D1100785-375	WASHER, FLAT, .25 X .375 O.D.	NITRONIC 60	4
16	D1101080	QUAD UIM PITCH ADJUSTER	316 SSSL	2
15	D060380	ALIGO, SUS, QUAD N-PTYPE UI MASS, BLADE CLAMP (TOP HALF)	304 SSSL	2
14	D060359-100	MASS, ALIGO SUS	316 SSSL	12
13	D060359-050	ALIGO, SUS, QUAD N-PTYPE, ADDITIONAL MASS, 50 G	304 SSSL	6
12	D060237	QUAD UI MASS, BOTTOM BLADE SPRING, ALIGO SUS	MARAGING STEEL C250	2
11	D070549	ALIGO, SUS, ETM/ITM LOWER STRUCTURE, UIM EARTHQUAKE STOP	304/316 S.S.T	4
10	D060422	ALIGO, SUS, QUAD UI MASS, WIRE CLAMP	N/A	2
9	D060399	ALIGO, SUS, QUAD TOP MASS N-PTYPE, STOP BRIDGE	6061-T6 Al	2
8	D1101079	QUAD UIM PITCH ADJUSTER TURRET, ALIGO SUS	6061-T6 Al	2
7	D060397	ALIGO, SUS, TOP MASS QUAD N-PTYPE, TOP MASS SPACER	304 SSSL	4
6	D1100938	UI MASS FLAG MOUNT ASSY, ALIGO SUS	SEE BOM	4
5	D060384	QUAD N-PTYPE UI MASS, MIDDLE WIRE CLAMP, ALIGO SUS	N/A	2
4	D060382	ALIGO, SUS, QUAD N-PTYPE UI MASS, UI MASS TOP PLATE	6061-T6 Al	2
3	D060378	ALIGO, SUS, QUAD N-PTYPE UI MASS, BLADE TIP Z POSITION ADJ (BTM HALF)	304, 316 OR 302 SSSL	2
2	D060377	ALIGO, SUS, QUAD N-PTYPE UI MASS, BLADE TIP Z POSITION ADJ (BTM HALF PART 2)	6061-T6 Al	2
1	D060376	ALIGO, SUS, Quad N-PTYPE UI MASS, MASS BASE PLATE	6061-T6 Al	1

PARTS LIST

NOTES AND TOLERANCES: (UNLESS OTHERWISE SPECIFIED)		CALIFORNIA INSTITUTE OF TECHNOLOGY MASSACHUSETTS INSTITUTE OF TECHNOLOGY		PART NAME	
DIMENSIONS ARE IN INCHES [MM]		LIGO		ALIGO, SUS, QUAD UI MASS, MAIN CHAIN	
MATERIAL N/A		SUB-SYSTEM SUS		DESIGNER M.HILLARD 12 DEC 2011	
FINISH N/A μinch		NEXT ASSY D060375		DRAFTER E.SANCHEZ 08 JAN 2014	
				CHECKER SEE DCC	
				APPROVAL SEE DCC	
				SIZE DWG. NO. D1101128	
				REVISION v3	
				SCALE: 1:2 PROJECTION: SHEET 1 OF 1	

D1101128-ALIGO, SUS, QUAD UI MASS, MAIN CHAIN, PART PDM REV: X-045, DRAWING PDM REV: X-007