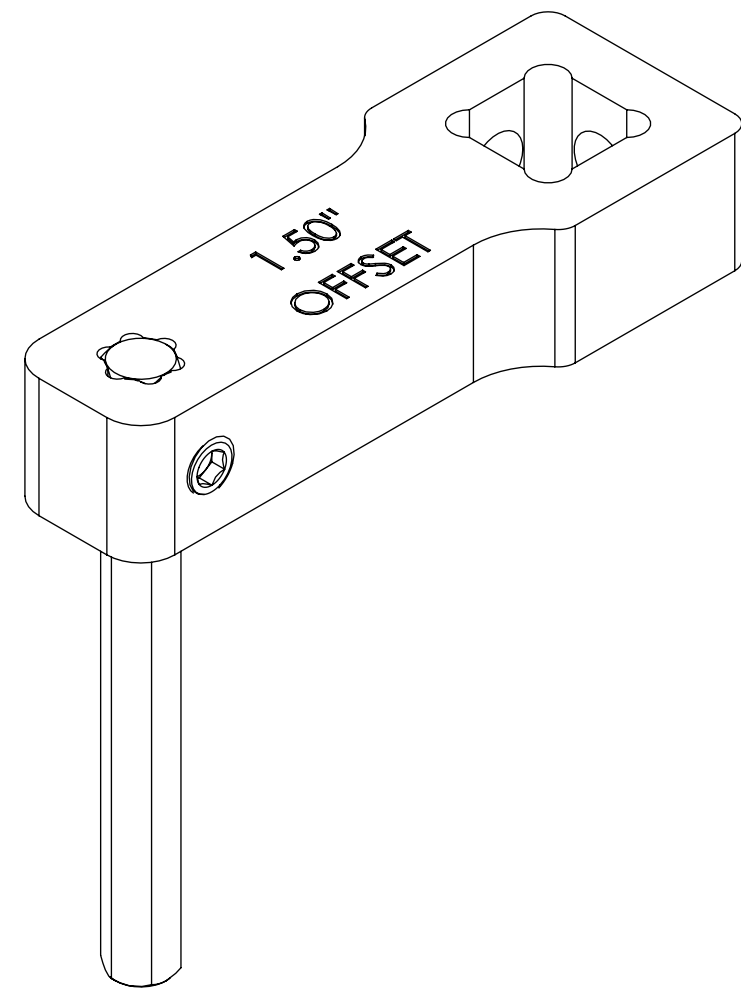
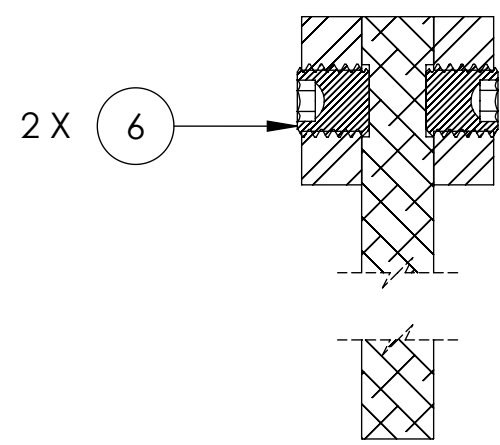


NOTES CONTINUED:
 ⑤ IDENTIFY WITH PART NUMBER, AND REVISION.
 BAG AND TAG FINISHED ASSY.

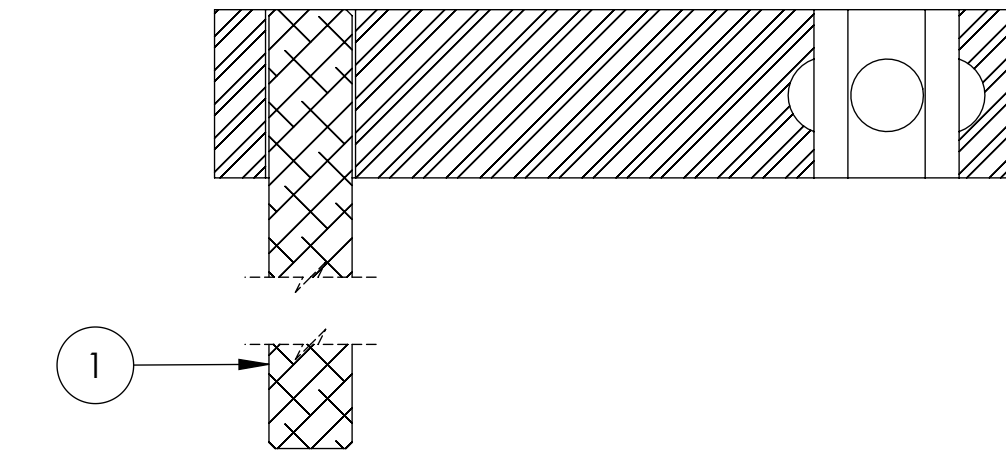
REV.	DATE	DCN #	DRAWING TREE #
v1	15 APR 2011	E1100386-x0	-
-	-	-	-
-	-	-	-



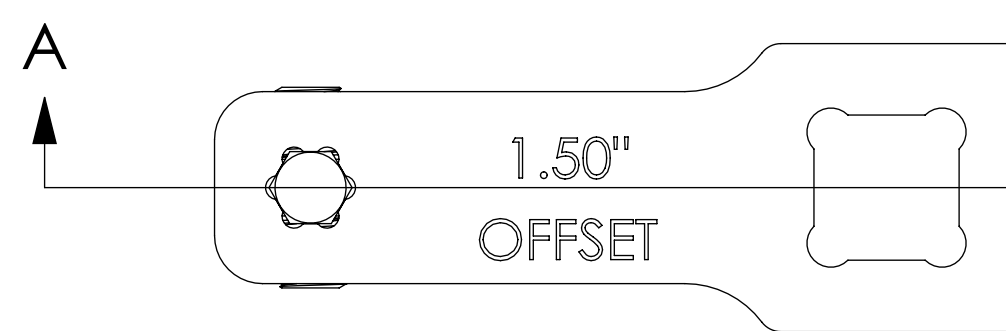
ISO VIEW
 (-150 SHOWN)



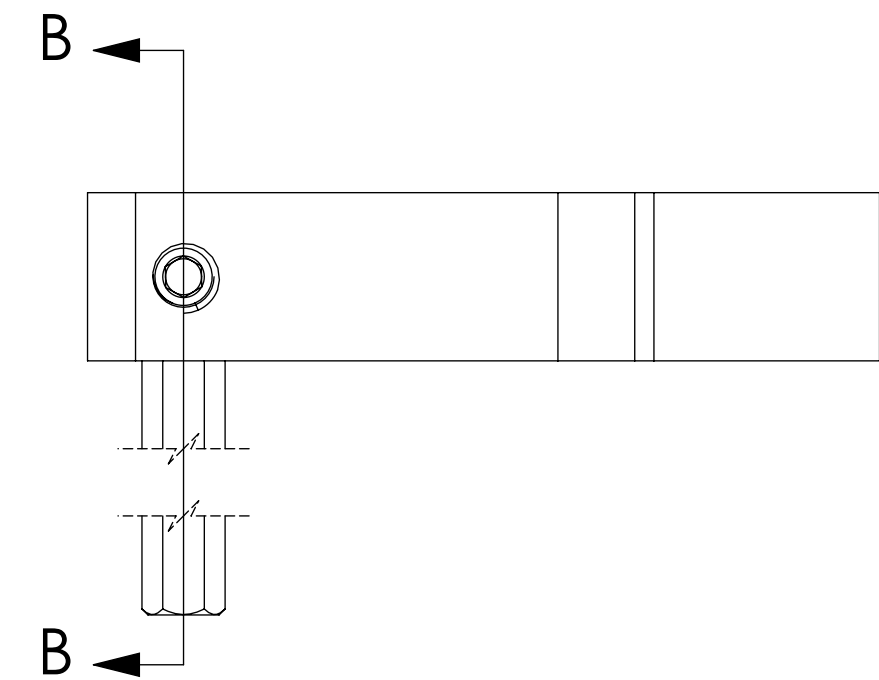
SECTION B-B



SECTION A-A



- ② -75 ONLY
- ③ -100 ONLY
- ④ -125 ONLY
- ⑤ -75 ONLY



6	MS51023-48	SCREW, SET, 10-32 X 3/16 LG.	18-8 SST	2	2	2	2
5	D1100697	OFS ADAPTER, 1.50 IN, 3/16 HEX TO 3/8 SQ. DRIVE	AISI 304	-	-	-	1
4	D1100697	OFS ADAPTER, 1.25 IN, 3/16 HEX TO 3/8 SQ. DRIVE	AISI 304	-	-	1	-
3	D1100697	OFS ADAPTER, 1.00 IN, 3/16 HEX TO 3/8 SQ. DRIVE	AISI 304	-	1	-	-
2	D1100697	OFS ADAPTER, .750 IN, 3/16 HEX TO 3/8 SQ. DRIVE	AISI 304	1	-	-	-
1	D1100702	ALIGO IMASS OFS ADAPTER ASSY., HEX WRENCH	3/16 HEX BAR, TOOL STEEL, BONDHUS OR EQ.	1	1	1	1
ITEM NO.	PART NUMBER	DESCRIPTION	MATERIAL	D1100704-75/REQ		D1100704-100/QTY.	
				PARTS LIST			
				D1100704-125/QTY.		D1100704-150/QTY.	

NOTES AND TOLERANCES: (UNLESS OTHERWISE SPECIFIED)

DIMENSIONS ARE IN

TOLERANCES:
 .XX ± .0
 .XXX ± .005

ANGULAR ± 1.0°

1. INTERPRET DRAWING PER ASME Y14.5-1994.
2. REMOVE ALL SHARP EDGES, .005-.015. FOR MACHINED PARTS. ROUND ALL EDGES APPROXIMATELY R.02 FOR SHEET METAL PARTS.
3. DO NOT SCALE FROM DRAWING.
4. ALL MACHINING FLUIDS MUST BE FULLY SYNTHETIC, FULLY WATER SOLUBLE AND FREE OF SULFUR, SILICONE, AND CHLORINE.

MATERIAL

N/A

FINISH

N/A μinch

LIGO CALIFORNIA INSTITUTE OF TECHNOLOGY
 MASSACHUSETTS INSTITUTE OF TECHNOLOGY

SYSTEM

ADVANCED LIGO

NEXT ASSY

N/A

PART NAME

ALIGO IMASS OFS ADAPTER ASSY. 3/16 HEX

DESIGNER

Esanchez 15 APR 2011

DRAFTER

Esanchez 15 APR 2011

CHECKER

APPROVAL

SIZE

DWG. NO.

c

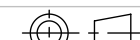
D1100704

REV.

v1

SCALE: 2:1

PROJECTION:



SHEET 1 OF 1