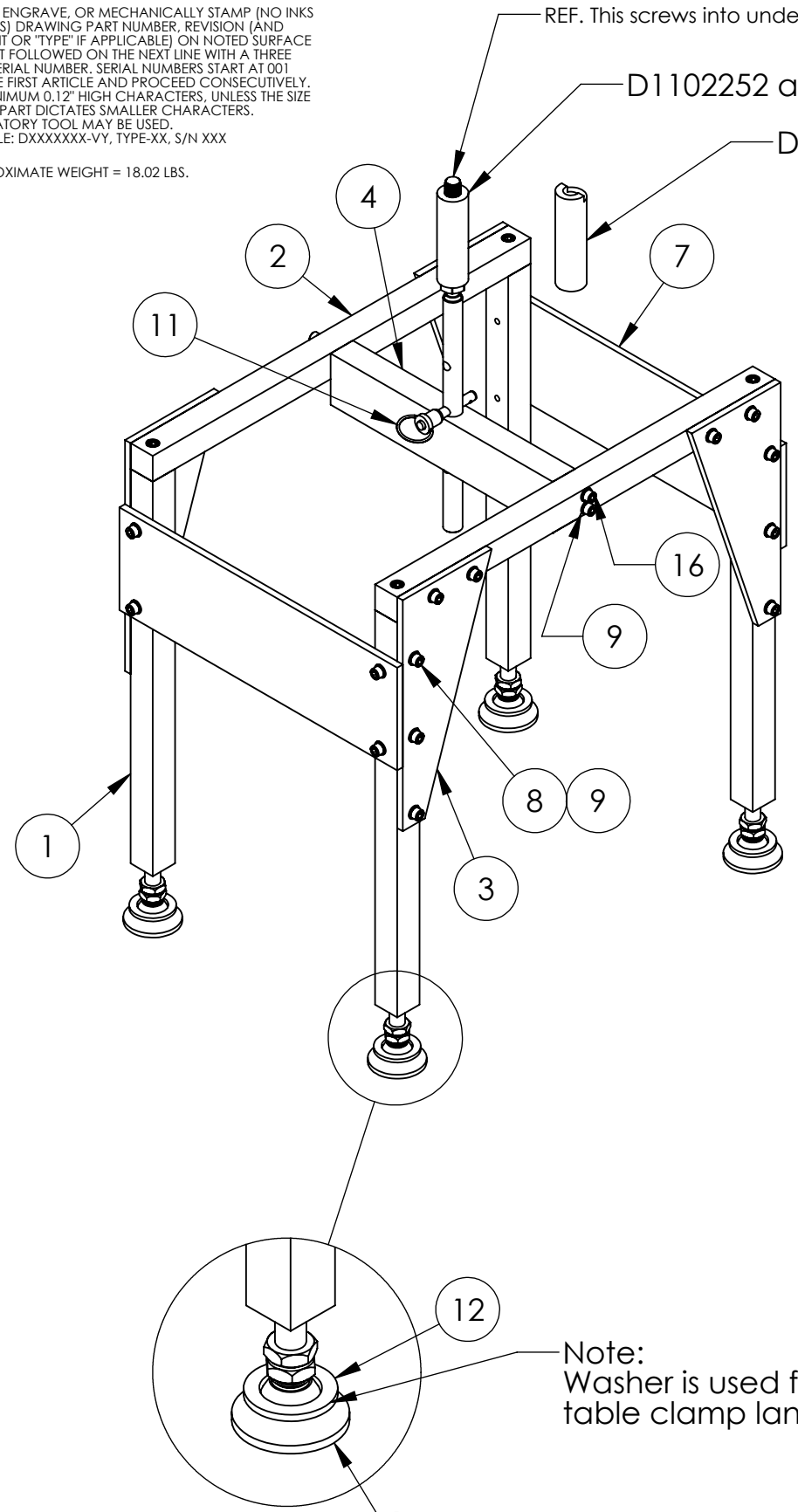


**NOTES CONTINUED:**  
 ⑤ SCRIBE, ENGRAVE, OR MECHANICALLY STAMP (NO INKS OR DYES) DRAWING PART NUMBER, REVISION (AND VARIANT OR "TYPE" IF APPLICABLE) ON NOTED SURFACE OF PART FOLLOWED ON THE NEXT LINE WITH A THREE DIGIT SERIAL NUMBER. SERIAL NUMBERS START AT 001 FOR THE FIRST ARTICLE AND PROCEED CONSECUTIVELY. USE MINIMUM 0.12" HIGH CHARACTERS, UNLESS THE SIZE OF THE PART DICTATES SMALLER CHARACTERS. A VIBRATORY TOOL MAY BE USED.  
 EXAMPLE: DXXXXXX-VY, TYPE-XX, S/N XXX

REV.	DATE	DCN #	DRAWING TREE #
v1	10 JUN 2011	E1100355-v1	-
v2	8-10-12	to follow	-
V3	10-23-12	to follow	-

6. APPROXIMATE WEIGHT = 18.02 LBS.



REF. This screws into underside of optical table at center  
 D1102252 and D1102250 used with production units  
 D1200098-v1 used with first article only WBSC6

17	92185A544	mc master carr 1/4-20 x 1.25 long SHCS	18-8	4		0
16	92196A546	[ mc master carr 1/4-20 x 1.5 long SHCS	18-8	4	2	10
15	D1200098	αLIGO TMS OPTICAL TABLE BALANCE BOLT STEP SPACER	6061-T6 Al	1		0
14	D1102252	αLIGO TMS TELE-OPT TABLE BALANCE BOLT	18-8 SSTL	1		0
13	D1102250	αLIGO TMS OPTICAL TABLE BALANCE BOLT SPACER	6061-T6 Al	1		0
12	98126A849	(McMASTER-CARR), WASHER, 1" ID X 1.5 OD x .12 T	18-8 SSTL	4	2	6
11	92384A053	(McM-Carr), QUICK RELEASE PIN, .312 DIA X 1.25 USABLE LGTH, SSTL	SSTL	1		0
10	6111K55	McMASTER, SWIVEL LEVELING MOUNT, .50-13 X 3.125 LG, 1.875 DIA BASE, 2.00 STUD	NICKEL PLATED STEEL	4		0
9	96861A600	(McMASTER-CARR).25 VENTED WASHER,) .255 ID X .468 OD X .031 THK	18-8 SSTL	32	8	40
8	C-2012-N	SOCKET HEAD CAP SCREW, 1/4-20 X .75 LG	18-8 SSTL	28	8	8
7	D1100671	αLIGO TMS TELE-OPT TABLE BALANCE BRIDGE TIE PLATE	6061-T6 Al	2		0
6	D1100653	αLIGO TMS OPTICAL TABLE SUSPENSION BRIDGE PIN	NICKEL-COPPER	1		0
5	D1100654	αLIGO TMS OPTICAL TABLE SUSPENSION BRIDGE PIN SUPP BAR	303 ROD	1		0
4	D1100655	αLIGO TMS TELE-OPT TABLE BALANCE BRIDGE PIN GUIDE BAR	6061-T6 Al	1		0
3	D1100652	αLIGO TMS TELE-OPT TABLE BALANCE BRIDGE GUSSET	6061-T6 Al	4		0
2	D1100651	αLIGO TMS TELE-OPT TABLE BALANCE BRIDGE TOP BAR	6061-T6 Al	2		0
1	D1100650	αLIGO TMS TELE-OPT TABLE BALANCE BRIDGE LEGS	6061-T6 Al	4		0
ITEM NO.	PART NUMBER	DESCRIPTION	MATERIAL	1/REQ	SPARE	TOTAL

DETAIL D  
SCALE 6 : 16

**NOTES AND TOLERANCES: (UNLESS OTHERWISE SPECIFIED)**  
 DIMENSIONS ARE IN INCHES  
 TOLERANCES:  
 .XX ± .02  
 .XXX ± .005  
 ANGULAR ± 1.0°  
 1. INTERPRET DRAWING PER ASME Y14.5-1994.  
 2. REMOVE ALL SHARP EDGES, .005-.015, FOR MACHINED PARTS. ROUND ALL EDGES APPROXIMATELY R.02 FOR SHEET METAL PARTS.  
 3. DO NOT SCALE FROM DRAWING.  
 4. ALL MACHINING FLUIDS MUST BE FULLY SYNTHETIC, FULLY WATER SOLUBLE AND FREE OF SULFUR, SILICONE, AND CHLORINE.

**PARTS LIST**

**LIGO** CALIFORNIA INSTITUTE OF TECHNOLOGY MASSACHUSETTS INSTITUTE OF TECHNOLOGY

SYSTEM: ADVANCED LIGO SUB-SYSTEM: AOS

PART NAME: αLIGO TMS TELE-OPT TABLE BALANCE BRIDGE ASSY

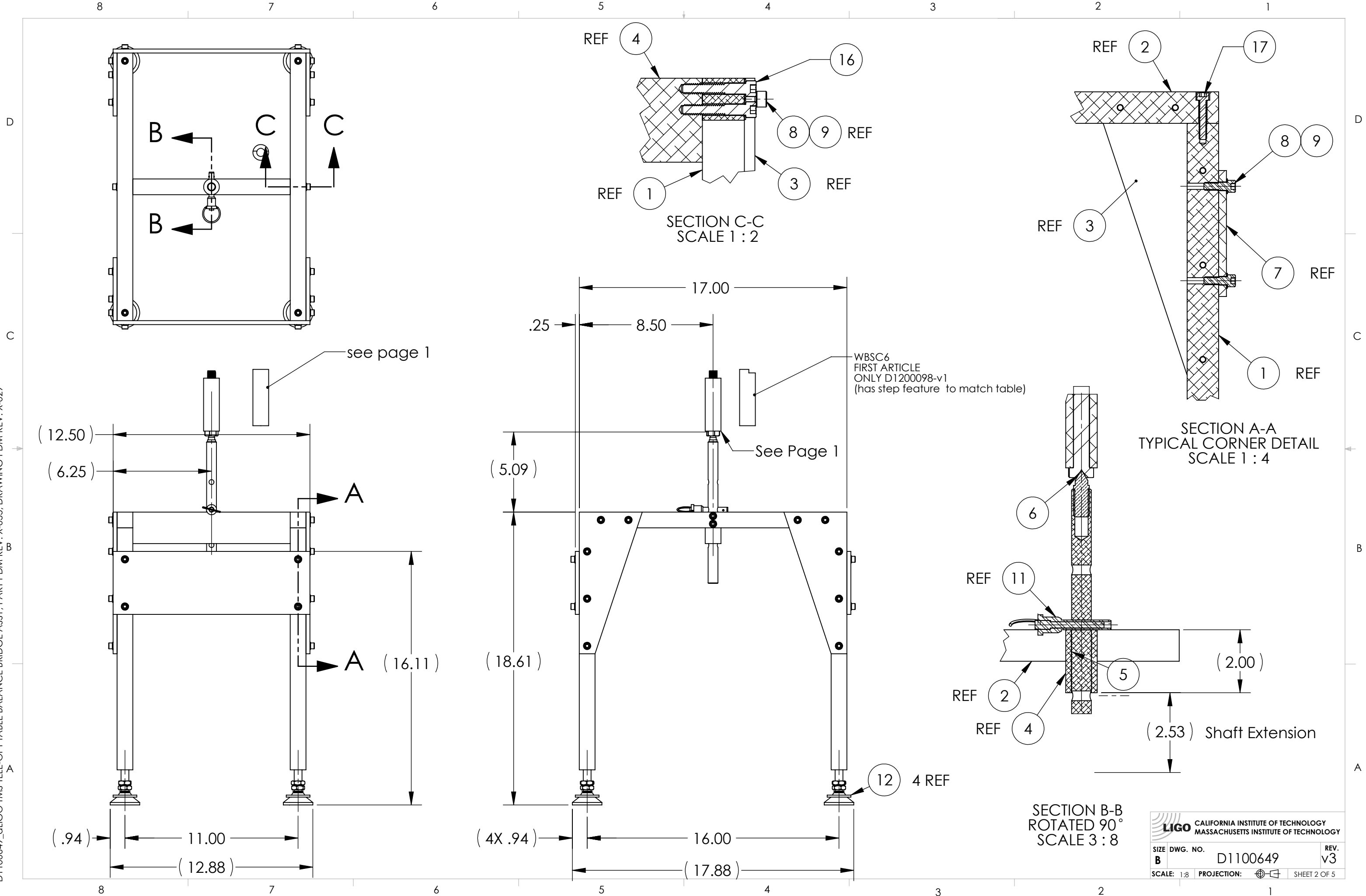
DESIGNER: J. TERRAZAS 12 APR 2011  
 DRAFTER: J. TERRAZAS 17 APR 2011  
 CHECKER: k mailand 10-23-12  
 APPROVAL:

SIZE DWG. NO. B  
**D1100649**  
 REV. v3

SCALE: 1:8 PROJECTION: SHEET 1 OF 5

D1100649\_αLIGO TMS TELE-OPT TABLE BALANCE BRIDGE ASSY, PART PDM REV: X-055, DRAWING PDM REV: X-029

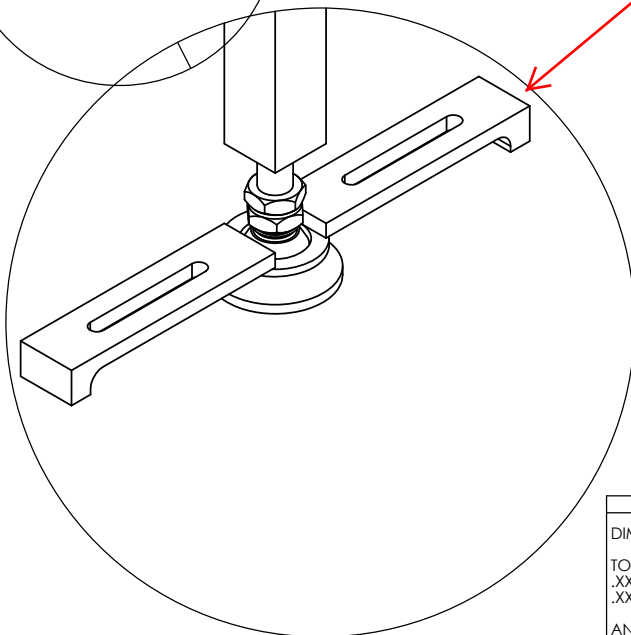
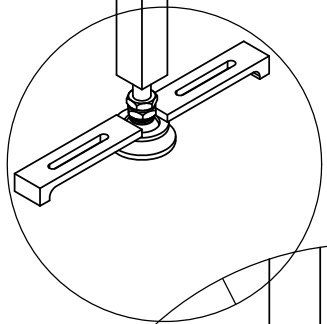
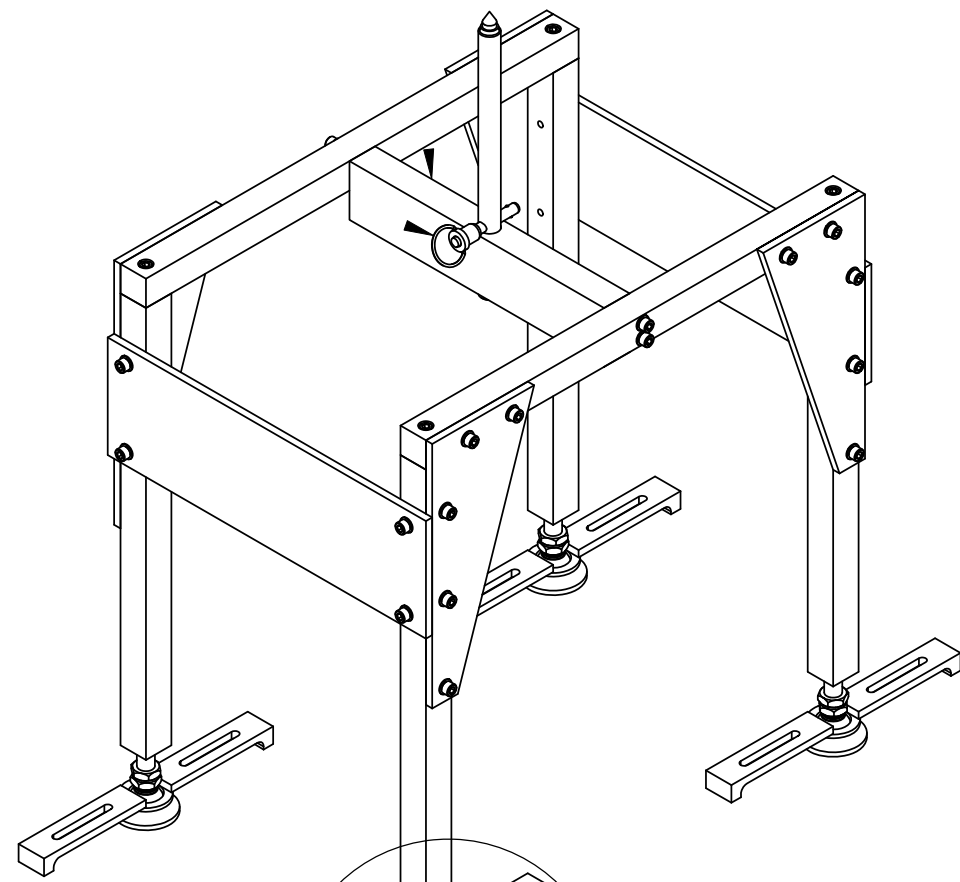
D1100649\_TMS TELE-OPT TABLE BALANCE BRIDGE ASSY, PART PDM REV: X-055, DRAWING PDM REV: X-029



**LIGO** CALIFORNIA INSTITUTE OF TECHNOLOGY  
MASSACHUSETTS INSTITUTE OF TECHNOLOGY

SIZE	DWG. NO.	REV.
B	D1100649	v3
SCALE: 1:8	PROJECTION:	SHEET 2 OF 5

D1100649\_d1100649 TMS TELE-OPT TABLE BALANCE BRIDGE ASSY, PART PDM REV: X-018, DRAWING PDM REV: X-009



DETAIL F  
SCALE 6:16

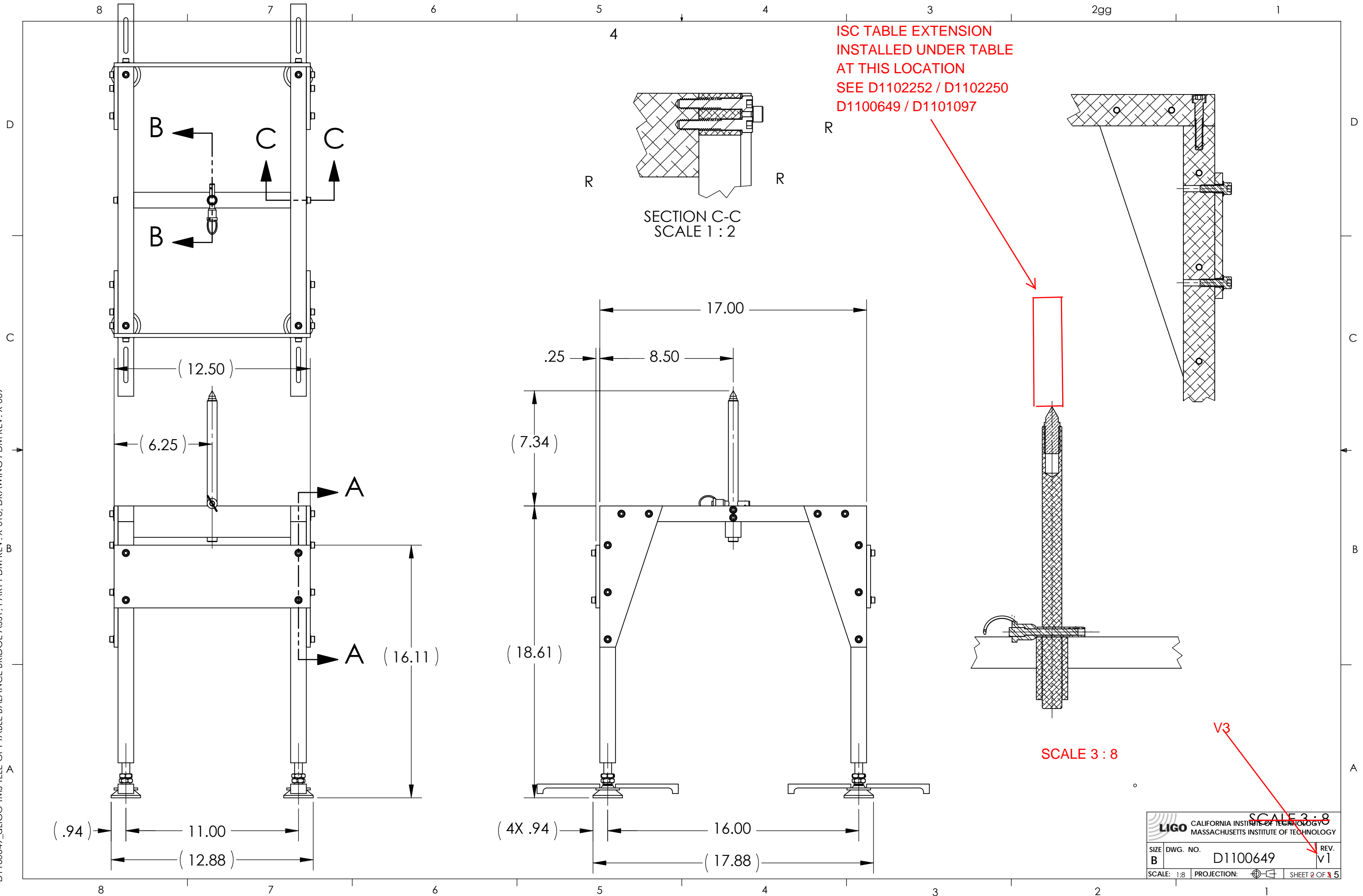
PAGE 3 TO 5 ARE REFERENCE  
VIEWS SHOWING BRIDGE IN USE

TABLE CLAMP

V3

<b>NOTES AND TOLERANCES: (UNLESS OTHERWISE SPECIFIED)</b>				<b>LIGO</b> CALIFORNIA INSTITUTE OF TECHNOLOGY MASSACHUSETTS INSTITUTE OF TECHNOLOGY		PART NAME		aLIGO TMS TELE-OPT TABLE BALANCE BRIDGE ASSY									
DIMENSIONS ARE IN INCHES				1. INTERPRET DRAWING PER ASME Y14.5-1994. 2. REMOVE ALL SHARP EDGES, .005-.015, FOR MACHINED PARTS. ROUND ALL EDGES APPROXIMATELY R.02 FOR SHEET METAL PARTS. 3. DO NOT SCALE FROM DRAWING. 4. ALL MACHINING FLUIDS MUST BE FULLY SYNTHETIC, FULLY WATER SOLUBLE AND FREE OF SULFUR, SILICONE, AND CHLORINE.		SYSTEM	ADVANCED LIGO	SUB-SYSTEM	AOS	DESIGNER	J. TERRAZAS	12 APR 2011	SIZE	DWG. NO.	REV.		
TOLERANCES: .XX ± .02 .XXX ± .005				MATERIAL				N/A				B		D1100649		v1	
ANGULAR ± 1.0°				FINISH		N/A μinch				NEXT ASSY		TOOLING					
								CHECKER				SCALE: 1:8		PROJECTION:		SHEET 1 OF 35	

D1100649\_TMS TELE-OPT TABLE BALANCE BRIDGE ASSY, PART PDM REV: X-018, DRAWING PDM REV: X-009

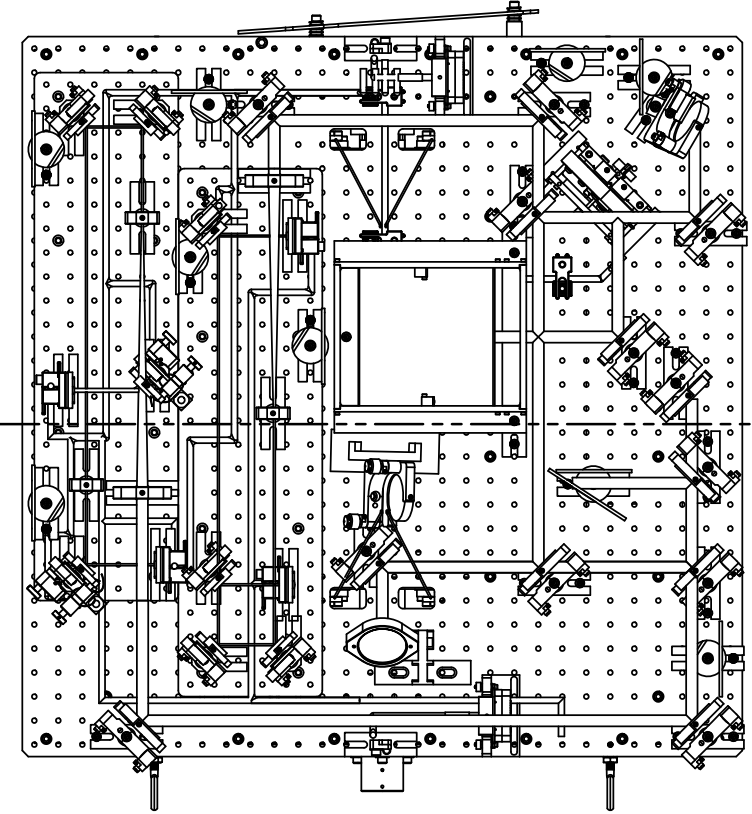


		CALIFORNIA INSTITUTE OF TECHNOLOGY MASSACHUSETTS INSTITUTE OF TECHNOLOGY	
SIZE	DWG. NO.	REV.	
B	D1100649	V1	
SCALE: 1:8		PROJECTION:	SHEET 2 OF 5

D1100649\_qLIGO TMS TELE-OPT TABLE BALANCE BRIDGE ASSY, PART PDM REV: X-005, DRAWING PDM REV: X-009

8 7 6 5 4 3 2 1

D  
C  
B  
A



REFERENCE  
TMS TELESCOPE ASSY

PAGE 3 TO 5 ARE REFERENCE  
VIEWS SHOWING BRIDGE IN USE

ISC TABLE EXTENSION  
INSTALLED UNDER TABLE  
AT THIS LOCATION  
SEE D1102252 / D1102250  
D1100649 / D1101097

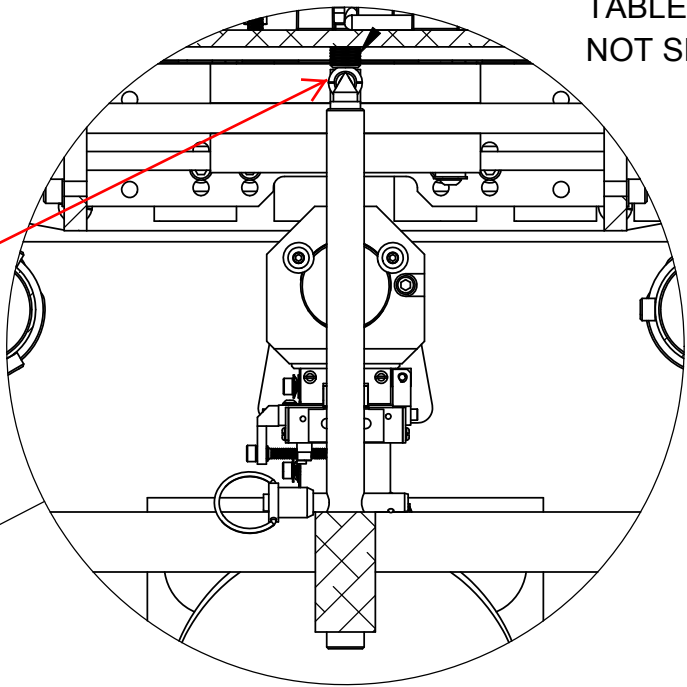
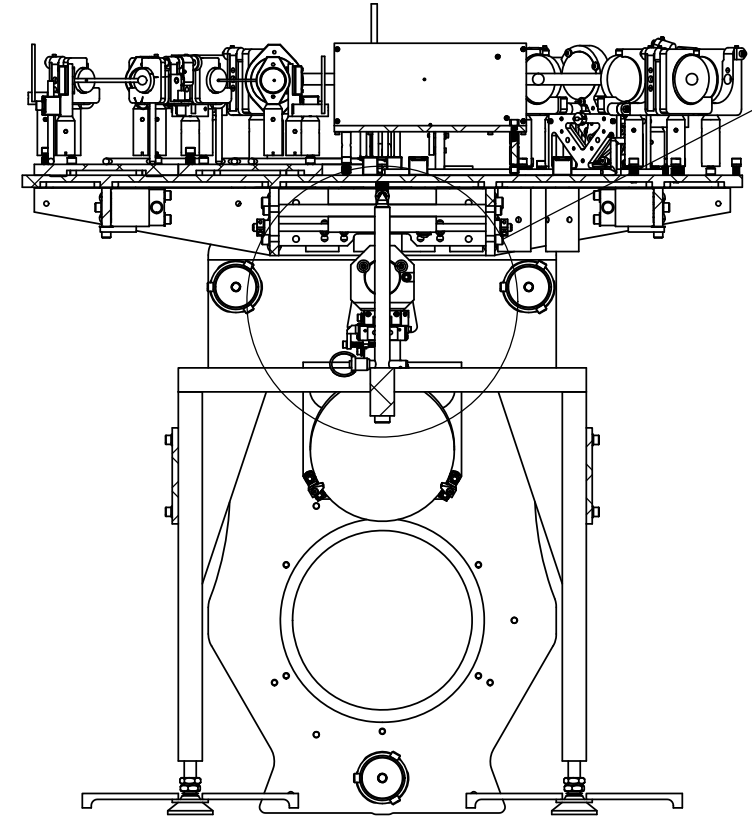
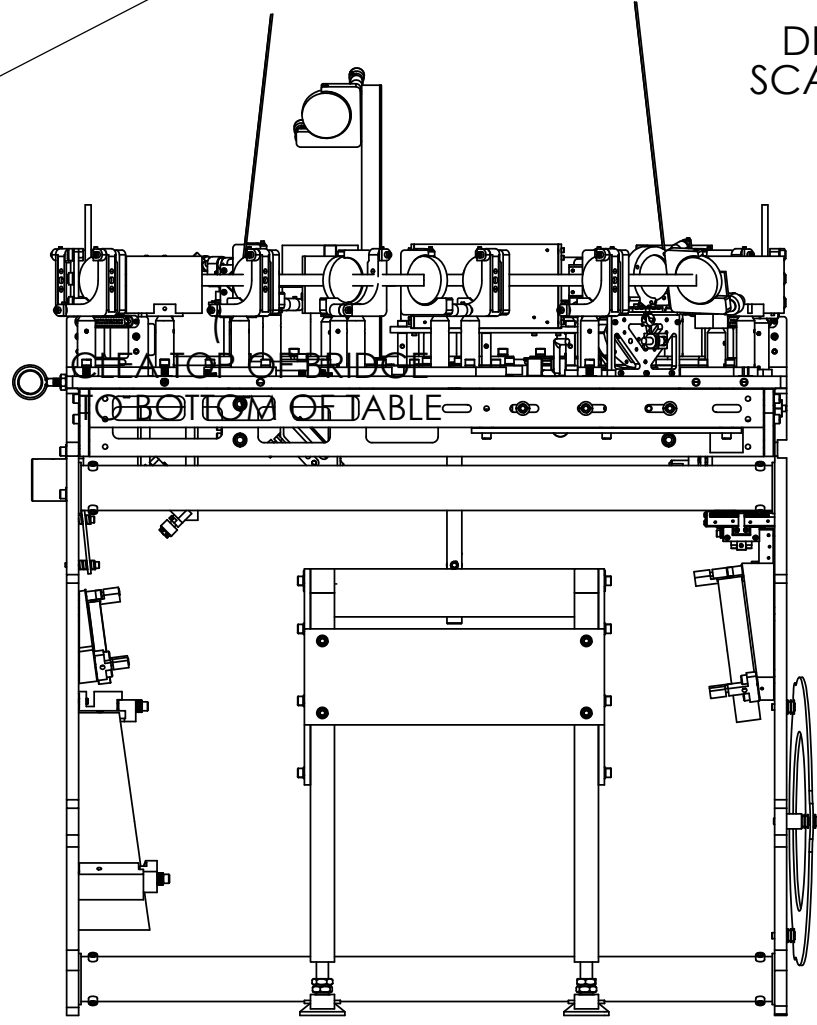


TABLE EXTENSION  
NOT SHOWN IN THIS VIEW

DETAIL E  
SCALE 5:16



SECTION D-D



CREATOR OF BRIDGE  
BOTTOM OF TABLE

V3

**LIGO** CALIFORNIA INSTITUTE OF TECHNOLOGY  
MASSACHUSETTS INSTITUTE OF TECHNOLOGY

SIZE	DWG. NO.	REV.
B	LAYOUT_D1100649	V1
SCALE: 1:8	PROJECTION:	SHEET 3 OF 35

8 7 6 5 4 3 2 1