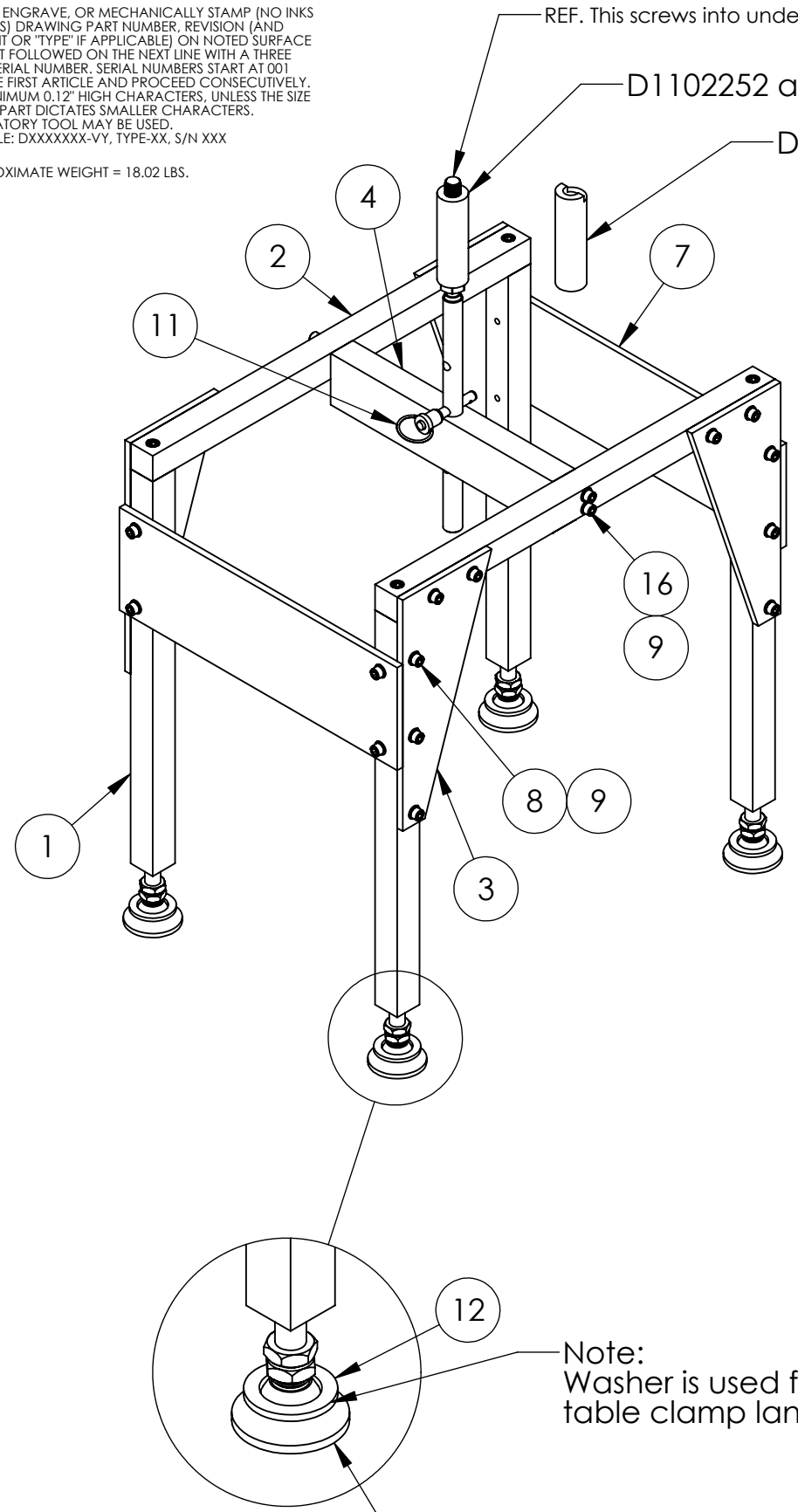


NOTES CONTINUED:
 5. SCRIBE, ENGRAVE, OR MECHANICALLY STAMP (NO INKS OR DYES) DRAWING PART NUMBER, REVISION (AND VARIANT OR "TYPE" IF APPLICABLE) ON NOTED SURFACE OF PART FOLLOWED ON THE NEXT LINE WITH A THREE DIGIT SERIAL NUMBER. SERIAL NUMBERS START AT 001 FOR THE FIRST ARTICLE AND PROCEED CONSECUTIVELY. USE MINIMUM 0.12" HIGH CHARACTERS, UNLESS THE SIZE OF THE PART DICTATES SMALLER CHARACTERS. A VIBRATORY TOOL MAY BE USED.
 EXAMPLE: DXXXXXX-VY, TYPE-XX, S/N XXX

REV.	DATE	DCN #	DRAWING TREE #
v1	10 JUN 2011	E1100355-v1	-
v2	8-10-12	to follow	-
-	-	-	-

6. APPROXIMATE WEIGHT = 18.02 LBS.



REF. This screws into underside of optical table at center
 D1102252 and D1102250 used with production units
 D1200098-v1 used with first article only WBSC6

16	92196A544	[mc master carr 1/4-20 x 1.25 long SHCS	18-8 SSTL	4	2	10
15	D1200098	αLIGO TMS OPTICAL TABLE BALANCE BOLT STEP SPACER	6061-T6 Al	1		0
14	D1102252	αLIGO TMS TELE-OPT TABLE BALANCE BOLT	18-8 SSTL	1		0
13	D1102250	αLIGO TMS OPTICAL TABLE BALANCE BOLT SPACER	6061-T6 Al	1		0
12	98126A849	(McMASTER-CARR), WASHER, 1" ID X 1.5 OD x .12 T	18-8 SSTL	4	2	6
11	92384A053	(McM-Carr), QUICK RELEASE PIN, .312 DIA X 1.25 USABLE LGTH, SSTL	SSTL	1		0
10	6111K55	McMASTER, SWIVEL LEVELING MOUNT, .50-13 X 3.125 LG, 1.875 DIA BASE, 2.00 STUD	NICKEL PLATED STEEL	4		0
9	96861A600	(McMASTER-CARR).25 VENTED WASHER,) .255 ID X .468 OD X .031 THK	18-8 SSTL	32	8	40
8	C-2012-N	SOCKET HEAD CAP SCREW, 1/4-20 X .75 LG	18-8 SSTL	28	8	8
7	D1100671	αLIGO TMS TELE-OPT TABLE BALANCE BRIDGE TIE PLATE	6061-T6 Al	2		0
6	D1100653	αLIGO TMS OPTICAL TABLE SUSPENSION BRIDGE PIN	NICKEL-COPPER	1		0
5	D1100654	αLIGO TMS OPTICAL TABLE SUSPENSION BRIDGE PIN SUPP BAR	303 ROD	1		0
4	D1100655	αLIGO TMS TELE-OPT TABLE BALANCE BRIDGE PIN GUIDE BAR	6061-T6 Al	1		0
3	D1100652	αLIGO TMS TELE-OPT TABLE BALANCE BRIDGE GUSSET	6061-T6 Al	4		0
2	D1100651	αLIGO TMS TELE-OPT TABLE BALANCE BRIDGE TOP BAR	6061-T6 Al	2		0
1	D1100650	αLIGO TMS TELE-OPT TABLE BALANCE BRIDGE LEGS	6061-T6 Al	4		0
ITEM NO.	PART NUMBER	DESCRIPTION	MATERIAL	1/REQ	SPARE	TOTAL

DETAIL D
 SCALE 6 : 16

NOTES AND TOLERANCES: (UNLESS OTHERWISE SPECIFIED)
 DIMENSIONS ARE IN INCHES
 TOLERANCES:
 .XX ± .02
 .XXX ± .005
 ANGULAR ± 1.0°
 1. INTERPRET DRAWING PER ASME Y14.5-1994.
 2. REMOVE ALL SHARP EDGES, .005-.015, FOR MACHINED PARTS. ROUND ALL EDGES APPROXIMATELY R.02 FOR SHEET METAL PARTS.
 3. DO NOT SCALE FROM DRAWING.
 4. ALL MACHINING FLUIDS MUST BE FULLY SYNTHETIC, FULLY WATER SOLUBLE AND FREE OF SULFUR, SILICONE, AND CHLORINE.

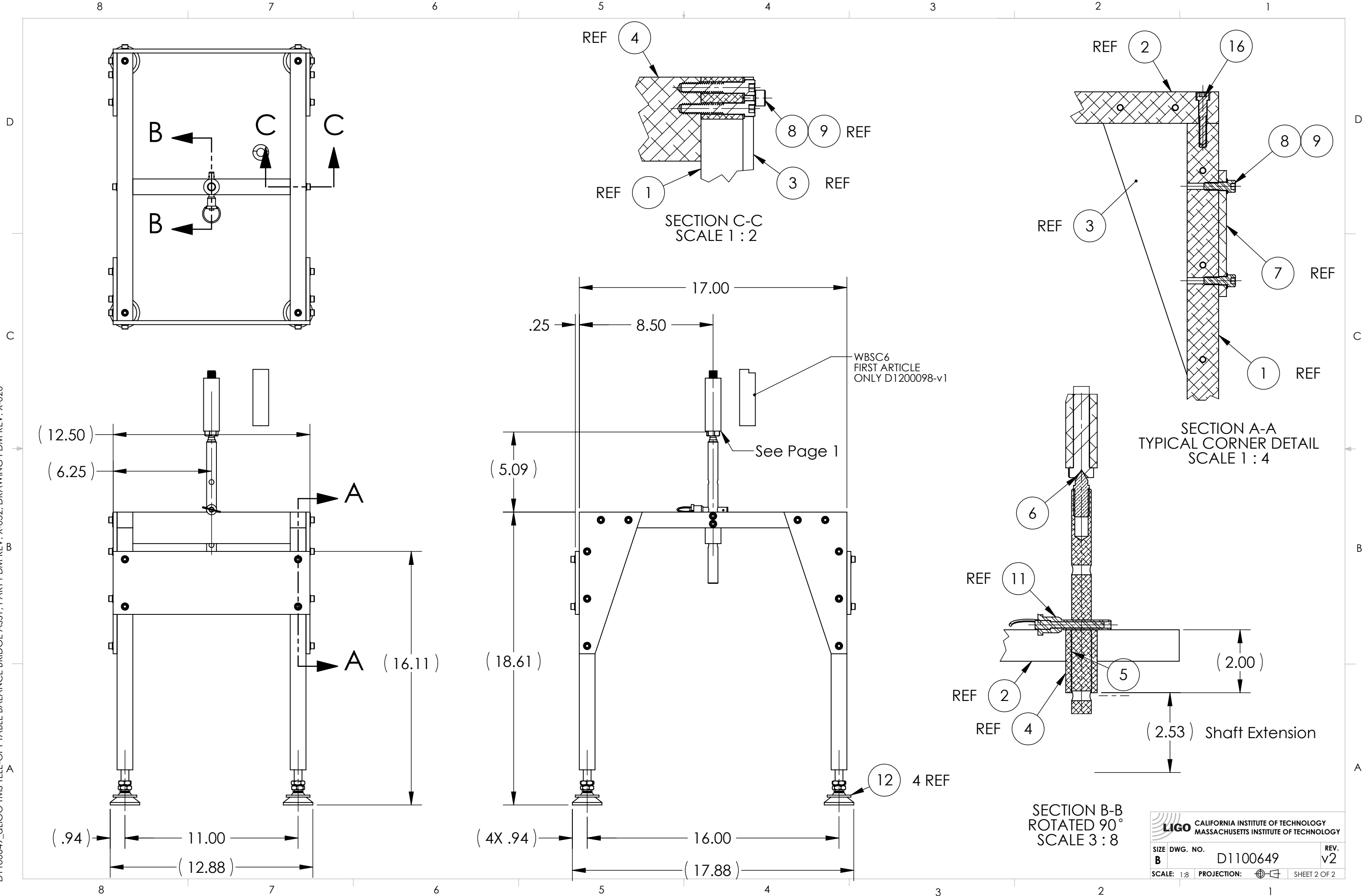
PARTS LIST

CALIFORNIA INSTITUTE OF TECHNOLOGY MASSACHUSETTS INSTITUTE OF TECHNOLOGY		PART NAME αLIGO TMS TELE-OPT TABLE BALANCE BRIDGE ASSY	
SYSTEM ADVANCED LIGO	SUB-SYSTEM AOS	DESIGNER J. TERRAZAS 12 APR 2011	SIZE DWG. NO. B D1100649
DRAFTER J. TERRAZAS 17 APR 2011	CHECKER APPROVAL	REV. v2	SCALE: 1:8 PROJECTION:

TOOLING

D1100649_αLIGO TMS TELE-OPT TABLE BALANCE BRIDGE ASSY, PART PDM REV: X-052, DRAWING PDM REV: X-026

D1100649_TMS TELE-OPT TABLE BALANCE BRIDGE ASSY, PART PDM REV: X-052, DRAWING PDM REV: X-026



LIGO CALIFORNIA INSTITUTE OF TECHNOLOGY
MASSACHUSETTS INSTITUTE OF TECHNOLOGY

SIZE	DWG. NO.	REV.
B	D1100649	v2
SCALE: 1:8	PROJECTION:	SHEET 2 OF 2