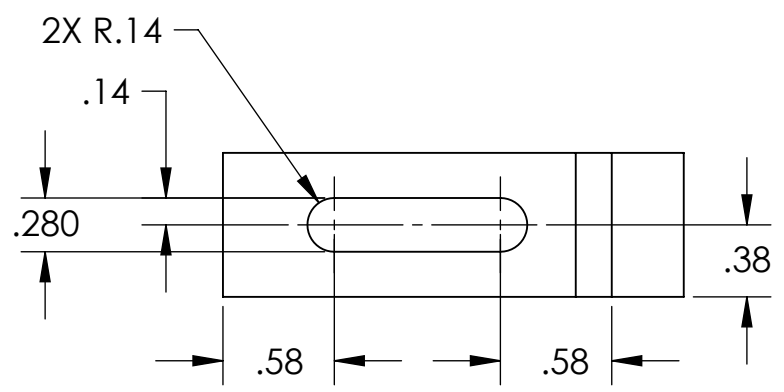
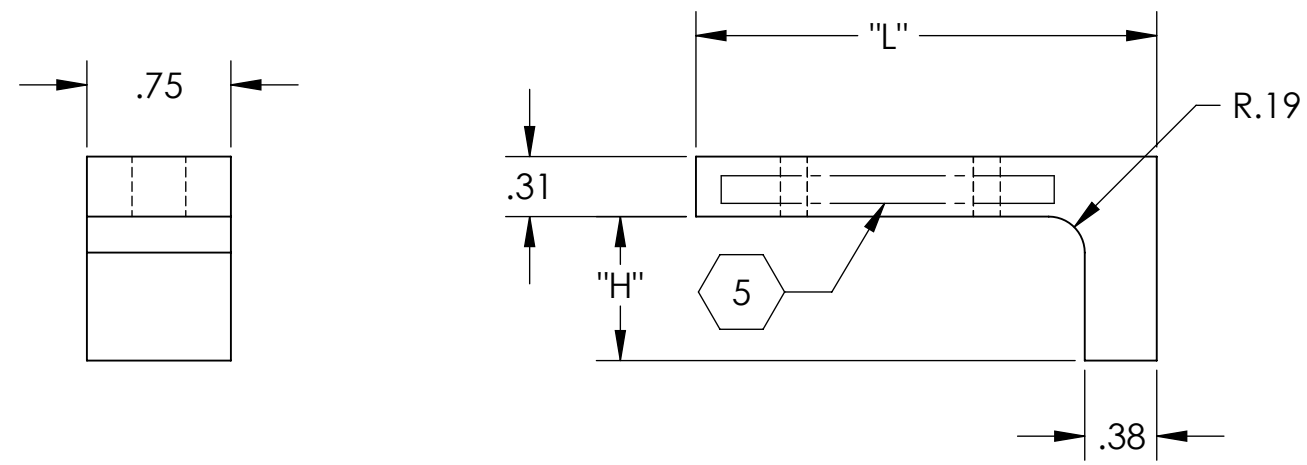


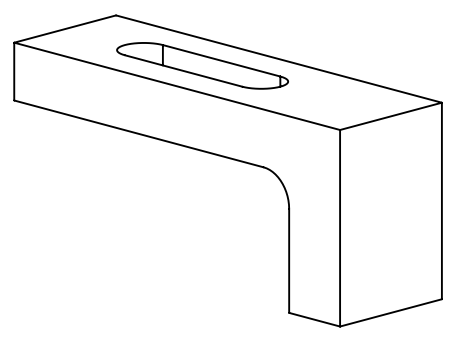
NOTES CONTINUED:

- 5. SCRIBE, ENGRAVE (A VIBRATORY TOOL MAY BE USED), LASER MARK OR MECHANICALLY STAMP (NO INKS OR DYES) DRAWING PART NUMBER, REVISION (AND VARIANT OR "TYPE" IF APPLICABLE) ON NOTED SURFACE OF PART FOLLOWED ON THE NEXT LINE WITH A THREE DIGIT SERIAL NUMBER. SERIAL NUMBERS START AT 001 FOR THE FIRST ARTICLE AND PROCEED CONSECUTIVELY. USE MINIMUM .12" HIGH CHARACTERS, UNLESS THE SIZE OF THE PART DICTATES SMALLER CHARACTERS. EXAMPLE: D1100640-v1, TYPE-01, S/N 001
- 6. APPROXIMATE WEIGHT = SEE TABLE
- 7. MACHINE ALL SURFACES TO REMOVE OXIDES AND MILL FINISH. USE OF ABRASIVE REMOVAL TECHNIQUES IS NOT ALLOWED.
- 8. ALL PARTS SHALL BE MANUFACTURED IN ACCORDANCE WITH LIGO SPECIFICATION E0900364.
- 9. ALL MATERIAL IS TO BE VIRGIN MATERIAL (i.e. NOT WELD REPAIRS OR PLUGS UNLESS APPROVED IN ADVANCE IN WRITING BY LIGO, REFER TO LIGO-E0900364.
- 10. NO REPAIRS SHALL BE MADE UNLESS APPROVED IN ADVANCE, AND IN WRITING, BY LIGO LABORATORY. IN GENERAL WELD REPAIRS AND PRESS FIT INSERT REPAIRS ARE NEVER ACCEPTABLE; THE MATERIAL SHOULD BE MADE WITH VIRGIN MATERIAL. SPECIAL CIRCUMSTANCES CAN BE REVIEWED IF / WHEN BROUGHT TO THE ATTENTION OF LIGO CONTRACTING OFFICER'S REPRESENTATIVE (COTR) THROUGH A MATERIAL REVIEW BOARD (MRB) PROCESS. REFER TO LIGO-E0900364.

| REV. | DATE        | DCN #          | DRAWING TREE # |
|------|-------------|----------------|----------------|
| v1   | 04 APR 2011 | DCN # E1100081 |                |
| v2   | 08 NOV 2012 | E1200993-x0    |                |



| PART NUMBER | CONFIGURATION  | "H" (in) | "L" (in) | W (lbs) 6 |
|-------------|----------------|----------|----------|-----------|
| D1100640-01 | D1100640-.375S | .375     | 2.40     | 0.17      |
| D1100640-02 | D1100640-.375M | .375     | 2.90     | 0.19      |
| D1100640-03 | D1100640-.375L | .375     | 3.40     | 0.21      |
| D1100640-04 | D1100640-.563S | .563     | 2.40     | 0.19      |
| D1100640-05 | D1100640-.563M | .563     | 2.90     | 0.21      |
| D1100640-06 | D1100640-.563L | .563     | 3.40     | 0.23      |
| D1100640-07 | D1100640-.750S | .750     | 2.40     | 0.20      |
| D1100640-08 | D1100640-.750M | .750     | 2.90     | 0.22      |
| D1100640-09 | D1100640-.750L | .750     | 3.40     | 0.24      |
| D1100640-10 | D1100640-1.00S | 1.00     | 2.40     | 0.22      |
| D1100640-11 | D1100640-1.00M | 1.00     | 2.90     | 0.24      |
| D1100640-12 | D1100640-1.00L | 1.00     | 3.40     | 0.26      |
| D1100640-13 | D1100640-1.20S | 1.20     | 2.40     | 0.23      |
| D1100640-14 | D1100640-1.20M | 1.20     | 2.90     | 0.26      |
| D1100640-15 | D1100640-1.20L | 1.20     | 3.40     | 0.28      |



**NOTES AND TOLERANCES: (UNLESS OTHERWISE SPECIFIED)**

DIMENSIONS ARE IN INCHES  
 TOLERANCES:  
 .XX ± .01  
 .XXX ± .005  
 ANGULAR ± 1.0°

1. INTERPRET DRAWING PER ASME Y14.5-1994.  
 2. REMOVE ALL SHARP EDGES, R.02 MIN.  
 3. DO NOT SCALE FROM DRAWING.  
 4. ALL MACHINING FLUIDS MUST BE FULLY SYNTHETIC, FULLY WATER SOLUBLE AND FREE OF SULFUR, SILICONE, AND CHLORINE.

**MATERIAL** 304 S3TL      **FINISH** 63 μinch

**SYSTEM** ADVANCED LIGO      **SUB-SYSTEM** SUS      **NEXT ASSY** MULTIPLE ASSY

**CALIFORNIA INSTITUTE OF TECHNOLOGY**  
**MASSACHUSETTS INSTITUTE OF TECHNOLOGY**

**PART NAME** AdvLIGO HAM Optics Table Dog Clamp SOS Suspensions

|                 |            |             |               |                    |                     |
|-----------------|------------|-------------|---------------|--------------------|---------------------|
| <b>DESIGNER</b> | ED CHAVEZ  | 04 APR 2011 | <b>SIZE</b>   | <b>DWG. NO.</b>    | <b>REV.</b>         |
| <b>DRAFTER</b>  | ED CHAVEZ  | 11 APR 2011 | <b>B</b>      | <b>D1100640</b>    | <b>v2</b>           |
| <b>CHECKER</b>  | S. SHANKLE | 11 APR 2011 | <b>SCALE:</b> | <b>PROJECTION:</b> | <b>SHEET 1 OF 1</b> |
| <b>APPROVAL</b> |            |             | 1:1           |                    |                     |

D1100640 AdvLIGO HAM Optics Table Dog Clamp SOS Suspensions, PART PDM REV: X-018, DRAWING PDM REV: X-002