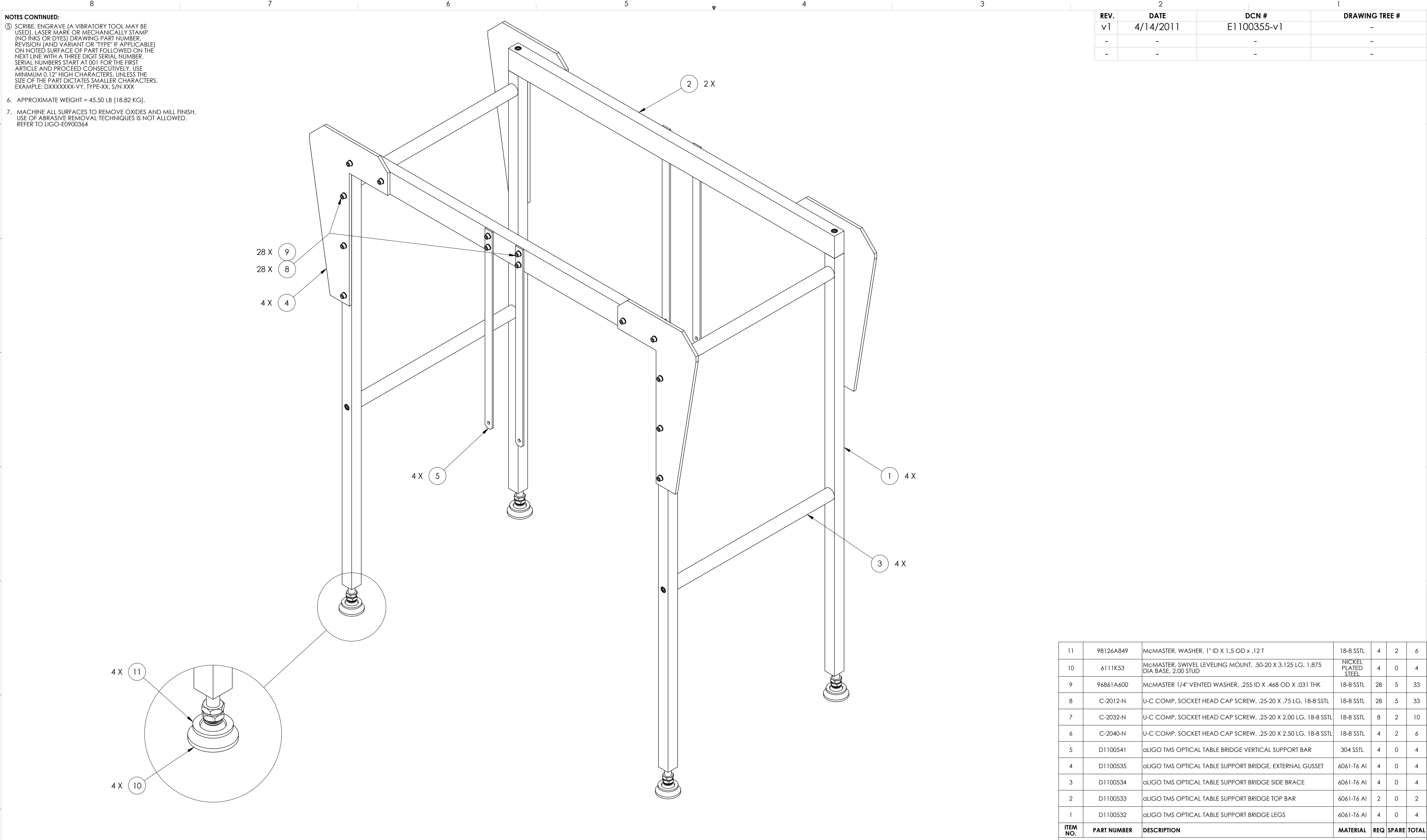


**NOTES CONTINUED:**

5. SCRIBE, ENGRAVE (A VIBRATORY TOOL MAY BE USED), LASER MARK OR MECHANICALLY STAMP (NO INKS OR DYES) DRAWING PART NUMBER, REVISION (AND VARIANT OR "TYPE" IF APPLICABLE) ON NOTED SURFACE OF PART FOLLOWED ON THE NEXT LINE WITH A THREE DIGIT SERIAL NUMBER. SERIAL NUMBERS START AT 001 FOR THE FIRST ARTICLE AND PROCEED CONSECUTIVELY. USE MINIMUM 0.12" HIGH CHARACTERS, UNLESS THE SIZE OF THE PART DICTATES SMALLER CHARACTERS. EXAMPLE: DXXXXXX-VY, TYPE-XX, S/N XXX

6. APPROXIMATE WEIGHT = 45.50 LB [18.82 KG].

7. MACHINE ALL SURFACES TO REMOVE OXIDES AND MILL FINISH. USE OF ABRASIVE REMOVAL TECHNIQUES IS NOT ALLOWED. REFER TO LIGO-E0900364



REV.	DATE	DCN #	DRAWING TREE #
v1	4/14/2011	E1100355-v1	-
-	-	-	-
-	-	-	-

ITEM NO.	PART NUMBER	DESCRIPTION	MATERIAL	REQ	SPARE	TOTAL
11	98126A849	McMASTER, WASHER, 1" ID X 1.5 OD x .12 T	18-8 SSSL	4	2	6
10	6111K53	McMASTER, SWIVEL LEVELING MOUNT, .50-20 X 3.125 LG, 1.875 DIA. BASE, 2.00 STUD	NICKEL PLATED STEEL	4	0	4
9	96861A600	McMASTER 1/4" VENTED WASHER, .255 ID X .468 OD X .031 THK	18-8 SSSL	28	5	33
8	C-2012-N	U-C COMP, SOCKET HEAD CAP SCREW, .25-20 X .75 LG, 18-8 SSSL	18-8 SSSL	28	5	33
7	C-2032-N	U-C COMP, SOCKET HEAD CAP SCREW, .25-20 X 2.00 LG, 18-8 SSSL	18-8 SSSL	8	2	10
6	C-2040-N	U-C COMP, SOCKET HEAD CAP SCREW, .25-20 X 2.50 LG, 18-8 SSSL	18-8 SSSL	4	2	6
5	D1100541	gLIGO TMS OPTICAL TABLE BRIDGE VERTICAL SUPPORT BAR	304 SSSL	4	0	4
4	D1100535	gLIGO TMS OPTICAL TABLE SUPPORT BRIDGE, EXTERNAL GUSSET	6061-T6 Al	4	0	4
3	D1100534	gLIGO TMS OPTICAL TABLE SUPPORT BRIDGE SIDE BRACE	6061-T6 Al	4	0	4
2	D1100533	gLIGO TMS OPTICAL TABLE SUPPORT BRIDGE TOP BAR	6061-T6 Al	2	0	2
1	D1100532	gLIGO TMS OPTICAL TABLE SUPPORT BRIDGE LEGS	6061-T6 Al	4	0	4

DETAIL F  
SCALE 10 : 16

DIMENSIONS ARE IN INCHES		TOLERANCES: .XX ± .02 .XXX ± .005		ANGULAR ± 1.0°	
NOTES AND TOLERANCES: (UNLESS OTHERWISE SPECIFIED)		1. INTERPRET DRAWING PER ASME Y14.5-1994. 2. REMOVE ALL SHARP EDGES, .005-.015, FOR MACHINED PARTS. ROUND ALL EDGES APPROXIMATELY R.02 FOR SHEET METAL PARTS. 3. DO NOT SCALE FROM DRAWING. 4. ALL MACHINING FLUIDS MUST BE FULLY SYNTHETIC, FULLY WATER SOLUBLE AND FREE OF SULFUR, SILICONE, AND CHLORINE.		MATERIAL: N/A	
FINISH: N/A μinch		TOOLING		NEXT ASSY	

**LIGO** CALIFORNIA INSTITUTE OF TECHNOLOGY  
MASSACHUSETTS INSTITUTE OF TECHNOLOGY

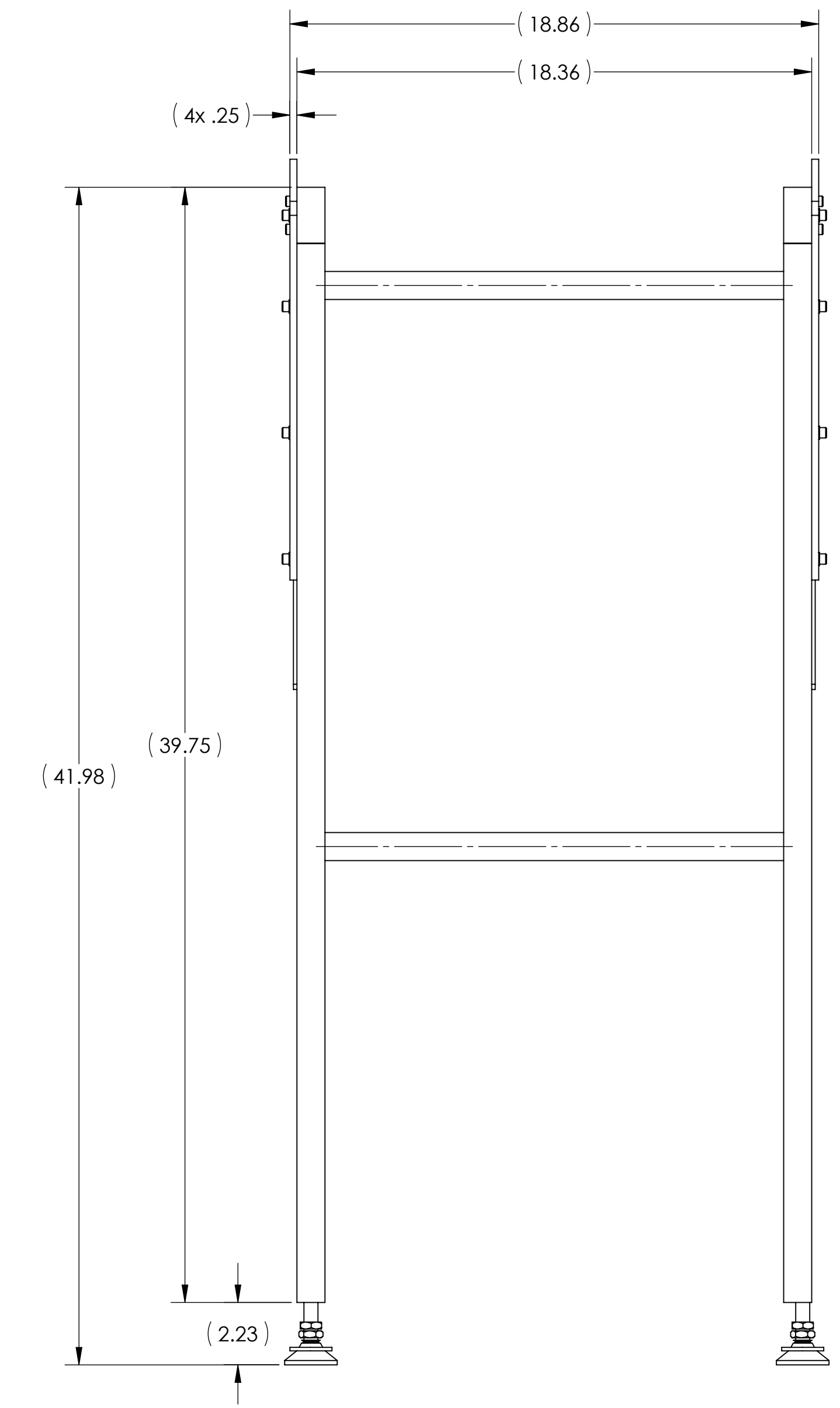
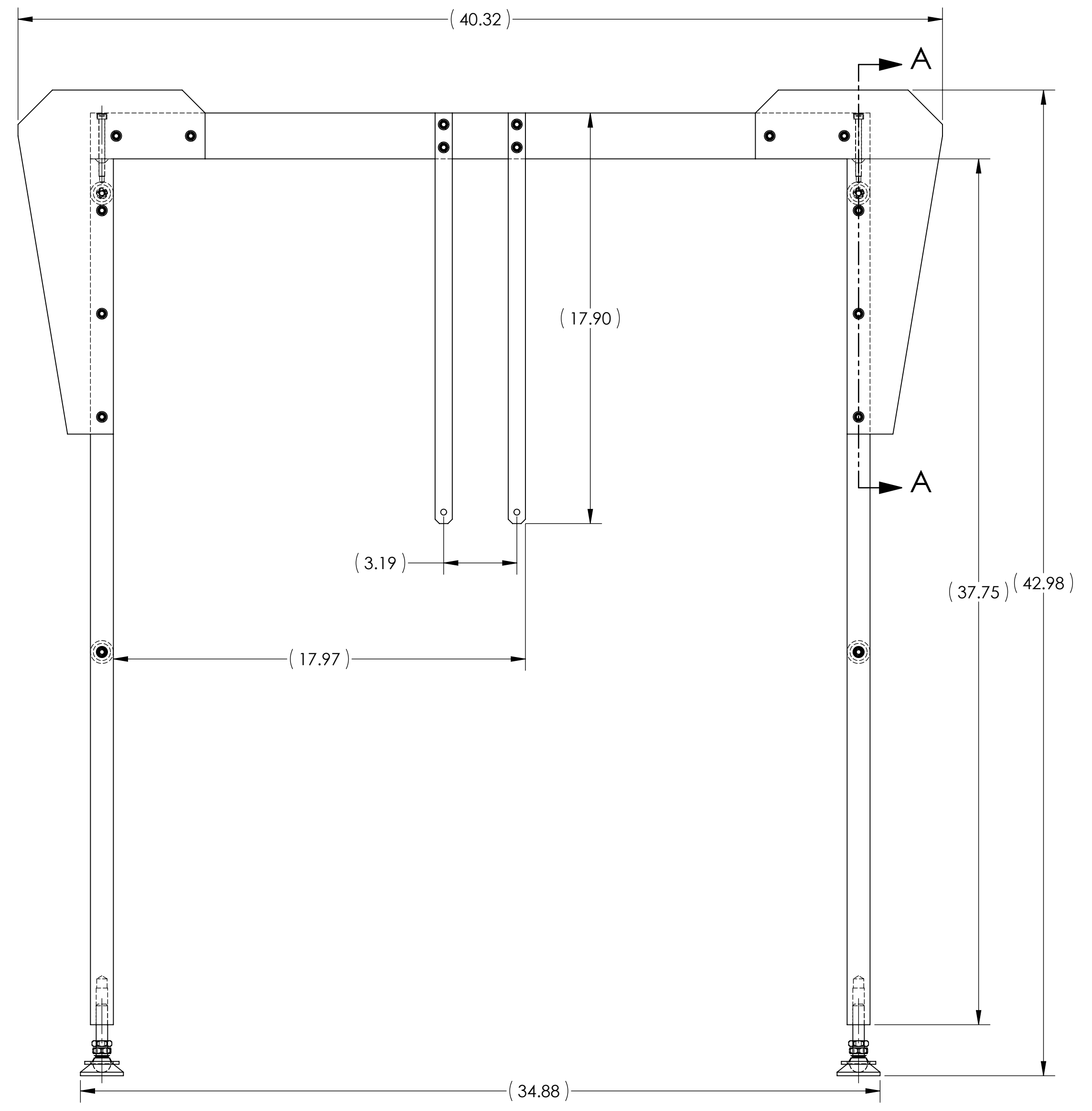
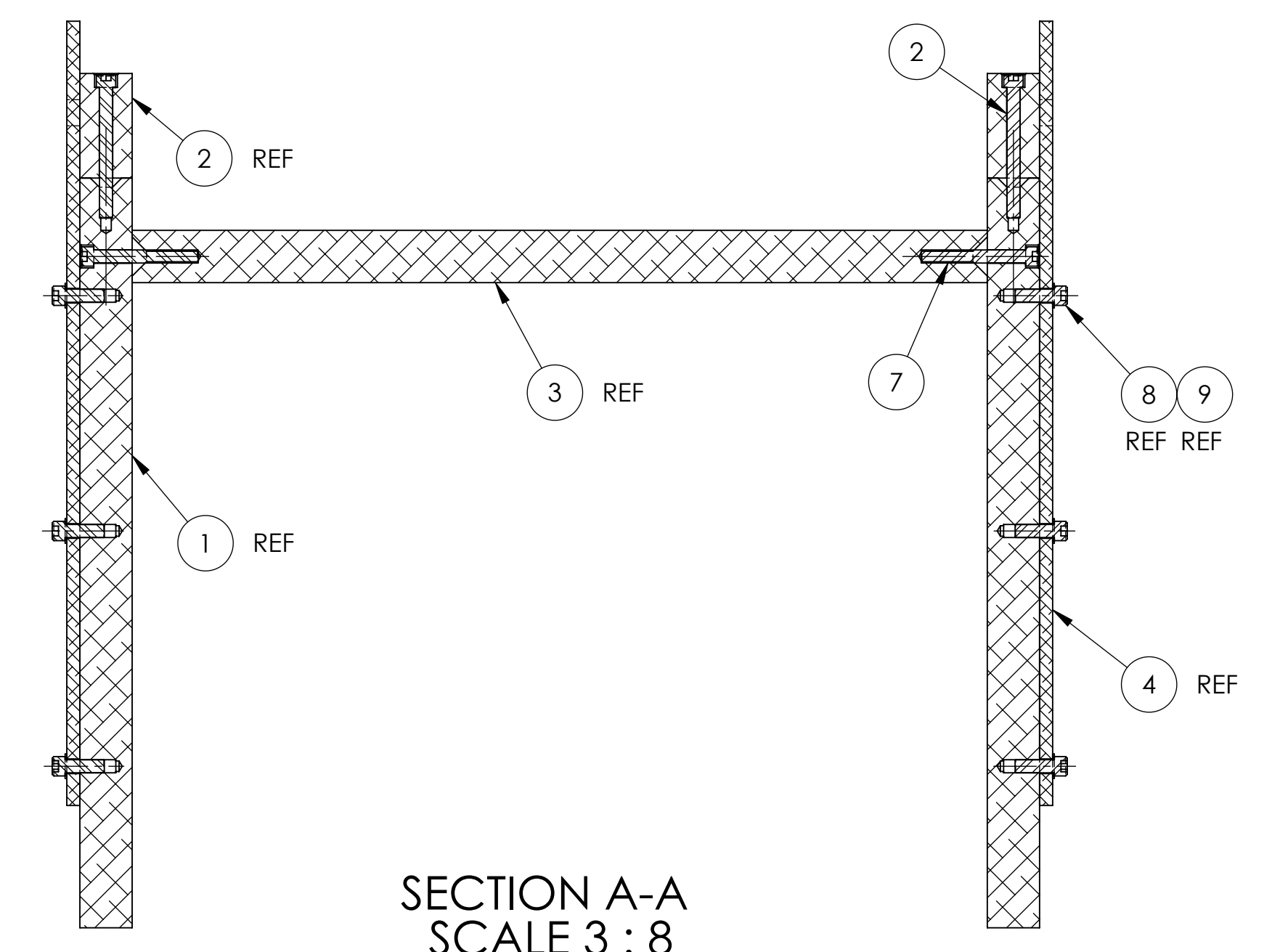
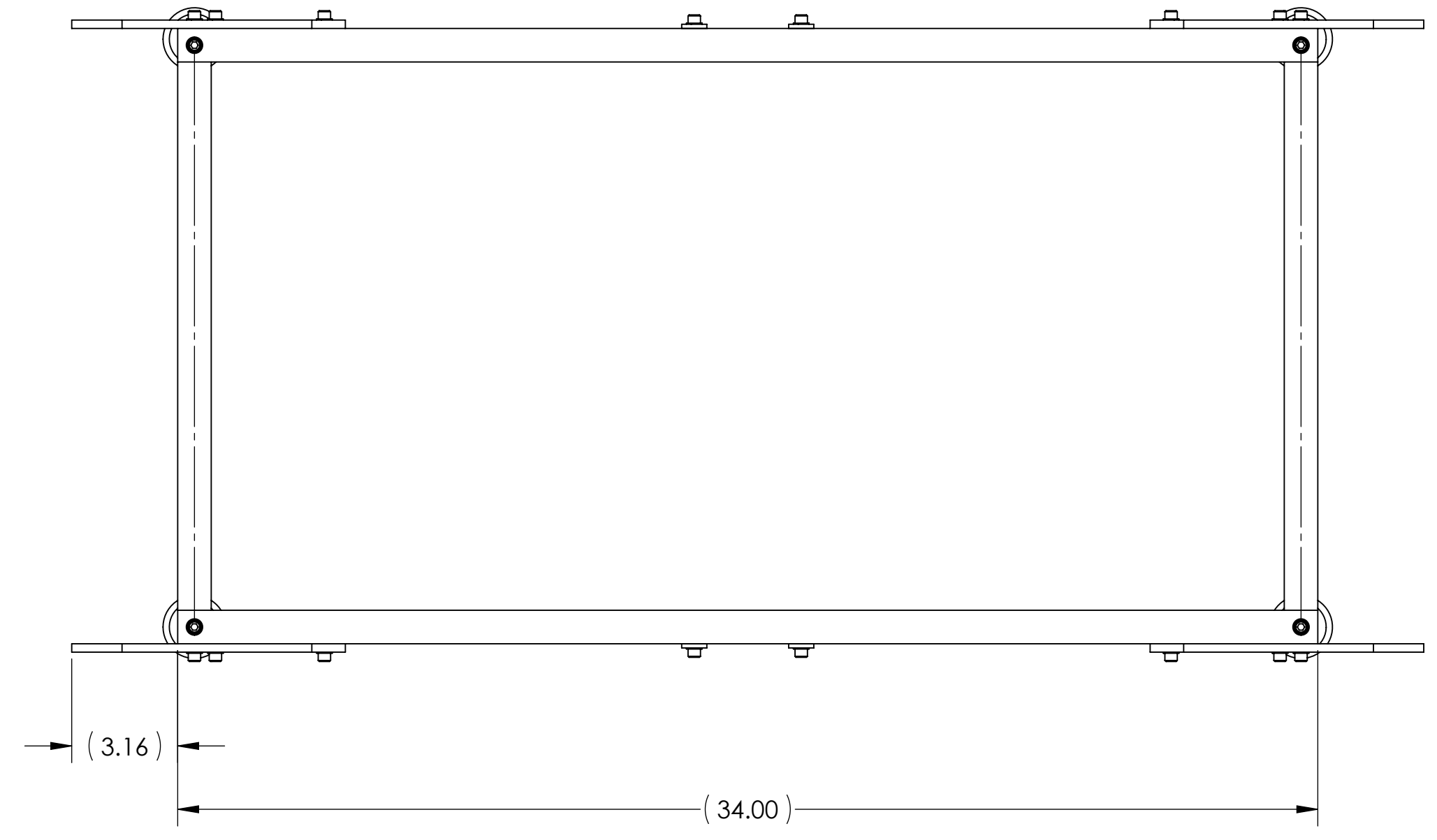
SYSTEM: ADVANCED LIGO SUB-SYSTEM: AOS

PART NAME: gLIGO TMS OPTICAL TABLE SUPPORT BRIDGE ASSY

DESIGNER: J. TERRAZAS	24 MAR 2011	SIZE: D	DWG. NO.: D1100531	REV.: v1
DRAFTER: J. TERRAZAS	29 MAR 2011	APPROVAL:		SHEET 1 OF 3

SCALE: 1:8 PROJECTION: [Symbol]

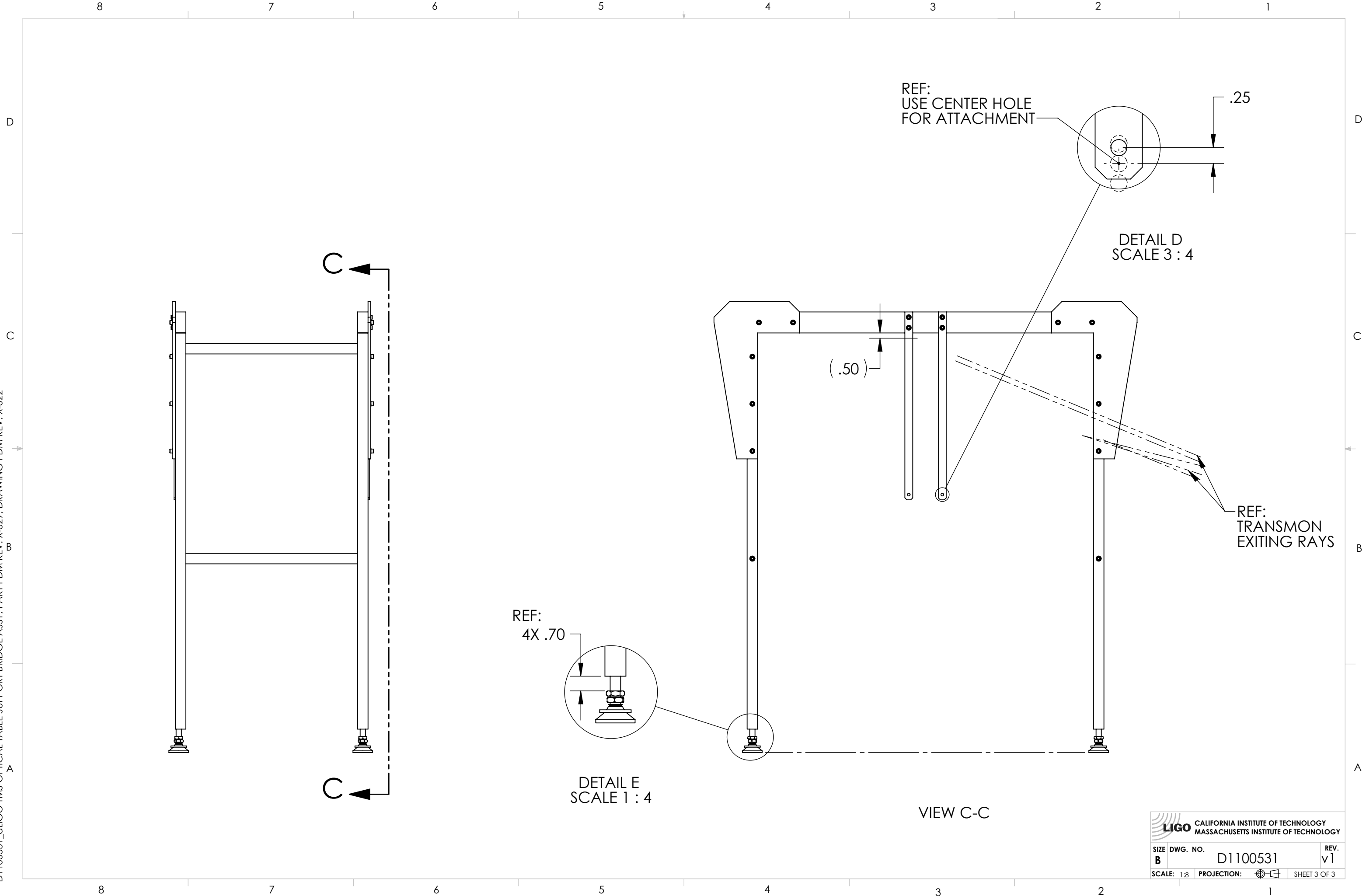
D1100531\_gLIGO TMS OPTICAL TABLE SUPPORT BRIDGE ASSY PART PDM REV: X-029 DRAWING PDM REV: X-022



<b>LIGO</b> CALIFORNIA INSTITUTE OF TECHNOLOGY MASSACHUSETTS INSTITUTE OF TECHNOLOGY		REV.
SIZE DWG. NO.	<b>D1100531</b>	v1
SCALE: 1:8	PROJECTION:	SHEET 2 OF 3

D1100531\_LIGO TMS OPTICAL TABLE SUPPORT BRIDGE ASSY. PART PDM REV. X:029. DRAWING PDM REV. X:022

D1100531\_qLIGO TMS OPTICAL TABLE SUPPORT BRIDGE ASSY, PART PDM REV: X-029, DRAWING PDM REV: X-022



**LIGO** CALIFORNIA INSTITUTE OF TECHNOLOGY  
MASSACHUSETTS INSTITUTE OF TECHNOLOGY

SIZE	DWG. NO.	REV.
B	D1100531	v1
SCALE: 1:8	PROJECTION:	SHEET 3 OF 3