

4

3

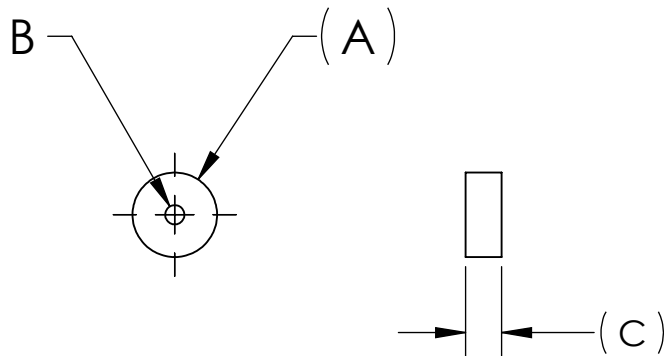
2

1

## NOTES CONTINUED:

⑤ MATERIALS: DISC FLEXIBLE MAGNETS.

REV.	DATE	DCN #	DRAWING TREE #
v1	22 MAR 2011	E1100258	-
-	-	-	-
-	-	-	-



PART NUMBER	DIM A	DIM B	DIM C	Mc MASTER #
D1100500-01	3/4'	.281	3/16	58145K83
D1100500-02	1/2'	.203	3/16	58145K81

## NOTES AND TOLERANCES: (UNLESS OTHERWISE SPECIFIED)

DIMENSIONS ARE IN INCHES

## TOLERANCES:

.XX ± .02  
.XXX ± .010

ANGULAR ± 0.5°

1. INTERPRET DRAWING PER ASME Y14.5-1994.
2. REMOVE ALL SHARP EDGES .005-.015. FOR MACHINED PARTS. ROUND ALL EDGES APPROXIMATELY R.02 FOR SHEET METAL PARTS.
3. DO NOT SCALE FROM DRAWING.
4. ALL MACHINING FLUIDS MUST BE FULLY SYNTHETIC, FULLY WATER SOLUBLE AND FREE OF SULFUR, SILICONE, AND CHLORINE.

## MATERIAL



## FINISH

μinch



CALIFORNIA INSTITUTE OF TECHNOLOGY  
MASSACHUSETTS INSTITUTE OF TECHNOLOGY

## SYSTEM

ADVANCED LIGO

## SUB-SYSTEM

AOS

## NEXT ASSY

## PART NAME

SLC ENAMEL ROUND MASKING MAGNET

## DESIGNER

N. Nguyen 22 Mar 2011

## DRAFTER

N. Nguyen 22 Mar 2011

## CHECKER

M. Smith 25 Mar 2011

## APPROVAL

D. Coyne 30 Mar 2011

## SIZE

A

## DWG. NO.

D1100500

## REV.

v1

SCALE: 4:1

PROJECTION:



SHEET 1 OF 1

4

3

2

1