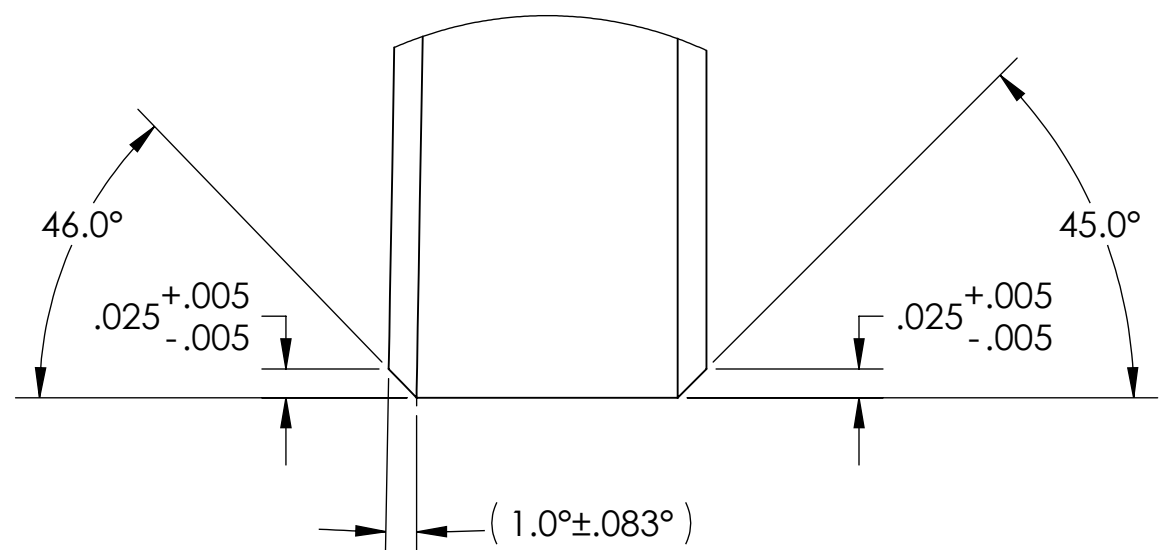
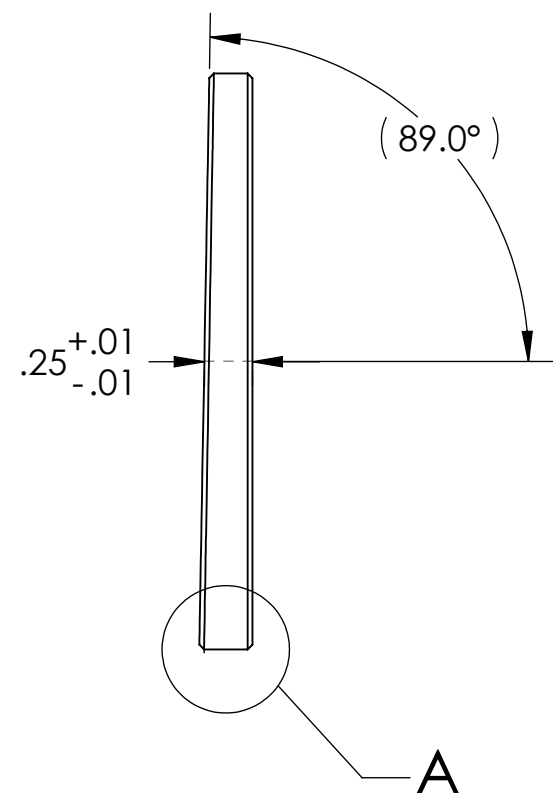
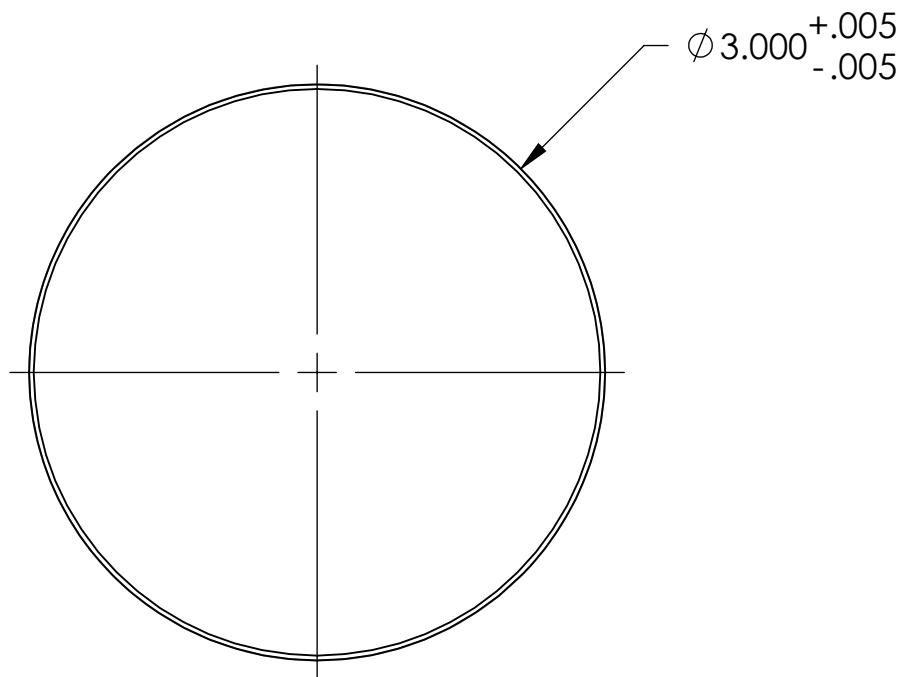
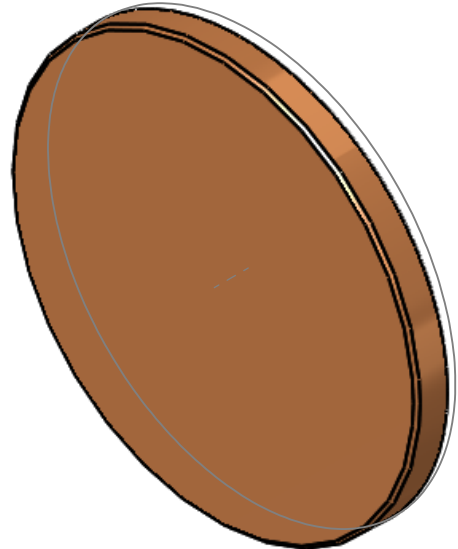
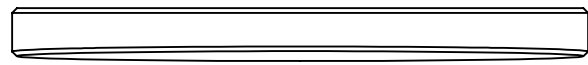


**NOTES CONTINUED:**  
 5 SCRIBE, ENGRAVE, LASER MARK OR MECHANICALLY STAMP (NO DYES OR INKS) A UNIQUE THREE DIGIT SERIAL NUMBER & REVISION NUMBER ON EACH PART. SERIAL NUMBERS START AT 001 FOR THE FIRST ARTICLE AND PROCEED CONSECUTIVELY. BAG AND TAG PARTS WITH THEIR DRAWING PART NUMBER, REVISION, VARIANT OR "TYPE" (IF APPLICABLE), AND QUANTITY. IF PARTS ARE TOO SMALL TO SCRIBE, BAGGING AND TAGGING ALONE IS SUFFICIENT.  
 EXAMPLE (PART): 001-v1  
 EXAMPLE (TAG): DXXXXXX-VY, TYPE-XX, QTY: TBD

REV.	DATE	DCN #	DRAWING TREE #
-	-	-	-
-	-	-	-
-	-	-	-

D 6 ZnSe SPECS:  
 DIA: 3" (+0/-0.005")  
 CT: 0.25" (+0/-0.01")  
 BEVEL: 0.025" (+/-0.005)  
 WEDGE: 60 MIN (+/-5 MIN)  
 SURF FIG: (LAMBDA/10) P-V AT 10.6um  
 SURF QUAL: 40/20 SCRATCH/DIG  
 COATING: AR/AR @ 10.6um



DETAIL A  
 SCALE 6 : 1

D1100485\_VP\_ZNSE WINDOW, .25 THICK, 60 MIN WEDGE, PART PDM REV: X-005, DRAWING PDM REV: X-003

NOTES AND TOLERANCES: (UNLESS OTHERWISE SPECIFIED)	
DIMENSIONS ARE IN INCHES	
TOLERANCES: .XX ± .01 .XXX ± .005 ANGULAR ± 0.5°	
1. INTERPRET DRAWING PER ASME Y14.5-1994. 2. REMOVE ALL SHARP EDGES, .005-.015, FOR MACHINED PARTS. ROUND ALL EDGES APPROXIMATELY R.02 FOR SHEET METAL PARTS. 3. DO NOT SCALE FROM DRAWING. 4. ALL MACHINING FLUIDS MUST BE FULLY SYNTHETIC, FULLY WATER SOLUBLE AND FREE OF SULFUR, SILICONE, AND CHLORINE.	
MATERIAL	SEE NOTE 6
FINISH	6

CALIFORNIA INSTITUTE OF TECHNOLOGY MASSACHUSETTS INSTITUTE OF TECHNOLOGY	PART NAME	
	.25 THICK, 60 MIN WEDGE, ZnSe WINDOW	
	SYSTEM	SUB-SYSTEM
	ADVANCED LIGO	AOS
NEXT ASSY	D1100493	

DESIGNER	A. LANGLEY	21 MAR 2011	SIZE	DWG. NO.	REV.
DRAFTER	A. LANGLEY	21 MAR 2011	B	D1100485	v1
CHECKER	M. JACOBSON	29 MAR 2011	SCALE	1:1	PROJECTION:
APPROVAL	P. WILLEMS	30 MAR 2011	SHEET 1 OF 1		