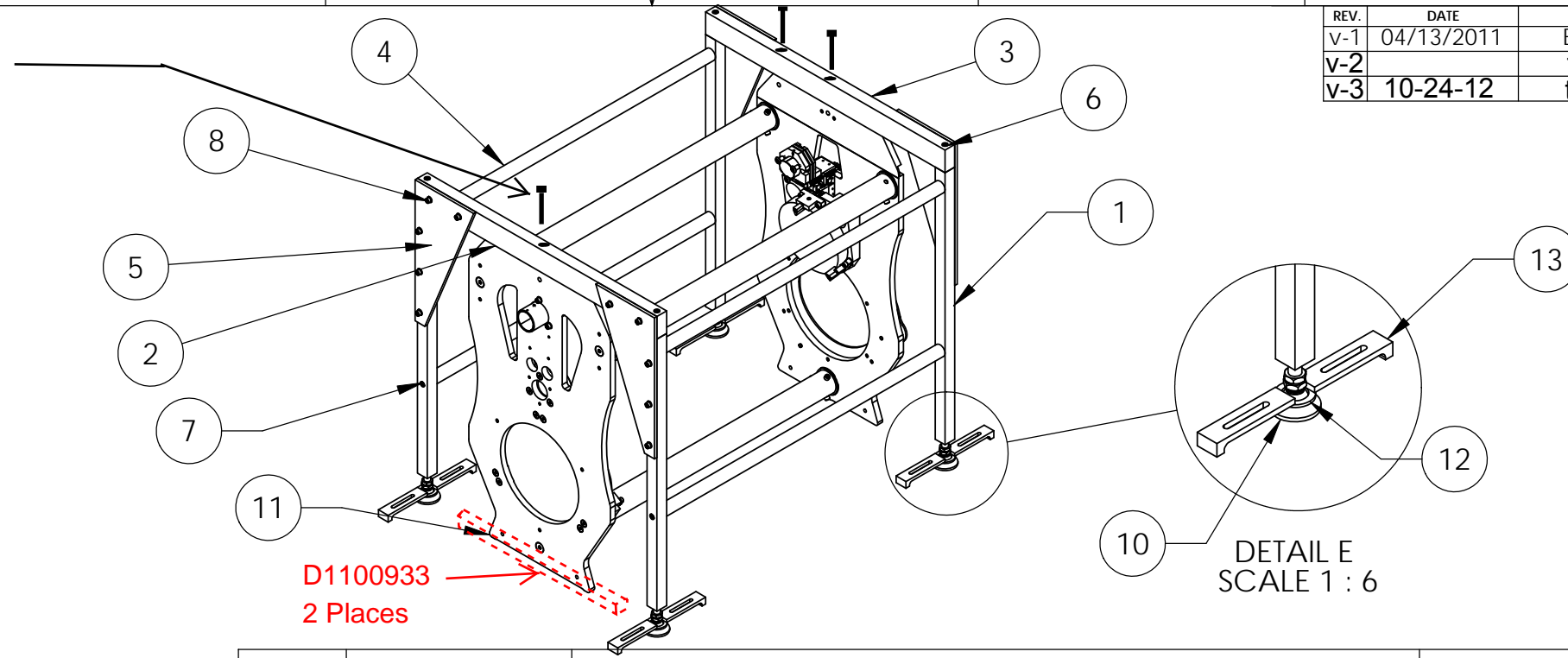


D1100460\_aLIGO TMS TELE ALIGNMENT SUPPORT BRIDGE ASSY, PART PDM REV: X-025, DRAWING PDM REV: X-023

REV.	DATE	DCN #	DRAWING TREE #
v-1	04/13/2011	E1100352	
v-2		to follow	
v-3	10-24-12	to follow	

McMaster parts  
 SHCS 5/16-18 x 2.5" long  
 # 92196A593 w/ washer  
 # 96861A700  
 REF.  
 ( See Page 3 view) 3 Places  
 washer between telescope  
 and bridge and under scr  
 head



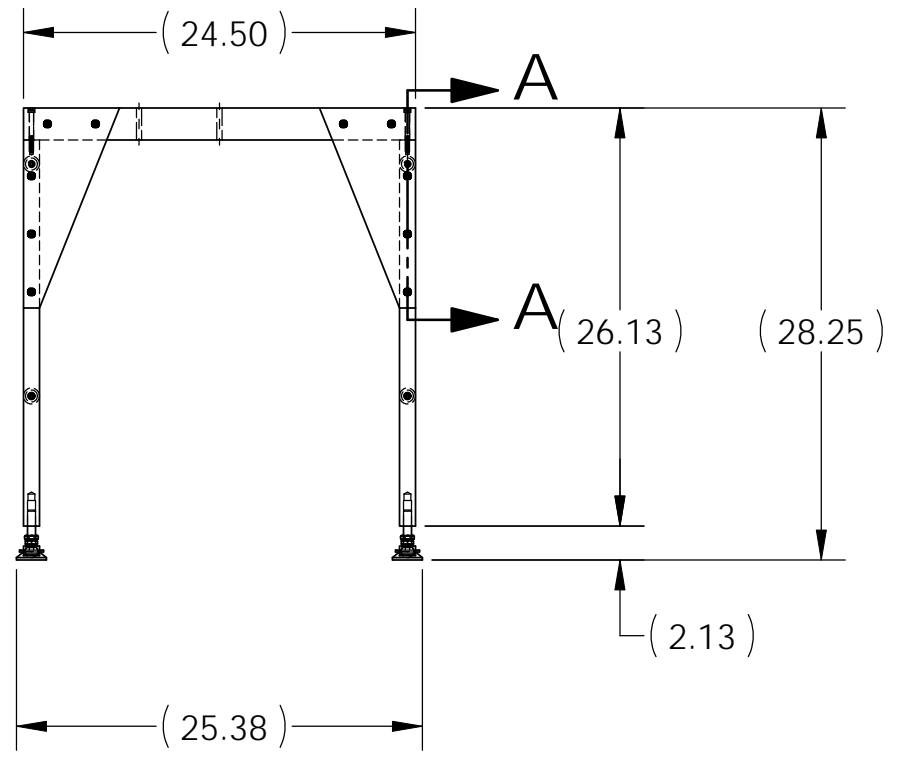
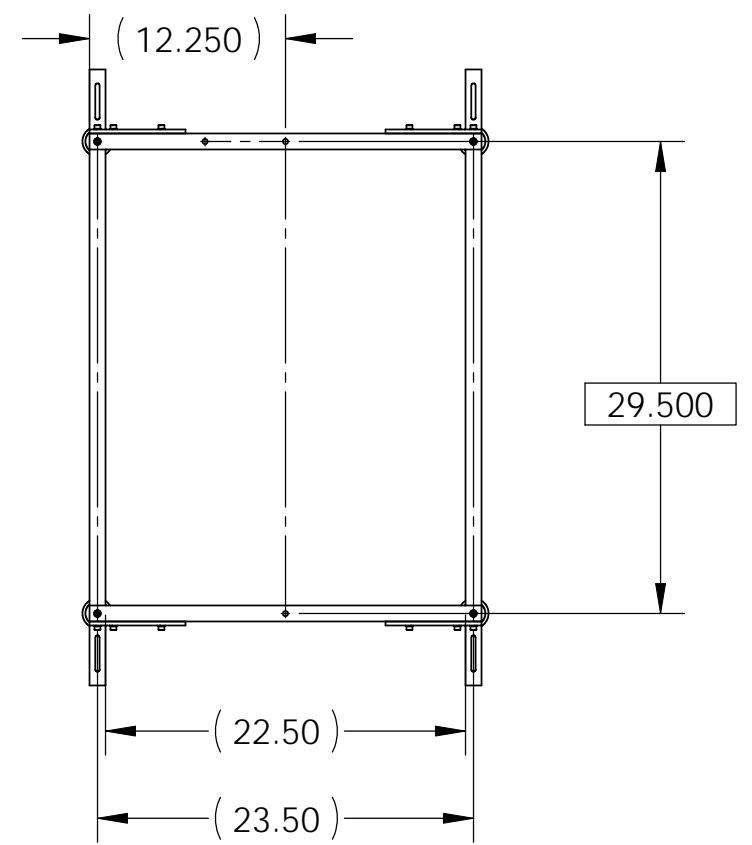
**THIS BRIDGE SUPPORTS THE TMS  
 TELESCOPE FOR THE TELESCOPE  
 ALIGNMENT TASK**

13		LOS DOG CLAMP	AISI 1020	8		8
12	98126A849	(McM-Carr), WASHER, 1" ID X 1.5 OD x .12 T	18-8 SSTL	4		4
11	REF	ALIGO TMS TELESCOPE	N/A	1		1
10	6111K55	McMASTER, SWIVEL LEVELING MOUNT, .50-13 X 3.125 LG, 1.875 DIA BASE, 2.00 STUD	NICKEL PLATED STEEL	4		4
9	96861A600	(McMASTER-CARR).25 VENTED WASHER,) .255 ID X .468 OD X .031 THK	18-8 SSTL	20		20
8	92196A540	(McMASTER-CARR) .25-20-.75 L. S.H.C.S.	18-8 SSTL	20		20
7	92195A546	(McM-Carr) 1/4 - 20x 1.5" lg SHCS	18-8 SSTL	8		8
6	92196A552	(McM-Carr) .25-20-2.25L. S.H.C.S.	18-8 SSTL	4		4
5	D1100465	aLIGO TMS TELE ALIGNMENT SUPPORT BRIDGE GUSSET	6061-T6 Al	4		4
4	D1100464	aLIGO TMS TELE ALIGNMENT SUPPORT BRIDGE SIDE BRACE	6061-T6 Al	4		4
3	D1100552	aLIGO TMS TELE ALIGNMENT SUPPORT BRIDGE TOP BAR, ENTRY	6061-T6 Al	1		1
2	D1100463	aLIGO TMS TELE ALIGNMENT SUPPORT BRIDGE TOP BAR, PRIMARY	6061-T6 Al	1		1
1	D1100462	aLIGO TMS TELE ALIGNMENT SUPPORT BRIDGE LEGS	6061-T6 Al	4		4
ITEM NO.	PART NUMBER	DESCRIPTION	MATERIAL	REQ	SPARE	TOTAL

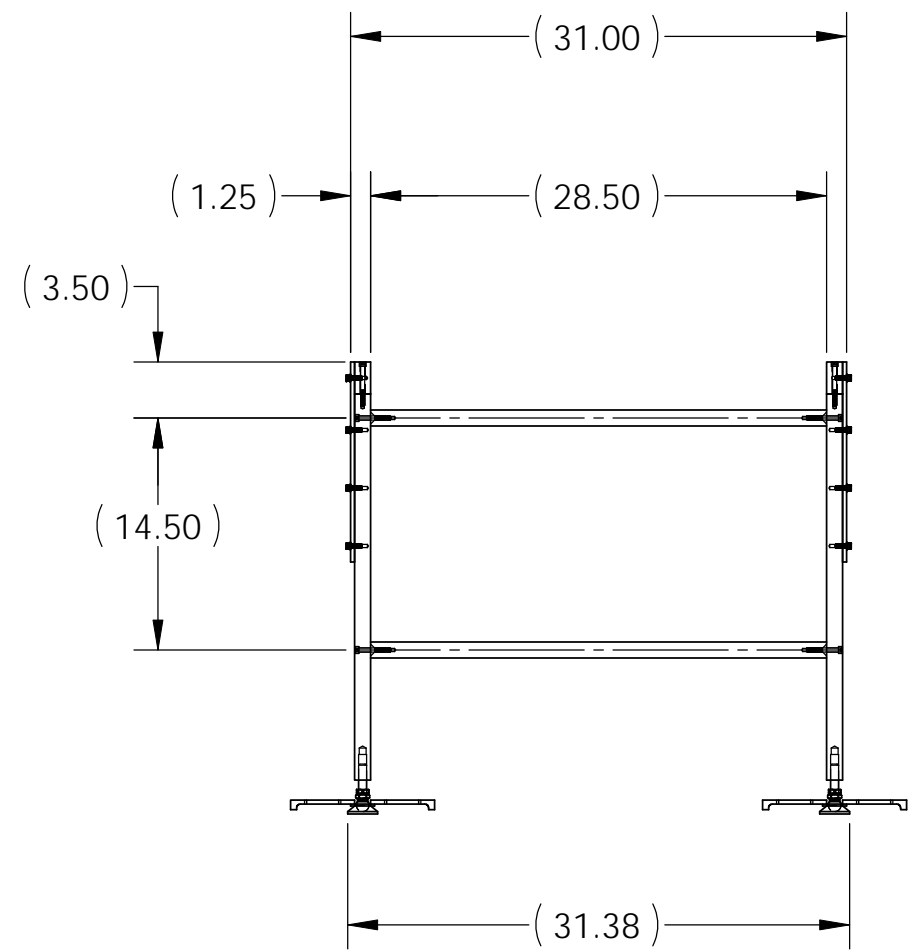
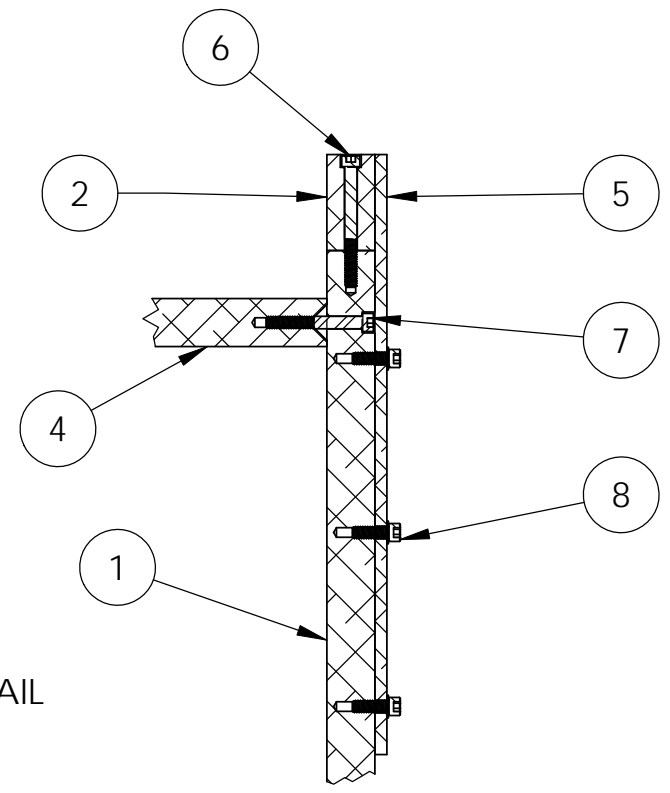
**PARTS LIST**


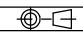
DIMENSIONS ARE IN INCHES		TOLERANCES: .XX ± .02 .XXX ± .005		ANGULAR ± 1.0°		NOTES AND TOLERANCES: (UNLESS OTHERWISE SPECIFIED) 1. INTERPRET DRAWING PER ASME Y14.5-1994. 2. REMOVE ALL SHARP EDGES, R.02 MIN. 3. DO NOT SCALE FROM DRAWING. 4. ALL MACHINING FLUIDS MUST BE FULLY SYNTHETIC, FULLY WATER SOLUBLE AND FREE OF SULFUR, SILICONE, AND CHLORINE.		MATERIAL N/A		FINISH N/A μinch		LIGO CALIFORNIA INSTITUTE OF TECHNOLOGY MASSACHUSETTS INSTITUTE OF TECHNOLOGY		PART NAME aLIGO TMS TELE ALIGNMENT SUPPORT BRIDGE ASSY		DESIGNER J. TERRAZAS 16 FEB 2011		DRAFTER J. TERRAZAS 5/19 2011		CHECKER		APPROVAL		SCALE: 1:12 PROJECTION:		SHEET 1 OF 3	
												SYSTEM ADVANCED LIGO		SUB-SYSTEM AOS		NEXT ASSY		REV. v-3		SIZE DWG. NO. B D1100460							

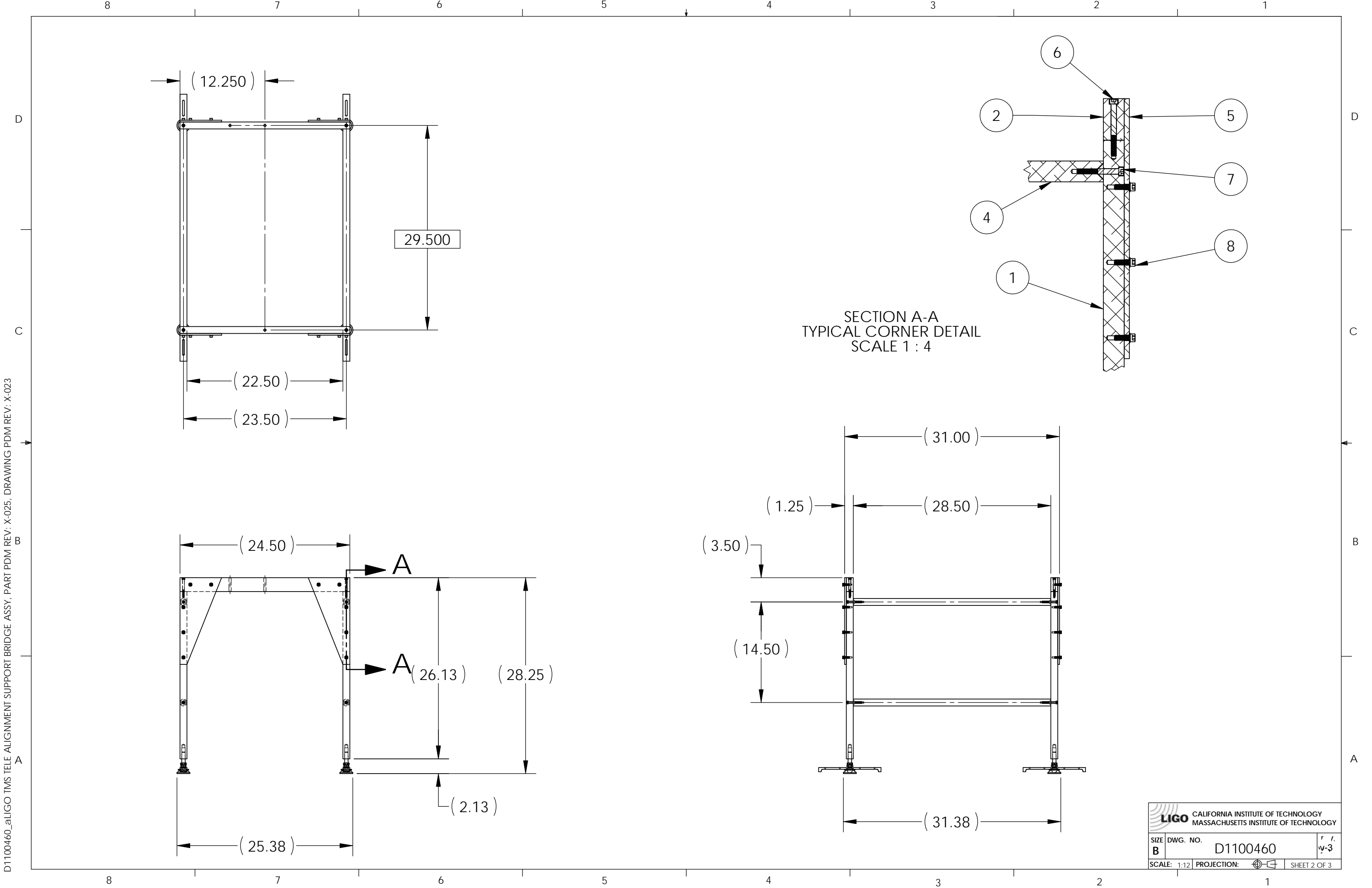
D1100460\_aLIGO TMS TELE ALIGNMENT SUPPORT BRIDGE ASSY, PART PDM REV: X-025, DRAWING PDM REV: X-023



SECTION A-A  
TYPICAL CORNER DETAIL  
SCALE 1 : 4



 CALIFORNIA INSTITUTE OF TECHNOLOGY MASSACHUSETTS INSTITUTE OF TECHNOLOGY	
SIZE <b>B</b>	DWG. NO. D1100460
SCALE: 1:12	PROJECTION:  SHEET 2 OF 3



D1100460\_aLIGO TMS TELE ALIGNMENT SUPPORT BRIDGE ASSY, PART PDM REV: X-025, DRAWING PDM REV: X-023

8 7 6 5 4 3 2 1

D  
C  
B  
A

D  
C  
B  
A

Insert 5/16" vented washers at the 3 mounting screw interfaces  
McMaster part 96861A700

DETAIL D  
SCALE 1 : 4



Setup Table Ref.

4X .60  
approx at start

Adjust feet ( 4) until telescope clears table approx 1/8" inch

Remove the telescope stabilizer bars

DETAIL C  
SCALE 1 : 4

 CALIFORNIA INSTITUTE OF TECHNOLOGY MASSACHUSETTS INSTITUTE OF TECHNOLOGY		
SIZE <b>B</b>	DWG. NO. D1100460	REV. V-3
SCALE: 1:12	PROJECTION: 	SHEET 3 OF 3

8 7 6 5 4 3 2 1