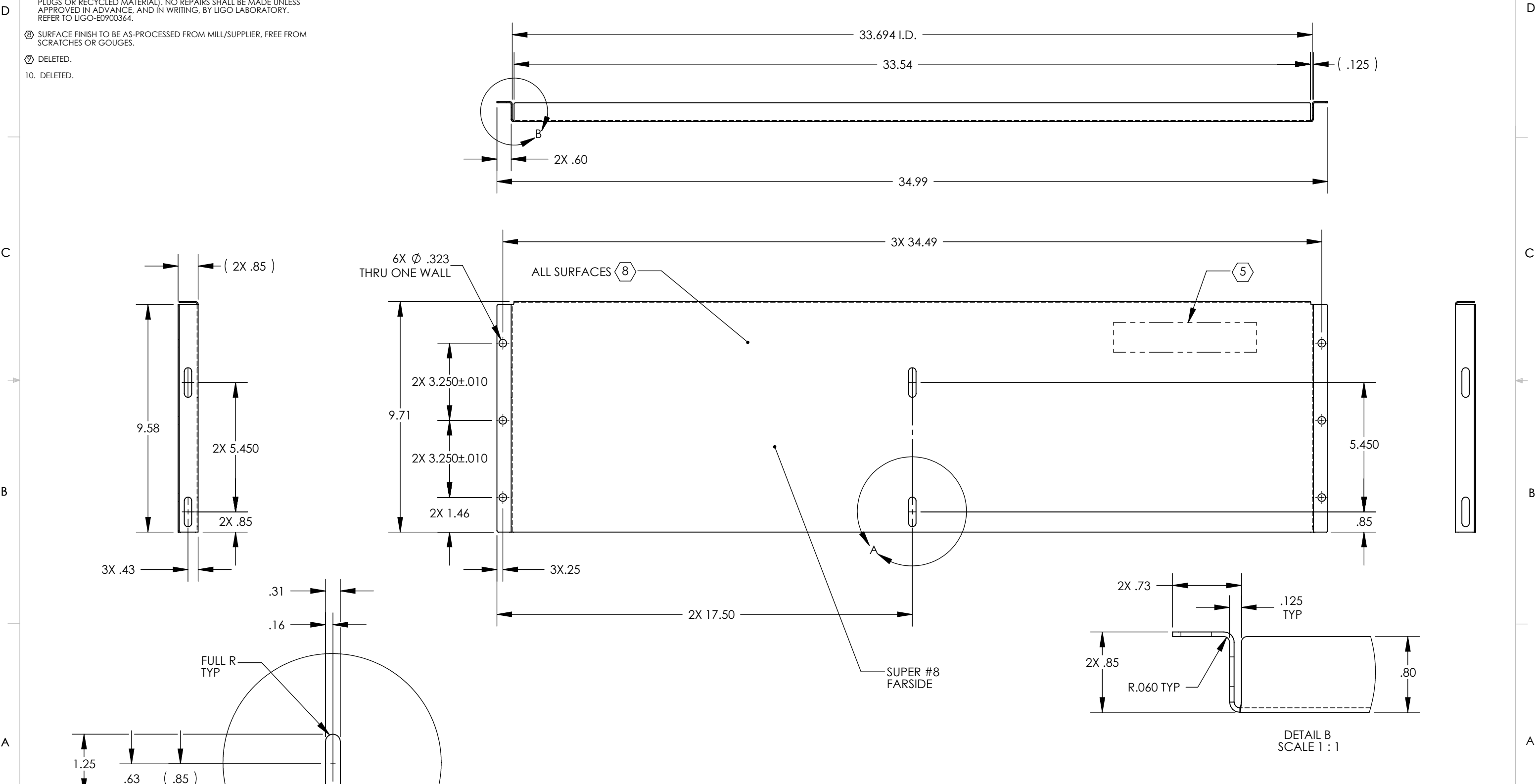


D1100458_AdlIGO_AOS_SLC_ACB Bottom Extender, PART PDM REV: X-008, DRAWING PDM REV: X-017

- NOTES CONTINUED:**
- 5. MECHANICALLY STAMP (NO INKS OR DYES) PART NUMBER, REVISION AND SERIAL NUMBER .20 DEEP WITH MINIMUM CHARACTER HEIGHT .156 APPROXIMATELY WHERE SHOWN. SERIAL NUMBER WILL START AT 001 AND PROCEED CONSECUTIVELY. EXAMPLE: D100XXXX-V1 S/N 001
 - 6. ALL PARTS SHALL BE MANUFACTURED IN ACCORDANCE WITH LIGO SPECIFICATION E0900364.
 - 7. ALL MATERIAL IS TO BE VIRGIN MATERIAL (i.e. NO WELD REPAIRS, PLUGS OR RECYCLED MATERIAL). NO REPAIRS SHALL BE MADE UNLESS APPROVED IN ADVANCE, AND IN WRITING, BY LIGO LABORATORY. REFER TO LIGO-E0900364.
 - 8. SURFACE FINISH TO BE AS-PROCESSED FROM MILL/SUPPLIER, FREE FROM SCRATCHES OR GOUGES.
 - 9. DELETED.
 - 10. DELETED.

REV.	DATE	DCN #	DRAWING TREE #
v1	13 MAR 2011	-	-
v2	25 MAR 2011	E1100216	-
v3	25 JUN 2011	E1000335	-
v4	7 SEP 2011	E1000335	-



NOTES AND TOLERANCES: (UNLESS OTHERWISE SPECIFIED)

DIMENSIONS ARE IN INCHES

TOLERANCES:
 .XX ± .03
 .XXX ± .015
 ANGULAR ± 1.0°

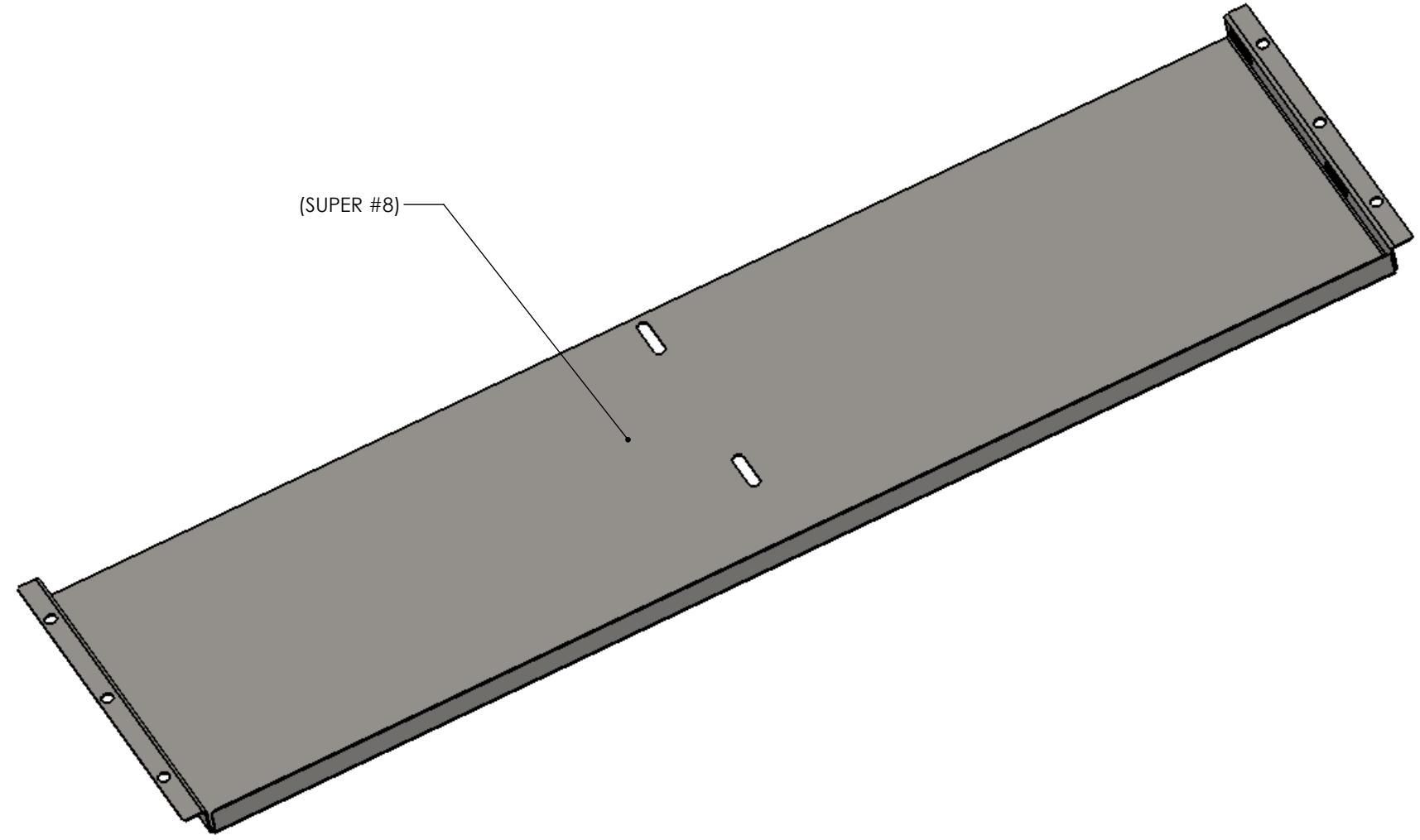
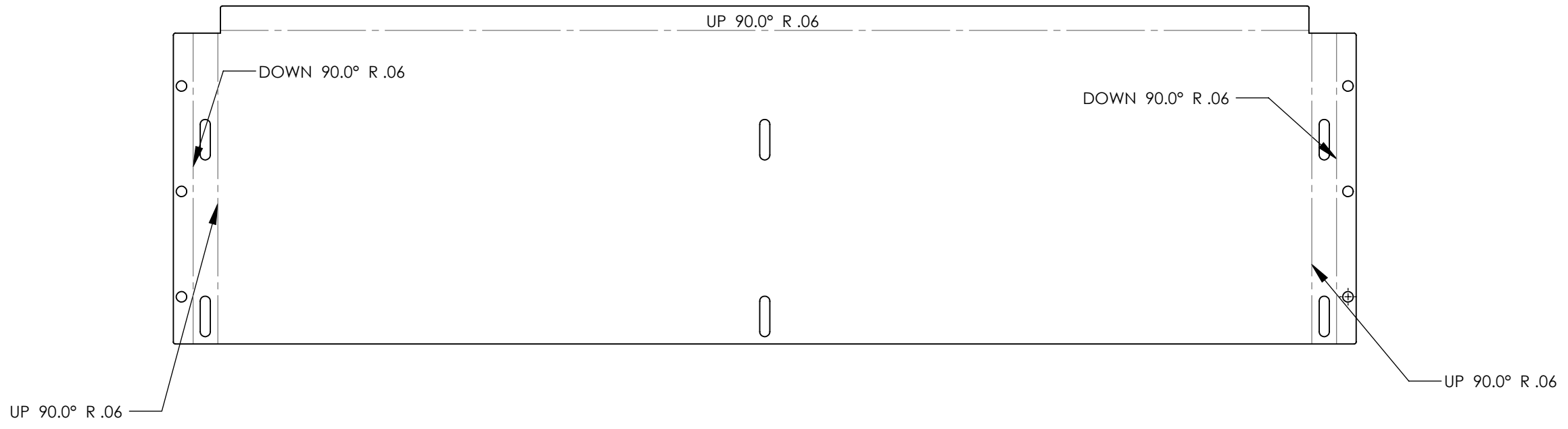
1. INTERPRET DRAWING PER ASME Y14.5-1994.
 2. REMOVE ALL SHARP EDGES, .005-.015 ON ALL EDGES AND HOLES.
 3. DO NOT SCALE FROM DRAWING.
 4. ALL MACHINING FLUIDS MUST BE FULLY SYNTHETIC, FULLY WATER SOLUBLE AND FREE OF SULFUR, SILICONE, AND CHLORINE.

LIGO CALIFORNIA INSTITUTE OF TECHNOLOGY MASSACHUSETTS INSTITUTE OF TECHNOLOGY		PART NAME SLC ACB BOTTOM EXTENDER	
SYSTEM ADVANCED LIGO	SUB-SYSTEM AOS	DESIGNER N.Nguyen 17 Feb 2011	SIZE DWG. NO. B D1100458
MATERIAL 18 GAUGE 304 SSSL	FINISH (8) SUPER #8	DRAFTER N.KILPATRICK 13 MAR 2011	REV. v4
NEXT ASSY D1100359	CHECKER APPROVAL	SCALE: 1:4	PROJECTION: SHEET 1 OF 2

D1100458_AcLIGO_AOS_SLC_ACB Bottom Extender, PART PDM REV: X-008, DRAWING PDM REV: X-017

8 7 6 5 4 3 2 1

D
C
B
A



8 7 6 5 4 3 2 1

LIGO CALIFORNIA INSTITUTE OF TECHNOLOGY
MASSACHUSETTS INSTITUTE OF TECHNOLOGY

SIZE	DWG. NO.	REV.
B	D1100458	v4
SCALE: 1:4		PROJECTION:
		SHEET 2 OF 2