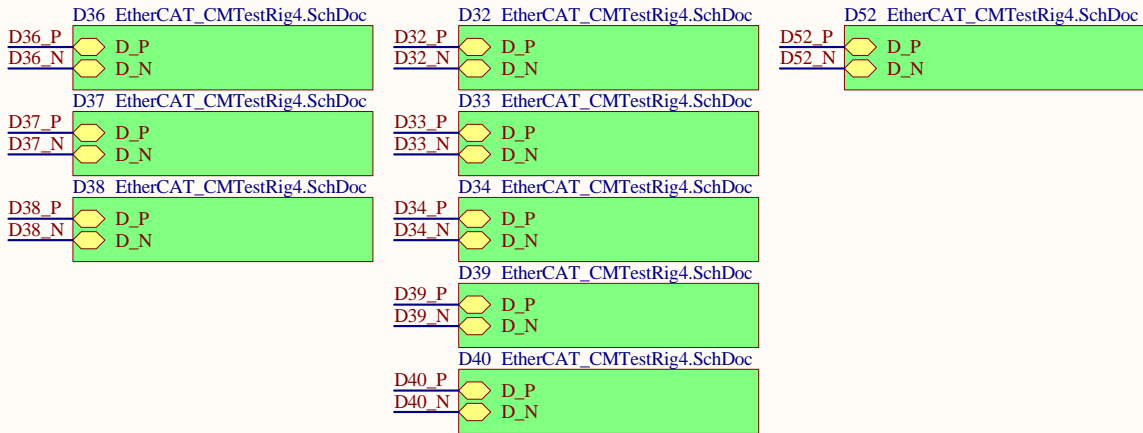
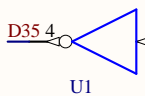
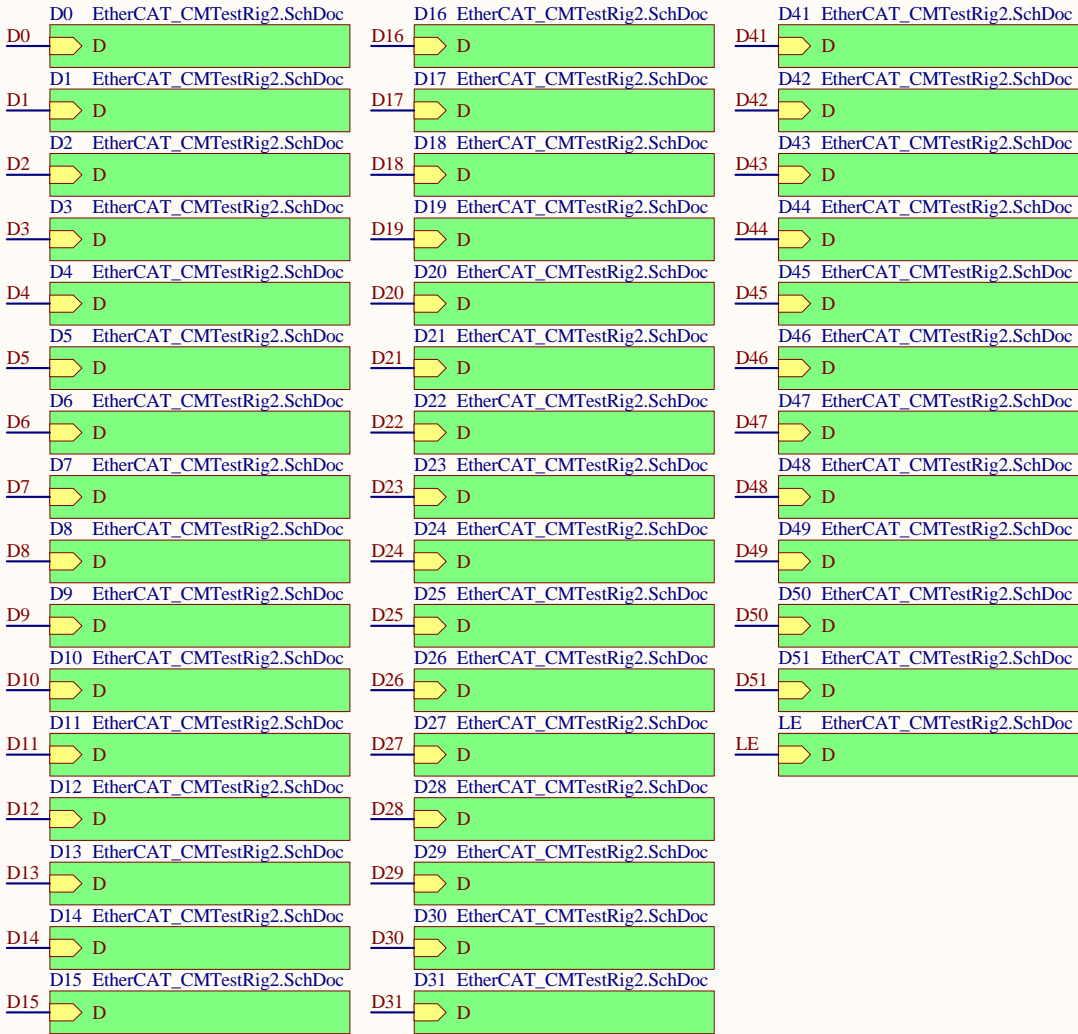


H1	Handle, 3"	E1	BNC lock washer	E10	BNC nut	PN2	Front Panel
H2	Handle, 3"	E2	BNC lock washer	E11	BNC nut	LIGO	D1003365-v1
		E3	BNC lock washer	E12	BNC nut	PN3	Rear Panel
Mouser 534-9109		E4	BNC lock washer	E13	BNC nut	LIGO	D1003366-v1
H3	Ferrule	E5	BNC lock washer	E14	BNC nut		
H4	Ferrule	E6	BNC lock washer	E15	BNC nut	PN4	DB37 cable
H5	Ferrule	E7	BNC lock washer	E16	BNC nut	Newark 05M6813	
H6	Ferrule	E8	BNC lock washer	E17	BNC nut	PN5	IDC header
Mouser 534-9121		E9	BNC lock washer	E18	BNC nut	PN6	IDC header
M1	#6-32 3/8" flat						
M2	#6-32 3/8" flat	Newark 78M7215		Newark 78M7214		PN7	Jack screw
M3	#6-32 3/8" flat	PN9	Banana jack	PN10	Banana jack		
M4	#6-32 3/8" flat	Newark 39F1574		Newark 39F1575		PN8	Jack screw
McMaster-Carr 91099A215						Newark 80K5431	
H7	Standoff M-F	H17	Standoff F-F	M5	M4-8mm, flat	M11	M4-8mm, flat
H8	Standoff M-F	H18	Standoff F-F	M6	M4-8mm, flat	M12	M4-8mm, flat
H9	Standoff M-F	H19	Standoff F-F	M7	M4-8mm, flat	M13	M4-8mm, flat
H10	Standoff M-F	H20	Standoff F-F	M8	M4-8mm, flat	M14	M4-8mm, flat
H11	Standoff M-F	H21	Standoff F-F	M9	M4-8mm, flat	M15	M4-8mm, flat
H12	Standoff M-F	H22	Standoff F-F	M10	M4-8mm, flat	M16	M4-8mm, flat
H13	Standoff M-F						
H14	Standoff M-F	Newark 56K3039				McMaster-Carr 91420A218	
H15	Standoff M-F						
H16	Standoff M-F						
Newark 56K3066							



Digital Inputs:

D[5.. 0]: Gain slider input 1

D[11.. 6]: Gain slider input 2

D[12] : Input 1 enable

D[13] : Input 2 enable

D[14] : Output 1 switch

D[16..15]: Number of boost stages

D[17] : Common path compensation enable

D[18] : Common path excitation enable

D[19] : Common path option enable

D[20] : Polarity slow path

D[21] : Common filter enable

D[22] : Fast path enable

D[23] : Fast path polarity

D[24] : Slow path option enable

D[25] : Slow path bypass enable

D[26] : Slow output offset +5V fixed

D[27] : Slow output offset enable

D[28] : Slow path compensation enable

D[29] : Slow path boost enable

D[30] : Slow path filter enable

D[31] : Fast path limiter enable

D[46..41]: Gain slider fast path

D[47] : Split path excitation enable

D[48] : Fast path option enable

D[49] : Excitation into slow path

D[50] : Polarity input 1

D[51] : Polarity input 2

LE : Latch enable

Digital Outputs:

D[35] : Fast path limits reached

OK : Voltages are within range

Analog Inputs:

D[36] : Common path offset adjust

D[37] : Slow path offset adjust

D[38] : Slow path output offset

Analog Outputs:

D[32] : Input monitor

D[33] : Monitor at split

D[34] : Fast monitor

D[39] : Slow path feedback monitor

D[40] : Slow monitor

Spares:

D[52] : Not used

Title		
EtherCAT - Common Mode Server Tester		
Size	Number	Revision
B	D1100436	1
Date:	3/23/2011	Sheet 1 of 4
File:	C:\Users\...\EtherCAT_CMTestRig1.SchDpd	Drawn By: Daniel Sigg

A

B

C

D

1

2

3

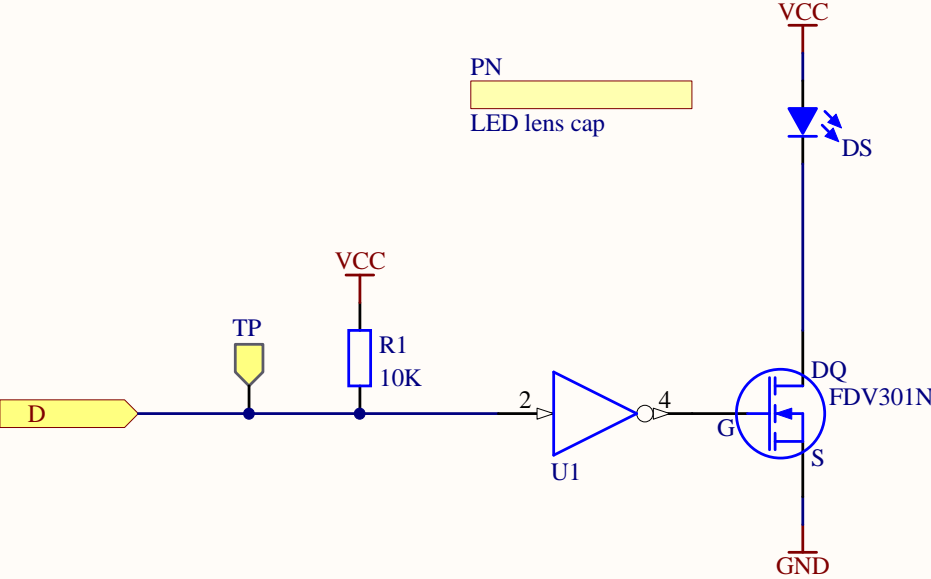
4

A

B

C

D



Title			EtherCAT - Common Mode Server Tester	
Size	Number		Revision	
A	D1100436		1	
Date:	3/23/2011		Sheet 2 of	4
File:	C:\Users\...\EtherCAT_CMTestRig2.SchDoc		Drawn By:	Daniel Sigg

1

2

3

4

A

B

C

D

1

2

3

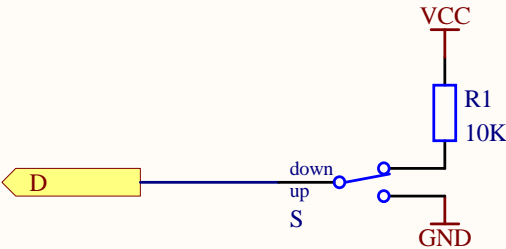
4

A

B

C

D



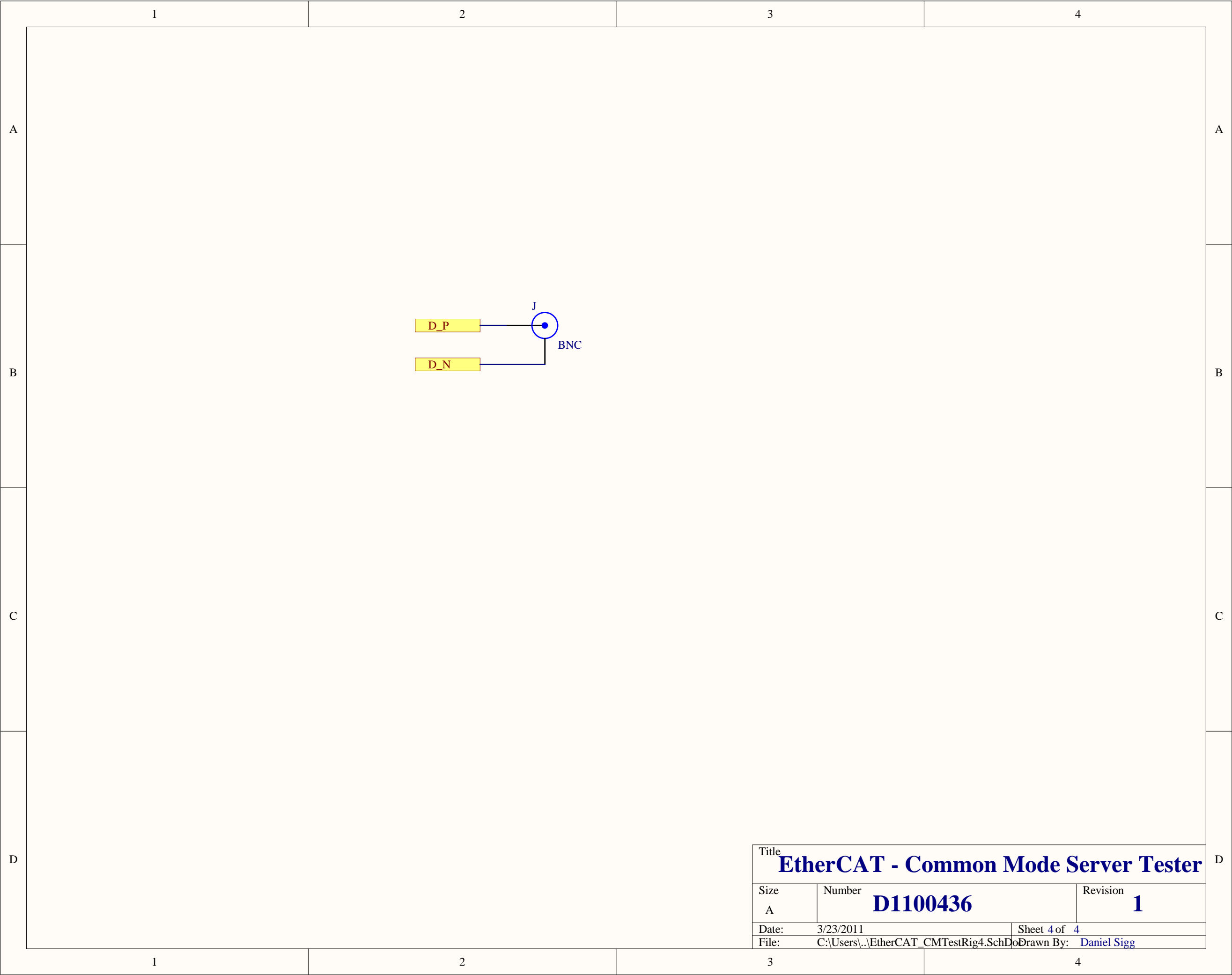
Title			
EtherCAT - Common Mode Server Tester			
Size	Number		Revision
A	D1100436		1
Date:	3/23/2011	Sheet 2 of 4	
File:	C:\Users\...\EtherCAT_CMTestRig3.SchDoc	Drawn By:	Daniel Sigg

1

2

3

4



Title			EtherCAT - Common Mode Server Tester		
Size		Number		Revision	
A		D1100436		1	
Date:		3/23/2011		Sheet 4 of 4	
File:		C:\Users\...\EtherCAT_CMTestRig4.SchDoc		Drawn By: Daniel Sigg	