

8

7

6

5

4

3

2

1

NOTES CONTINUED:

5 MECHANICALLY STAMP (NO INKS OR DYES) PART NUMBER, REVISION AND SERIAL NUMBER .20 DEEP WITH MINIMUM CHARACTER HEIGHT .156 APPROXIMATELY WHERE SHOWN. SERIAL NUMBER WILL START AT 001 AND PROCEED CONSECUTIVELY. EXAMPLE: D100XXX-V1 S/N 001

6. ALL PARTS SHALL BE MANUFACTURED IN ACCORDANCE WITH LIGO SPECIFICATION E0900364.

7. ALL MATERIAL IS TO BE VIRGIN MATERIAL (i.e. NO WELD REPAIRS, PLUGS OR RECYCLED MATERIAL). NO REPAIRS SHALL BE MADE UNLESS APPROVED IN ADVANCE, AND IN WRITING, BY LIGO LABORATORY. REFER TO LIGO-E0900364.

8. SURFACE FINISH TO BE AS-PROCESSED FROM MILL/SUPPLIER, FREE FROM SCRATCHES OR GOUGES.

9. DELETED.

10. DELETED.

11. DELETED.

REV.	DATE	DCN #	DRAWING TREE #
v1	08 MAR 2011	-	-
v2	08 APR 2011	E1100216	-
v3	25 JUN 2011	E1100335	-
v4	7 SEP 2011	E1100335	-

D

C

B

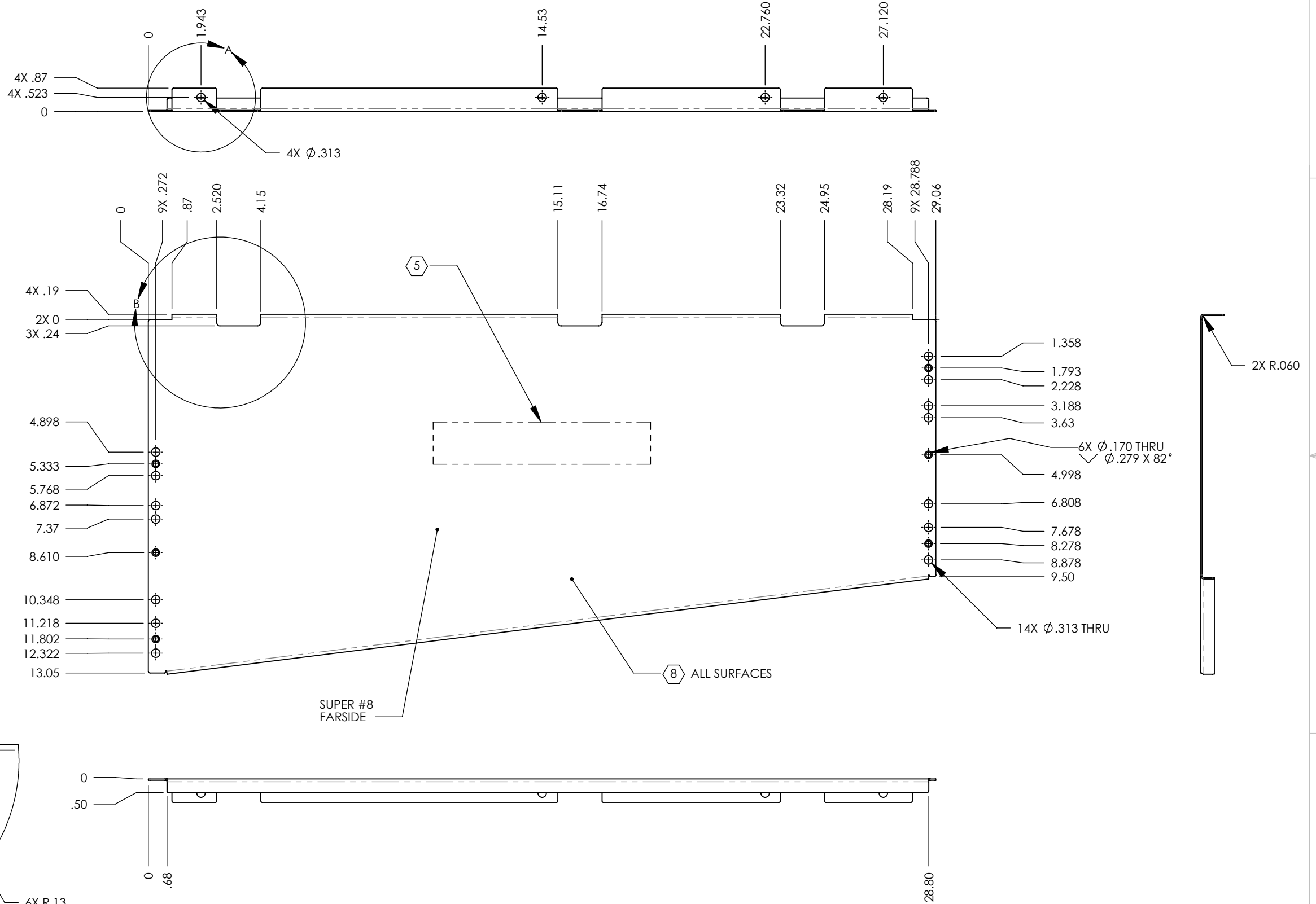
A

D

C

B

A



D1100340_AdlIGO_AOS_SLC_ACB Right Side Panel, PART PDM REV: X-101, DRAWING PDM REV: X-024

NOTES AND TOLERANCES: (UNLESS OTHERWISE SPECIFIED)

DIMENSIONS ARE IN INCHES

TOLERANCES:
.XX ± .03
.XXX ± .015

ANGULAR ± 1.0°

1. INTERPRET DRAWING PER ASME Y14.5-1994.
2. REMOVE ALL SHARP EDGES, .005-.015 ON ALL EDGES AND HOLES.
3. DO NOT SCALE FROM DRAWING.
4. ALL MACHINING FLUIDS MUST BE FULLY SYNTHETIC, FULLY WATER SOLUBLE AND FREE OF SULFUR, SILICONE, AND CHLORINE.

MATERIAL 18 GAUGE 304 SSSL FINISH 8 SUPER #8

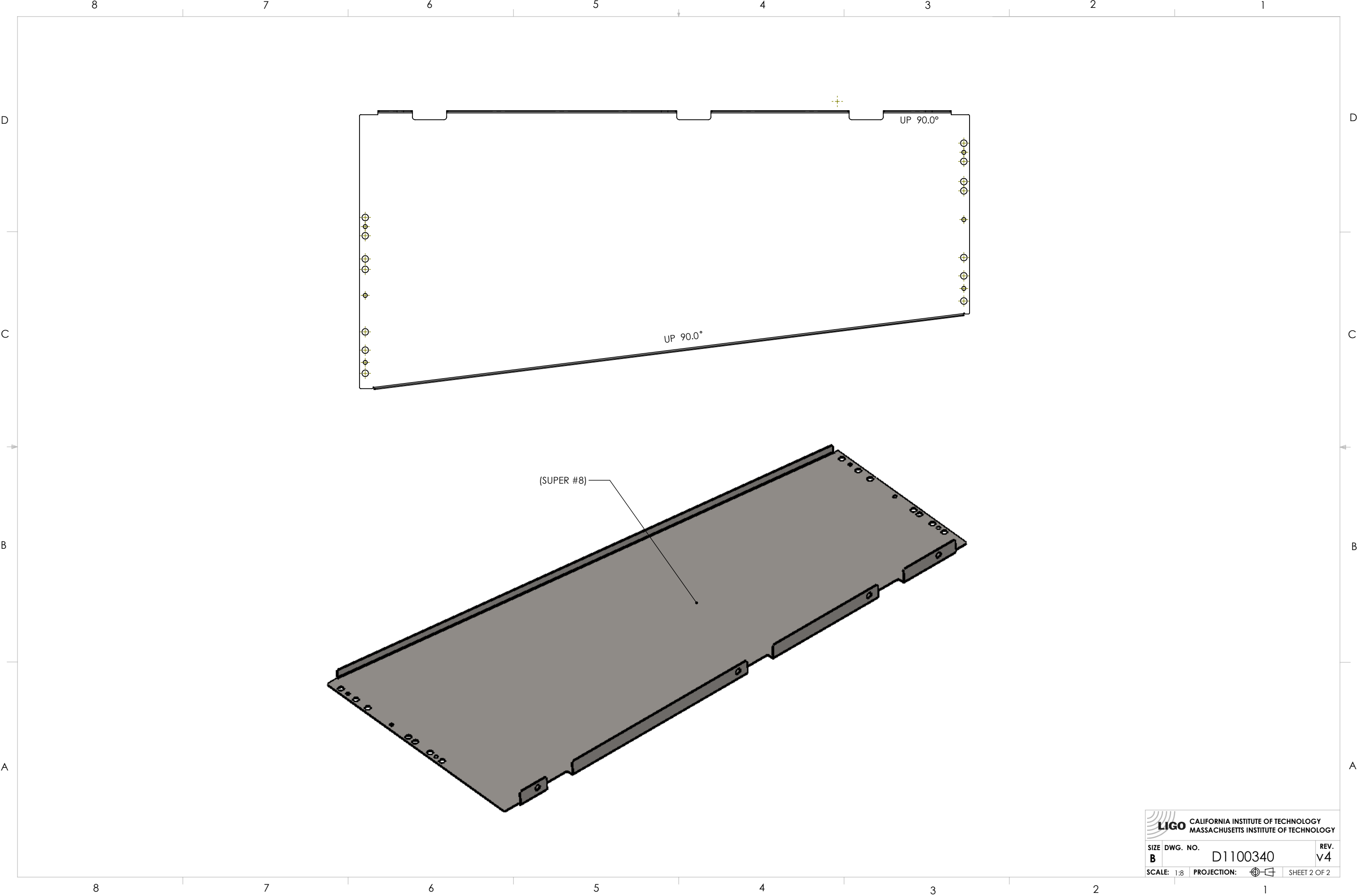
LIGO CALIFORNIA INSTITUTE OF TECHNOLOGY MASSACHUSETTS INSTITUTE OF TECHNOLOGY


SYSTEM ADVANCED LIGO SUB-SYSTEM AOS

NEXT ASSY D1100391

PART NAME		ACB RIGHT SIDE PANEL		SIZE	DWG. NO.	REV.
DESIGNER	N. Nguyen	24 Feb 2011		B	D1100340	v4
DRAFTER	N. KILPATRICK	08 MAR 2011				
CHECKER	L. AUSTIN					
APPROVAL	M. SMITH					
SCALE: 1:4		PROJECTION:		SHEET 1 OF 2		

D1100340_AdLIGO_AOS_SLC_ACB Right Side Panel, PART PDM REV: X-014, DRAWING PDM REV: X-024



 CALIFORNIA INSTITUTE OF TECHNOLOGY MASSACHUSETTS INSTITUTE OF TECHNOLOGY		
SIZE	DWG. NO.	REV.
B	D1100340	v4
SCALE: 1:8	PROJECTION:	SHEET 2 OF 2